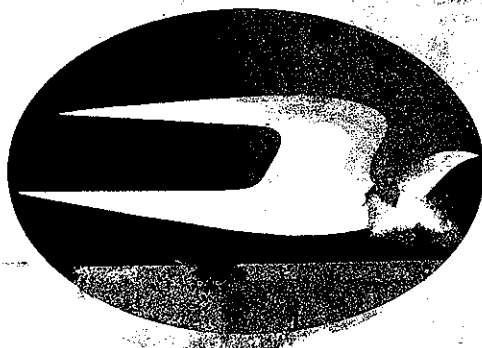


**1993  
WANDERLODGE  
SALES  
DATA BOOK**



---

**BLUE BIRD**

---

**1993 WANDERLODGE FEATURES**REFER TO STANDARD & OPTIONAL EQUIPMENT DATA  
SHEETS FOR COMPATIBILITY AND DESCRIPTION

AREA	CODE	DESCRIPTION	WLWB	WBSA	WBDA	OPT. NO.
BATHROOM	I	CERAMIC TILE, BATHROOM FLOOR.....	S	S	S	STD
	I	CORIAN, SHOWER WALLS.....	O	O	O	6027
	E	FANTASTIC FAN W/REMOTE SWITCH IN BATH ONLY.....	S	S	S	STD
	E	LIGHTING, BATHROOM.....	S	S	S	STD
	I	MEDICINE CABINET.....	S	S	S	STD
	I	NEW DIMENSION WALK THRU BATH.....	O	-	-	5989
	I	SHOWER IN LIEU OF BATH TUB IN WALK THRU BATH.....	O	-	-	5947
	I	SHOWER STALL.....	-	S	S	STD
	I	TOILET, MICROPHOR, AIR FLUSH.....	-	-	S	STD
	I	TOILET, MARINE TYPE, SEALAND.....	S	S	S	STD
	I	TOILET, MICROPHOR.....	O	O	-	5655
	I	TUB AND WALL, FIBERGLASS W/GLASS ENCLOSURE.....	S	-	-	STD
	I	VANITY, BATHROOM.....	S	S	S	STD
	I	WARDROBE CLOSET.....	S	S	S	STD
	I	WASHER/DRYER COMBO, 120V.....	O	-	O	5959
	I	BEDROOM ARRANGEMENT, STANDARD.....	S	-	-	STD
BEDROOM	I	BEDROOM, CONTROL PANEL.....	S	S	S	STD
	I	BEDROOM, CROSS ISLAND BED.....	O	S	S	5941
	I	BEDROOM, TWIN BED.....	O	-	-	5859
	I	DAVENPORT STORAGE.....	S	S	S	STD
	E	INDIRECT FLUORESCENT LIGHTING, BEDROOM.....	S	S	S	STD
	I	NIGHT TABLES AND TOPS, STAINED OAK WOOD.....	S	S	S	STD
	E	TELEVISION, 13" COLOR, LOCATED IN BEDROOM.....	S	S	S	STD
	B	WINDOWS, BEDROOM, DOUBLE SLIDING.....	S	S	S	STD
	C	AIR BRAKE SYSTEM.....	S	S	S	STD
	C	AIR DRYER, COMPRESSED AIR SYSTEM.....	S	S	S	STD
CHASSIS	C	AIR SCHRADER VALVE.....	S	S	S	STD
	C	AIR SUSPENSION.....	S	S	S	STD
	C	CRUISE CONTROL, INTEGRAL W/DDEC2.....	S	S	S	STD
	C	DIESEL FUEL, 100 GALLONS, FOR DELIVERY.....	S	S	S	STD
	C		S	S	S	STD

**1993 WANDERLODGE FEATURES**REFER TO STANDARD & OPTIONAL EQUIPMENT DATA  
SHEETS FOR COMPATIBILITY AND DESCRIPTION

AREA	CODE	DESCRIPTION	WLWB	WBSA	WBDA	OPT. NO.
	C	EMERGENCY WARNING TRIANGLE KIT .....	S	S	S	STD
	C	ENGINE STARTING, REMOTE .....	S	S	S	STD
	C	ENGINE, DETROIT DIESEL 8V92 THB DDEC 2 .....	S	S	S	STD
	C	FIRE ALARM, AUTOMATIC, ENGINE COMPARTMENT .....	S	S	S	STD
	C	FUEL FILTER AND WATER SEPARATOR, RACOR .....	S	S	S	STD
	C	FUEL TANK CAPACITY, 300 GALLONS .....	S	S	S	STD
	A	GENERATOR, 15KW, DIESEL POWERED .....	S	S	S	STD
	C	HEATER, ENGINE BLOCK .....	S	S	S	STD
	C	HITCH, TRAILER, RECEIVER TYPE .....	S	S	S	STD
	C	HOOKS, TOW .....	S	S	S	STD
	C	MUD FLAP, FULL WIDTH, REAR .....	O	O	O	5966
	C	MUD FLAPS FOR FRT AND REAR WHEELS .....	S	S	S	STD
	C	QUICK START AID, ETHER INJECTION .....	S	S	S	STD
	C	RETARDER, TRANSMISSION .....	S	S	S	STD
	C	SPARE PARTS KIT, AIR SUSPENSION .....	O	O	O	5715
	A	SPARE PARTS KIT, BODY - (WB) .....	O	O	O	6028
	A	SPARE PARTS KIT, ENGINE 8V92 .....	O	O	O	5631
	C	TIRES, 12.00 X 22.5 ON FORGED ALUMINUM WH .....	S	S	S	STD
	C	TRAILOR PLUG .....	S	S	S	STD
	C	WHEEL SAVER .....	S	S	S	STD
ELECTRICAL	E	A/T SWITCH (12VDC MASTER) .....	S	S	S	STD
	C	ALTERNATORS, DUAL 160 AMP W/DUAL READOUT .....	S	S	S	STD
	E	ANTENNA, TV, POWER .....	S	S	S	STD
	C	BATTERIES, GELL CELL, MAINTENANCE FREE, (8) .....	O	O	O	5967
	C	BATTERIES, CHASSIS, (3) 12 VOLT MAINTENANCE FREE .....	S	S	S	STD
	C	BATTERIES, COACH, (4) 12 VOLT .....	S	S	S	STD
	E	BATTERY CHARGERS, (2) 45 AMP .....	S	S	S	STD
	C	BATTERY HEATER (FOR ALL 12V BATTERIES, NOT GELL CELL) .....	O	O	O	5949
	E	BATTERY HEATER (FOR ALL CHASSIS BATTERIES) .....	O	O	O	5745
	I	BURGLAR ALARM SYSTEM .....	S	S	S	STD

**1993 WANDERLODGE FEATURES**REFER TO STANDARD & OPTIONAL EQUIPMENT DATA  
SHEETS FOR COMPATIBILITY AND DESCRIPTION

AREA	CODE	DESCRIPTION	WLWB	WBSA	WBDA	OPT. NO.
	E	CABLE CONNECTION AND CABLE FOR CABLE TV .....	S	S	S	STD
	E	CHIME, DOOR .....	S	S	S	STD
	E	ELECTRIC DOOR LOCKS FOR LUGGAGE COMPARTMENTS .....	O	O	O	5950
	E	ELECTRONIC MASTER SWITCH .....	S	S	S	STD
	B	EXTERIOR LIGHTING PACKAGE .....	O	O	O	5955
	E	FREEZER, WIRING ONLY .....	S	S	S	STD
	E	FREEZER IN OUTSIDE COMP., 50 LB .....	O	O	O	5826
	E	HEATER, WATER, WITH HEAT EXCHANGER .....	S	S	S	STD
	E	INVERTER, 2800 WATT .....	S	S	S	STD
	E	KOOL-O-MATIC FAN .....	S	S	S	STD
	E	LOAD CENTER .....	S	S	S	STD
	E	MONITORS, POWER LINE, 120 VAC .....	S	S	S	STD
	E	OUTLETS, LAND LINE PHONE .....	S	S	S	STD
	E	POWER CORDS .....	S	S	S	STD
	E	PREMIUM SOUND SYSTEM .....	O	O	O	5850
	E	SPLIT BATTERY POWER SYSTEM .....	S	S	S	STD
	E	SPOTLIGHT .....	S	S	S	STD
	E	STEREO SYSTEM, BEDROOM .....	S	S	S	STD
	E	WIRING, CELLULAR, WITH ANTENNA .....	S	S	S	STD
	E	AIR COMPRESSOR, AUXILIARY, 120 VAC .....	O	O	O	5812
	B	AIR OUTLET, AUXILIARY .....	S	S	S	STD
	B	AWNING, INDIVIDUAL, BEDROOM, CURB SIDE .....	S	S	S	STD
	B	AWNING, PATIO, CURB SIDE .....	S	S	S	STD
	B	AWNINGS, INDIVIDUAL, ROAD SIDE .....	S	S	S	STD
	B	BUMPERS, HIGH STRENGTH ALUMINUM W/ABS COVERS .....	S	S	S	STD
	B	COVER, PROTECTION, FRONT OF COACH .....	O	O	O	6035
	B	FENDERS, FIBERGLASS, PAINTED .....	S	S	S	STD
	A	GRILL, LPG, PORTABLE .....	S	S	S	STD
	A	HANDLE, ASSIST, ENTRANCE DOOR .....	S	S	S	STD
	C	HITCH, TRAILER, BALL, 10,000 LB. ....	O	O	O	6032

EXTERIOR

**1993 WANDERLODGE FEATURES**REFER TO STANDARD & OPTIONAL EQUIPMENT DATA  
SHEETS FOR COMPATIBILITY AND DESCRIPTION

Release Date ...5-28-92

AREA	CODE	DESCRIPTION	WLWB	WBSA	WBDA	OPT. NO.
A		HORNS, AIR .....	S			STD
B		KEYLESS ENTRY SYSTEM .....	S		S	STD
E		LIGHT, PORCH, CURB SIDE .....	S		S	STD
E		LIGHTS, FOG/DRIVING .....	S		S	STD
E		LIGHTS, LANDING, ROAD AND CURB SIDE .....	S		S	STD
E		LIGHTS, REAR PARKING .....	S		S	STD
B		LUGGAGE COMPARTMENTS.....	S		S	STD
P		LUGGAGE RACK AND ACCESS LADDER .....	O		O	5917
A		MIRRORS, REARVIEW (DUAL REMOTE CONTROLLED & HEATED) .....	S		S	STD
B		MIRRORS, REARVIEW, BRIGHT POLISHED .....	O		O	5980
E		OUTLET, 120 VAC, EXTERIOR .....	S		S	STD
E		OUTLET, 12VDC, EXTERIOR .....	S		S	STD
P		PAINT DESIGN, VISION I .....	O		O	6021
P		PAINT DESIGN, VISION II .....	O		O	6022
P		PAINT DESIGN, VISION III .....	O		O	6023
P		PAINT DESIGN, VISION IV .....	O		O	6024
P		PAINT DESIGN, VISION V .....	O		O	6025
P		PAINT DESIGN, VISION, STANDARD .....	S		S	STD
B		PAINT DESIGN, MACH 1 .....	O		O	5905
P		PAINT DESIGN, MACH 2 .....	O		O	5889
P		PAINT DESIGN, MACH 3 .....	O		O	5906
P		PAINT DESIGN, MACH 4 .....	O		O	5974
P		PAINT DESIGN, MACH 5 .....	O		O	5975
A		SEWER HOSE .....	S		S	STD
B		STEP, ENTRANCE DOOR, AIR OPERATED .....	S		S	STD
A		TOOL BOX .....	S		S	STD
A		WATER FAUCET, EXTERIOR .....	S		S	STD
A		WATER HOOK UP, COMMERCIAL .....	S		S	STD
A		WATER HOSE, 25 FT. ....	S		S	STD
A		WINDSHIELD WIPERS .....	S		S	STD

**1993 WANDERLODGE FEATURES**REFER TO STANDARD & OPTIONAL EQUIPMENT DATA  
SHEETS FOR COMPATIBILITY AND DESCRIPTION

AREA	CODE	DESCRIPTION	WLWB	WBSA	WBDA	OPT. NO.
GEN. INTERIOR	A	ZIP DEE PACKAGE .....	O	O	O	5679
	I	CARPET .....	S	S	S	STD
	A	CHROME OPTION .....	O	O	O	5990
	A	CUSTOMER SUPPLIED MATERIAL .....	O	O	O	5961
	I	DECOR, INTERIOR, BAHAMA SEA .....	O	O	O	5992
	I	DECOR, INTERIOR, MIDNIGHT SIZZLE .....	O	O	O	5994
	I	DECOR, INTERIOR, PAINTED DESERT-A .....	O	O	O	5995
	I	DECOR, INTERIOR, PAINTED DESERT-B .....	O	O	O	5996
	I	DECOR, INTERIOR, PYRAMID ESSENCE-A .....	O	O	O	5997
	I	DECOR, INTERIOR, PYRAMID ESSENCE-B .....	O	O	O	5998
	I	DECOR, INTERIOR, SOPHISTICATION .....	O	O	O	6000
	I	DECOR, INTERIOR, ZODIAC MIST .....	O	O	O	6001
	E	DRAPES, ELECTRIC, BEDROOM AND LIVING ROOM .....	S	S	S	STD
	I	FIRE EXTINGUISHERS (2) 2.5 LB .....	S	S	S	STD
	I	HEADLINER, ROLLED AND PLEATED .....	S	S	S	STD
	I	INTERIOR PACKAGE, FORMICA .....	O	O	O	5912
	I	INTERIOR PACKAGE, MAHOGANY .....	O	O	O	5977
	I	INTERIOR PACKAGE, OAK .....	S	S	S	STD
	I	INTERIOR PACKAGE, WALNUT .....	O	O	O	5968
	I	INTERIOR PROTECTION PACKAGE .....	O	O	O	5828
	I	LEATHER PACKAGE .....	O	O	O	5852
	A	LPG LEAK DETECTOR SYSTEM .....	S	S	S	STD
	B	SCREENS, WINDOW .....	S	S	S	STD
	A	SKYLIGHT W/SLDG COVERS .....	O	O	O	5851
	I	SMOKE DETECTOR .....	S	S	S	STD
	I	VACUUM CLEANER, ROLL-ABOUT .....	S	S	S	STD
	I	WINDOW TRIM .....	S	S	S	STD
	B	WINDOWS .....	S	S	S	STD
HEAT/AC	B	AIR CONDITIONER, AUTOMOTIVE, 18,000 BTU .....	S	S	S	STD
	B	AIR CONDITIONER, CONDENSATE DRAIN .....	S	S	S	STD

**1993 WANDERLODGE FEATURES**REFER TO STANDARD & OPTIONAL EQUIPMENT DATA  
SHEETS FOR COMPATIBILITY AND DESCRIPTION

AREA	CODE	DESCRIPTION	WLWB	WBSA	WBDA	OPT. NO.
INTERIOR	B	BAY HEAT, LPG HYDRONIC .....	○	○	○	5965
	I	DUCTED ROOF AIR CONDITIONING, W/REMOTE THERMOSTAT .....	S	S	S	STD
	B	ELECTRIC IMMERSION HEAT FOR LPG HYDRONIC .....	○	○	○	5976
	I	FREEZE PROTECTION .....	S	S	S	STD
	E	HEAT, ELECTRIC .....	S	S	S	STD
	B	HEAT, LPG HYDRONIC, W/HEAT EXCHANGERS .....	S	S	S	STD
	I	HEATER, CHASSIS, DASH AREA .....	S	S	S	STD
	I	VENTS, FRESH AIR .....	S	S	S	STD
	I	VISORS, SUN .....	S	S	S	STD
	I	WINDSHIELD BLIND .....	S	S	S	STD
	I	BLINDS, VENETIAN KITCHEN .....	S	S	S	STD
	I	COOKTOP, GAS, TWO BURNER .....	S	S	S	STD
KIT/DINETTE	I	COUNTERTOP, CORIAN .....	S	S	S	STD
	I	CUTLERY TRAY IN BASE CABINET .....	S	S	S	STD
	I	DINETTE PACKAGE, L SHAPE .....	○	-	-	5916
	I	DINETTE TABLE AND CHAIRS .....	○	○	○	5979
	I	DINETTE, FOUR PLACE, CORIAN TOP .....	S	-	-	STD
	I	DINETTE, THREE SEAT, CORIAN .....	-	S	S	STD
	I	DISH TOWEL RACK IN BASE CABINET .....	S	S	S	STD
	I	FLOOR PARQUET, WHITE OAK .....	S	S	S	STD
	I	FOOD CENTER (120V VARIABLE SPEED W/BLENDER) .....	S	S	S	STD
	E	GALLEY PANEL SYSTEMS MONITOR .....	S	S	S	STD
	E	GARBAGE DISPOSAL .....	○	○	○	5773
	E	HEATER, WATER, INSTANT HOT .....	S	S	S	STD
	I	ICE MAKER .....	S	S	S	STD
	E	LIGHTING, FLUORESCENT, INDIRECT .....	S	S	S	STD
	I	MICROCONVENTION OVEN ABOVE COOKTOP .....	S	S	S	STD
	I	MIRRORS .....	S	S	S	STD
	I	PANTRY, PULL OUT .....	S	-	-	STD
	I	REFRIGERATOR/FREEZER .....	S	S	S	STD

**1993 WANDERLODGE FEATURES**REFER TO STANDARD & OPTIONAL EQUIPMENT DATA  
SHEETS FOR COMPATIBILITY AND DESCRIPTION

AREA	CODE	DESCRIPTION	WLWB	WBSA	WBDA	OPT. NO.
LIVING ROOM	I	SECURITY SAFE .....	S	S	S	STD
	I	SHADES, DAY/NIGHT, DINETTE .....	S	S	S	STD
	I	SINK, DROP IN ENAMEL .....	S	S	S	STD
	I	WASTEBASKET IN BASE CABINET .....	S	S	S	STD
	I	COMPANION CHAIR .....	S	S	S	STD
	I	DELETE LIVING ROOM OVERHEAD CABINETS .....	O	O	O	5913
	E	LIGHTS, BULLET .....	S	S	S	STD
	E	LIGHTS, FLUORESCENT .....	S	S	S	STD
	I	SOFA .....	S	S	S	STD
	I	TABLE, END .....	S	S	S	STD
MECH. SYSTEMS	I	TABLE, LIVING ROOM, WOOD .....	S	S	S	STD
	A	AIR ACCUMULATOR, WATER SYSTEM .....	S	S	S	STD
	C	BULK OIL FILL, DIRECT INJECTION .....	S	S	S	STD
	C	LEVELING JACKS, HYDRAULIC, AUTOMATIC .....	S	S	S	STD
	A	TANK, FRESH WATER, 137 GALLON .....	S	S	S	STD
	A	TANK, LPG .....	S	S	S	STD
	I	WATER PUMP, DUAL .....	S	S	S	STD
	E	ALTIMETER IN LEFT OVERHEAD DASH .....	O	O	O	6033
	I	CB RADIO .....	S	S	S	STD
	I	CCTV SYSTEM, REARVIEW, SOLID STATE CAMERA, MONITOR IN DASH .....	S	S	S	STD
PLT/COPLT	I	COVER, STEPWELL, AIR POWERED SLIDING .....	S	S	S	STD
	E	ELECTRONIC COMPASS/THERMOMETER .....	O	O	O	6034
	I	FOOTRESTS .....	S	S	S	STD
	I	HOOD TABLE .....	S	S	S	STD
	E	LIGHTING, VALANCE .....	S	S	S	STD
	I	LOCK, ENTRANCE DOOR, POWER .....	S	S	S	STD
	E	MUSICAL HORN CONTROLS, REMOTE .....	O	O	O	5960
	I	MUSICAL HORN .....	S	S	S	STD
	I	RADAR DETECTOR .....	S	S	S	STD
	E	SAFELINE ALARM .....	S	S	S	STD

**1993 WANDERLODGE FEATURES**REFER TO STANDARD & OPTIONAL EQUIPMENT DATA  
SHEETS FOR COMPATIBILITY AND DESCRIPTION

AREA	CODE	DESCRIPTION	WLWB	WBSA	WBDA	OPT. NO.
	I	SEAT BELTS, RETRACTABLE .....	S	S	S	STD
	I	SEAT, COPILOT, 33" BUDDY W/POWER FOOTREST .....	O	O	O	5951
	I	SEAT, PILOT/COPILOT W/LUMBAR SUPPORT .....	S	S	S	STD
	I	SHADES, DAY/NIGHT .....	S	S	S	STD
	I	STEERING WHEEL W/TILT & TELESCOPING COLUMN .....	S	S	S	STD
	E	STEREO, 12V TUNER/CASSETTE AND SPEAKERS .....	S	S	S	STD
	I	STORAGE COMPARTMENT, FRONT OVERHEAD .....	S	S	S	STD
	I	TELEVISION, COLOR, STEREO, 20" IN FRT. OVERHEAD DASH .....	S	S	S	STD
	E	TRAVEL PILOT .....	O	O	O	6036
	E	TRIP ODOMETER .....	S	S	S	STD
	E	VCR .....	S	S	S	STD
STATE DECAL	A	STATE CERTIFICATION, CALIFORNIA .....	O	O	O	5870
	A	STATE SUPPLIED OPERATING DECAL, FLORIDA .....	O	O	O	5893
	A	STATE SUPPLIED OPERATING DECAL, TENNESSEE .....	O	O	O	5888
WASTE SYSTEM	A	POWER DUMP VALVE SYSTEM FOR HOLDING TANK .....	S	S	S	STD
	B	TANKS, HOLDING, HEATED, ENCLOSED, (2) TANKS .....	S	S	S	STD

**1993 WANDERLODGE OPTIONAL EQUIPMENT (ALPHA LIST)**

OPTION NO.	CODE	DESCRIPTION	WLWB	WBSA	WBDA
5812	E	AIR COMPRESSOR, AUXILIARY, 120 VAC .....	O	O	O
6033	E	ALTIMETER IN LEFT OVERHEAD DASH .....	O	O	O
5967	C	BATTERIES, GELL CELL, MAINTENANCE FREE, (8) .....	O	O	O
5949	C	BATTERY HEATER (FOR ALL 12V BATTERIES, NOT GELL CELL) .....	O	O	O
5745	E	BATTERY HEATER (FOR ALL CHASSIS BATTERIES) .....	O	O	O
5965	B	BAY HEAT, LPG HYDRONIC .....	O	O	O
5941	I	BEDROOM, CROSS ISLAND BED .....	O	S	S
5859	I	BEDROOM, TWIN BED .....	O	-	-
5990	A	CHROME OPTION .....	O	O	O
6027	I	CORIAN, SHOWER WALLS .....	O	O	O
6035	B	COVER, PROTECTION, FRONT OF COACH .....	O	O	O
5961	A	CUSTOMER SUPPLIED MATERIAL .....	O	O	O
5992	I	DECOR, INTERIOR, BAHAMA SEA .....	O	O	O
5994	I	DECOR, INTERIOR, MIDNIGHT SIZZLE .....	O	O	O
5995	I	DECOR, INTERIOR, PAINTED DESERT-A .....	O	O	O
5996	I	DECOR, INTERIOR, PAINTED DESERT-B .....	O	O	O

**1993 WANDERLODGE OPTIONAL EQUIPMENT (ALPHA LIST)**

OPTION NO.	CODE	DESCRIPTION	WLWB	WBSA	WBDA
5997	I	DECOR, INTERIOR, PYRAMID ESSENCE-A .....	O	O	O
5998	I	DECOR, INTERIOR, PYRAMID ESSENCE-B .....	O	O	O
6000	I	DECOR, INTERIOR, SOPHISTICATION .....	O	O	O
6001	I	DECOR, INTERIOR, ZODIAC MIST .....	O	O	O
5913	I	DELETE LIVING ROOM OVERHEAD CABINETS .....	O	O	O
5916	I	DINETTE PACKAGE, L SHAPE .....	O	-	-
5979	I	DINETTE TABLE AND CHAIRS .....	O	O	O
5950	E	ELECTRIC DOOR LOCKS FOR LUGGAGE COMPARTMENTS .....	O	O	O
5976	B	ELECTRIC IMMERSION HEAT FOR LPG HYDRONIC .....	O	O	O
6034	E	ELECTRONIC COMPASS/THERMOMETER .....	O	O	O
5955	B	EXTERIOR LIGHTING PACKAGE .....	O	O	O
5826	E	FREEZER IN OUTSIDE COMP., 50 LB. ....	O	O	O
5773	E	GARBAGE DISPOSAL .....	O	O	O
6032	C	HITCH, TRAILER, BALL, 10,000 LB. ....	O	O	O
5912	I	INTERIOR PACKAGE, FORMICA .....	O	O	O
5977	I	INTERIOR PACKAGE, MAHOAGANY .....	O	O	O

**1993 WANDERLODGE OPTIONAL EQUIPMENT (ALPHA LIST)**

OPTION NO.	CODE	DESCRIPTION	WLWB	WBSA	WBDA
5968	I	INTERIOR PACKAGE, WALNUT .....	O	O	O
5828	I	INTERIOR PROTECTION PACKAGE .....	O	O	O
5852	I	LEATHER PACKAGE .....	O	O	O
5917	P	LUGGAGE RACK AND ACCESS LADDER .....	O	O	O
5980	B	MIRRORS, REARVIEW, BRIGHT POLISHED .....	O	O	O
5966	C	MUD FLAP, FULL WIDTH, REAR .....	O	O	O
5960	E	MUSICAL HORN CONTROLS, REMOTE .....	O	O	O
5989	I	NEW DIMENSION WALK THRU BATH .....	O	-	-
6021	P	PAINT DESIGN, VISION I .....	O	O	O
6022	P	PAINT DESIGN, VISION II .....	O	O	O
6023	P	PAINT DESIGN, VISION III .....	O	O	O
6024	P	PAINT DESIGN, VISION IV .....	O	O	O
6025	P	PAINT DESIGN, VISION V .....	O	O	O
5905	B	PAINT DESIGN, MACH 1 .....	O	O	O
5889	P	PAINT DESIGN, MACH 2 .....	O	O	O
5906	P	PAINT DESIGN, MACH 3 .....	O	O	O

**1993 WANDERLODGE OPTIONAL EQUIPMENT (ALPHA LIST)**

OPTION NO.	CODE	DESCRIPTION	WLWB	WBSA	WBDA
5974	P	PAINT DESIGN, MACH 4 .....	O	O	O
5975	P	PAINT DESIGN, MACH 5 .....	O	O	O
5850	E	PREMIUM SOUND SYSTEM .....	O	O	O
5951	I	SEAT, COPILOT, 33' BUDDY W/POWER FOOTREST .....	O	O	O
5947	I	SHOWER IN LIEU OF BATH TUB IN WALK THRU BATH .....	O	-	-
5851	A	SKYLIGHT W/SLDG COVERS .....	O	O	O
5715	C	SPARE PARTS KIT, AIR SUSPENSION .....	O	O	O
6028	A	SPARE PARTS KIT, BODY .....	O	O	O
5631	A	SPARE PARTS KIT, ENGINE 8V92 .....	O	O	O
5870	A	STATE CERTIFICATION, CALIFORNIA .....	O	O	O
5893	A	STATE SUPPLIED OPERATING DECAL, FLORIDA .....	O	O	O
5888	A	STATE SUPPLIED OPERATING DECAL, TENNESSEE .....	O	O	O
5655	I	TOILET, MICROPHOR .....	O	O	-
6036	E	TRAVEL PILOT .....	O	O	O
5959	I	WASHER/DRYER COMBO, 120V .....	O	-	O
5679	A	ZIP DEE PACKAGE .....	O	O	O

**1993 WANDERLODGE OPTIONAL EQUIPMENT (NUMERICAL LIST)**

OPTION NO.	CODE	DESCRIPTION	WLWB	WBSA	WBDA
5631	A	SPARE PARTS KIT, ENGINE 8V92 .....	O	O	O
5655	I	TOILET, MICROPHOR .....	O	O	-
5679	A	ZIP DEE PACKAGE .....	O	O	O
5715	C	SPARE PARTS KIT, AIR SUSPENSION .....	O	O	O
5745	E	BATTERY HEATER (FOR ALL CHASSIS BATTERIES .....	O	O	O
5773	E	GARBAGE DISPOSAL .....	O	O	O
5812	E	AIR COMPRESSOR, AUXILIARY, 120 VAC .....	O	O	O
5826	E	FREEZER IN OUTSIDE COMP., 50 LB. ....	O	O	O
5828	I	INTERIOR PROTECTION PACKAGE .....	O	O	O
5850	E	PREMIUM SOUND SYSTEM .....	O	O	O
5851	A	SKYLIGHT W/SLDG COVERS.....	O	O	O
5852	I	LEATHER PACKAGE .....	O	O	O
5859	I	BEDROOM, TWIN BED .....	O	-	-
5870	A	STATE CERTIFICATION, CALIFORNIA.....	O	O	O
5888	A	STATE SUPPLIED OPERATING DECAL, TENNESSEE .....	O	O	O
5889	P	PAINT DESIGN, MACH 2 .....	O	O	O

**1993 WANDERLODGE OPTIONAL EQUIPMENT (NUMERICAL LIST)**

OPTION NO.	CODE	DESCRIPTION	WLWB	WBSA	WBDA
5893	A	STATE SUPPLIED OPERATING DECAL, FLORIDA .....	O	O	O
5905	B	PAINT DESIGN, MACH 1 .....	O	O	O
5906	P	PAINT DESIGN, MACH 3 .....	O	O	O
5912	I	INTERIOR PACKAGE, FORMICA .....	O	O	O
5913	I	DELETE LIVING ROOM OVERHEAD CABINETS .....	O	O	O
5916	I	DINETTE PACKAGE, L SHAPE .....	O	-	-
5917	P	LUGGAGE RACK AND ACCESS LADDER .....	O	O	O
5941	I	BEDROOM, CROSS ISLAND BED .....	O	S	S
5947	I	SHOWER IN LIEU OF BATH TUB IN WALK THRU BATH .....	O	-	-
5949	C	BATTERY HEATER (FOR ALL 12V BATTERIES, NOT GELL CELL) .....	O	O	O
5950	E	ELECTRIC DOOR LOCKS FOR LUGGAGE COMPARTMENTS .....	O	O	O
5951	I	SEAT, COPILOT, 33" BUDDY W/POWER FOOTREST .....	O	O	O
5955	B	EXTERIOR LIGHTING PACKAGE .....	O	O	O
5959	I	WASHER/DRYER COMBO, 120V .....	O	-	O
5960	E	MUSICAL HORN CONTROLS, REMOTE .....	O	O	O
5961	A	CUSTOMER SUPPLIED MATERIAL .....	O	O	O

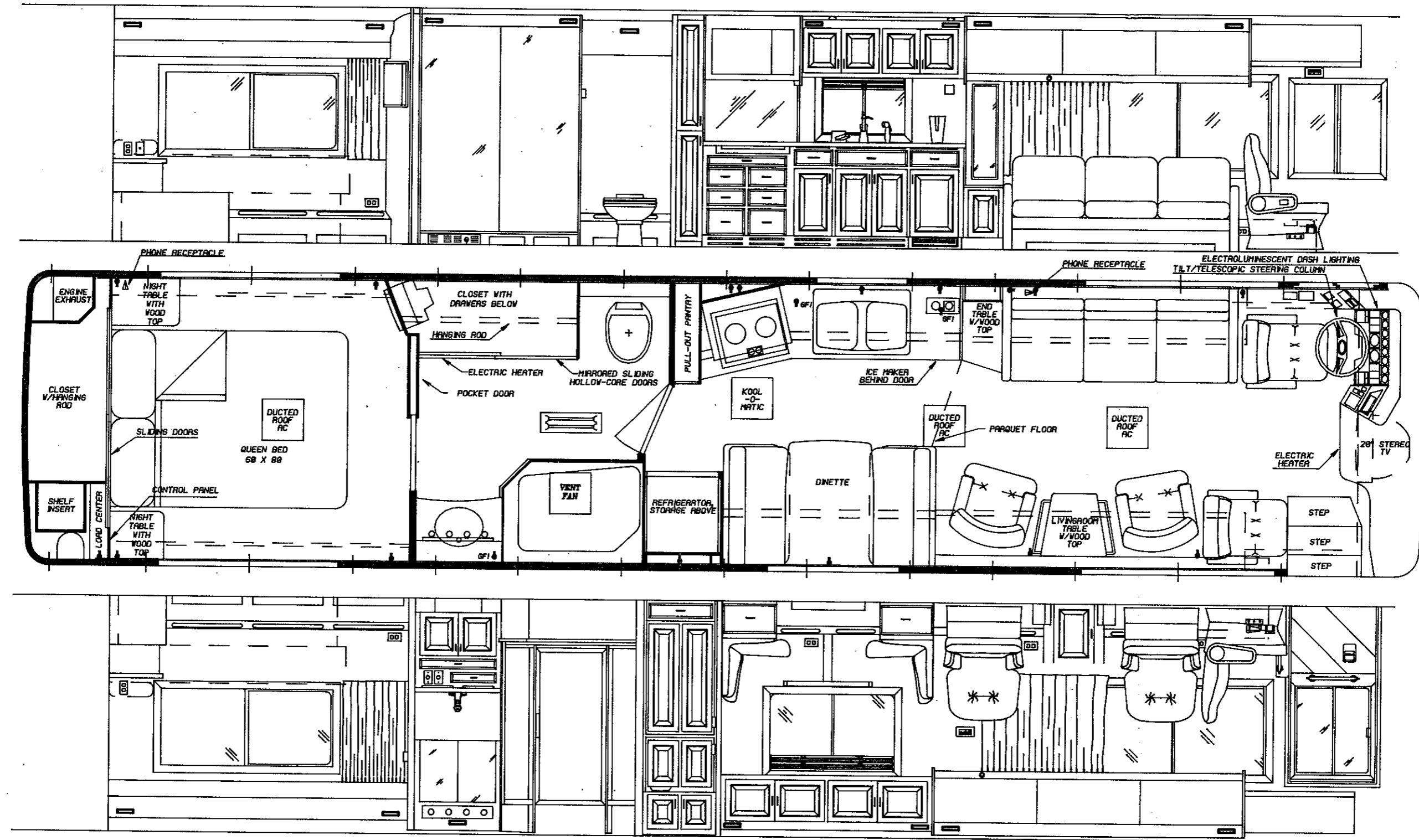
**1993 WANDERLODGE OPTIONAL EQUIPMENT (NUMERICAL LIST)**

OPTION NO.	CODE	DESCRIPTION	WLWB	WBSA	WBDA
5962	B	BAY HEAT, LPG HYDRONIC .....	O	O	O
5966	C	MUD FLAP, FULL WIDTH, REAR .....	O	O	O
5967	C	BATTERIES, GELL CELL, MAINTENANCE FREE, (8) .....	O	O	O
5968	I	INTERIOR PACKAGE, WALNUT .....	O	O	O
5974	P	PAINT DESIGN, MACH 4 .....	O	O	O
5975	P	PAINT DESIGN, MACH 5 .....	O	O	O
5976	B	ELECTRIC IMMERSION HEAT FOR LPG HYDRONIC .....	O	O	O
5977	I	INTERIOR PACKAGE, MAHOGANY .....	O	O	O
5979	I	DINETTE TABLE AND CHAIRS .....	O	O	O
5980	B	MIRRORS, REARVIEW, BRIGHT POLISHED .....	O	O	O
5989	I	NEW DIMENSION WALK THRU BATH .....	O	-	-
5990	A	CHROME OPTION .....	O	O	O
5992	I	DECOR, INTERIOR, BAHAMA SEA .....	O	O	O
5994	I	DECOR, INTERIOR, MIDNIGHT SIZZLE .....	O	O	O
5995	I	DECOR, INTERIOR, PAINTED DESERT-A .....	O	O	O
5996	I	DECOR, INTERIOR, PAINTED DESERT-B .....	O	O	O

**1993 WANDERLODGE OPTIONAL EQUIPMENT (NUMERICAL LIST)**

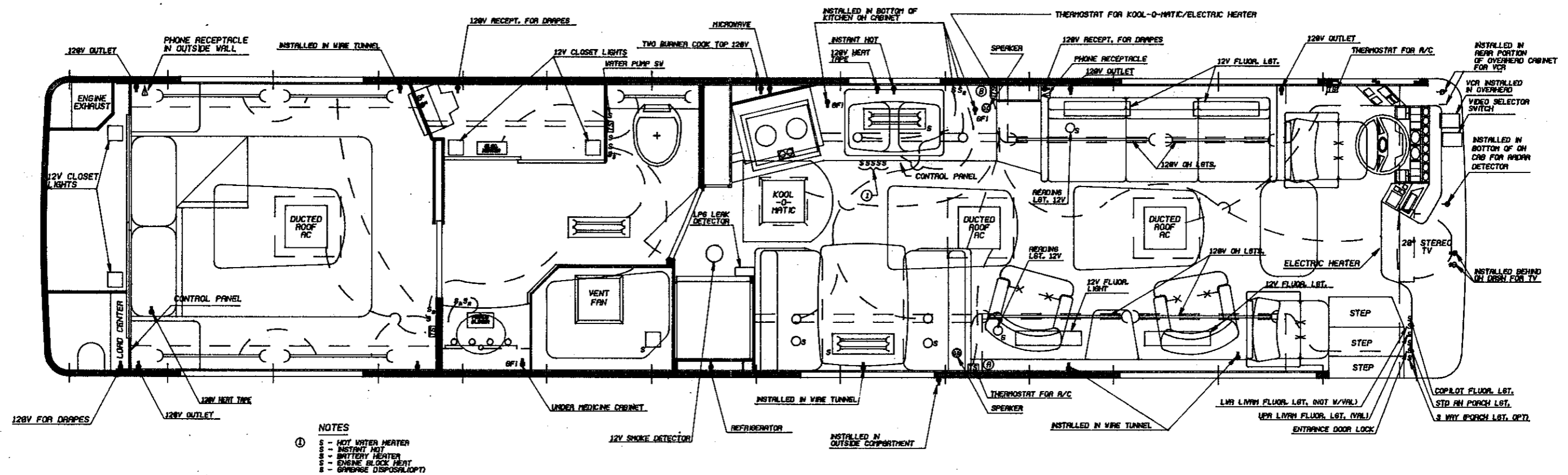
OPTION NO.	CODE	DESCRIPTION	WLWB	WBSA	WBDA
5997	I	DECOR, INTERIOR, PYRAMID ESSENCE-A .....	<input type="radio"/>	<input type="radio"/>	<input type="radio"/>
5998	I	DECOR, INTERIOR, PYRAMID ESSENCE-B .....	<input type="radio"/>	<input type="radio"/>	<input type="radio"/>
6000	I	DECOR, INTERIOR, SOPHISTICATION .....	<input type="radio"/>	<input type="radio"/>	<input type="radio"/>
6001	I	DECOR, INTERIOR, ZODIAC MIST .....	<input type="radio"/>	<input type="radio"/>	<input type="radio"/>
6021	P	PAINT DESIGN, VISION I .....	<input type="radio"/>	<input type="radio"/>	<input type="radio"/>
6022	P	PAINT DESIGN, VISION II .....	<input type="radio"/>	<input type="radio"/>	<input type="radio"/>
6023	P	PAINT DESIGN, VISION III .....	<input type="radio"/>	<input type="radio"/>	<input type="radio"/>
6024	P	PAINT DESIGN, VISION IV .....	<input type="radio"/>	<input type="radio"/>	<input type="radio"/>
6025	P	PAINT DESIGN, VISION V .....	<input type="radio"/>	<input type="radio"/>	<input type="radio"/>
6027	I	CORIAN, SHOWER WALLS .....	<input type="radio"/>	<input type="radio"/>	<input type="radio"/>
6028	A	SPARE PARTS KIT, BODY .....	<input type="radio"/>	<input type="radio"/>	<input type="radio"/>
6032	C	HITCH, TRAILER, BALL, 10,000 LB. ....	<input type="radio"/>	<input type="radio"/>	<input type="radio"/>
6033	E	ALTIMETER IN LEFT OVERHEAD DASH .....	<input type="radio"/>	<input type="radio"/>	<input type="radio"/>
6034	E	ELECTRONIC COMPASS/THERMOMETER .....	<input type="radio"/>	<input type="radio"/>	<input type="radio"/>
6035	B	COVER, PROTECTION, FRONT OF COACH .....	<input type="radio"/>	<input type="radio"/>	<input type="radio"/>
6036	E	TRAVEL PILOT .....	<input type="radio"/>	<input type="radio"/>	<input type="radio"/>

SPECIFICATIONS AND/OR FEATURES SHOWN ARE SUBJECT TO CHANGE WITHOUT NOTICE



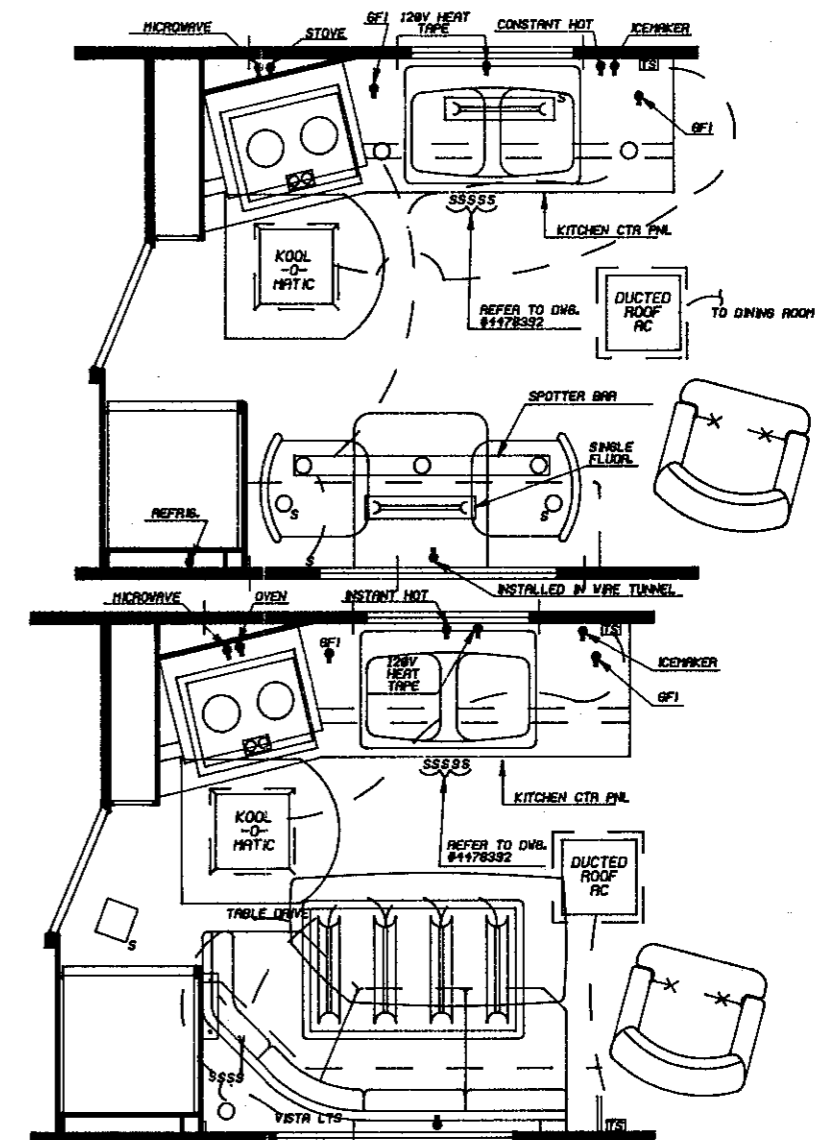
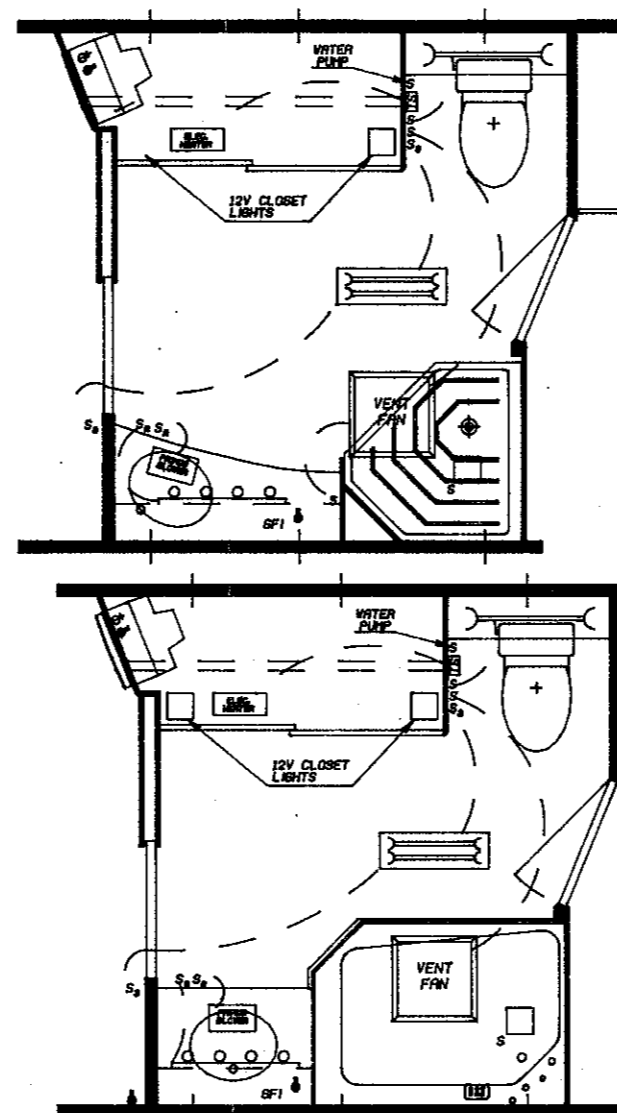
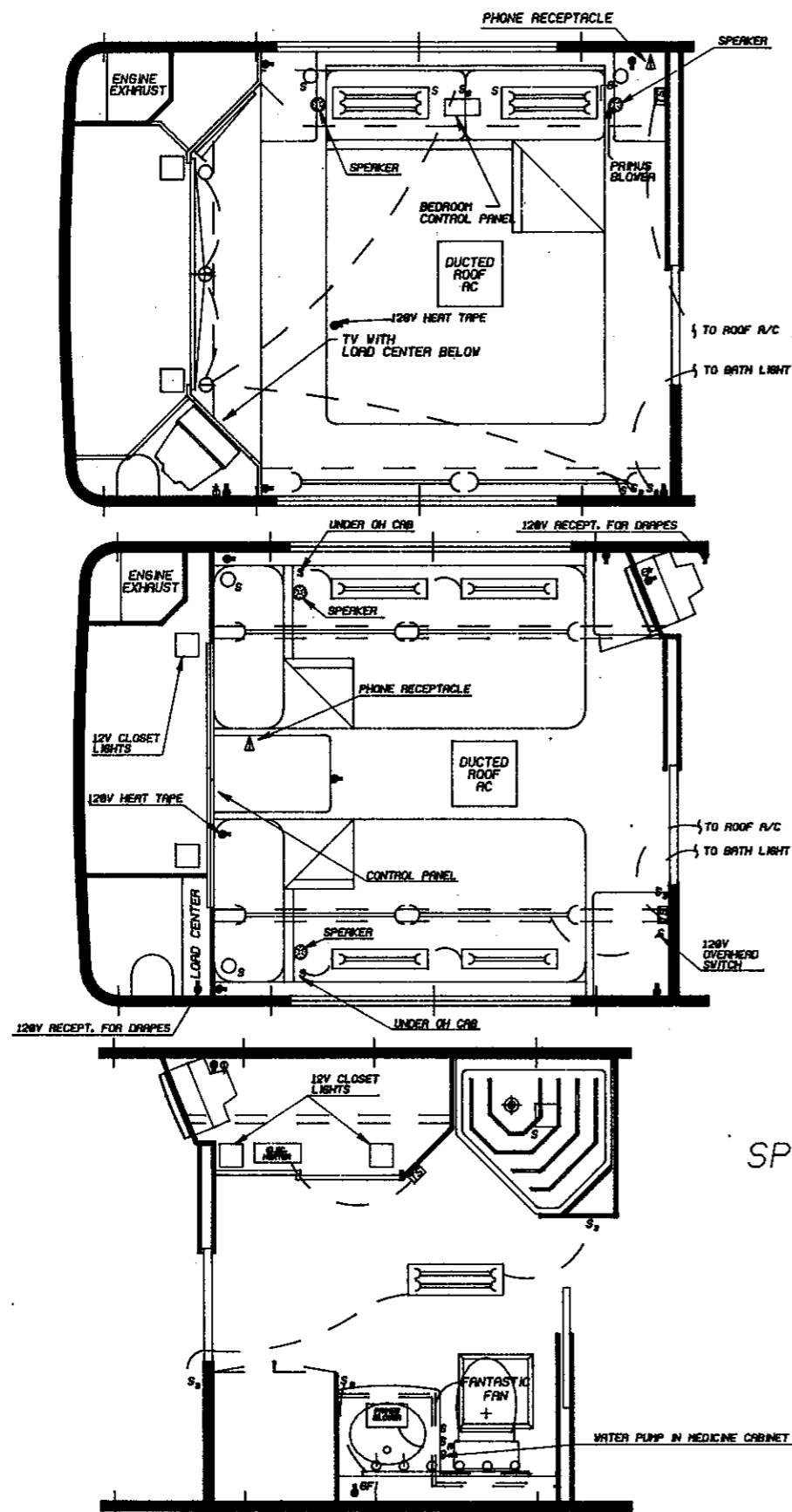
4446571 - FLOORPLAN, 3907 WLWB 1993, STANDARD  
1993 WLWB

SPECIFICATIONS AND/OR FEATURES SHOWN ARE SUBJECT TO CHANGE WITHOUT NOTICE



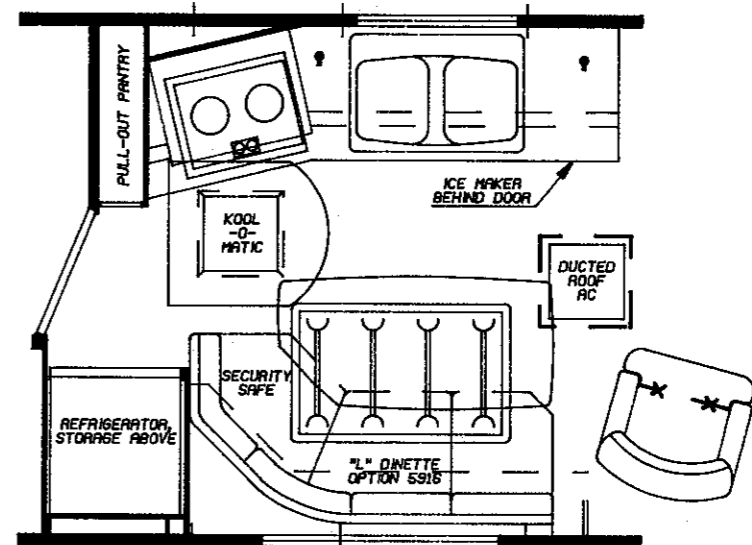
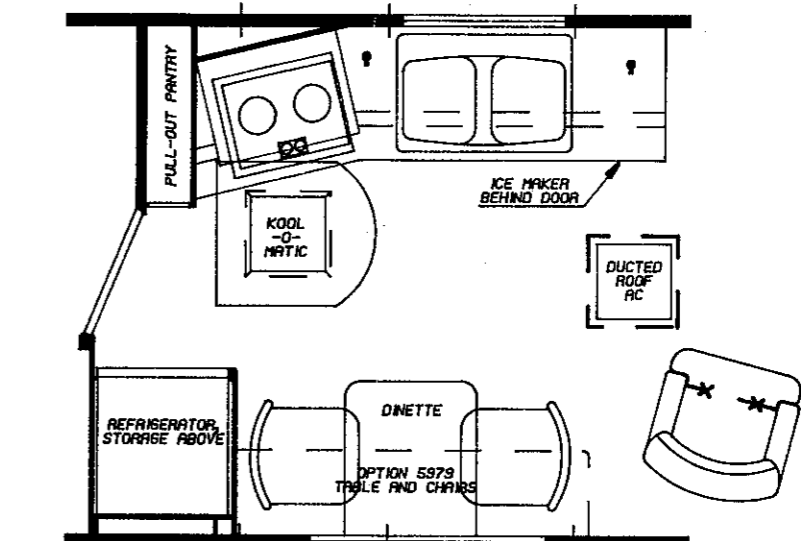
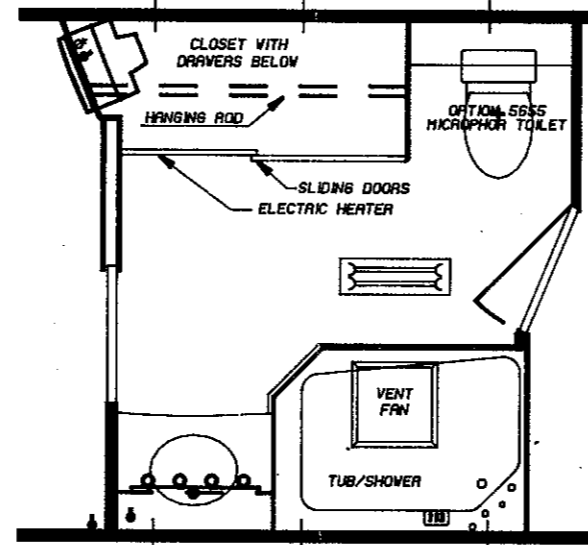
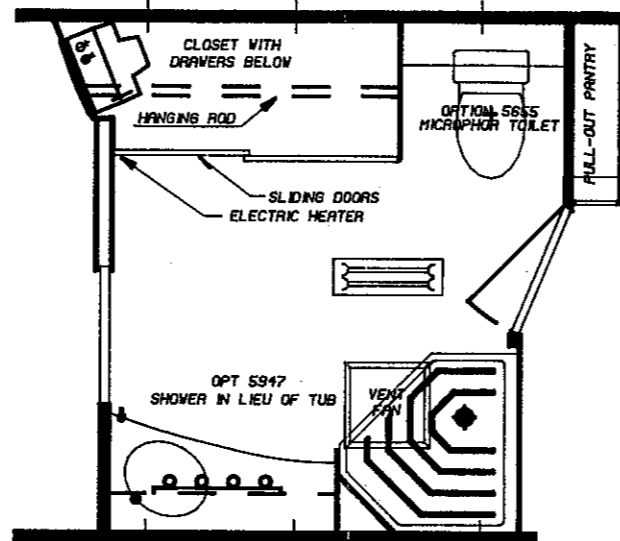
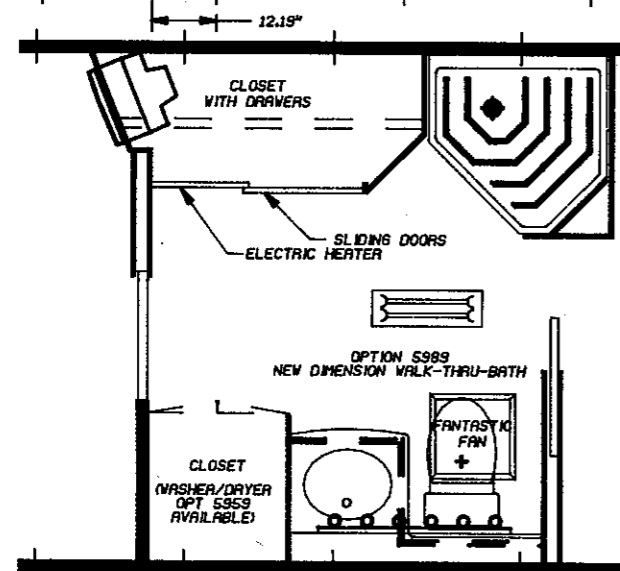
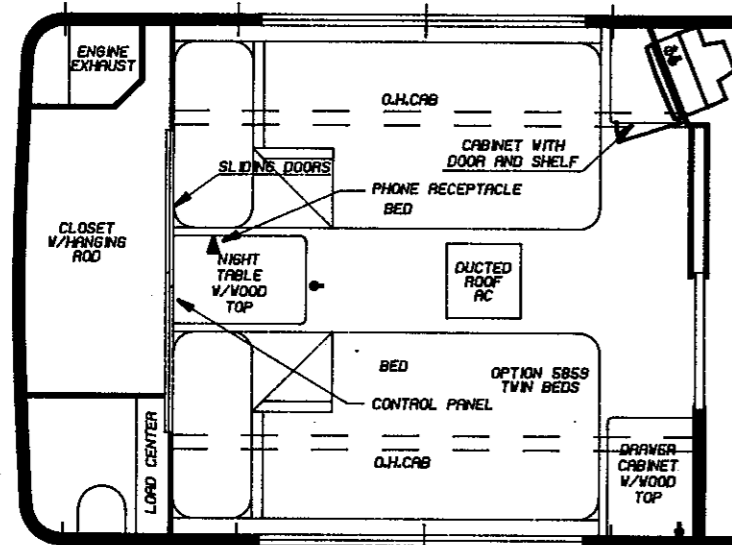
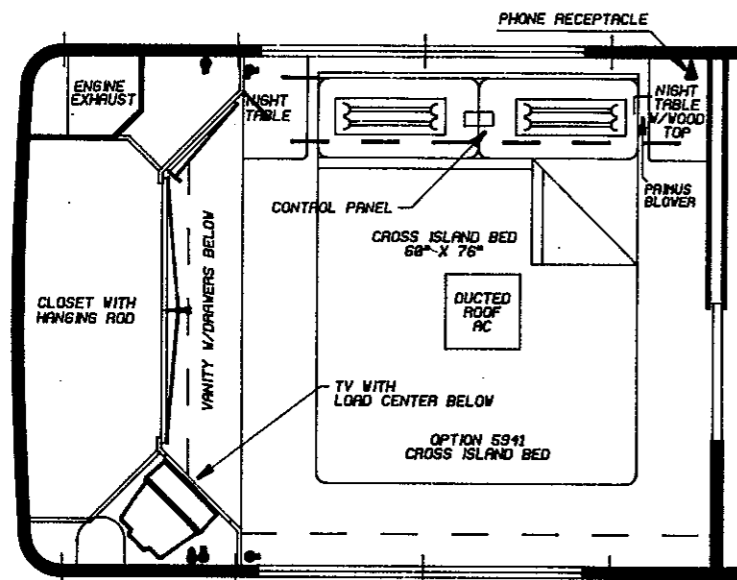
4446589 - FLOORPLAN, ELECTRICAL, 3907 WLWB 1993, STANDARD

1993 WL WB



SPECIFICATIONS AND/OR FEATURES SHOWN ARE SUBJECT TO CHANGE WITHOUT NOTICE

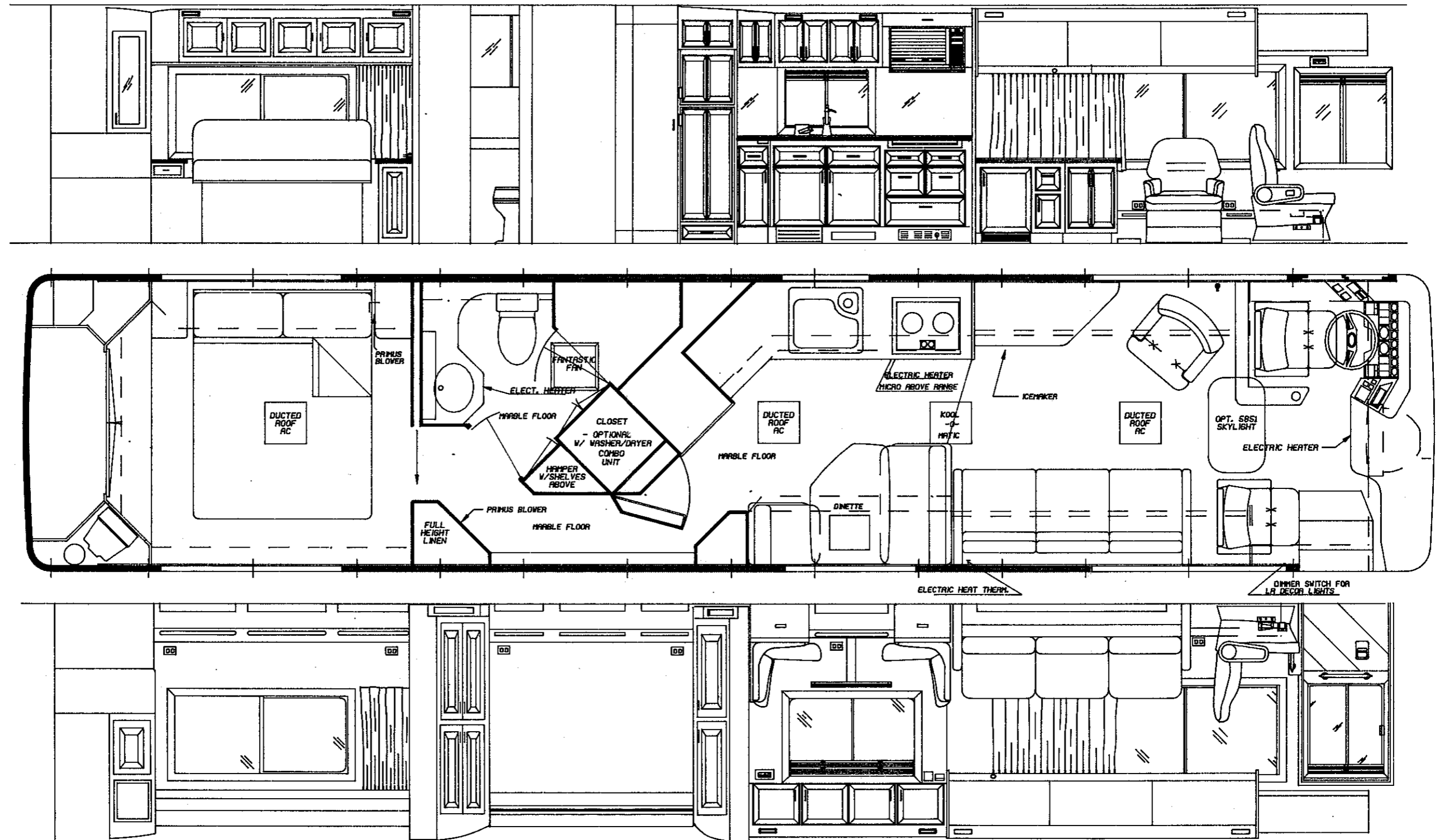
4446613 - FLOORPLAN, ELECTRICAL, 3907, WLWB 1993, STANDARD OPTIONS  
1993 WLWB



SPECIFICATIONS AND/OR FEATURES SHOWN ARE SUBJECT TO CHANGE WITHOUT NOTICE

4446605 - FLOORPLAN, 3907, WLWB, 1993, OPTIONAL EQUIPMENT  
1993 WLWB

SPECIFICATIONS AND/OR FEATURES SHOWN ARE SUBJECT TO CHANGE WITHOUT NOTICE

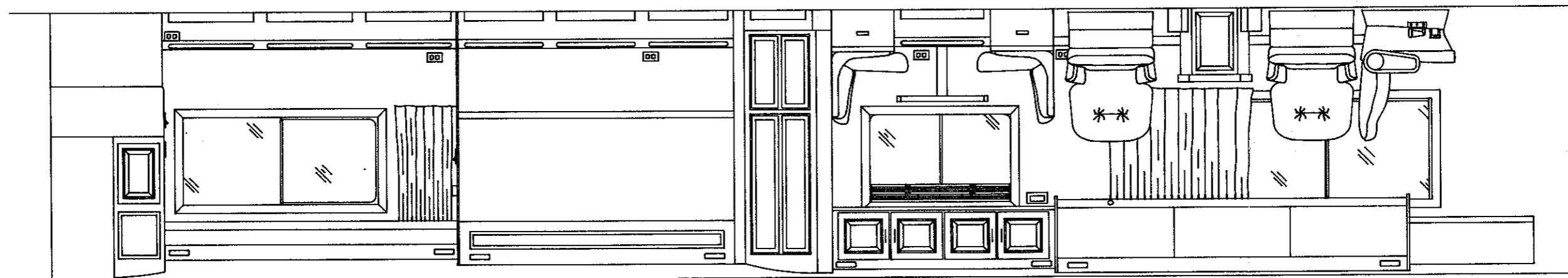
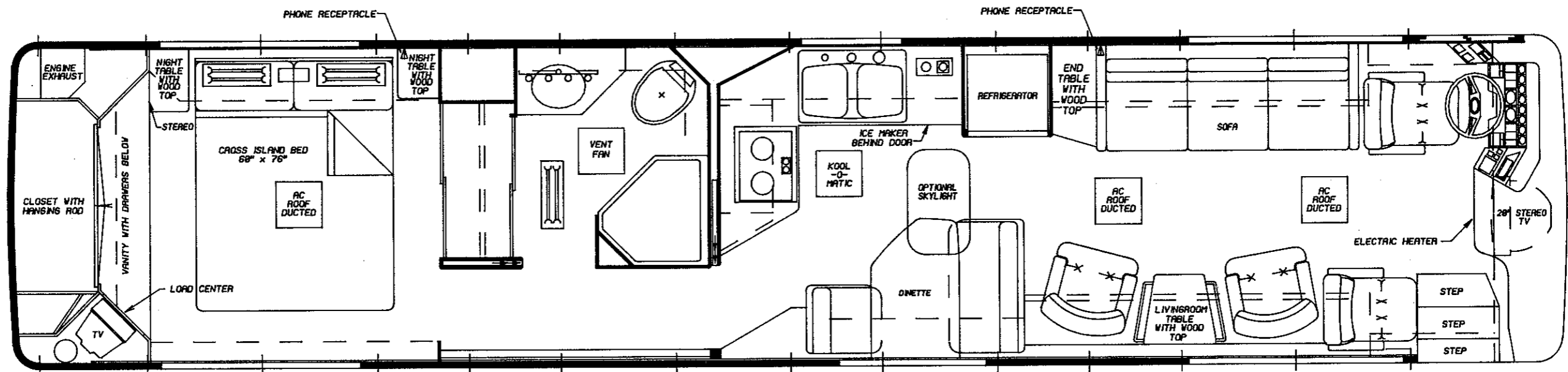
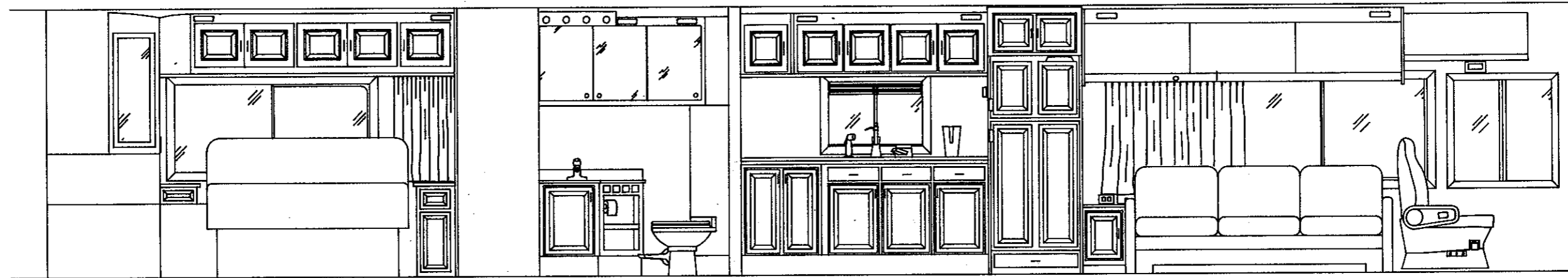


4446647 - FLOORPLAN, 3907 WBDA 1993, STANDARD  
93 WBDA

[illegible]

1993 WBDA

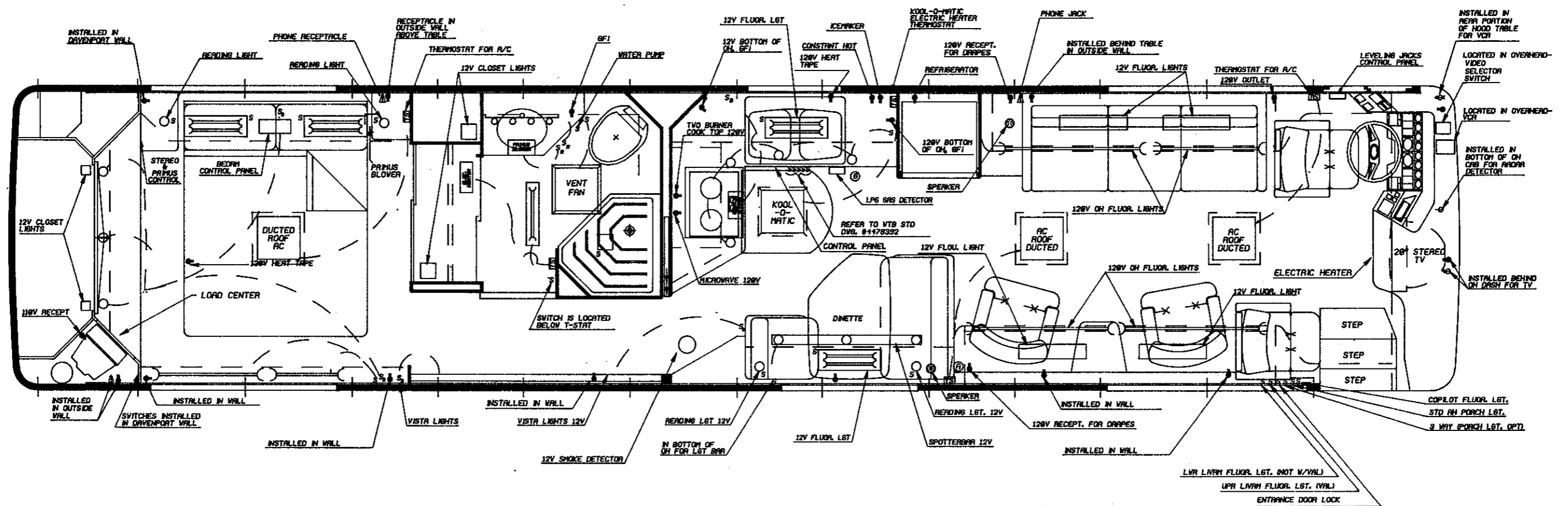
SPECIFICATIONS AND/OR FEATURES SHOWN ARE SUBJECT TO CHANGE WITHOUT NOTICE



4446621 - FLOORPLAN, 3907 WBSA 1993, STANDARD  
1993 WBSA

WBSA A

SPECIFICATIONS AND/OR FEATURES SHOWN ARE SUBJECT TO CHANGE WITHOUT NOTICE



4446639 - FLOORPLAN, ELECTRICAL, 3907 WBSA 1993, STANDARD

1993 WBSA

# 1993 WANDERLODGE WIDE BODY

## CHASSIS STANDARD EQUIPMENT

### ACCELERATOR (8V92T WLWB)

Electronic Accelerator with transmission computer link up for precise shifting.

### AIR COMPRESSOR

12.0 CFM capacity @ 1250 RPM, gear drive

### AIR RESERVE

Three tanks with 1760 cubic inch capacity each and one tank with 1240 cubic inch capacity

### ALTERNATOR

Dual, 12 volt, 160 amp with integral regulator.

### AXLES

14,400 # front; 23,000 # drive, single speed, 3.42 ratio; 10,000 # tag; all wheel bearings oil lubricated

### BATTERY

Three, 12 volt, group 31, 2775 cold cranking amps @ 0 degrees F.

### BRAKES, EMERGENCY

MGM 36" magnum piston type brake system with treadle valve control - separate instrument panel mounted valve provided for parking

### BRAKES, SERVICE

The coach is equipped with a dual service air brake system which includes two independent systems for the front and rear service brake. The front system includes a 30" brake chamber with 16-1/2 x 5 brake shoes and the rear system in-

cludes a 30" brake chamber with 16-1/2 x 7 brake shoes (16" tag service brake chambers on all models) for a total of 1196 square inches of lining area. A Bendix air dryer is included with the air brake system. Each brake chamber has an automatic slack adjuster to compensate for brake shoe wear.

### DRIVE LINE

Spicer 1810 series with protective guard around shaft

### ELECTRICAL SYSTEM

12 volt

### ENGINE

Detroit diesel engine, 8V92TA turbo charged DDEC II

### EXHAUST SYSTEM

16 gauge aluminized steel with heavy duty muffler (6 inch diameter - inlet & outlet)

### FUEL FILTER

Racor fuel filter water separator and preheater

### FRAME

Channel 10 - 1/8" high with 3-1/2" flanges made of 5/16" 50,000 psi steel, section modulus - 14.8 in.<sup>3</sup> Channels Doubled in high stress area - section modulus 40.9 in.<sup>3</sup>

### FUEL TANK

300 gallon capacity

### GROSS VEHICLE WEIGHT RATING

47,400 lbs. max.

### HORN

Electrical dual

**INSTRUMENTS AND GAUGES**

Speedometer, odometer, ammeter, fuel level, oil pressure, water temperature, two air pressure gauges and low pressure warning light and buzzer for dual brake system, tachometer, air pressure gauge for tag air suspension system, pyrometer and boost gauge, engine oil temperature, transmission oil temperature, and transmission retarder oil temperature warning light

**SHOCK ABSORBERS**

Direct acting, double action piston type; front, drive, and tag

**SUSPENSION**

Ridewell air suspension, 14,600 # front, 23,000 # drive and 10,000 # tag. Front and drive

systems utilize 4 air springs each, tag system utilizes 2 air springs

**STEERING GEAR**

Ross model TAS-85 with 23.3 to 1 ratio with integral power steering and tilt and telescoping steering wheel

**TIRES**

Tubeless 12R-22.5-H 16-ply rating Michelin steel cord radial with XZA thread, single front, dual drive and single tag turned to the outside

**WHEELS**

10 stud disc with 22.5 x 8.25 rims, polished aluminum, single front, dual drive, and single tag turned to the outside

**TRANSMISSION**

Allison automatic 5 speed electronic HT-755 with input retarder

**ENGINE SPECIFICATIONS****MAKE**

GM Detroit Diesel, 8V92TAC (DDEC II)

**TYPE**

2 Cycle diesel turbo charged, jacket water after cooled, electronic injection

**NUMBER OF CYLINDERS**

8-63-1/2 degree VEC

**BORE (Inches)**

4.84

**STROKE (Inches)**

5.00

**DISPLACEMENT**

92 Cubic Inches 736  
Per Cylinder

**COMPRESSION RATIO**

18 to 1

**TAXABLE HORSEPOWER**

75.0

**MAX. (Net) BHP @ RPM**

500 @ 2100

**MAX. (Net) TORQUE @ RPM**

1425 @ 1300

**MAX. GOV. RPM**

LOAD	2100
NO LOAD	2425

**GOVERNOR**

Type Electronic

**PISTON MATERIAL**

Arma-Steel Tin Plated

**CRANKCASE CAPACITY**

DRY	25
(Quarts) Refill	23

Wanderlodge Data Book**COOLING SYSTEM CAPACITY**

(Quarts)98 (Including Heaters)  
 Fan 38" Diameter - 8 blades,  
 hyd. drive

**WATER PUMP CA. @ ENG. RMP**

187 G.P.M. @ 2100

**ALTERNATOR**

Capacity 12 volt - 320 amp  
 (dual 160 amp al  
 ternators)  
 Polarity Negative ground

**OIL FILTER**

Type- Full flow,  
 disposable

**AIR CLEANER**

Type- Donaldson -  
 dry type

**EXHAUST SYSTEM**

Single 6" O.D. with one muffler

**TRANSMISSION - Type**

Allison Automatic  
 (HT-755) Electronic, ATEC  
 5 Forward - 1 Reverse

No. Speeds

**Gears****Ratios**

First

3.69

Second

2.00

Third

1.58

Fourth

1.25

Fifth

1.00

Reverse

9.65

Torque Converter

TC 496-1.83 Stall Ratio

Lubricant Capacity

31 qts. (includes filter & cooler)

Bellhouse size

SAE #1

Companion flange

1810 Spicer

**TURNING RADIUS****BODY MODEL****WHEELBASE****\*CURB RADIUS****\*\*WALL RADIUS**

3907 WLWB

247 IN.

33.7 FT.

38.5 FT.

\* Curb radius is the distance from the drive axle center line to the outside edge of the front tire.

\*\* Wall radius is the distance from the drive axle center to the outside edge of the front bumper.

**NOTE: Turning radii is with standard 12R22.5 tires**

**NUMERICAL ORDER**

OPTION NUMBER	OPTION DESCRIPTION	RESTRICTION	DISTRIBUTOR NET		
			WLWB	WBSA	WBDA

5631

**SPARE PARTS KIT. ENGINE. 8V92**

The spare parts kit, engine, 8v92 option includes additional belts, filters, hoses, racor element, transmission fluid, air compressor grease gun and water pump. These items are packed loose in the coach.

0 0 0 0

5655

**TOILET. MICROPHOR**

This option includes a vitreous china toilet, ultra-low water use and 12VDC electric flush.

0 0 0 0

5679

**ZIP DEE PACKAGE**

INCLUDES:

- (4) Chairs
- (2) Add a lounges
- Right hand living room/  
Dinette window awning

0 0 0 0

NOTE: RESTRICTIONS ARE NONE  
UNLESS OTHERWISE SPECIFIED.

**NUMERICAL ORDER**

OPTION NUMBER	OPTION DESCRIPTION	RESTRICTION	DISTRIBUTOR NET		
			WLWB	WBSA	WBDA

5715

**SPARE PARTS KIT, AIR SUSPENSION****INCLUDES:**

(1) 1263581 Front Air Spring  
 (1) 0961250 Rear Air Spring  
 (1) 0871376 Height Valve Control  
 (1) 0962183 Air Filter  
 (1) 0990671 Tag Air Spring

0 0 0 0

5745

**BATTERY HEATER (FOR CHASSIS BATTERIES)**

Battery heaters are installed on the 12 volt cranking batteries at rear of coach. Heaters are controlled by 120 VAC switch with indicator light. Switch location in kitchen base cabinet.

0 0 0 0

5773

**GARBAGE DISPOSAL**

This option includes garbage disposal located under kitchen sink bowl. Requires 120V supplied from shoreline or generator and is controlled by a switch located behind fold down drawer face in kitchen base cabinet.

0 0 0 0

NOTE: RESTRICTIONS ARE NONE  
UNLESS OTHERWISE SPECIFIED.

**NUMERICAL ORDER**

OPTION NUMBER	OPTION DESCRIPTION	RESTRICTION	DISTRIBUTOR NET		
			WLWB	WBSA	WBDA

5812

**AIR COMPRESSOR, AUXILIARY**

This option includes a 120 VAC compressor located in an outside compartment. 12V switch located on the lower dash panel operates the compressor via shoreline or generator power. The compressor provides a quick source of air for power tools or pressurizing the coach air system or tires without starting coach engine.

0 0 0 0

5826

**FREEZER IN OUTSIDE COMPARTMENT, 50 LB.**

A 50 lb capacity freezer mounted on a pull out tray is located in the curbside center storage compartment. The freezer operates on 120 VAC or 12 VDC. Power source has to be changed manually.

0 0 0 0

5828

**INTERIOR PROTECTION PACKAGE**

This option includes: Carpet with bound edges installed loose on the dash, bathroom carpet without bound edges packed loose in outside bay, and a removable vinyl carpet cover for living room. All items match coach interior decor.

0 0 0 0

NOTE: RESTRICTIONS ARE NONE  
UNLESS OTHERWISE SPECIFIED.

**NUMERICAL ORDER**

OPTION NUMBER	OPTION DESCRIPTION	RESTRICTION	DISTRIBUTOR NET		
			WLWB	WBSA	WBDA

5850

**PREMIUM SOUND SYSTEM**

Sound system features a 10 disc multiple CD player, graphic equalizer, and tuner cassette. Graphic equalizer features nine bands of equalization, three programmable memory presets, and three built-in memory presets. Tuner cassette features twenty-four channel preset memory, seek and manual tuning, Dolby B noise reduction, metal tape capability and loudness switch. Includes four full range coaxial speakers and 120 watts of power.

0 0 0 0

5851

**SKYLIGHT W/SLIDING COVER**

The skylight includes integral sliding cover. Sunroof contains sliding, black anodized aluminum screens.

0 0 0 0

5852

**LEATHER PACKAGE**

This option includes, dinette cushions and companion chairs covered in a leather to match the interior decor.

0 0 0 0

5859

**BEDROOM, TWIN BED**

Refer to floor plan for bedroom arrangement.

0 - -

NOTE: RESTRICTIONS ARE NONE  
UNLESS OTHERWISE SPECIFIED.

**NUMERICAL ORDER**

OPTION NUMBER	OPTION DESCRIPTION	RESTRICTION	DISTRIBUTOR NET		
			WLWB	WBSA	WBDA

5870

**STATE CERTIFICATION, CALIFORNIA**

This option includes in house inspection, filing of plans and compliance with state housing codes. An identification plate is installed immediately to the rear of the entrance door to satisfy state requirements and the installation of the state supplied operating decal. Option also includes special state construction and a listed L.P. gas leak detector. This option is required for all units sold to distributors in California.

0 0 0 0

5888

**STATE SUPPLIED OPERATING DECAL, TENNESSEE**

This option includes an identification decal installed immediately to the rear of the entrance door, below the door bell and handle. This option is required for units sold to distributors in Tennessee.

0 0 0 0

5889

**PAINT DESIGN, MACH II**

Five color paint design (includes base color). Colors can be customer selected.

0 0 0 0

5893

**STATE SUPPLIED OPERATING DECAL, FLORIDA**

This option includes an identification decal installed immediately to the rear of the entrance door, below the door bell and handle. This option required for units sold to distributors in Florida.

0 0 0 0

NOTE: RESTRICTIONS ARE NONE  
UNLESS OTHERWISE SPECIFIED.

**NUMERICAL ORDER**

OPTION NUMBER	OPTION DESCRIPTION	RESTRICTION	DISTRIBUTOR NET			
			WLWB	WBSA	WBDA	
5905	<u>PAINTE DESIGN. MACH I</u> Four color paint design (includes base color). Colors can be customer selected.		0	0	0	0
5906	<u>PAINTE DESIGN. MACH III</u> Four color paint design (includes base color). Colors can be customer selected.		0	0	0	0
5912	<u>INTERIOR PACKAGE FORMICA</u> European style laminate cabinets with matching wood trims.		0	0	0	0
5913	<u>DELETE LIVING ROOM OVERHEAD CABINETS</u> Fabric wrapped valances in living room in lieu of overhead cabinets.		0	0	0	0
5916	<u>DINETTE PACKAGE. L SHAPE</u> Three place dinette with a motorized retractable table for increased kitchen work space. Option includes: (1) Vista lights inside the ceiling fixture. Vista lights are wired to a separate switch.		0	-	-	-

NOTE: RESTRICTIONS ARE NONE  
UNLESS OTHERWISE SPECIFIED.

**NUMERICAL ORDER**

OPTION NUMBER	OPTION DESCRIPTION	RESTRICTION	DISTRIBUTOR NET		
			WLWB	WBSA	WBDA

5917

**LUGGAGE RACK AND ACCESS LADDER**

This option includes an aluminum roof luggage rack, with aerodynamic style ABS cover, access ladder and extruded aluminum roof tread. The luggage rack and ladder are painted the base color of the coach. The two piece ladder includes rubber tread to provide a non-slip surface and is mounted on the rear curbside of the coach.

0 0 0 0

5941

**BEDROOM, CROSS ISLAND BED**

60" x 76" double bed w/head of bed at left side of bedroom and aisle at foot, left, and right sides of bed; night table at each side of bed; vanity cabinet above engine deck with (5) drawers below and double mirrored raised panel oak doors into closet area; TV cabinet and load center in right hand corner and storage cabinet in left hand corner.

0 0 S S S

5947

**SHOWER IN LIEU OF TUB IN WALK THRU BATH**

This option provides a longer lavatory and medicine cabinet. Available only with standard walk thru bath.

0 - - -

NOT AVAILABLE  
WITH OPTION 5989  
NEW DIMENSION  
WALKTHRU BATH

NOTE: RESTRICTIONS ARE NONE  
UNLESS OTHERWISE SPECIFIED.

**NUMERICAL ORDER**

OPTION NUMBER	OPTION DESCRIPTION	RESTRICTION	DISTRIBUTOR NET		
			WLWB	WBSA	WBDA

5949

**BATTERY HEATER (FOR ALL 12 VOLT BATTERIES)**

Battery Heaters are installed on all 12 VDC storage batteries, to provide greater battery capacity in cold weather conditions. Heaters are controlled by 120 VAC switch with indicator light. Switch location in kitchen base cabinet.

0 0 0 0

NOT AVAILABLE  
WITH OPTION 5967

5950

**ELECTRIC DOOR LOCKS FOR LUGGAGE COMPARTMENTS**

Includes 12VDC actuation from the dash or keyless entry system. Key operation overrides each individual door. This option is included on all luggage compartment doors.

0 0 0 0

5951

**SEAT, CO-PILOT, 33" BUDDY W/POWER FOOTREST**

This optional seat is a wider seat with power footrest and lumbar support. It has the same six way electric seat adjustment as the standard co-pilot seat and is color coordinated to match pilot seat. Driver's seat will also be villa w/lumbar support.

0 0 0 0

NOTE: RESTRICTIONS ARE NONE  
UNLESS OTHERWISE SPECIFIED.

**NUMERICAL ORDER**

OPTION NUMBER	OPTION DESCRIPTION	RESTRICTION	DISTRIBUTOR NET		
			WLWB	WBSA	WBDA

5955

**EXTERIOR LIGHTING PACKAGE**

includes the following:

- (1) Additional porch light on the right hand side
- (2) Additional porch light on the left hand side over the utility box.

0

0

0

5959

**WASHER/DRYER COMBO. 120 V**

The washer/dryer combo is mounted on a slide out tray located in the full height closet with an access panel on the shelf above washer/dryer. Shut off valves for hot and cold water are located below the washer dryer. 120 VAC power is supplied by shoreline hook up or generator. A circuit breaker controls power to washer/dryer.

AVAILABLE ONLY  
WITH OPTION 5989  
NEW DIMENSION WALK  
THRU BATH .

0

0

0

5960

**MUSICAL HORN CONTROLS. REMOTE**

This option features a control panel installed in the co-pilot's kick panel to permit the musical horns to be operated by the co-pilot.

0

0

0

5961

**CUSTOMER SUPPLIED MATERIAL**

This option should be specified if the coach will be built using either customer or dealer supplied materials.

0

0

0

NOTE: RESTRICTIONS ARE NONE  
UNLESS OTHERWISE SPECIFIED.

**NUMERICAL ORDER**

OPTION NUMBER	OPTION DESCRIPTION	RESTRICTION	DISTRIBUTOR NET		
			WLWB	WBSA	WBDA

5965

**BAY HEAT, LPG HYDRONIC**

This option allows outside storage compartments (not holding tank) to be heated for freeze protection by the LPG hydronic heating system. It contains 2-10,000 BTU fan forced heat exchanges that are activated by a thermostatically controlled switch at approximately 40 degrees F.

0 0 0 0

5966

**MUD FLAP, FULL WIDTH, REAR**

Includes full width rubber mud flap with trim.

0 0 0 0

5967

**BATTERIES, GELL CELL****MAINTENANCE FREE, (8) EIGHT (WLWB)**

This option replaces the (4) four standard lead acid coach batteries with (8) eight gell cell maintenance free batteries. Option includes an additional roll out battery tray.

0 0 0 0

5968

**INTERIOR PACKAGE WALNUT**

This option replaces all oak wood components with walnut wood finished in natural color.

0 0 0 0

NOTE: RESTRICTIONS ARE NONE  
UNLESS OTHERWISE SPECIFIED.

**NUMERICAL ORDER**

OPTION NUMBER	OPTION DESCRIPTION	RESTRICTION	DISTRIBUTOR NET			
			WLWB	WBSA	WBDA	

5974

**PAINT DESIGN, MACH IV**

Four color paint design (includes base color). Colors can be customer selected.

0 0 0 0

5975

**PAINT DESIGN, MACH V**

Five color paint design (includes base color). Colors can be customer selected.

0 0 0 0

5976

**ELECTRIC IMMERSION HEAT, HYDRONIC SYSTEM**

This is an accessory to the LPG Hydronic heat system. It's primary use is to serve as a low requirement heat source. It is NOT intended to heat the coach in extreme cold conditions. In these conditions LPG must be the source of energy.

0 0 0 0

5977

**INTERIOR PACKAGE, MAHOGANY**

This option replaces all oak wood components with Mahogany wood finished in a 50/50 mix of red mahogany stain and 3812 thinner.

0 0 0 0

NOTE: RESTRICTIONS ARE NONE  
UNLESS OTHERWISE SPECIFIED.

**NUMERICAL ORDER**

OPTION NUMBER	OPTION DESCRIPTION	RESTRICTION	DISTRIBUTOR NET		
			WLWB	WBSA	WBDA

5979

**DINETTE TABLE AND CHAIRS**

CORIAN table with brass accent mounted with canter lever leg and 2 chairs. This option will be in lieu of the bench (booth) type dinette. Security safe is relocated.

0 0 0 0

5980

**MIRRORS, REAR VIEW, BRIGHT POLISHED**

Includes the right and left outside mirrors bright polished.

0 0 0 0

5989

**NEW DIMENSION WALK THRU BATH**

Refer to floor plan for bathroom arrangement.

0 - -

5990

**CHROME OPTION**

This option replaces all brass fixtures with chrome fixtures.

0 0 0 0

6021

**PAINT DESIGN, VISION I**

3 color paint scheme (including base color). Colors other than base color can be selected at no extra charge, or the color coordinated paint scheme can be selected.

0 0 0 0

NOTE: RESTRICTIONS ARE NONE  
UNLESS OTHERWISE SPECIFIED.

**NUMERICAL ORDER**

OPTION NUMBER	OPTION DESCRIPTION	RESTRICTION	DISTRIBUTOR NET		
			WLWB	WBSA	WBDA
6022	<b><u>PAINT DESIGN, VISION II</u></b> 5 color paint scheme (including base color). Colors can be customer selected.		0	0	0
6023	<b><u>PAINT DESIGN, VISION III</u></b> 5 color paint scheme (including base color). Colors can be customer selected.		0	0	0
6024	<b><u>PAINT DESIGN, VISION IV</u></b> 4 color paint scheme (including base color). Colors can be customer selected.		0	0	0
6025	<b><u>PAINT DESIGN, VISION V</u></b> 5 color paint scheme (including base color). Colors can be customer selected.		0	0	0
6027	<b><u>CORIAN SHOWER WALLS</u></b> Fiberglass pan w/non skid bottom and coordinated CORIAN walls.		0	0	0

NOTE: RESTRICTIONS ARE NONE  
UNLESS OTHERWISE SPECIFIED.

**NUMERICAL ORDER**

OPTION NUMBER	OPTION DESCRIPTION	RESTRICTION	DISTRIBUTOR NET		
			WLWB	WBSA	WBDA

6032

**HITCH, TRAILER BALL, 2 5/16" DIA.**

Trailer hitch ball will be 2.312" dia. with 1.25" shank which will provide a towing capacity of 10,000 lbs. and a 1,000 lbs. capacity tongue weight.

0 0 0 0

6033

**ALTIMETER**

Indicates the altitude of the coach. Altimeter is located in the front overhead dash in the center.

0 0 0 0

6034

**ELECTRONIC COMPASS/THERMOMETER**

Compass will be mounted in the RH dash. Compass will include a digital readout for compass and inside/outside thermometer.

0 0 0 0

6035

**COVER, PROTECTION FRONT OF COACH**

Includes a vinyl cover held on with snaps on front of coach from windshield down.

0 0 0 0

6036

**TRAVEL PILOT**

Computer aide map system of interstate highways. System consists of a CRT display, CD-ROM stereo maps of the U.S. interstate system and several major cities.

0 0 0 0

NOTE: RESTRICTIONS ARE NONE  
UNLESS OTHERWISE SPECIFIED.

## COVER PAGE

### OWNER DELIVERY PROCESS

The owner delivery process is a service offered to owners taking delivery at the factory. It's purpose is to train owners in the use of a Wanderlodge motor home by a factory trained professional.

### GENERAL STATEMENT ABOUT INTERIORS

Interiors will be stained oak wood which will consist of the following items.

Walls will be wood or wallpaper. Cabinets will be wood (with the exception of the living room over head cabinets which will be wrapped in vinyl). All table tops will be wood with the exception of the kitchen countertop and dinette top which are Corian or same type material.

### FIXTURES

Switches/receptacles are tapeeze-type.

Light fixtures and bath accessories will be brass.

### MIRRORS

All interior mirrors meet ANSI A119.2 and ANSI Z97.1 safety requirements.

## BATHROOM

### CERAMIC TILE, BATHROOM FLOOR

Ceramic tile is installed on the floor and around the exterior of the bath tub.

### FANTASTIC FAN

Remote switch, painted wood frame, sliding cover.

### LIGHTING (WLWB)

Opera light, 120 VAC (A four (4) bulb fixture installed over the medicine cabinet). Valance lighting (A 12 VDC fixture built into the valance over the toilet.)

### LIGHTING (WBSA)

Opera light, 120 VAC (A Three (3) bulb fixture installed over vanity. A 12V thinlite is mounted in bathroom ceiling.)

### LIGHTING (WBDA)

Two Opera lights, 120 VAC (Two Three (3) bulb fixtures installed over vanity. A 12V thinlight is mounted in bathroom ceiling.)

### MEDICINE CABINET (WLWB) WITH:

- Two (2) doors, w/safety backed mirror
- Two (2) adjustable shelves with anti-tip lips.
- Air conditioning outlet.
- One (1) 12 VDC bullet light
- One (1) 120 VAC GFI receptacle

### MEDICINE CABINET (WBSA & WBDA):

- Four doors w/safety backed mirrors
- Two adjustable shelves w/anti-tip lips
- 120 VAC GFI receptacle below
- Two A/C outlets

**MISCELLANEOUS :**

Toilet tissue holder  
One towel bar  
One robe hook  
Two towel rings

**SHOWER STALL (WBDA & WBSA) WITH:**

Personal shower wand with massage on adjustable bar  
Single handle control  
Dual Towel Bar  
\* Fiberglass pan w/non skid bottom and coordinated cultured marble walls (WBDA - cultured marble pan).  
Soap dish  
Travel latch on glass door  
Tub enclosure (safety glass)  
12 VDC light fixture in ceiling

\* NOTE: Gelcoat color coordinated to interior.

**TOILET, SEALAND (WLWB & WBSA)**

Color coordinated to interior  
Two (2) rolls of dissolvable toilet tissue are provided, along with toilet chemical.

**TOILET, MICROPHOR AIR FLUSH (WBDA)**

Color coordinated to interior. Compressor located in LH rear luggage compartment.  
Two (2) rolls of dissolvable toilet tissue are provided, along with toilet chemical.

**TUB/SHOWER UNIT (WLWB) WITH:**

Stationary shower head  
Personal shower wand with massage on adjustable bar  
Double handle control  
Towel Bar  
Shower diverter valve  
\* Fiberglass tub with non-skid bottom  
Molded soap dish  
Storage for bath amenities  
Travel latch on glass door  
\* Fiberglass tub surround  
Glass tub enclosure (clear safety glass)

\* NOTE: Gelcoat color coordinated to interior.

**VANITY (WBSA) WITH:**

Cultured marble top.  
Single lever control.  
One (1) raised panel door.  
Built in magazine rack

**VANITY (WBDA) WITH:**

Cultured marble top (L-shaped).  
Single handle control.  
One (1) raised panel door.

**VANITY (WLWB) WITH:**

Cultured marble top.  
Single handle control.  
One(1) drawer and two (2) doors.

**WARDROBE CLOSET (WBDA)**

Two (2) safety backed mirrored hinged doors  
Hanging Rod  
One (1) 12 VDC light fixture w/automatic switching  
Carpeted interior

**WARDROBE CLOSET (WLWB & WBSA)**

Two (2) mirrored sliding doors  
Four (4) storage drawers (WLWB only)  
Three (3) large storage drawers (WBSA only)  
Hanging rod  
Two (2) 12VDC light fixtures w/automatic switching  
Carpeted interior

## BEDROOM

### **BEDROOM ARRANGEMENT, STANDARD**

Innerspring Mattress-(WLWB 60 x 80), (WBDA & WBSA 60 x 76); two (2) foam pillows; quilted bedspread with reverse matching pillow sham; light valance, fabric covered to match interior decor.

### **BEDROOM CONTROL PANEL**

1. Generator Start/Stop Switch
2. Light switch to control the aisle lights.
3. Security switch controls entrance door electric dead bolt lock and landing lights for exterior lighting
4. Alarm clock
5. Electric drapes
6. Security system panic switch

### **INDIRECT FLUORESCENT LIGHTING, BEDROOM**

#### **WLWB**

Upper 120 VAC lights in side valances. The lights are controlled by a switch on the bedroom wall.

#### **WBSA & WBDA**

Upper 120 VAC lights in side valance (curb side). The lights are controlled by switch on bedroom wall. Road side overhead cabinet to have two (2) 12 VDC spotters and (2) 12 VDC fluorescent light.

### **DAVENPORT STORAGE BEHIND BED (WLWB)**

Full length hanging rod; cedar lining on back wall with a carpet floor and side walls, 12 VDC light fixtures in ceiling w/automatic switching; (2) clear sliding safety backed mirrored doors.

**DAVENPORT STORAGE (WBSA & WBDA)**

Vanity cabinet above engine deck includes:

- One (1) double depth drawer

- Four (4) standard depth drawers

- Two (2) safety backed mirrored doors w/raised panel oak frames in closet area

- Cedar lining on back wall of closet area

- Load center in lower right corner behind safety back mirrored door w/raised panel oak frame

- TV cabinet above load center

- Removeable shelf storage inside closet - RH side storage cabinet in left corner behind safety backed mirrored door w/raised panel oak frame

**NIGHT TABLES (WLWB)**

Stained oak wood w/wood tops. Each table to have (1) one drawer.

**NIGHT TABLES (WBSA & WBDA)**

Stained oak wood w/wood tops. Rear table to have one (1) drawer.

Front table to have one wood raised panel door.

**13" COLOR TELEVISION**

The 13" color television is built in and includes a remote control. TV is cable ready.

**WINDOWS**

Bedroom windows are horizontal double sliding windows. 6% light transmission tinted, laminated glass.

## CHASSIS

### **AIR BRAKE SYSTEM**

The motor home is equipped with dual service air brake systems for front, rear and tag axle brakes, with integral fail/safe operation; and manual/automatic rear spring (parking) brakes. The service brakes are completely independent systems, each including a reservoir and separate distribution lines and valves. The reservoirs are pressurized from a single compressor. Both service brake systems are brought into operation each time the brake treadle is depressed to slow or stop the coach. Reservoir pressure for each service brake system is monitored by a respective pressure gauge on the front panel; system failure(s) are indicated by low pressure readings, illumination of the low air failure lamp and sounding of buzzer.

To compensate for normal lining wear, each brake system is individually self-adjusting.

Protection against brake system failures is provided by fail/safe features. If the front brakes fail, operating the brake treadle still activates the rear service brakes to provide stopping capability.

If a failure occurs in the rear, the front service brakes and rear spring brakes provide braking action.

In the unlikely event of a failure where both service braking systems are disabled, the rear spring brakes will apply automatically and bring the vehicle to a stop.

### **AIR DRYER, COMPRESSED AIR SYSTEM**

The air dryer unit collects and removes moisture and contaminants from the compressor air output before the air reaches the reservoirs. This unit is different from a reservoir drain or an after cooler in that it provides dry air for the brake system by eliminating the possible accumulation of condensate in the system reservoirs. Note that each reservoir also has a drain cock on the bottom for draining accumulated moisture. This assures a long maintenance free life for air brake system components due to the removal of system contaminants.

### **AIR SCHRADER VALVE**

An air connection is provided in the engine compartment to allow the air system to be pressurized from a "shop" source without the necessity of starting the engine.

**AIR SUSPENSION**

The motor home is equipped with air suspension bags which cushion the front, rear and tag axles. Dumping these air bags when the vehicle is parked allows the rubber bumpers to come together and eliminate vehicle springiness. Switches in the driver's area control dumping and filling of the respective air bags.

A light in the driver's area illuminates to warn the driver that the system is dumped and not to drive the vehicle until the suspension is inflated.

**CRUISE CONTROL, INTEGRAL W/DDECII**

A driver controlled automatic speed control which is integral with the Detroit Diesel DDECII engine control. Controls are located on the shifter panel.

**DIESEL FUEL, 100 GALLONS FOR DELIVERY**

100 gallons of diesel fuel is installed in Fort Valley.

**EMERGENCY WARNING TRIANGLE KIT**

The kit included (3) fold out, reflective, red triangles in a plastic case with instructions for use.

**ENGINE, DETROIT DIESEL 8V92 THB DDECII**

(See WLWB chassis standard equipment section.)

**ENGINE STARTING REMOTE**

A separate key switch is located in the engine compartment to allow the engine to be started remotely. The switch is housed in a weather proof box.

**FIRE ALARM, AUTOMATIC, ENGINE COMPARTMENT**

This feature alerts the pilot of excessive temperatures in the engine compartment via sensors in the engine compartment and a visual and audible warning in the pilot's area.

**FUEL FILTER, AND WATER SEPARATOR, RACOR**

A racor fuel filter water separator/preheater is incorporated in the diesel fuel supply line and processes the fuel supply for maximum purity. The fuel filter also includes a built-in preheater which operates thermostatically from the 12 volt battery supply when the ignition is on. A water sensor lights the dash indicator when the water level in the filter bowl is high enough to require drainage.

With diesel generators, the diesel fuel for the generator also goes through the racor filter with check valves to protect each engine from drawing air.

The racor gauge shows the condition of the racor filter in terms of fuel line vacuum. High vacuum readings indicate when the filter element requires changing. This gauge is located in the driver's overhead dash.

#### **FUEL TANK, 300 GALLONS**

The diesel fuel tank is located between chassis frame rails in the midsection of the coach. A "Low Fuel" level indicator and a contamination indicator included in the pilot's area. Dual fuel fill one each side of body.

#### **GENERATOR, 15KW, DIESEL POWERED**

The generator is driven by a 4 cylinder water cooled diesel engine and is located in a sound proof compartment between the chassis frame rails at the front of the coach. The engine/generator set is mounted on a roll out carriage using spring type vibration isolators with a telescoping exhaust system. The carriage is powered in and out of the compartment for service by a 12 volt electro-mechanical linear actuator. Operation of the generator may be controlled from one outside or three inside remote locations.

1. From driver's area
2. From kitchen galley panel
3. From bedroom control panel

Remote gauges are included on the over head dash to monitor the generator operation.

#### **HEATER, ENGINE BLOCK**

A 120 volt element that heats water in the engine block. On-Off operation is controlled by a switch located in the kitchen base cabinet.

#### **HITCH, TRAILER, RECEIVER TYPE**

10,000 lbs towing capacity and 1,000 lbs torque weight capacity receiver type hitch.

#### **HITCH, TRAILER DRAWBAR**

Removable receiver type draw bar with 2" diameter chrome hitch ball. The 2" ball provided is rated at 5,000 lbs, larger capacity draw balls must be ordered by option.

**HOOKS, TOW**

Two tow hooks are located at the front of the coach.

**MUD FLAPS**

Individual rubber mud flaps with Blue Bird logo, are installed at the rear of the front and rear tires.

**QUICK START AID**

A remote switch on the dash operates the ether injection system to aid engine starting in cold weather.

**RETARDER**

A transmission retarder is provided to assist in slowing and stopping the coach, thus extending the life of the service brakes. Retarder controls are located in the pilot's area.

**TIRES, 12.00R X 22.50 ON FORGED ALUMINUM WHEELS**

(See chassis standard equipment section.)

**TRAILER PLUG**

The female receptacle is installed in the rear of the coach and wired into the electrical system. The male portion is supplied loose in coach for installation by owner on towed vehicle.

**WHEEL SAVER**

A plastic wheel saver is located in an outside compartment. This disc is to be used when removing or torquing lug nuts on wheels.

## ELECTRICAL

### A/T SWITCH

The A/T switch on the upper dash controls all 12V circuits except the digital clocks, monitoring panel and burglar alarm. This switch allows power to be shut off to all 12V circuits except as noted to conserve battery. This switch also serves as an anti-theft feature.

### ALTERNATORS. DUAL 160 AMP

Unit is equipped with (2) 12 volt negative ground 160 amp alternators. An alt/chgr. amp gauge located on the upper dash shows output current of alternator 1 or 2 or the sum of alternators 1 and 2 depending on the position of the alt. amps switch. When parked with a source of 120 VAC, gauge shows total output of the battery charger. An alt. amps switch on the lower dash selects the display mode of the alt/chr. amps gauge. An indicator lamp next to switch indicates if a faulty condition occurs with either alternator.

### ANTENNA. TV. POWER

The TV antenna is roof mounted and remotely rotated by controls located in the RH front overhead dash cabinet and in the bedroom. An in-line antenna signal amplifier is operated on 12 volts. The antenna includes a raising/lowering feature with 12 volt electric switches located on the pilot's overhead dash and in the bedroom. These switches are wired parallel. An audible and visual warning on the left hand over head dash panel is provided when the antenna is not retracted and the ignition key is turned on.

The video selector switch is used to select antenna or cable reception and is located in the left hand front over head storage compartment.

### BATTERIES. CHASSIS. 12 VOLT MAINTENANCE FREE

Three 12 volt 925 CCA maintenance free batteries wired parallel produce power for starting the coach engine.

### BATTERIES. COACH (4) 12 VOLT

Four 12 volt, deep cycle batteries are provided. Batteries are located in the curb side rear compartment. Batteries are wired parallel to produce 12 volt power. These batteries supply power for the coach interior and are used for generator starting. The batteries are mounted on a roll out tray.

**BATTERY CHARGERS. (2) 45 AMP**

Two 45 ampere battery chargers automatically operate whenever a source of 120 volts AC is supplied to the coach circuits. These chargers also charge the engine battery whenever there is a source of 120 volts AC.

A high/low amperage switch located in the utility compartment charges the batteries as follows. The high position gives 90 amps of charge. The low position gives 45 amps of charge.

**BURGLAR ALARM SYSTEM**

An intruder alarm system protects windows and entry door. Windows are activated by a magnetic proximity switch or two (2) microphone/sound sensors that detect glass breakage (located in bedroom and livingroom area.) Entry door uses a door jamb switch. Panic switch located in bedroom panel enable siren at anytime. System is enabled with a small key chain wireless transmitter.

**CABLE CONNECTION & CABLE FOR CABLE TV HOOKUP**

The utility compartment includes a connection for cable tv hookup and a 25' coax cable.

**CHIME, DOOR**

A multitune electronic door chime, which can be preset, is provided. A button is provided on the outside of the coach adjacent to the entrance door for operation.

**ELECTRONIC MASTER SWITCH**

An electronic master switch is located in the left front overhead storage compartment. This switch allows the 12 VDC circuits in the coach, which are not controlled by the A/T switch, to be disabled thus avoiding draining the batteries when the coach is not in use.

**FREEZER, WIRING ONLY**

12 VDC/120 VAC receptacles are located in the curb side center storage compartment.

**HEATER, WATER, WITH HEAT EXCHANGER**

The water heater is a fiberglass jacketed coil type which insures a continuous supply of hot water. Heating of water is assisted in transit through heat exchangers and by LP system when in use. When the LP heat system is off, the electric heater will heat water when 120 volts is provided from the shoreline or the generator. Water heater capacity is 10 gallons. A water heater switch is located in the kitchen base cabinet.

**INVERTER. 2800 WATT**

An inverter is located in the right hand rear compartment. The inverter will power all accessible outlets in the coach as well as the ice maker, televisions, microwave oven, opera light and 120 V fluorescent lights as long as the power demand is below 2800 watts. The remote panel for control and status of the inverter is located below the shifter panel.

**KOOL-O-MATIC FAN**

The fan is a 12 VDC power ventilator located in the kitchen. The fan is thermostatically controlled by the area thermostat located in the kitchen. Includes a wood frame painted to match the ceiling vinyl and a sliding cover.

**LOAD CENTER**

The load center has 100 amp capacity @ 240 VAC. The load center is located on the curb side in the Davenport area.

**MONITORS. POWER LINE. 120 VAC**

A dual power line monitor is located on the right hand overhead dash panel, to monitor the voltage in both legs of the ac shoreline supply (or generator supply). The monitors have a polarity and ground detector circuit to indicate possible electrical hazards due to incorrect hookups.

An additional power line polarity monitor is located in the shoreline/utility box.

**OUTLETS. LAND LINE PHONE**

Two outlets are provided and are wired to the female plug in the utility compartment. Outlets are behind the sofa and on the bedroom wall adjacent to the road side night table.

**POWER CORDS**

Approved power cords supply the coach for hookup to external power sources. Each cord has a ground pin which provides proper electrical system grounding. Divided storage for power cords is provided in an outside compartment.

<u>QTY</u>	<u>FEMALE/MALE</u>	<u>VOLTS</u>	<u>LENGTH</u>
1	50A/30A	120	1.5 FT.
1	30A TWISTLOCK/30A	120	25 FT.
2	30A/20A	ADAPTER	NA
1	50 AMP	220	25 FT. FIXED
2	30 AMP/30 AMP EXT	120	25 FT.

In addition to the fixed 50 amp power cord, the coach also includes a 30 amp service hookup.

### **SPLIT BATTERY POWER SYSTEM**

Two separate battery systems are provided:

1. Coach Battery System
2. Chassis Battery System

Coach battery system supplies all 12V power for all interior items and exterior lighting as well as generator cranking. The chassis battery system provides power for engine cranking and ignition. The two systems are tied together only by the AUX battery switch on the lower dash and when the alternator is charging.

### **SPOTLIGHT**

A remote control high intensity spot/flood light with dual high output sealed beam lamp producing 200,000 candle power is installed on roof and can be positioned horizontally or vertically. Controls are located on the overhead dash.

### **STEREO SYSTEM, BEDROOM**

Stereo system featuring a tuner cassette sound system; tuner cassette features direct access tuning, 18 channel preset memory, seek and manual tuning, Dolby B noise reduction, metal tape capability and loudness switch, includes two full range coaxial speakers and 16 watts of power.

### **WIRING, CELLULAR PHONE WITH ANTENNA**

An antenna and wiring is supplied for the customer to hook up a cellular phone. The antenna is roof mounted. Wiring terminates in the driver's area.

## EXTERIOR

### **AIR OUTLET AUXILIARY**

An auxiliary air outlet from the chassis accessory air tank is located in an exterior storage compartment. An air hose and gauge is included.

### **AWNING, INDIVIDUAL BEDROOM, CURB SIDE**

Awning is color coordinated to complement the exterior paint design.

### **AWNING, PATIO CURB SIDE**

The patio curbside awning is color coordinated to complement the exterior paint design. The awning extends over the dinette window.

### **AWNINGS, INDIVIDUAL, ROAD SIDE**

Awnings over the following windows are color coordinated to complement the exterior paint design: Bedroom window, kitchen window, & living room window

### **BASE COLOR, INDIAN SILVER**

Indian silver is the standard base color .

### **BUMPERS, HIGH STRENGTH ALUMINUM WITH ABS COVER**

Bumpers are made of structural steel in front and aluminum in back with high impact ABS facade, painted to match paint design.

### **FENDERS, FIBERGLASS PAINTED**

The fenders are painted to match the accent colors on the coach.

### **GRILL, LPG, PORTABLE**

The portable freestanding LP grill stores in an exterior storage compartment. Quick disconnect supply lines, cutoff valve, and LP gas accessory line is included. Grill is fueled from the coach LPG system.

### **HANDLE, ASSISTANCE ENTRANCE DOOR**

The entry door assist handle is located on the exterior of the coach to the left of the entry door. The assist handle is a clear acrylic handle which is lighted when the RH porch light is on. Assist handles are also located on the interior of the coach on each side of the step well.

**HORNS, AIR**

Dual horns with covers are roof mounted, one on each side of the coach. Horns are activated by a foot switch in the driver floor board or by the horn button.

**KEYLESS ENTRY SYSTEM**

A keypad is located adjacent to the entrance door. By entering a preset code the entrance door dead bolt lock is unlocked. This keyless entry system will also unlock the optional electric locks on the luggage compartment doors.

**LIGHTS, LANDING, LEFT AND RIGHT SIDE**

The 12 VDC recess mounted lights are located at the front and rear of the coach on both sides. Switches are located on the lower dash.

**LIGHT, PORCH, RH SIDE**

An amber, double bulb fluorescent light is located high and to the rear of the entry door. The light is operated from a switch on the entrance door control panel.

**LIGHTS, FOG OR DRIVING**

Clear fog or clear driving lamps are mounted stationary in the front bumper. The fog illuminate on low beam and the driving on high beam, provided the corresponding dash switch is active.

**LIGHTS, PARKING, REAR**

These lights operate when the switch located on the lower dash is activated and vehicle is in reverse gear.

**LUGGAGE COMPARTMENTS**

The luggage compartments are lined with carpeting on floors and vertical walls. Luggage compartments include lights which are activated by the individual door switches. The doors are parallelogram type and are gas spring operated.

**MIRRORS, REAR VIEW, DUAL REMOTE CONTROLLED & HEATED**

Exterior rear view mirrors are heated and remote controlled. Mirrors are non glare with cast aluminum heads and arms and an integral convex rear view mirror. The convex and flat mirrors operate from controls located in the driver's area. A mirror heat switch is located on the lower dash panel.

**PAINT DESIGN, VISION, STANDARD**

Four color paint scheme (including base color). Colors can be customer selected at no extra charge.

**STEP, ENTRANCE DOOR, AIR OPERATED**

The air operated entrance door step extends when the door is open and retracts when the door is closed. A rubber covering is over the entrance steps. A switch is provided on the lower dash and on the co-pilot's panel which allows the step to remain in the extended position. A light is located adjacent to the switch to alert the driver that the step is extended.

**TOOLBOX**

The tool box is a 6 drawer type mounted on a slide out tray in an exterior storage compartment. (Tools are not included.)

**WATER FAUCET, EXTERIOR**

An exterior water faucet is located in the road side third luggage compartment.

**WATER HOOK UP, COMMERCIAL**

The water supply system is dual purpose and has a commercial water inlet connection that is located on the outside of the coach on the roadside rear. Commercial water hookup can be used to supply all coach water system requirements in the campsite. Coach includes a quick disconnect for hooking up to commercial water.

**WATER HOSE**

A 25 ft. water hose is placed loose in an outside compartment.

**WINDSHIELD WIPERS**

Dual 2-speed electric intermittent wipers with non glare arms and blades. Wiper arms are 26" parallelograms with 24" blades. Wipers have a delay position with the delay control on the lower dash. A washer fluid reservoir is located in the road side front compartment.

## GENERAL INTERIOR

### CARPET

Carpet is standard for all areas of the coach except the bathroom, and kitchen. In addition loose carpet mats are included to be used on the steps in the step well.

### DRAPES, ELECTRIC

The living room drapes are operated from switches located in the bottom of the left hand and right hand living room cabinets. Drapes are operable from a 120 VAC source (shoreline, generator or inverter). Bedroom drapes are operated from switches on the bedroom panel.

### FIRE EXTINGUISHER

Two halon type extinguishers with a gauge are provided. One is located in the living area of the coach and another is located in an exterior compartment.

### HEADLINER, ROLLED AND PLEATED

Consists of individually wrapped panels 16" wide attached to ceiling substrate with panel clips. Each panel is wrapped with vinyl with one-fourth inch thick polyethylene foam. These panels are removable for replacement or repair. These panels will be in the ceiling of the living area only. Ceilings of closets, cabinets, etc. will have carpet type ceiling glued in place.

### INTERIOR PACKAGE, OAK

Stained oak will be the standard wood. All interior walls will be wood and/or wallpaper. All cabinets will be wood except living room overhead cabinets which will be vinyl wrapped.

### LPG LEAK DETECTOR SYSTEM

The gas leakage detector, sounds an alarm and closes down the main LPG supply in the event of an LPG leak.

### SCREENS WINDOW

Sliding screens to cover any sliding window section on all 6% translucent windows.

**SMOKE DETECTOR**

A smoke detector is installed in the ceiling.

**VACUUM CLEANER, ROLL-A-BOUT**

A portable roll-a-bout vacuum cleaner with a flexible hose and wand, carpet upholstery, and crevice attachments are placed loose in closet.

**WINDOW TRIM**

Oak window trim is installed on all windows in the coach.

**WINDOWS****LIVING ROOM, KITCHEN & DINETTE**

Horizontal single sliding, aluminum sash with spring loaded latches. 6% light transmission tinted, laminated glass.

**DRIVER & COMPANION**

Horizontal double sliding, aluminum sash, with spring loaded latches and 70% light transmission tinted laminated glass.

**BEDROOM**

Horizontal double sliding, aluminum sash with spring loaded latches and 6% light transmission tinted, laminated glass.

## HEATING & AIR CONDITIONING

### AIR CONDITIONER, AUTOMOTIVE, 18,000 BTU

The air conditioner is an 18,000 BTU chassis engine driven unit. Temperature control and dual three speed blower controls are located on the pilot's over head dash panel. This system provides air conditioning for the pilot and co-pilot's area only. Four adjustable louvers are provided in the over head panel. Two outlets aimed toward windshield for defogging.

### AIR CONDITIONER, CONDENSATE DRAIN

Separate drain lines are provided for each air conditioning unit to route condensation from the roof to the ground through the body side walls.

### DUCTED ROOF AIR CONDITIONER, W/REMOTE THERMOSTAT

Air conditioners and wall mounted thermostats are located in the following areas: driver's area, living room and bedroom. AC/heat master switches are provided which allow the units to be started or stopped for the driver's area. The air conditioners are operable from 120 VAC source (generator or shoreline power).

### FREEZE PROTECTION

Heat tape to be installed on all fresh water plumbing vulnerable to freezing conditions. A 120 VAC heat strip is also installed at water pump location in outside compartment.

### HEATER, CHASSIS, DASH AREA

A 90,000 BTU heater is located at the right front corner and controlled by the heat selector switch on the dash.

### HEAT, ELECTRIC

Electric forced air heaters are located in living room and bath, controlled by remote thermostats. AC/heat master switch control the living room heater from pilot's area.

**HEAT, LPG HYDRONIC, W/HEAT EXCHANGERS**

Hydronic heat system will consist of the following:

- 2- LP Boilers with pumps  
Natural Convectors
- 1- 10,000 BTU power blower under kitchen base – WLWB, WBSA, WBDA
- 1- 10,000 BTU under bath vanity – WLWB, WBSA
- 1- 10,000 BTU in toekick of rear hall cabinet – WBDA
- 1- 4,000 BTU power convection between bed and night table – WBDA and WBSA
- 2- Control Panels (one in driver's area and one in bedroom)
- 2- Heat Exchanger located on RH frame rail at Tag Axle (this serves as engine preheat and supplies motor aide heat as well as water heater assistance)

## KITCHEN / DINETTE

### **BLINDS, VENETIAN (KITCHEN)**

The blinds are tension type and are installed inside the window trim.

### **COOK TOP, GAS**

The two-burner cook top is fueled by the coach LPG system. Unit includes a 120 VAC electronic ignition.

A cook top cover made of CORIAN is provided. The cover is hinged.

### **COUNTERTOP**

The countertop is CORIAN with brass accent trim.

### **CUTLERY TRAY**

A plastic tray is installed loose in an upper drawer in the kitchen base cabinet for storing kitchen utensils.

### **DINETTE, FOUR PLACE (WLWB)**

The dinette is a four place bench type. The table top is CORIAN with brass accent trim. Cushioned bench-type seats are fabric covered and color coordinated to the interior decor. Base is oak wood. The table is mounted on a canter- lever leg.

#### **NOTE**

This dinette does not convert to a bed.

### **DINETTE, THREE SEAT, CORIAN TOP (WBSA & WBDA)**

This dinette consists of one double booth type seat and one single booth type seat and a CORIAN table with brass accent trim.

### **DISHTOWEL RODS**

A dishtowel rack is installed inside the kitchen base cabinet door.

### **FLOOR, PARQUET, WHITE OAK (WLWB, WBSA & WBDA)**

White oak parquet flooring in kitchen and dinette area.

### **FOOD CENTER**

The built in variable speed motor driven counter unit is designed for AC operation. Operable only when generator is on, or when coach is connected to shoreline hookup. Food center includes blender.

**GALLEY PANEL**

The systems monitoring and control panel, is located in the kitchen base cabinet. This panel provides a convenient means of displaying potable water level, holding tanks, and LPG supply, as well as other functions listed below.

1. **Water pump switch w/indicator light** - to indicate when power is being supplied to pump.
2. **Refrigerator alarm** - monitors the refrigerator temperature when the switch is on. An audible alarm sounds if unsafe temperature levels are encountered.
3. **Generator switch** - controls the stop/start operation of the generator.

**INSTANT HOT WATER HEATER**

A 120 VAC hot water heater is located under the kitchen cabinet with a spout located adjacent to the sink. The instant hot water heater supply line is connected to the water purifier. A red lighted master switch is located under the kitchen counter to alert coach occupants that the heater is "ON".

**ICE MAKER**

The ice maker, located in the kitchen base cabinet behind door, is designed to provide a continuous automatic supply of ice cubes. The ice maker operates from shoreline, generator or inverter.

**LIGHTING, FLUORESCENT, INDIRECT****WLWB**

A 12 VDC light bar with three spotter lights are mounted at the kitchen and dinette overhead cabinet. A 12 VDC thin-lite is mounted under the kitchen and dinette overhead. Two 12 V spotter lights are located under the dinette overhead.

**WBSA & WBDA**

A 12 VDC light bar with four spotter lights are mounted at the kitchen. A 12 VDC light bar with three spotter lights is mounted at the dinette. A 12 VDC thin-lite is mounted under the kitchen and dinette overhead. Two 12 V spotter lights are located under the dinette overhead.

**MICROCONVECTION OVEN**

The microconvection oven is mounted above the gas cook top and is powered by either shoreline or generator and by the inverter. It includes a light under the microwave oven and a temperature probe and vent.

**MIRRORS (WLWB)**

Clear safety backed mirrors are provided on the wall behind and adjacent to the cook top. These mirrors are framed with oak trim.

**MIRRORS (WBSA & WBDA)**

Clear safety backed mirrors are provided on the wall behind and adjacent to cooktop.

**PANTRY, SWING-OUT (WBDA)**

Large (6) six shelf vertical pantry swings out of wall for easy access to stores foods. The swing out pantry is built into the wall adjacent to refrigerator.

**PANTRY, PULL-OUT (WLWB)**

The (4) four section vertical pantry is mounted behind (2) doors on slides for easy access to supplies. Each section has one adjustable shelf. The pull out pantry is built into the wall adjacent to refrigerator.

**REFRIGERATOR/FREEZER**

An automatic energy seeking refrigerator with separate doors for freezer and refrigerator sections. The refrigerator automatically operates on LP gas or it may be electrically powered on 12 volts while traveling or on 120 volts from generator or shoreline. The refrigerator doors are wood raised panels. Storage compartments are provided above the refrigerator.

**SAFE (WLWB & WBDA)**

The safe is located under the dinette seat base and is bolted to the floor. The lock is operated by a key.

**SHADES DAY/NIGHT**

Tension shades are installed for the dinette window and are installed inside the window trim. The shades are color coordinated to the interior decor.

**SINK (WLWB & WBSA)**

Drop in enamel double bowl sink includes spray attachment and single lever faucet.

**SINK (WDBA)**

Drop in enamel single bowl sink includes spray attachment and single lever faucet.

**WASTE BASKET**

A plastic waste basket is included under the kitchen base cabinet.

## LIVING ROOM

### COMPANION CHAIRS

#### (WLWB & WBSA)

Includes (2) two chairs. Chairs are covered in fabric and mounted on a swivel base.

#### (WBDA)

Includes (1) one chair covered in fabric. The chair is mounted on a swivel base.

### LIGHTS. BULLET

12 VDC lights are installed in the bottom of the over head cabinets and are controlled by separate toggle switches, one on each side of living room.

### LIGHTS. FLUORESCENT

12 VDC recessed fluorescent fixtures are installed in the bottom of the over head cabinets. 120 VAC fluorescent fixtures located above overhead cabinets provide indirect lighting.

### SOFA

Sleeper sofa w/built-in serving tray in each arm is fabric covered. Includes (2) two throw pillows and (2) two arm covers.

### END TABLE (WLWB & WBSA)

The table is located at the rear of the sofa. Table is wood with (1) one door and (1) one adjustable shelf.

### END TABLE (WBDA)

The table is located at the end of the living room chair. Table is wood with three (3) doors and one (1) drawer. Ice maker is housed at rear end of table. Table top is made of wood.

### TABLE. ALL WOOD (WLWB & WBSA)

Table will have a raised panel door. Side wings are located on each side of the table for magazine storage. Table top is made of wood.

## MECHANICAL SYSTEMS

### **BULK OIL FILL, DIRECT INJECTION INTO BLOCK**

The bulk oil fill feature includes a pressure operated system to allow the owner to select an amount of oil to be pumped into the engine. An oil storage tank (approx. 20 qt. cap.) is located on the RH side of the engine compartment. A meter is provided to measure quantity and a totalizer to track all oil added to date.

### **LEVELING JACKS, HYDRAULIC, AUTOMATIC**

Includes (4) Hydraulic operated leveling jacks. Controls for automatically leveling the unit in the campsite are located on the wall next to the driver.

### **TANK, FRESH WATER, 137 GALLON**

The tank is located beneath the bed. The tank is non-pressurized type so that system water pressure is developed by a demand pump when not connected to commercial water. Tank is equipped with a two-inch drain.

### **TANK, LPG**

One hundred forty-eight pounds of LPG or liquified petroleum gas is stored in a 45 gallon frame-mounted tank. LP gas is the energy source for the refrigerator, cook top and Hydronic Heat Boilers. Tank controls include main gas valve, pressure regulator, filler connection 20% relief valve. Tank level can be monitored on the galley panel digital display when the propane tank button is pressed. LP cutoff valve is located in outside LPG compartment and controls LPG flow to all coach systems.

### **WATER PUMPS, DUAL**

The central control switch for the water pumps is in the bathroom cabinet and has three settings. For a longer interval between water pump maintenance, select either "Pump A" or "Pump B". When one pump fails, the other pump can be used as a backup. For a higher flow rate, select "Pumps A & B".

A factory calibrated pressure control switch is preset to turn the water pump(s) on when the system pressure falls below 20 psi; and turns it/them off once pressure reaches 35 psi. Switches enabling the water pumps are located on the systems monitor panel, in the bathroom medicine cabinet, and dash area.

**WATER PURIFIER**

The bacteriostatic water purifier filters and purifies potable water to eliminate tastes, odor, and coloration produced by chlorine, rust bacteria, insecticides, detergents, sediments and other foreign objects. Satisfactory elimination of water-borne disease-carrying bacteria is accomplished by a hygienic filter bed which consists of silver ions absorbed on sponge silver metal which is deposited in a finely divided form on granular activated carbon of high surface area. The water purifier is connected to cold water supply of both the bathroom and kitchen sinks, the ice maker and instant hot water faucet. The water purifier is a self contained unit designed to purify 75,000 gallons before requiring replacement.

## PILOT / CO-PILOT AREA

### CB RECEIVER/TRANSMITTER

Forty-channel, cb receiver/transmitter is installed in the hood table with all controls in the hand-held portion. This unit includes left hand and right hand speakers with volume control located in the driver's and co-pilot's area.

### CLOSED CIRCUIT TELEVISION SYSTEM INCLUDES:

#### CAMERA

Located in the rear bulk head. The lens is pre-set to focus from about four feet to 300 feet. The camera is black and white only.

#### FAN

A fan is located in the rear view camera cavity to prevent fogging. Switch is located on left hand overhead dash panel.

#### MONITOR

Located on the lower dash panel by driver. Controls are located on LH lower auxiliary dash panel.

### STEPWELL AREA

An air powered stepwell cover retracts and extends from under the co-pilot's seat. In/out controls are located on the co-pilot's system control panel. An air override switch is located to the right side of the co-pilot seat to permit manual retraction in the event of low air pressure.

A 12v light is provided in the stepwell to facilitate entering or leaving the coach at dark. The light illuminates when the entrance step is in the extended position. A switch is provided on the entrance door panel which permits the light to be turned off if the step is left in the extended position.

### HOOD TABLE

The hood table includes (3) drawers. The upper drawer includes (2) stadium size cupholders.

### FOOTRESTS

Folding footrests are provided for the driver's left foot and the co-pilot.

**MUSICAL HORNS**

A solid state stereo programmed electronic horn which can play a number of tunes available from the integral computer storage library. This unit is located in the lower dash. Dual speakers are located on the roof.

**LOCK, ELECTRIC, ENTRANCE DOOR**

The entrance door includes an electric dead bolt lock with switches on the upper dash panel, on bedroom control panel and also on the entrance door control panel. Lock can also be manually operated from the keyless entry keypad switch adjacent to the entrance door.

**RADAR DETECTOR**

The unit provides a flashing red warning light and beeping signal indicating radar detection. A radar master switch is located on the lower dash to turn the unit on or off.

**SEAT, PILOT AND CO-PILOT**

Includes leather pilot and co-pilot seats with (6) six way adjustable power seats and electrically operated lumbar support. The adjustable lumbar support allows the driver or co-pilot to adjust the seat's lower back (lumbar) area to fit his or her lower back contour at the push of a button. The (6) six way controls adjust seat bench tilt up/down and front/back. In addition the pilot and co-pilot seat have a 360 degree swivel base. Includes retractable seat belts.

**SHADES**

Day/night tension shades are mounted on the driver, co-pilot windows. Shades are installed on the inside of the window trim and are color coordinated to the interior decor.

**SEAT BELTS, RETRACTABLE**

Retractable seat belts are installed for driver's and co-pilot's seats.

**LIGHTING, VALANCE**

12 V bullet lights are provided in the pilot and co-pilot cabinets. These lights operate independently from separate switches.

**STEERING WHEEL WITH TILT AND TELESCOPING COLUMN**

Steering wheel is a 20" diameter wheel upholstered in leather. Includes two flat black rally type spokes tapering below the center of the wheel. The steering wheel tilt control allows multiple positioning of the steering wheel in increments of 7 degrees. Includes telescoping steering column which can be locked at infinite locations within it's telescoping range of 2.25 inches.

**STEREO SYSTEM**

Tuner cassette features direct access tuning, 24 channel preset memory, seek and manual tuning, dolby B noise reduction, metal tape capability, and loudness switch. Includes four full range coaxial speakers in the front living area.

**STORAGE COMPARTMENT, FRONT OVER HEAD**

Storage compartments are provided on the left hand and right hand side of the front over head dash area.

**TELEVISION, FRONT OVERHEAD**

A built-in 20" stereo color tv/monitor. TV has remote control, stereo MTS broadcast reception, audio video inputs, and is cable compatible. This television will not operate while in transit.

**VCR**

To be mounted in front overhead cabinet above pilot. Video selector switch is installed in the front overhead cabinet above the pilot, which permits independent switching of two VCR's. TV antenna, tv cable and tv game to the two television sets. Only one VCR comes as standard.

**VENTS, FRESH AIR**

Air powered bumper-mounted fresh air vents for the pilot and co-pilot are provided. Switches are located on the right hand upper panel.

**TRIP ODOMETER**

Indicates miles driven since last reset. Includes a reset bar. The odometer is located on the overhead dash panel.

**SAFELINE ALARM**

An audible and visual alarm in the driver's area is activated when the ignition key is turned on while coach is connected to shoreline power and TV antenna is in up position.

**WINDSHIELD BLIND**

A blind that extends across the pilot and co-pilot area is provided. Hooks are provided in the bottom of the overhead to secure the blind while in transit.

**VISOR, SUN**

Visors are provided for the pilot and the co-pilot. Visors are tinted and can be positioned as desired.

**DUAL MIRROR CONTROLS**

Located in the driver's auxiliary dash panel are two remote mirror controls. The control to the left controls the upper flat rear view mirror (std). The control to the right controls the lower convex (wide angle) rear view mirror. Each control provides full adjustments as indicated by the arrows on the switches.