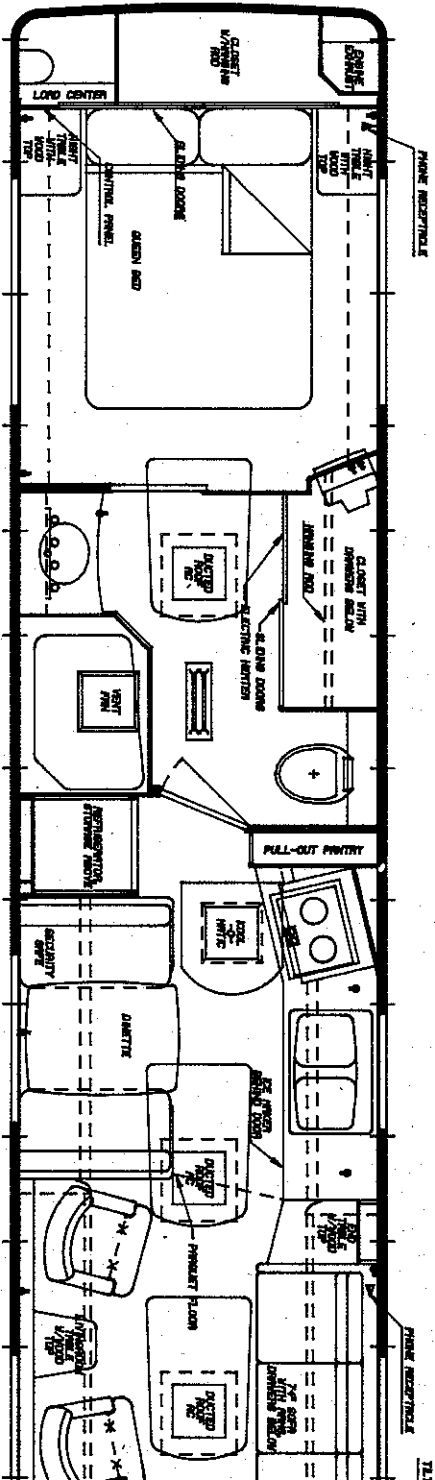


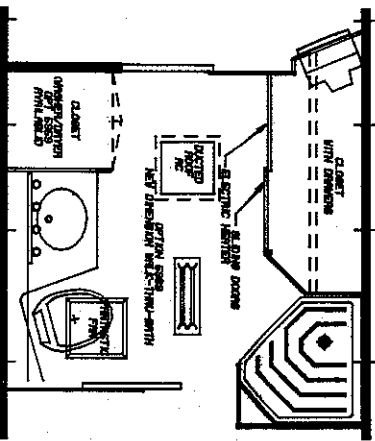
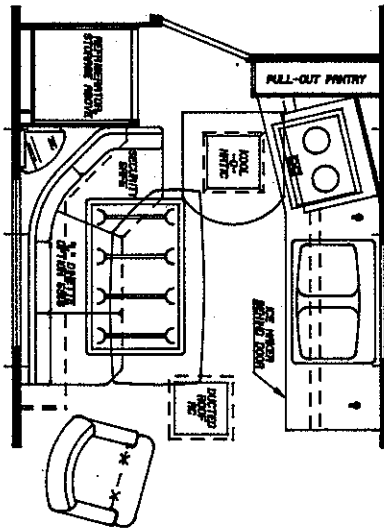
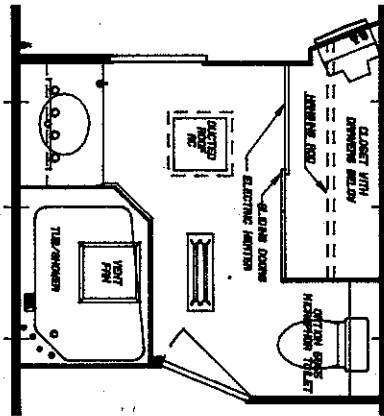
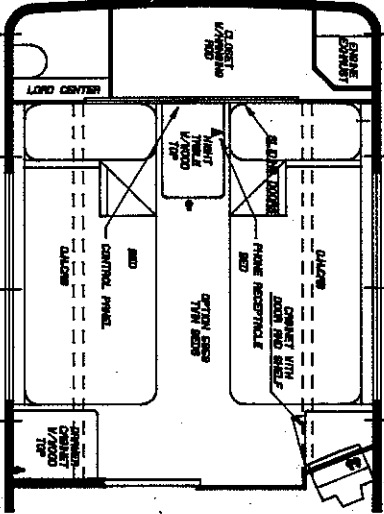
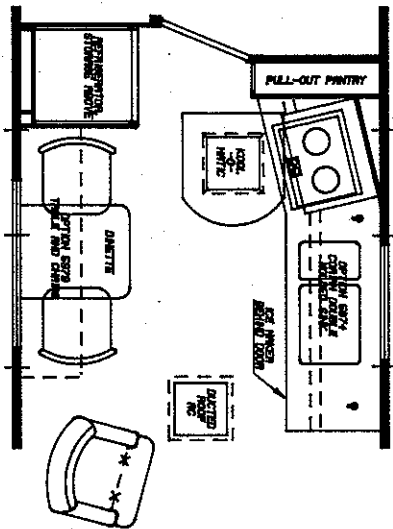
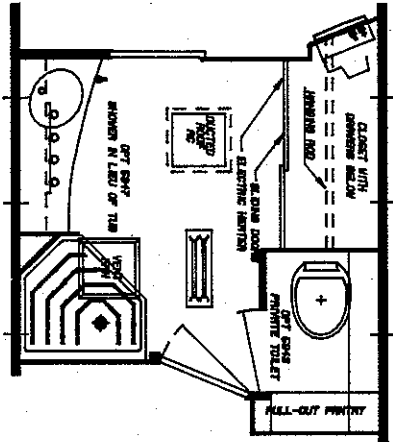
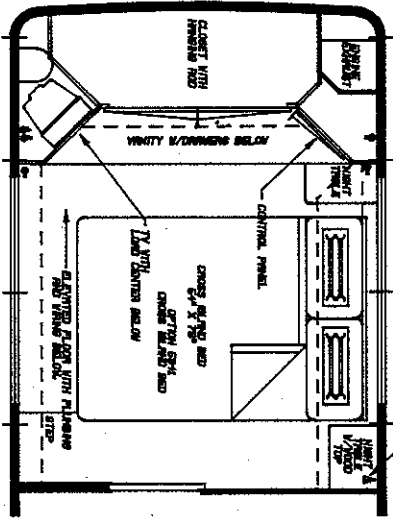
**1991
WANDERLODGE
SALES
DATA BOOK**

SPECIFICATIONS AND/OR FEATURES SHOWN ARE
SUBJECT TO CHANGE WITHOUT NOTICE



3972841 - FLOORPLAN, 3907 WLWB 1991, ST

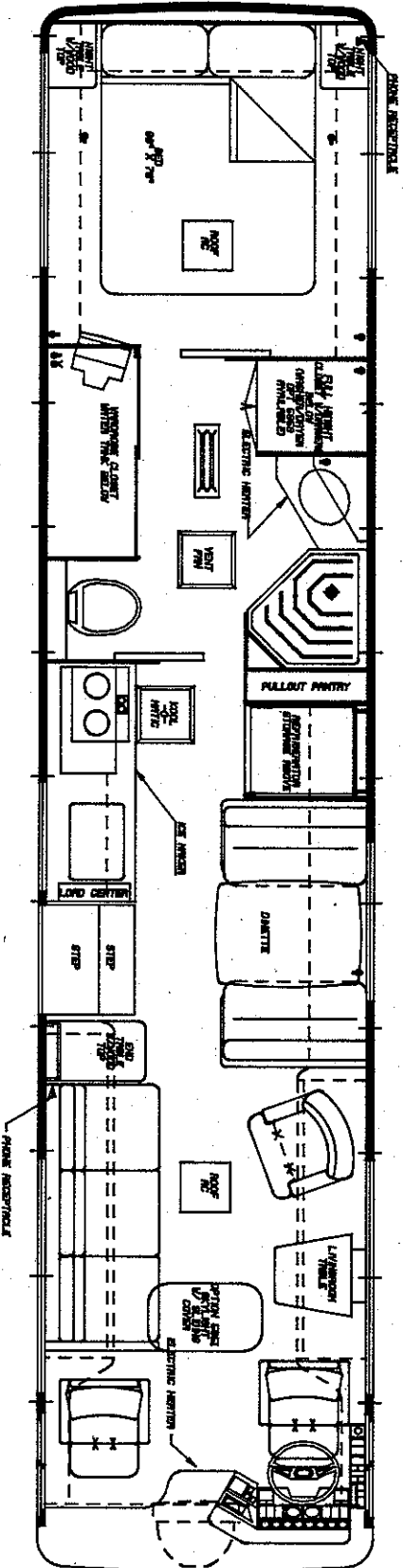
SPECIFICATIONS AND/OR FEATURES SHOWN ARE
SUBJECT TO CHANGE WITHOUT NOTICE



3972858 - FLOORPLAN, 3907 WLWB 1991,
OPTIONAL EQUIPMENT

WLWB

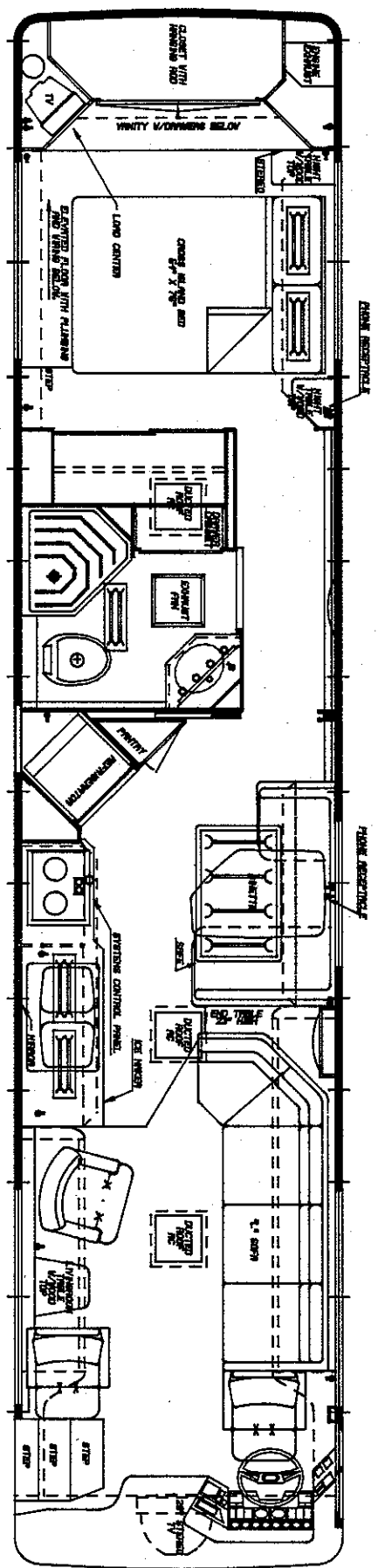
SPECIFICATIONS AND/OR FEATURES SHOWN ARE
 SUBJECT TO CHANGE WITHOUT NOTICE



3972882 - FLOORPLAN, 3608 WLSP 1991, STANDARD

WLSP

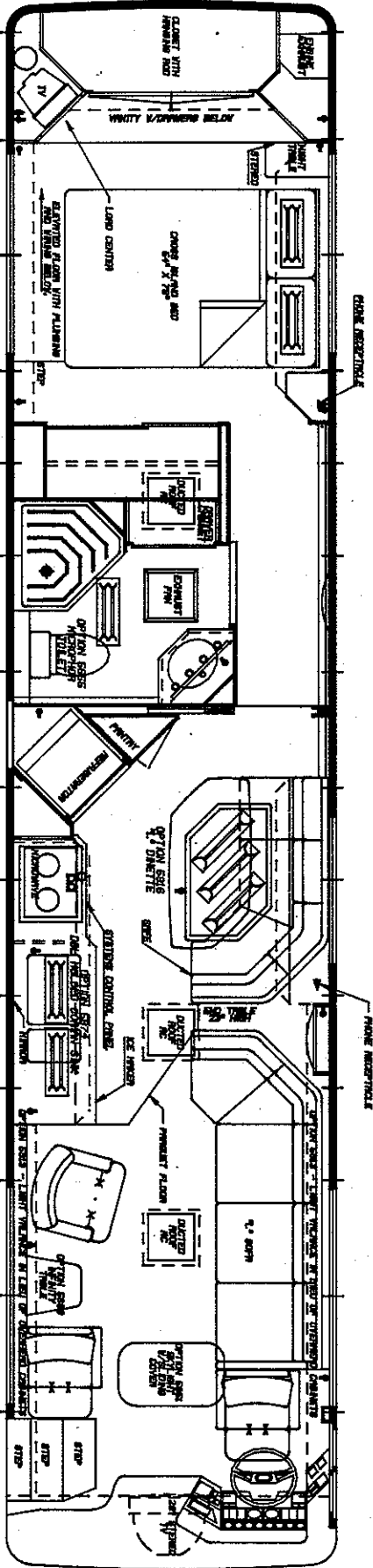
SPECIFICATIONS AND/OR FEATURES SHOWN ARE
SUBJECT TO CHANGE WITHOUT NOTICE



3972866 - FLOORPLAN, 3907 WBSA 1991, STANDARD

WBSA

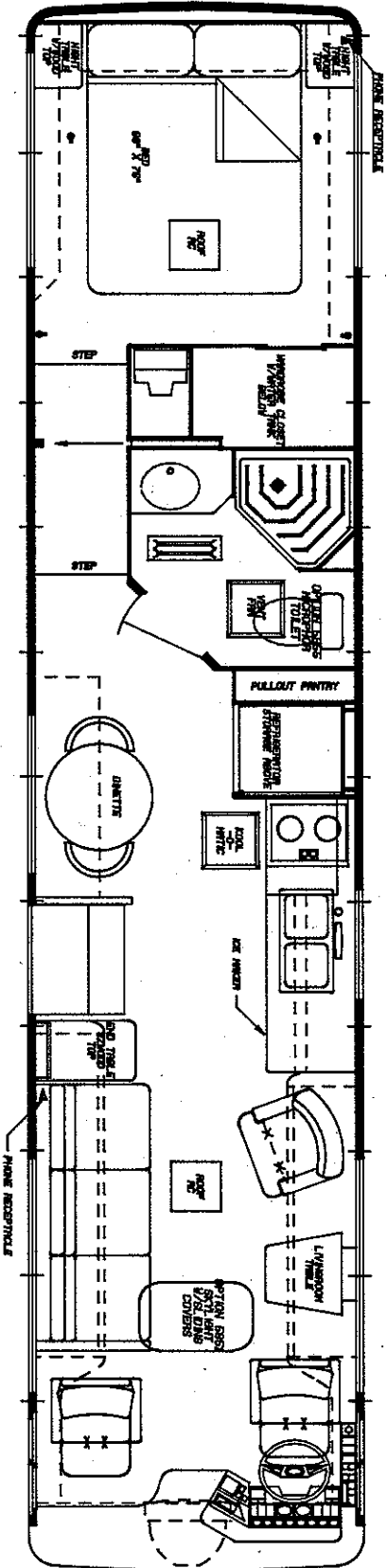
SPECIFICATIONS AND/OR FEATURES SHOWN ARE
 SUBJECT TO CHANGE WITHOUT NOTICE



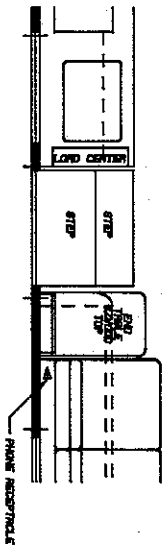
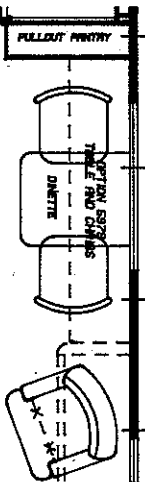
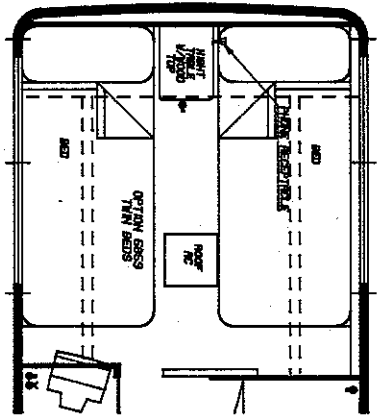
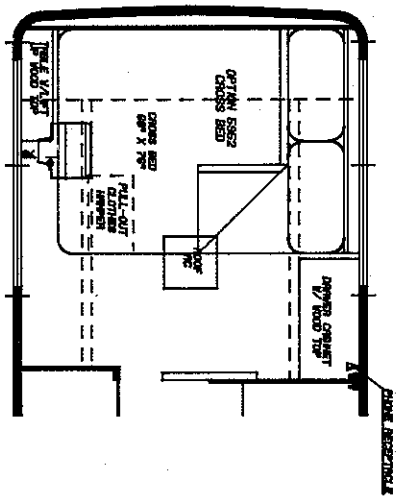
3972874 - FLOORPLAN, 3907 WBSA 1991,
 OPTIONAL EQUIPMENT

WBSA

SPECIFICATIONS AND/OR FEATURES SHOWN ARE
SUBJECT TO CHANGE WITHOUT NOTICE



SIDE AISLE (OPT 5981)



3972890 - FLOORPLAN, 3608 WLSP 1991

OPTIONAL EQUIPMENT

WLSP

WANDERLODGE WIDE BODY

CHASSIS STANDARD EQUIPMENT

ACCELERATOR (8V92T WLWB)

Electronic Accelerator with transmission computer link up for precise shifting.

AIR COMPRESSOR

12.0 CFM capacity @ 1250 RPM, gear drive

AIR RESERVE

Three tanks with 1760 cubic inch capacity each and one tank with 1240 cubic inch capacity

ALTERNATOR

Dual, 12 volt, 160 amp with integral regulator.

AXLES

14,600 # front; 23,000 # drive, single speed, 3.42 ratio; 10,000 # tag; all wheel bearings oil lubricated

BATTERY

Three, 12 volt, group 31, 2775 cold cranking amps @ 0 degrees F.

BRAKES, EMERGENCY

MGM 36" magnum piston type brake system with treadle valve control - separate instrument panel mounted valve provided for parking

BRAKES, SERVICE

The coach is equipped with a dual service air brake system which includes two independent systems for the front and rear service brake. The front system includes a 30" brake chamber with 16 - 1/2 x 5 brake shoes and the rear system includes a 30" brake chamber with 16 - 1/2 x 7

brake shoes (16" tag service brake chambers on all models) for a total of 1196 square inches of lining area. A Bendix air dryer is included with the air brake system. Each brake chamber has an automatic slack adjuster to compensate for brake shoe wear.

DRIVE LINE

Spicer 1810 series with protective guard around shaft

ELECTRICAL SYSTEM

12 volt

ENGINE

Detroit diesel engine, 8V92TA turbo charged DDEC II

EXHAUST SYSTEM

16 gauge aluminized steel with heavy duty muffler (5 inch diameter - inlet & outlet)

FUEL FILTER

Racor fuel filter water separator and preheater

FRAME

Channel 10 - 1/8" high with 3 - 1/2" flanges made of 5/16" 50,000 psi steel, section modulus - 14.8 In.³
Channels Doubled in high stress area - section modulus 40.9 In.³

FUEL TANK

300 gallon capacity

GROSS VEHICLE WEIGHT RATING

47,400 lbs. max.

HORN

Electrical dual

INSTRUMENTS AND GAUGES

Speedometer, odometer, ammeter, fuel level, oil pressure, water temperature, two air pressure gauges and low pressure warning light and buzzer for dual brake system, tachometer, air pressure gauge for tag air suspension system, pyrometer and boost gauge, engine oil temperature, transmission oil temperature, and transmission retarder oil temperature warning light

SHOCK ABSORBERS

Direct acting, double action piston type; front, drive, and tag

SUSPENSION

Ridewell air suspension, 15,000 # front, 25,000 # drive and 14,000 # tag. Front and drive systems utilize 4 air springs each, tag system utilizes 2 air springs

STEERING GEAR

Ross model HFB-70 with 23.3 to 1 ratio with integral power steering and tilt and telescoping steering wheel

TIRES

Tubeless 12R-22.5-H 16-ply rating Michelin steel cord radial with XZA thread, single front, dual drive and single tag turned to the outside

WHEELS

10 stud disc with 22.5 x 8.25 rims, polished aluminum, single front, dual drive, and single tag turned to the outside

TRANSMISSION

Allison automatic 5 speed electronic HT-755 with input retarder

ENGINE SPECIFICATIONS

MAKE

GM Detroit Diesel, 8V92TAC (DDEC II)

TYPE

2 Cycle diesel turbo charged, jacket water after cooled, electronic injection

NUMBER OF CYLINDERS

8-63-1/2 degree VEC

BORE (Inches)

4.84

STROKE (Inches)

5.00

DISPLACEMENT

92 Cubic Inches 736
Per Cylinder

COMPRESSION RATIO

18 to 1

TAXABLE HORSEPOWER

75.0

MAX. (Net) BHP @ RPM

450 @ 2100

MAX. (Net) TORQUE @ RPM

1425 @ 1300

MAX. GOV. RPM

LOAD	2100
NO LOAD	2425

GOVERNOR

Type Electronic

PISTON MATERIAL

Arma-Steel Tin Plated

CRANKCASE CAPACITY

DRY	25
(Quarts) Refill	23

1992 Wanderlodge Wide Body

CHASSIS STANDARD EQUIPMENT

ACCELERATOR (8V92T WLWB)

Electronic Accelerator with transmission computer link up for precise shifting.

AIR COMPRESSOR

12.0 CFM capacity @ 1250 RPM, gear drive

AIR RESERVE

Three tanks with 1760 cubic inch capacity each and one tank with 1240 cubic inch capacity

ALTERNATOR

Dual, 12 volt, 160 amp with integral regulator.

AXLES

14,600 # front; 23,000 # drive, single speed, 3.42 ratio; 10,000 # tag; all wheel bearings oil lubricated

BATTERY

Three, 12 volt, group 31, 2775 cold cranking amps @ 0 degrees F.

BRAKES. EMERGENCY

MGM 36" magnum piston type brake system with treadle valve control - separate instrument panel mounted valve provided for parking

BRAKES. SERVICE

The coach is equipped with a dual service air brake system which includes two independent systems for the front and rear service brake. The front system includes a 30" brake chamber with 16-1/2x5 brake shoes and the rear system

includes a 30" brake chamber with 16-1/2 x 7 brake shoes (16" tag service brake chambers on all models) for a total of 1196 square inches of lining area. A Bendix air dryer is included with the air brake system. Each brake chamber has an automatic slack adjuster to compensate for brake shoe wear.

DRIVE LINE

Spicer 1810 series with protective guard around shaft

ELECTRICAL SYSTEM

12 volt

ENGINE

Detroit diesel engine, 8V92TA turbo charged DDEC II

EXHAUST SYSTEM

16 gauge aluminized steel with heavy duty muffler (5 inch diameter - inlet & outlet)

FUEL FILTER

Racor fuel filter water separator and preheater

FRAME

Channel 10-1/8" high with 3-1/2" flanges made of 5/16" 50,000 psi steel, section modulus - 14.8 in.³ Channels Doubled in high stress area - section modulus 40.9 in.³

FUEL TANK

300 gallon capacity

GROSS VEHICLE WEIGHT RATING

47,400 lbs. max.

HORN

Electrical dual

INSTRUMENTS AND GAUGES

Speedometer, odometer, ammeter, fuel level, oil pressure, water temperature, two air pressure gauges and low pressure warning light and buzzer for dual brake system, tachometer, air pressure gauge for tag air suspension system, pyrometer and boost gauge, engine oil temperature, transmission oil temperature, and transmission retarder oil temperature warning light

SHOCK ABSORBERS

Direct acting, double action piston type; front, drive, and tag

SUSPENSION

Ridewell air suspension, 14,600 # front, 23,000 # drive and 10,000 # tag. Front and drive

systems utilize 4 air springs each, tag system utilizes 2 air springs

STEERING GEAR

Ross model HFB-70 with 23.3 to 1 ratio with integral power steering and tilt and telescoping steering wheel

TIRES

Tubeless 12R-22.5-H 16-ply rating Michelin steel cord radial with XZA thread, single front, dual drive and single tag turned to the outside

WHEELS

10 stud disc with 22.5 x 8.25 rims, polished aluminum, single front, dual drive, and single tag turned to the outside

TRANSMISSION

Allison automatic 5 speed electronic HT-755 with input retarder

ENGINE SPECIFICATIONS**MAKE**

GM Detroit Diesel, 8V92TAC (DDEC II)

TYPE

2 Cycle diesel turbo charged, jacket water after cooled, electronic injection

NUMBER OF CYLINDERS

8-63-1/2 degree VEC

BORE (Inches)

4.84

STROKE (Inches)

5.00

DISPLACEMENT

92 Cubic Inches 736
Per Cylinder

COMPRESSION RATIO

18 to 1

TAXABLE HORSEPOWER

75.0

MAX. (Net) BHP @ RPM

450 @ 2100

MAX. (Net) TORQUE @ RPM

1425 @ 1300

MAX. GOV. RPM

LOAD	2100
NO LOAD	2425

GOVERNOR

Type Electronic

PISTON MATERIAL

Arma-Steel Tin Plated

CRANKCASE CAPACITY

DRY	25
(Quarts) Refill	23

COOLING SYSTEM CAPACITY 24 1/2 gal
 (Quarts)98 (Including Heaters)
 Fan38" Diameter - 8 blades,
 hyd. drive

WATER PUMP CA. @ ENG. RMP
 187 G.P.M. @ 2100

ALTERNATOR
 Capacity 12 volt - 320 amp
 (dual 160 amp al
 ternators)
 Polarity Negative ground

OIL FILTER
 Type- Full flow,
 disposable

AIR CLEANER
 Type- Donaldson -
 dry type

EXHAUST SYSTEM
 Single 5" O.D. with one muffler

TRANSMISSION - Type

No. Speeds

Gears

First

Second

Third

Fourth

Fifth

Reverse

Torque Converter

Lubricant Capacity

Bellhouse size

Companion flange

Allison Automatic
 (HT-755) Electronic, ATEC
 5 Forward - 1 Reverse

Ratios

3.69

2.00

1.58

1.25

1.00

9.65

TC 496-1.83 Stall Ratio

31 qts. (includes filter & cooler)

SAE #1

1810 Spicer

TURNING RADIUS

<u>BODY MODEL</u>	<u>WHEELBASE</u>	<u>*CURB RADIUS</u>	<u>**WALL RADIUS</u>
3907 WLWB	247 IN.	33.7 FT.	38.5 FT.

* Curb radius is the distance from the drive axle center line to the outside edge of the front tire.

** Wall radius is the distance from the drive axle center to the outside edge of the front bumper.

NOTE: Turning radii is with standard 12R22.5 tires

COOLING SYSTEM CAPACITY

(Quarts)98 (Including Heaters)
 Fan38" Diameter - 8 blades, hyd.
 drive

WATER PUMP CA. @ ENG. RMP

187 G.P.M. @ 2100

ALTERNATOR

Capacity 12 volt - 260 amp (dual
 130 amp alternators)
 Polarity Negative ground

OIL FILTER

Type- Full flow, disposable

AIR CLEANER

Type- Donaldson - dry type

EXHAUST SYSTEM

Single 5" O.D. with one muffler

TRANSMISSION - Type

Allison Automatic
 (HT-755) Electronic, ATEC
 5 Forward - 1 Reverse

No. Speeds

Gears

First

Second

Third

Fourth

Fifth

Reverse

Torque Converter

Lubricant Capacity

Bellhouse size

Companion flange

Ratios

3.69

2.00

1.58

1.25

1.00

9.65

TC 496-1.83 Stall Ratio

31 qts. (includes filter & cooler)

SAE #1

1810 Spicer

TURNING RADIUS

<u>BODY MODEL</u>	<u>WHEELBASE</u>	<u>*CURB RADIUS</u>	<u>**WALL RADIUS</u>
3907 WLWB	247 IN.	33.7 FT.	38.5 FT.

* Curb radius is the distance from the drive axle center line to the outside edge of the front tire.

** Wall radius is the distance from the drive axle center to the outside edge of the front bumper.

NOTE: Turning radii is with standard 12R22.5 tires

TURNING RADIUS

<u>BODY</u>	<u>MODEL</u>	<u>WHEELBASE</u>	<u>*CURB RADIUS</u>	<u>**WALL RADIUS</u>
3608	WLSP	236 IN.	38.0 FT	43.0 FT

* Curb radius is the distance from the drive axle center line to the outside edge of the front tire.

** Wall radius is the distance from the drive axle center to the edge of the front bumper.

NOTE: Turning radii is with Standard 12R22.5 tires.

ENGINE SPECIFICATIONS

MAKE

Caterpillar, 3208TA (ATAAC)

TYPE

4 cycle diesel; valve-in-head; turbo-charged aftercooled

NUMBER OF CYLINDERS

8-90 degree vee

BORE (inches)

4.5 inches

STROKE (inches)

5.0 inches

DISPLACEMENT (cubic inches)

COMPRESSION RATIO

16.5 to 1

GROSS BHP @ RPM

300 @ 2800

PEAK TORQUE (LLB-FT) @ RPM

750 lb. ft. @ 1400 RPM

MAX. GOV. RPM

LOAD 2800

NO LOAD 3020

GOVERNOR

TYPE Hydra-Mechanical

PISTON MATERIAL

Aluminum Alloy

TAXABLE HORSEPOWER

64.8

CRANKCASE CAPACITY

Dry 20.0

(Quarts) refill 16.0

COOLING SYSTEM CAPACITY

Dry 20.0

(Quarts) Refill 16.0

COOLING SYSTEM CAPACITY

(Quarts) 61

FAN 29" diameter - 6 blade
with air clutch

WATER PUMP CAPACITY

@ ENG. RPM

90 GPM @ 2800

ALTERNATOR

CAPACITY

12 Volt - 160 Amp Motorola

POLARITY

Negative Ground

OIL FILTER

Type Full Flow - Two Disposable

AIR CLEANER

Type Farr-dry type (Eco II)

EXHAUST SYSTEM

Single 5" O.D. with one muffler
and one resonator

WANDERLODGE SINGLE PUSHER

CHASSIS STANDARD EQUIPMENT

ACCELERATOR

Air Control with high idle included in cruise control

ALTERNATOR

12 volt, 160 amp with integral regulator

AIR COMPRESSOR

12.0 CFM capacity @ 1250 RPM

AIR RESERVE

Four tanks - Two with 2072 cubic inch capacity each and two tanks with 1240 cubic inch capacity. Total capacity 6624 cubic inches.

AXLES

14,600 lb. front; 23,000 lb. rear, single speed 5.29 ratio; all wheel bearings oil lubricated

BATTERY

Two 12 volt, group 31, 1850 cold cranking amps at 0 degrees F.

BRAKES, EMERGENCY

MGM 36" magnum piston type brake system with treadle valve control. Separate dash mounted valve provided for parking

BRAKES, SERVICE

The coach is equipped with a dual service air brake system which includes two independent systems for the front and rear service brake. The front system includes a 30" brake chamber with 16-1/2 x 5 brake shoes and the rear system includes a 30" brake chamber with 16 - 1/2 x 7 brake shoes for a total of 755.4

square inches of lining area. A Bendix air dryer is included with the air brake system. Each brake chamber has an automatic slack adjuster to compensate for brake shoe wear.

CRUISE CONTROL

Bendix cruise control (includes high idle)

DRIVE LINE

Spicer 1710 series with protective guard around shaft

ELECTRICAL SYSTEM

12 volt

ENGINE

Caterpillar 3208 TA (AAAC) engine governed speed 2800 RPM

EXHAUST SYSTEM

16 Gauge aluminized steel with heavy duty in-line muffler

FILTER

Racor fuel filter water separator and preheater

FRAME

One-piece channel 10 1/8" high with 3 1/2" flanges made of 5/16", 50,000 psi steel, section modulus - 14.8 In³. Frame insert used in high stress areas at rear suspension, section Modulus - 24.55³.

FUEL TANK

200 Gallon capacity

GROSS VEHICLE WEIGHT RATING

37,400 LBS.

HORN

Electrical dual/air dual with selector switch

OIL FILL & CHECK

Located behind left hand rear engine compartment grill.

SHOCK ABSORBERS

Direct acting, double action piston type front and rear

STEERING GEAR

Ross model HFB-70 with 23.3 to 1 ratio with integral power steering tilt and telescoping steering wheel

SUSPENSION

Ridewell air suspension system 15,000# front, 25000# drive; suspension utilizes 4 air springs, each

TIRES

Tubeless 12R 22.5 16-ply rating Michelin steel cord radial with XZA Thread, Single Front, Dual Rear

TRANSMISSION

ZF model 5 HP 500 Ecomat with integral retarder transmission calibration 2800 rpm

WHEELS

10 Stud disc, single front, dual rear - polished aluminum 22.5 x 8.25 rims

TRANSMISSION SPECIFICATIONS

TRANSMISSION

Type	ZF Automatic (5 HP 500)
No. Speeds	5 Forward - 1 Reverse
Ratios- First	3.43
Second	2.01
Third	1.42
Fourth	Direct
Fifth	0.83
Reverse	4.84

LUBRICANT CAPACITY

32 Quarts (including oil cooler)

BELLHOUSE SIZE

SAE #1 with adaptation to SAE #2

END YOKE

1710 Spicer

NUMERICAL ORDER

OPTION	OPTION DESCRIPTION	RESTRICTION	DISTRIBUTOR NET		
			WLWB	WBSA	WLSA

5615

LIGHTS, FLUORESCENT, DINETTE

This option includes (2) 2 12VDC fixtures mounted into the bottom of the dinette overhead cabinet. This option is in lieu of the standard 120 VAC fixture.

- - - 0

5631

SPARE PARTS KIT, ENGINE, 8V92

The spare parts kit, engine, 8v92 option includes additional belts, filters, hoses, racor element, transmission fluid, air compressor grease gun and water pump. These items are packed loose in the coach.

0 0 -

5649

DRAPES, ELECTRIC, BEDROOM & LIVING ROOM

Drapes are activated by a 120V motor, with power from generator, shoreline or inverter.

Momentary Switches for bedroom are located on the bedroom control panel.

Momentary Switches for living room are located on the underside of the overhead cabinets.

NOT AVAILABLE WITH OPTION 5913

S S S 0

5655

TOILET, MICROPHOR

This option includes a vitreous china toilet, ultra-low water use and 12VDC electric flush.

0 0 0 0

NOTE: RESTRICTIONS ARE NONE UNLESS OTHERWISE SPECIFIED.

NUMERICAL ORDER

OPTION	OPTION DESCRIPTION	RESTRICTION	DISTRIBUTOR NET		
			WLWB	WBSA	WLSL

5679

ZIP DEE PACKAGE

WLWB & WBSA
INCLUDES:

- (4) Chairs
- (2) Add a lounges
- Right hand living room awning
- Dinette awning (WLWB only, none on WBSA)

0 0 0 0

WLSL INCLUDES:

- (4) Chairs
- (2) Add a lounges
- Right side patio awning. Individual right hand awnings. Individual left hand awnings.
- Right hand living room awning

5680

INFINITY TABLE

This option provides an infinity table in lieu of the standard living room table. Table is a 2 tier table with wood border tops. Top is smoked glass with 12 VDC vista lighting. Inside of table includes mirrored back and sides with provisions for bottle storage. Front of table includes two smoked glass doors. Switch to light table is located on back side of table top.

0 0 0 0

5691

TIRE CHANGE KIT

The tire change kit includes a 12 ton hydraulic jack, jack handle, torque multiplying lug wrench and handle. These components are located in an outside storage compartment.

0 0 0 0

NOTE: RESTRICTIONS ARE NONE
UNLESS OTHERWISE SPECIFIED.

NUMERICAL ORDER

OPTION	OPTION DESCRIPTION	RESTRICTION	DISTRIBUTOR NET		
			WLWB	WBSA	WLSW

SPARE PARTS KIT, AIR SUSPENSION

0 0 0 0

WLSW

- (1) 1349182 Rear Air Spring
- (1) 0871376 Height Valve Control
- (1) 0962183 Air Filter
- (1) 1349042 Front Air Spring

WLWB AND WBSA

- (1) 1263581 Front Air Spring
- (1) 0961250 Rear Air Spring
- (1) 0871376 Height Valve Control
- (1) 0962183 Air Filter
- (1) 0990671 Tag Air Spring

SPARE PARTS KIT, ENGINE, CAT 3208

- - 0

This option includes additional belts, filters hoses, water pump, grease gun and cartridge, transmission fluid and oil.

BATTERY HEATER (FOR CHASSIS BATTERIES)

0 0 0 0

Battery heaters are installed on the 12 volt cranking batteries at rear of coach. Heaters are controlled by 120 VAC switch with indicator light. Switch location in kitchen base cabinet.

NOTE: RESTRICTIONS ARE NONE
UNLESS OTHERWISE SPECIFIED.

NUMERICAL ORDER

OPTION	OPTION DESCRIPTION	RESTRICTION	DISTRIBUTOR NET		
			WLWB	WBSA	WLSA
5773	<p><u>GARBAGE DISPOSAL</u> This option includes garbage disposal located under kitchen sink bowl. Requires 120V supplied from shoreline or generator.</p>		0	0	0
5812	<p><u>AIR COMPRESSOR, AUXILIARY</u> This option includes a 120 VAC compressor located in an outside compartment. 12V switch located on the lower dash panel operates the compressor via shoreline or generator power. The compressor provides a quick source of air for power tools or pressurizing the coach air system or tires without starting coach engine.</p>		0	0	0
5826	<p><u>FREEZER IN OUTSIDE COMPARTMENT, 50 LB.</u> A 50 lb capacity freezer mounted on a pull out tray is located in the roadside center storage compartment. The freezer operates on 120 VAC or 12 VDC.</p>		0	0	0
5828	<p><u>INTERIOR PROTECTION PACKAGE</u> This option includes: Carpet with bound edges installed loose on the dash, bathroom and a removable vinyl carpet cover. All items match coach interior decor.</p>		0	0	0

NOTE: RESTRICTIONS ARE NONE UNLESS OTHERWISE SPECIFIED.

NUMERICAL ORDER

OPTION	OPTION DESCRIPTION	RESTRICTION	DISTRIBUTOR NET		
			WLWB	WLSP	SWWB

5850

PREMIUM SOUND SYSTEM

Sound system features a compact disc player, graphic equalizer, and tuner cassette. Graphic equalizer features nine bands of equalization, three programmable memory presets, and three built in memory presets. Tuner cassette features direct access tuning, 30 channel preset memory, seek and manual tuning, Dolby B noise reduction, metal tape capability and loudness switch. Includes four full range coaxial speakers and 184 watts of power.

0 0 0 0

5851

SKYLIGHT W/SLIDING COVER

The skylight includes integral sliding cover.

0 0 0 0

5852

LEATHER PACKAGE

This option includes, dinette cushions and companion chairs covered in a leather to match the interior decor. The dinette seat base is covered in a matching vinyl.

0 0 0 0

5859

BEDROOM, TWIN BED

Refer to floor plan for bedroom arrangement.

0 - 0

5870

STATE CERTIFICATION, CALIFORNIA

This option includes in house inspection, filing of plans and compliance with state housing codes. An identification plate is installed immediately to the rear of the entrance door to satisfy state requirements and the installation of the state supplied operating decal. Option also includes special state construction and a listed L.P. gas leak detector. This option is required for all units sold to distributors in California.

0 0 0 0

NOTE: RESTRICTIONS ARE NONE UNLESS OTHERWISE SPECIFIED.

NUMERICAL ORDER

OPTION	OPTION DESCRIPTION	RESTRICTION	DISTRIBUTOR NET		
			WLWB	WBSA	WLSB
5874	<p><u>COUNTERTOP, CORIAN W/DBL MOULDED SINK</u> This option includes a 3/4" thick CORIAN counter top with a moulded double bowl sink. This option is in lieu of the standard CORIAN top with drop in sink.</p>	NOT AVAILABLE IN A WLSB	0	0	-
5888	<p><u>STATE SUPPLIED OPERATING DECAL, TENNESSEE, INSTALL</u> This option includes an identification decal installed immediately to the rear of the entrance door, below the door bell and handle. This option is required for units sold to distributors in Tennessee.</p>		0	0	0
5889	<p><u>PAINT DESIGN, MACH II</u> Five color paint design (includes base color). Colors can be customer selected or the color coordinated paint scheme can be selected.</p>		0	-	-
5893	<p><u>STATE SUPPLIED OPERATING DECAL, FLORIDA, INSTALL</u> This option includes an identification decal installed immediately to the rear of the entrance door, below the door bell and handle. This option required for units sold to distributors in Florida.</p>		0	0	0
5904	<p><u>PAINT ACCENT COLOR, NON STANDARD</u> This option should be specified if the customer desires paint colors different than the specified paint colors.</p>		0	0	0

NOTE: RESTRICTIONS ARE NONE UNLESS OTHERWISE SPECIFIED.

NUMERICAL ORDER

OPTION	OPTION DESCRIPTION	RESTRICTION	DISTRIBUTOR NET		
			WLWB	WBSA	WLSP

- | | | | | |
|------|---|---|---|---|
| 5905 | <p><u>PAINTE DESIGN, MACH I</u>
 Four color paint design (includes base color). Colors can be customer selected or the color coordinated paint scheme can be selected.</p> | 0 | - | 0 |
| 5906 | <p><u>PAINTE DESIGN, MACH III</u>
 Four color paint design (includes base color). Colors can be customer selected or the color coordinated paint scheme can be selected.</p> | 0 | - | 0 |
| 5912 | <p><u>INTERIOR PACKAGE FORMICA</u>
 Laminated and/or wallpaper walls, laminate cabinets with wood trim.</p> | 0 | 0 | 0 |
| 5913 | <p><u>DELETE LIVING ROOM OVERHEAD CABINETS</u>
 Fabric wrapped valances in living room in lieu of overhead cabinets.</p> | 0 | 0 | 0 |
| 5915 | <p><u>FLOOR PARQUET, WHITE OAK</u>
 White oak parquet flooring in kitchen and dinette area in lieu of carpet.</p> | S | S | 0 |

WLWB & WBSA ELECTRIC DRAPES BECOME MANUAL

NOTE: RESTRICTIONS ARE NONE UNLESS OTHERWISE SPECIFIED.

NUMERICAL ORDER

OPTION	OPTION DESCRIPTION	RESTRICTION	DISTRIBUTOR NET		
			WLWB	WLSP	SWWB

5916

DINETTE PACKAGE, L SHAPE

Three place dinette with a motorized retractable table for increased kitchen work space. Option includes:

- (1) Vista lights inside the ceiling fixture. Vista lights are wired to a separate switch.
- (2) Back lighted sand blasted design mirror in an oak frame mounted on the refrigerator wall behind the dinette. Lighted mirror is wired to the same switch as the vista lights inside the ceiling fixture. (WLWB ONLY)
- (4) Two radiused corner glass shelves with brass trim. Shelves are mounted in the corner above and behind the dinette. (WLWB ONLY)

0 0 0 -

5917

LUGGAGE RACK AND ACCESS LADDER

This option includes an aluminum roof luggage rack, access ladder and extruded aluminum roof tread. The luggage rack and ladder are painted the base color of the coach. The two piece ladder includes rubber tread to provide a non-slip surface and is mounted on the rear curbside of the coach.

0 0 0 0

5941

BEDROOM, CROSS ISLAND BED

54" x 76" double bed w/head of bed at left side of bedroom with aisle at foot and left and right sides of bed; night table at each side of bed; vanity cabinet above engine deck with 6 drawers below and double mirrored raised panel oak doors into closet area; TV cabinet and load center in right hand

0 S -

NOT AVAILABLE
INA WLSP

NOTE: RESTRICTIONS ARE NONE
UNLESS OTHERWISE SPECIFIED.

NUMERICAL ORDER

OPTION	OPTION DESCRIPTION	RESTRICTION	DISTRIBUTOR NET	
			WLWB	WSP
5943	<p><u>PRIVATE TOILET IN WALK THRU BATH</u> This option omits the upper portion of the kitchen pull out pantry. It also reduces the wardrobe closet by approximately 7 inches. (See floor plan).</p>	NOT AVAILABLE WITH OPTION 5989 NEW DIMENSION WALKTHRU BATH	0	-
5944	<p><u>DUCTED ROOF AIR CONDITIONING W/REMOTE THERMOSTAT</u> Includes two 13,500 BTU Emerson quiet cool roof air conditioner units with air ducted to side wire cover areas to a front to rear duct each side. Includes eleven closable registers - 4 in living room, 2 in kitchen area, 1 in bath, 4 in bedroom. Also includes 2 wall mounted mechanical thermostats.</p>		-	0
5947	<p><u>SHOWER IN LIEU OF TUB IN WALK THRU BATH</u> This option provides a lavatory cabinet and medicine cabinet approximately 13 inches longer. Available only with standard walk thru bath.</p>	NOT AVAILABLE WITH OPTION 5989 NEW DIMENSION WALKTHRU BATH	0	-
5949	<p><u>BATTERY HEATER (FOR ALL 12 VOLT BATTERIES)</u> 120 VAC battery heater pads are installed on all 12 VDC storage batteries, to provide greater battery capacity in cold weather conditions.</p>	NOT AVAILABLE WITH OPTION 5967	0	0
5950	<p><u>ELECTRIC DOOR LOCKS FOR LUGGAGE COMPARTMENTS</u> Includes 12VDC actuation from the dash or keyless entry system. Key operation overrides each individual door. This option is included on all luggage compartment doors.</p>		0	0
5951	<p><u>SEAT, CO-PILOT, 33" BUDDY W/POWER FOOTREST</u> This optional seat is a wider seat with power footrest and lumbar support. It has the same six way electric seat adjustment as the standard co-pilot seat and is color coordinated to match pilot seat. Driver's seat will also be villa w/lumbar support.</p>		0	0

NOTE: RESTRICTIONS ARE NONE UNLESS OTHERWISE SPECIFIED.

NUMERICAL ORDER

OPTION	OPTION DESCRIPTION	RESTRICTION	DISTRIBUTOR NET		
			WLWB	WBSA	WLSP

5952

BEDROOM PACKAGE, QUEEN CROSS

Refer to floor plan WLSP which includes:

- * 13" television built in the right hand overhead cabinet.
- * Vanity with drawers and a wood top.
- * Table with lift up wood top at foot of the bed
- * Indirect lighting in the overhead cabinets.

- - - 0

5955

EXTERIOR LIGHTING PACKAGE

On WLSP models includes the following:

- (1) Landing light on the both sides of the coach at the front and rear.
- (2) Additional porch light on the left hand side over the utility box.
- (3) Additional porch light on the right hand side
- (4) Twin spotlights

0 0 0 0

5963

BASE COLOR, PLATINUM

This platinum base color option is color coordinated for the palomino beige decor. NOTE: This option must be ordered before Blue Bird set up date.

AVAILABLE ONLY WITH OPTION 5988

0 0 0 0

NOTE: RESTRICTIONS ARE NONE UNLESS OTHERWISE SPECIFIED.

NUMERICAL ORDER

OPTION	OPTION DESCRIPTION	RESTRICTION	DISTRIBUTOR NET		
			WLWB	WLSP	SWWB

5958

SEAT, PILOT/CO-PILOT WITH LUMBAR SUPPORT

This option includes leather pilot and co-pilot seats with an electrically operated lumbar support. This allows the driver or co-pilot to adjust the seats lower back (lumbar) area to fit his or her lower back contour at the push of a button. In addition the seats have six way electric controls, which adjust seat bench tilt up/down and front/back as well as 360 degree swivel bases.

S S 0

5959

WASHER/DRYER COMBO. 120 V

The washer/dryer combo is mounted on a slide out tray located in the full height closet with an access panel on the shelf above washer/dryer. Shut off valves for hot and cold water are located behind the washer dryer. 120 VAC power is supplied by shoreline hook up or generator. A ground fault interrupter circuit breaker controls power to washer dryer.

0 - 0

AVAILABLE ONLY WITH OPTION 5989 NEW DIMENSION WALK THRU BATH AND WLSP WALK THRU BATH.

5960

MUSICAL HORN CONTROLS, REMOTE

This option features a control panel installed in the co-pilot's kick panel to permit the musical horns to be operated by the co-pilot.

0 0 0

5961

CUSTOMER SUPPLIED MATERIAL

This option should be specified if the coach will be built using either customer or dealer supplied materials.

0 0 0

NOTE: RESTRICTIONS ARE NONE UNLESS OTHERWISE SPECIFIED.

NUMERICAL ORDER

OPTION	OPTION DESCRIPTION	RESTRICTION	DISTRIBUTOR NET		
			WLWB	WBSA	WLSA

5962 **HEAT EXCHANGER, ENGINE FOR LPG HYDRONIC HEAT**
 This option accomplished the following:
 1. Allows interior of coach to be heated with engine heat while in transit without burning LPG.
 2. Assists standard RH side heat exchanger in preheating engine during cold weather by using LPG hydronic heat system.

5965 **BAY HEAT, LPG HYDRONIC**
 This option allows outside storage compartments (not holding tank) to be heated for freeze. Protection by the LPG hydronic heating system. It contains 2-10,000 BTU fan forced heat exchanges that are activated by a thermostatically controlled switch at approximately 40 degrees F.

5966 **MUD FLAP, FULL WIDTH, REAR**
 Includes full width rubber mud flap with trim.

5967 **BATTERIES, GELL CELL, MAINTENANCE FREE, (8) EIGHT**
 This option replaces the (4) four standard lead acid coach batteries with (8) eight gell cell maintenance free batteries. Option includes an additional roll out battery tray.

5968 **INTERIOR PACKAGE WALNUT**
 This option replaces all oak wood components with walnut wood finished in natural color.

- - - 0
 0 0 0 0
 0 0 0 0
 0 0 0 0

NOT AVAILABLE
ON WLSA

NOTE: RESTRICTIONS ARE NONE
UNLESS OTHERWISE SPECIFIED.

NUMERICAL ORDER

OPTION	OPTION DESCRIPTION	RESTRICTION	DISTRIBUTOR NET		
			WLWB	WBSA	WLSA
5971	<p><u>BASE COLOR, HEATHER METALLIC</u> This heather metallic base color is color coordinated for the rose quartz decor.</p>	AVAILABLE ONLY WITH OPTION 5983	0	0	0
5972	<p><u>BASE COLOR, ICE BLUE METALLIC</u> This ice blue metallic base color is color coordinated for the summer sky decor.</p>	AVAILABLE ONLY WITH OPTION 5986	0	0	0
5973	<p><u>BASE COLOR, LIGHT JADESTONE METALLIC</u> This light jadestone metallic base color is color coordinated for the spruce decor.</p>	AVAILABLE ONLY WITH OPTION 5984	0	0	0
5974	<p><u>PAINT DESIGN, MACH IV</u> Four color paint design (includes base color). Colors can be customer selected or the color coordinated paint scheme can be selected.</p>		0	0	0
5975	<p><u>PAINT DESIGN, MACH V</u> Five color paint design F(includes base color). Colors can be customer selected or the color coordinated paint scheme can be selected.</p>	AVAILABLE ONLY WITH WBSA	-	0	-
5976	<p><u>ELECTRIC IMMERSION HEAT, HYDRONIC SYSTEM</u> This is an accessory to the LPG Hydronic heat system. It's primary use is to serve as a low requirement heat source. It is NOT intended to heat the coach in extreme cold conditions. In these conditions LPG must be the source of energy.</p>		0	0	0

NOTE: RESTRICTIONS ARE NONE UNLESS OTHERWISE SPECIFIED.

NUMERICAL ORDER

OPTION	OPTION DESCRIPTION	RESTRICTION	DISTRIBUTOR NET		
			WLWB	WLSP	SWWB
5977	<p><u>INTERIOR PACKAGE, MAHOGANY</u> This option replaces all oak wood components with Mahogany wood finished in a 50/50 mix of red mahogany stain and 3812 thinner.</p>		0	0	0
5978	<p><u>SOFA, CURVED</u> Consists of a cushioned "L" extension on sofa.</p>		0	S	-
5979	<p><u>DINETTE TABLE AND CHAIRS</u> CORIAN table with wood bull nosing mounted with canter lever leg and 2 chairs. This option will be in lieu of the bench (booth) type dinette. Security safe relocated to wardrobe closet.</p>		0	0	0
5980	<p><u>MIRRORS, REAR VIEW, BRIGHT POLISHED</u> Includes the right and left outside mirrors bright polished.</p>		0	0	0
5983	<p><u>DECOR, INTERIOR/EXTERIOR, ROSE QUARTZ</u> Refer to color board for material samples. Option includes a two accent color paint design on an Indian Silver Base (A). Paint colors: Light Accent (B) Light Bordeaux; Dark Accent (C) Dark Bordeaux.</p>		0	0	0

NOTE: RESTRICTIONS ARE NONE UNLESS OTHERWISE SPECIFIED.

NUMERICAL ORDER

OPTION	OPTION DESCRIPTION	RESTRICTION	DISTRIBUTOR NET		
			WLWB	WBSA	WLSP

5984 **DECOR, INTERIOR/EXTERIOR, SPRUCE** 0 0 0 0

Refer to color board for material samples. Option includes a two accent color paint design. Paint Colors: Light Accent (B) Medium Lagoon; Dark Accent (C) Dark Lagoon.

5985 **DECOR, INTERIOR/EXTERIOR, SILVER SHADOW** 0 0 0 0

Refer to color board for material samples. Option includes a two accent paint design, on an Indian Silver Base (A).
Paint Colors: Light Accent (B) Cumulus Gray; Dark Accent (C) Slate Gray.

5986 **DECOR, INTERIOR/EXTERIOR, SUMMER SKY** 0 0 0 0

Refer to color board for material samples. Option includes a two accent color paint design on an Indian Silver base (A). Paint colors: Light Accent (B) Light Atlantic; Dark Accent (C) Dark Bermuda.

5988 **DECOR, INTERIOR/EXTERIOR, PALOMINO BEIGE** 0 0 0 0

Refer to color boards for material samples. Option includes a two accent color paint design on a Platinum Base (A). Paint colors: Light Accent (B) Light Fawn; Dark Accent (C) Mocha. This option must be ordered before BlueBird set up date or the exterior paint colors will reflect summer exterior colors

NOTE: RESTRICTIONS ARE NONE UNLESS OTHERWISE SPECIFIED.

NUMERICAL ORDER

OPTION	OPTION DESCRIPTION	RESTRICTION	DISTRIBUTOR NET		
			WLWB	WBSA	WLSP

5989

NEW DIMENSION WALK THRU BATH

Refer to floor plan for bathroom arrangement.

0 - -

5991

WIRING, CELLULAR PHONE WITH ANTENNA

An antenna and wiring is supplied for the customer to hook up a cellular phone. The antenna is roof mounted. Wiring terminates in the driver's area.

S S 0

5993

BATTERIES, GELL CELL, MAINTENANCE FREE, (4) FOUR (WLSP)

This option replaces the (4) standard lead acid coach batteries with (4) gell cell maintenance free batteries.

- - 0

6015

KEYLESS ENTRY SYSTEM (WLSP)

A key pad is located adjacent to the entrance door. By entering a pre-set code the entrance door dead bolt lock is unlocked.

S S 0

NOTE: RESTRICTIONS ARE NONE UNLESS OTHERWISE SPECIFIED.

NUMERICAL ORDER

OPTION	OPTION DESCRIPTION	RESTRICTION	DISTRIBUTOR NET		
			WLWB	WBSA	WLSP

6017

LIGHTS, DRIVING

Driving lights mounted in lieu of fog lights, in front bumper.

0 0 0 0

NOTE: RESTRICTIONS ARE NONE
UNLESS OTHERWISE SPECIFIED.

COVER PAGE

GENERAL STATEMENT ABOUT INTERIORS

Interior's will be stained oak wood which will consist of the following items.

Walls will be wood or wallpaper cabinet's will be wood (with the exception of the living room over head cabinets which will be wrapped in vinyl). All table tops will be wood with the exception of the kitchen countertop and dinette top.

FIXTURES

All fixtures (receptacle plates) will be ivory.

With the optional walnut and mahogany woods all fixtures (receptacles plates) will be brown when mounted in wood surfaces.

All light fixtures, bath accessories will be brass in all interiors and optional woods.

BATHROOM

CERAMIC TILE, BATHROOM FLOOR

Ceramic tile is installed on the floor and around the exterior of the bath tub. Refer to color board for material color.

FANTASTIC FAN

Remote switch, painted wood frame, sliding cover

LIGHTING (WLWB)

Opera light, 120 VAC (A four (4) bulb fixture installed over the medicine cabinet.)
Valance lighting (A 12 VDC fixture built into the valance over the toilet.)

LIGHTING (WLSP)

Opera light, 120 VAC (A four (4) bulb fixture installed over the medicine cabinet)
Cabinet lighting (A 12 VDC fixture built into the medicine cabinet over the toilet.)

LIGHTING (WBSA)

Opera light, 120 VAC (a Three (3) bulb fixture installed over the medicine cabinet).

MEDICINE CABINET (WLSP) WITH:

Two (2) doors, w/clear mirrors
Two (2) adjustable shelves with anti-tip lips.
Air conditioning outlet.
120 VAC GFI receptacle below

MEDICINE CABINET (WLWB) WITH:

Two (2) doors, w/mirror
Two (2) adjustable shelves with anti-tip lips.
Air conditioning outlet.
One (1) 12 VDC bullet light

MEDICINE CABINET (WBSA):

One (1) door w/mirror insert
One (1) adjustable shelf w/anti-tip lip
One (1) 12V bullet light
120 VAC GFI receptacle below

MISCELLANEOUS (WLSP):

Recessed toilet tissue holder
Robe hook
Towel bar
Towel ring

MISCELLANEOUS (WLWB & WBSA):

Recessed toilet tissue holder
Towel bar on bathroom door (Not available WBSA)
Robe hook on bathroom wall
Towel bar adjacent to medicine cabinet

SHOWER STALL (WLSP & WBSA) WITH:

Personal shower wand
Single handle control
Towel Bar
Shower diverter valve
* Fiberglass unit with non-skid bottom
Soap dish
Travel latch on glass door
Tub enclosure (safety glass)
12 VDC light fixture in ceiling

* NOTE: Gelcoat color coordinated to interior.

TOILET SEALAND

Color coordinated to interior
(2) rolls of dissolvable toilet tissue are provided, along w/toilet chemical

TUB/SHOWER UNIT (WLWB) WITH:

- Stationary shower head
- Personal shower wand
- Double handle control
- Towel Bar
- Shower diverter valve
- * Fiberglass tub with non-skid bottom
- Molded soap dish
- Storage for bath amenities
- Travel latch on glass door
- * Fiberglass tub surround
- Glass tub enclosure (clear safety glass)

* NOTE: Gelcoat color coordinated to interior.

VANITY (WLSP & WBSA) WITH:

- Cultured marble top.
- Single lever control.
- One (1) raised panel door.

VANITY (WLWB) WITH:

- Cultured marble top.
- Single handle control.
- One(1) drawer and two (2) doors.
- 120 VAC GFI receptacle.

WARDROBE CLOSET (WLSP)

- Two (2) mirrored sliding doors
- Hanging Rod
- Two (2) 12 VDC light fixtures
- Gray carpeted interior

WARDROBE CLOSET (WLWB)

- Two (2) mirrored sliding doors
- Four (4) storage drawers behind doors
- Hanging Rod
- Two (2) 12VDC light fixtures
- Gray carpeted interior

DRAWER CABINET (WBSA)

5 Drawers w/storage above behind

Two (2) wood framed mirrored doors

1-120 VAC electric heater below w/separate thermostat

BEDROOM

BEDROOM ARRANGEMENT, STANDARD

Innerspring Mattress-(WLWB 60 x 80), (WLSP 60 x 76), (WBSA 54 x 76); two (2) foam pillows; quilted bedspread with reverse matching pillow sham; upper light valance, fabric covered to match bedspread.

BEDROOM CONTROL PANEL (WLWB & WBSA)

1. Generator Start/Stop Switch
2. Light switch to control the aisle lights.
3. Security switch controls entrance door electric dead blot lock and landing lights for exterior lighting
4. Alarm clock
5. Electric drapes
6. LPG hydronic heat control
7. 12 VDC stereo tuner/cassette

BEDROOM CONTROL PANEL (WLSP)

1. Generator Start/Stop Switch
2. Light switch to control the aisle lights and the left and right side reading lights.
3. Security switch controls entrance door electric dead bolt lock and landing lights for exterior lighting
4. Alarm clock
5. Optional electric drapes

INDIRECT FLUORESCENT LIGHTING, BEDROOM

WLWB

Upper 120 VAC lights in side valances. The lights are controlled by a switch on the bedroom wall.

WBSA

Upper 120 VAC lights in side valance (curb side). The lights are controlled by switch on the aisle wardrobe wall. Road side overhead cabinet to have two (2) 12 VDC spotters and (1) 12 VDC fluorescent light.

WLSP

Upper 120 VAC lights in side valances controlled by switch on the bedroom wall. 2-12 VDC spotters under cabinet over bed.

DAVENPORT STORAGE BEHIND BED (WLSP)

Wood center overhead cabinet with gray carpeted interior. Clear mirror extending from the bed to the bottom of the storage compartment and width of bed. Mirror is framed with oak trim on sides only.

DAVENPORT STORAGE BEHIND BED (WLWB)

Full length hanging rod; interior covered with gray carpet; 12 VDC light fixtures in ceiling; (4) clear sliding mirrored door with wood strip on edge of mirror, with finger pulls.

DAVENPORT STORAGE (WBSA)

Vanity cabinet above engine deck with 6 drawers below and double mirrored raised panel oak doors into closet area; TV cabinet and load center in right hand corner and storage cabinet in left hand corner.

NIGHT TABLES (WLSP)

Stained oak wood with wood top, stereo and primus control installed in the curbside table, and roadside table includes one (1) drawer.

NIGHT TABLES (WLWB)

Stained oak wood w/wood tops. Each table to have (1) one drawer.

NIGHT TABLES (WBSA)

Stained oak wood w/wood tops. Rear table to have one (1) drawer. Front table to have one wood raised panel door.

STORAGE AREA (WLSP)

The storage area under the bed includes two (2) pull out drawers.

13" COLOR TELEVISION

The 13" color television is built in and includes a remote control, cable ready capability.

WINDOWS

Bedroom windows are horizontal double sliding windows. 6% light transmission tinted, laminated glass.

CHASSIS

AIR BRAKE SYSTEM

The motor home is equipped with dual service air brake systems for front, rear and tag axle brakes, (WBSA & WLWB) with integral fail/safe operation; and manual/automatic rear spring (parking) brakes. The service brakes are completely independent systems, each including a reservoir and separate distribution lines and valves. The reservoirs are pressurized from a single compressor. Both service brake systems are brought into operation each time the brake treadle is depressed to slow or stop the coach. Reservoir pressure for each service brake system is monitored by a respective pressure gauge on the front panel; system failure(s) are indicated by low pressure readings, illumination of the low air failure lamp and sounding of buzzer.

To compensate for normal lining wear, each brake system is individually self-adjusting.

Protection against brake system failures is provided by fail/safe features. IF the front brakes fail, operating the brake treadle still activates the rear service brakes to provide stopping capability.

If a failure occurs in the rear, the front service brakes and rear spring brakes provide braking action.

In the unlikely event of a failure where both service braking systems are disabled, the rear spring brakes will apply automatically and bring the vehicle to a stop.

AIR DRYER, COMPRESSED AIR SYSTEM

The air dryer unit collects and removes moisture and contaminants from the compressor air output before the air reaches the reservoirs. This unit is different from a reservoir drain or an after cooler in that it provides dry air for the brake system by eliminating the possible accumulation of condensate in the system reservoirs. Note that each reservoir also has a drain cock on the bottom for draining accumulated moisture. This assures a long maintenance free life for air brake system components due to the removal of system contaminants.

AIR SCHRADER VALVE

An air connection is provided in the engine compartment to allow the air system to be pressurized from a "shop" source without the necessity of starting the engine.

AIR SUSPENSION

The motor home is equipped with air suspension bags which cushion the front, rear and tag axles (WBSA & WLWB). Dumping these air bags when the vehicle is parked allows the rubber bumpers to come together and eliminate vehicle springiness. Switches in the driver's area control dumping and filling of the respective air bags.

A light in the driver's area illuminates to warn the driver that the system is dumped and not to drive the vehicle until the suspension is inflated.

CRUISE CONTROL, AIR OPERATED (WLSP)

A driver controlled, automatic speed control which is air operated and designed for use by heavy duty highway vehicles. Controls (On/off, Set/Resume) are mounted on the dash in easy reach of the driver. Cruise control also serves as a chassis engine "High Idle" provided the transmission is in neutral and spring brake valve is in park position.

CRUISE CONTROL, INTEGRAL W/DDECII (WLWB & WBSA)

A driver controlled automatic speed control which is integral with the Detroit Diesel DDECII engine control. Controls are located on the shifter panel.

DIESEL FUEL, 100 GALLONS FOR DELIVERY

100 gallons of diesel fuel is installed in Fort Valley.

EMERGENCY WARNING TRIANGLE KIT

The kit included (3) fold out, reflective, red triangles in a plastic case with instructions for use.

ENGINE, CAT 3208 TZ 300 HP

(See WLSP Chassis specs section.)

ENGINE, DETROIT DIESEL 8V92 THE DDECII

(See WLWB chassis specs section.)

ENGINE STARTING REMOTE

A separate key switch is located in the engine compartment to allow the engine to be started remotely. The switch is housed in a weather proof box.

FIRE ALARM, AUTOMATIC, ENGINE COMPARTMENT

This feature alerts the pilot of excessive temperatures in the engine compartment via sensors in the engine compartment and a visual and audible warning in the pilot's area.

FUEL FILTER, AND WATER SEPARATOR, RACOR

A racor fuel filter water separator/preheater is incorporated in the diesel fuel supply line and processes the fuel supply for maximum purity. The fuel filter also includes a built-in preheater which operates thermostatically from the 12 volt battery supply when the ignition is on. A water sensor lights the dash indicator when the water level in the filter bowl is high enough to require drainage.

With diesel generators, the diesel fuel for the generator also goes through the racor filter with check valves to protect each engine from drawing air.

The racor gauge shows the condition of the racor filter in terms of fuel line vacuum. High vacuum readings indicate when the filter element requires changing. This gauge is located in the driver's overhead dash.

FUEL TANK, 200 GALLONS (WLSP)

The diesel fuel tank is located between chassis frame rails in the midsection of the coach. A "Low Fuel" level indicator and a contamination indicator are located in the pilot's area.

FUEL TANK, 300 GALLONS (WBSA & WLWB)

The diesel fuel tank is located between chassis frame rails in the midsection of the coach. A "Low Fuel" level indicator and a contamination indicator included in the pilot's area. Dual fuel fill one each side of body.

GENERATOR, 15KW, DIESEL POWERED (WBSA & WLWB)

The generator is driven by a 4 cylinder water cooled diesel engine and is located in a sound proof compartment between the chassis frame rails at the front of the coach. The engine/generator set is mounted on a roll out carriage using spring type vibration isolators with a telescoping exhaust system. The carriage is powered in and out of the compartment for service by a 12 volt electro-mechanical linear actuator. Operation of the generator may be controlled from one outside or three inside remote locations.

1. From driver's area
2. From kitchen galley panel
3. From bedroom control panel

Remote gauges are included on the over head dash to monitor the generator operation.

GENERATOR, 8KW, DIESEL POWERED (WLSP)

The generator is water cooled and located on a powered slide out tray in the front of the vehicle. Generator can be operated from the driver's area, the galley panel, the remote panel located in the generator compartment or the bedroom control panel.

Remote gauges are provided on the co-pilot's overhead dash panel to monitor generator operation.

HEATER, ENGINE BLOCK

A 120 volt element that heats water in the engine block. On-Off operation is controlled by a switch located in the kitchen base cabinet.

HITCH, TRAILER, RECEIVER TYPE

5,000 lbs towing capacity and 500 lbs torque weight capacity receiver type hitch with chrome hitch receptacle cover to be used when hitch drawer is stored away.

HITCH, TRAILER DRAWBAR

Removable receiver type draw bar with 2" diameter chrome hitch ball. The 2" ball provided is rated at 2,000 lbs larger capacity draw bars must be owner supplied.

HOOKS, TOW

Two tow hooks are located at the front of the coach.

MUD FLAPS

Individual rubber mud flaps with Blue Bird logo, are installed at the rear of the front and rear tires.

QUICK START AID

A remote switch on the dash operates the ether injection system to aid engine starting in cold weather.

RETARDER

A transmission retarder is provided to assist in slowing and stopping the coach, thus extending the life of the service brakes. Retarder controls are located in the pilot's area.

TIRES, 12.00 X 22.50 ON FORGED ALUMINUM WHEELS

(See chassis specs sections.)

TRAILER PLUG

The female receptacle is installed in the rear of the coach and wired into the electrical system. The male portion is supplied loose in coach for installation by owner on towed vehicle.

WHEEL SAVER

A plastic wheel saver is located in an outside compartment. This disc is to be used when removing or torquing lug nuts on wheels.

ELECTRICAL

A/T SWITCH

The A/T switch on the upper dash controls all 12V circuits except the digital clocks, monitoring panel and burglar alarm. This switch allows power to be shut off to all 12V circuits except as noted to conserve battery. This switch also serves as an anti-theft feature.

ALTERNATORS, DUAL 130 AMP (WBSA & WLWB)

Unit is equipped with (2) 12 volt negative ground 130 amp alternators. An alt/chgr. amp gauge located on the upper dash shows output current of alternator 1 or 2 or the sum of alternators 1 and 2 depending on the position of the alt. amps switch. When parked with a source of 120 VAC, gauge shows total output of the battery charger. An alt. amps switch on the lower dash selects the display mode of the alt/chr. amps gauge. An indicator lamp next to switch indicates if a faulty condition occurs with either alternator.

ALTERNATOR, 160 AMP (WLSP)

Unit is equipped with (1) 12 volt negative ground 160 amp alternator. An ALT CHGR. amp gauge (located on the upper dash) shows output current of the alternator. When parked with a source of 120 VAC, gauge shows total output of the battery charger.

ANTENNA, TV, POWER

The TV antenna is roof mounted and remotely rotated by controls located in the overhead cabinet above the companion chair. An in line antenna signal amplifier is operated on 12 volts. The antenna includes a raising/lowering feature with 12 volt electric switches located on the pilot's overhead dash and in the bedroom. These switches are wired parallel. An audible and visual warning on the left hand over head dash panel is provided when the antenna is not retracted and the ignition key is turned on.

An A-B switch to select antenna or cable reception is located in the right hand front over head storage compartment for WBSA & WLWB and in the over head storage compartment above companion chair on the WLSP.

BATTERIES, CHASSIS, 12 VOLT MAINTENANCE FREE

Two 12 volt 925 CCA maintenance free batteries wired parallel produce power for starting the coach engine. Three of these batteries are supplied for the WBSA & WLWB.

BATTERIES, COACH (4) 12 VOLT

Four 12 volt, deep cycle batteries are provided. Batteries are located in the road side front compartment on WLSP and in the curb side rear compartment on the WBSA & WLWB. Batteries are wired parallel to produce 12 volt power. These batteries supply power for the coach interior and are used for generator starting. The batteries are mounted on a roll out tray.

BATTERY CHARGERS, (2) 45 AMP

Two 45 ampere battery chargers automatically operate whenever a source of 120 volts AC is supplied to the coach circuits. These chargers also charge the engine battery whenever there is a source of 120 volts AC.

A high/low amperage switch located in the utility compartment charges the batteries as follows. The high position gives 90 amps of charge. The low position gives 45 amps of charge.

BURGLAR ALARM SYSTEM

An intruder alarm system protects windows, luggage doors and entry door. Windows are activated by a magnetic proximity switch. Entry door uses a door jamb switch. System is enabled with a small key chain wireless transmitter.

CABLE CONNECTION & CABLE FOR CABLE TV HOOKUP

The utility compartment includes a connection for cable tv hookup and a 25' coax cable.

CHIME, DOOR

A multi tune electronic door chime, which can be preset, is provided on WBSA & WLWB models. On the WLSP the chime is bi-tone only. A button is provided on the outside of the coach adjacent to the entrance door for operation.

ELECTRONIC MASTER SWITCH

An electronic master switch is located in a living room over head cabinet. This switch allows the 12 VDC circuits in the coach, which are not controlled by the A/T switch, to be disabled thus avoiding draining the batteries when the coach is not in use.

FREEZER, WIRING ONLY FOR

12 VDC/120 VAC receptacles are located in the curb side center storage compartment.

HEATER, WATER, WITH HEAT EXCHANGER

The water heater is a fiberglass jacketed coil type heat exchanger which insures a continuous supply of hot water through heat exchanger action with the LP boiler coolant system and auxiliary pump when in transit. When the LP heat system is off, the electric heater will heat water when 120 volts is provided from the shoreline or the generator. Water heater capacity is 10 gallons. A water heater switch is located in the kitchen base cabinet.

INVERTER, 1500 WATT (WLSP)

Operates the following items while in transit: front overhead television, one kitchen receptacle, ice maker, bedroom television, and electric drapes. The inverter control panel is located in the driver's area.

INVERTER, 2000 WATT (WBSA & WLWB)

An inverter is located in the right hand rear compartment. The inverter will power all accessible outlets in the coach as well as the ice maker, televisions, microwave oven, and opera lights as long as the power demand is below 2000 watts. The remote panel for control and status of the inverter is located below the shifter panel.

KOOLOMATIC FAN

The fan is a 12 VDC power ventilator located in the kitchen. The fan is thermostatically controlled by the area thermostat located in the kitchen. Includes a wood frame painted to match the ceiling vinyl and a sliding cover.

LOAD CENTER

The load center has 100 amp capacity @ 240 VAC.

On WLWB and WBSA models the load center is located on the curb side in the Davenport area.

On WLSP models the load center is located in the kitchen base cabinet.

MONITORS, POWER LINE, 120 VAC

A dual power line monitor is located on the right hand overhead dash panel, to monitor the voltage in both legs of the ac shoreline supply (or generator supply). The monitors have a polarity and ground detector circuit to indicate possible electrical hazards due to incorrect hookups.

An additional power line polarity monitor is located in the shoreline/utility box.

OUTLETS, LAND LINE PHONE

Two outlets are provided and are wired to the female plug in the utility compartment. Outlets are behind the sofa and on the bedroom wall adjacent to the road side night table.

POWER CORDS

Approved power cords supply the coach for hookup to external power sources. Each cord has a ground pin which provides proper electrical system grounding. Divided storage for power cords is provided in an outside compartment.

<u>QTY</u>	<u>FEMALE/MALE</u>	<u>VOLTS</u>	<u>LENGTH</u>
1	50A/30A	120	1.5 FT.
1	30A TWISTLOCK/30A	120	25 FT.
2	30A/20A	ADAPTER	NA
1	50 AMP	220	25 FT. FIXED
2	30 AMP/30 AMP EXT	120	25 FT.

In addition to the fixed 50 amp power cord, the coach also includes a 30 amp service hookup.

SPLIT BATTERY POWER SYSTEM

Two separate battery systems are provided:

1. Coach Battery System
2. Chassis Battery System

Coach battery system supplies all 12V power for all interior items and exterior lighting as well as generator cranking. The chassis battery system provides power for engine cranking and ignition. The two systems are tied together only by the AUX battery switch on the lower dash and when the alternator is charging.

SPOTLIGHTS (WLWB & WBSA) OPTIONAL ON WLSP

One remote control high intensity spotlight is installed on the roof. It produces 10,000 BCP (Beam Candle Power) and can be positioned horizontally or vertically or used for spot or flood lighting. Controls are located on the overhead dash.

STEREO SYSTEM, BEDROOM

Stereo system featuring a tuner cassette sound system; tuner cassette features direct access tuning, 30 channel preset memory, seek and manual tuning, Dolby B noise reduction, metal tape capability and loudness switch, includes two full range coaxial speakers and 20 watts of power.

WIRING, CELLULAR PHONE WITH ANTENNA (OPTIONAL ON WLSP)

An antenna and wiring is supplied for the customer to hook up a cellular phone. The antenna is roof mounted. Wiring terminates in the driver's area.

EXTERIOR

AIR OUTLET AUXILIARY

An auxiliary air outlet from the chassis accessory air tank is located in an exterior storage compartment. An air hose and gauge is included.

AWNING, INDIVIDUAL BEDROOM, CURB SIDE

Awning is color coordinated to complement the exterior paint design.

AWNING, PATIO CURB SIDE

The patio curbside awning is color coordinated to complement the exterior paint design. The awning extends over the dinette window.

AWNINGS, INDIVIDUAL, ROAD SIDE

Awnings over the following windows are color coordinated to complement the exterior paint design: Bedroom window, kitchen window, & living room window

AWNING HOOK

Awning hook is supplied to release the latches on the awnings when unrolling.

BASE COLOR, INDIAN SILVER

Indian silver is the standard base color. (See paint charts for optional base colors).

BUMPERS, HIGH STRENGTH ALUMINUM WITH ABS COVER

Bumpers are made of structural aluminum with high impact ABS facade, painted to match paint design.

FENDERS, FIBERGLASS PAINTED

The fenders are painted to match the accent colors on the coach.

GRILL, LPG, PORTABLE

The portable freestanding LP grill stores in an exterior storage compartment. Quick disconnect supply lines, cutoff valve, and LP gas accessory line is included. Grill is fueled from the coach LPG system.

HANDLE, ASSISTANCE ENTRANCE DOOR

The entry door assist handle is located on the exterior of the coach to the left of the entry door. The assist handle on the WLSP is a clear acrylic handle which is lighted when the RH porch lights are on. The assist handle on the WLWB and WBSA is clear acrylic but is not lighted. Assist handles are also located on the interior of the coach on each side of the step well on the WLWB and WBSA. One interior assist handle is installed on the WLSP on the left side of the step well as you enter the coach.

HORNS, AIR

Dual horns with covers are roof mounted, one on each side of the coach. Horns are activated by a foot switch in the driver floor board or by the horn button.

KEYLESS ENTRY SYSTEM (WLWB & WBSA) OPTIONAL ON WLSP

A keypad is located adjacent to the entrance door. By entering a preset code the entrance door dead bolt lock is unlocked. This keyless entry system will also unlock the optional electric locks on the luggage compartment doors.

LIGHTS, LANDING, LEFT AND RIGHT SIDE (WLWB & WBSA) OPTIONAL ON WLSP

The 12 VDC recess mounted lights are located at the front and rear of the coach on both sides. Switches are located on the lower dash.

LIGHT, PORCH, RH SIDE

An amber, double bulb fluorescent light is located high and to the rear of the entry door. The light is operated from a switch on the entrance door control panel.

LIGHTS, FOG

Clear fog lamps are mounted stationary in the center section of the front bumper. They illuminate only on low beam.

LIGHTS, PARKING, REAR

These lights operate when the switch located on the lower dash, is activated and vehicle is in reverse gear.

LUGGAGE COMPARTMENTS

The luggage compartments are lined with gray carpeting on floors and vertical walls. Luggage compartments include lights which are activated by the individual door switches. The doors are parallelogram type and are gas spring operated, on WLWB and WBSA. The doors on WLSP are top hinge type with gas spring operation.

MIRRORS, REAR VIEW, REMOTE CONTROLLED & HEATED

Exterior rear view mirrors are heated and remote controlled. Mirrors are non glare with cast aluminum heads and arms and an integral convex rear view mirror. The convex mirrors operate from controls located in the driver's area. A mirror heat switch is located on the lower dash panel.

PAINT DESIGN, THREE ACCENT COLOR (WBSA)

The standard paint design for the WBSA model is a three accent color design on an indian silver base. When the customer selects an optional interior decor, a color coordinated exterior paint scheme is included.

PAINT DESIGN, TWO ACCENT

The standard paint design is a two accent color design on an indian silver base. When the customer selects an optional interior decor, a color coordinated exterior paint scheme is included.

SEWER HOSE

A hose is provided for drainage of the gray and waste water tanks. The sewer hose is stored in a tube underneath the coach accessible from the roadside.

STEP, ENTRANCE DOOR, AIR OPERATED

The air operated entrance door step extends when the door is open and retracts when the door is closed. A rubber covering is over the bottom entrance step; the second and third steps are carpeted. A switch is provided on the lower dash and on the co-pilot's panel which allows the step to remain in the extended position. A light is located adjacent to the switch to alert the driver that the step is extended.

TOOLBOX

The tool box is a 6 drawer type mounted on a slide out tray in an exterior storage compartment. Tools are not included.

WATER FAUCET, EXTERIOR

An exterior water faucet is located in the road side holding tank compartment on WLWB and WBSA. On WLSP models the faucet is located in the curbside rear compartment.

WATER HOOK UP, COMMERCIAL

The water supply system is dual purpose and has a commercial water inlet connection that is located on the outside of the coach on the roadside rear. Commercial water hookup can be used to supply all coach water system requirements in the campsite. Coach includes a quick disconnect for hooking up to commercial water.

WATER HOSE

A 25 ft. water hose is placed loose in an outside compartment.

WINDSHIELD WIPERS

Dual 2-speed electric intermittent wipers with non glare arms and blades. Wiper arms are 26" parallelograms with 24" blades. Wipers have a delay position with the delay control on the lower dash. A washer fluid reservoir is located in the road side front compartment.

GENERAL INTERIOR

CARPET

Carpet is standard for all areas of the coach except the bathroom, and kitchen (WLWB & WBSA). Refer to color board for material samples. In addition loose carpet mats are included to be used on the steps in the step well.

DRAPES, ELECTRIC (WLWB & WBSA) OPTIONAL WLSP

The living room drapes are operated from switches located in the bottom of the left hand and right hand living room cabinets. Drapes are operable from a 120 VAC source (shoreline, generator or inverter). Bedroom drapes are operated from switches on the bedroom panel.

DRAPES, MANUAL (WLSP)

Manual operation is accomplished by drawstrings.

FIRE EXTINGUISHER

Two halon type extinguishers with a gauge are provided. One is located in the living area on the coach and another is located in an exterior compartment.

HEADLINER, ROLLED AND PLEATED

Consists of individually wrapped panels 16" wide attached to ceiling substrate with panel clips. Each panel is wrapped with vinyl with 1/4" thick polyether foam. These panels are removable for replacement or repair. These panels will be in the ceiling of the living area only. Ceilings of closets, cabinets, etc. will have carpet type ceiling glued in place.

INTERIOR PACKAGE, OAK

Stained oak will be the standard wood. All interior walls will be wood and/or wallpaper. All cabinets will be wood except living room, over head cabinets will be vinyl wrapped.

LPG LEAK DETECTOR SYSTEM

The gas leakage detector, sounds an alarm and closes down the main LPG supply in the event of an LPG leak.

SCREENS WINDOW

Sliding screens to cover any sliding window section on all 6% translucent windows.

SMOKE DETECTOR

A smoke detector is installed in the ceiling.

VACUUM CLEANER, ROLL-A-BOUT

A portable roll-a-bout vacuum cleaner with a flexible hose and wand, carpet upholstery, and crevice attachments are placed loose in closet.

WINDOW TRIM

Oak window trim is installed on all windows in the coach.

WINDOWS

SIDE

Horizontal single sliding, aluminum sash with spring loaded latches. 6% light transmission tinted, laminated glass in all side windows.

WLSP ENTRANCE

Stationary glass with latch, 6% light transmission tinted, laminated glass.

DRIVER & COMPANION

Horizontal double sliding, aluminum sash, with spring loaded latches and 70% light transmission tinted laminated glass.

HEATING & AIR CONDITIONING

AIR CONDITIONER, AUTOMOTIVE, 18,000 BTU

The air conditioner is an 18,000 BTU chassis engine driven unit. Temperature control and dual three speed blower controls are located on the pilot's over head dash panel. This system provides air conditioning for the pilot and co-pilot's are only. Four adjustable louvers are provided in the over head panel. Two outlets aimed toward windshield for defogging.

AIR CONDITIONER, CONDENSATE DRAIN

Separate drain lines are provided for each air conditioning unit to route condensate from the roof to the ground through the body side walls.

AIR CONDITIONERS, 13,500 BTU, ROOF MOUNTED (WLSP)

Air conditioners are located in the living room and bedroom. Fan and thermostat controls are located on the roof air conditioners. Each air conditioner is equipped with a 1000 watt heat strip. AC/heat master switches are provided to allow the air conditioners to be started or stopped from the driver's area. The air conditioners are operable from 120 VAC source (generator or shoreline power).

DUCTED ROOF AIR CONDITIONER, W/REMOTE THERMOSTAT (WLWB & WBSA)

Air conditioners and wall mounted thermostats are in the following areas: driver's area, living room and bedroom.

AC/heat master switches are provided which allow the units to be started or stopped for the driver's area. The air conditioners are operable from 120 VAC source (generator or shoreline power).

FREEZE PROTECTION

The WLSP includes (1) 900 watt heat blanket under the water tank.

Thermostatically controlled heat tapes (120 VAC) are run on the water tubing and then wrapped with insulation. Heat tapes start to heat at 36 degrees F and stop 43 degrees F. This freeze protection will greatly decrease the chances of frozen water lines provided the coach is plugged into outside power or the generator is run continuously during cold weather periods.

HEATER, CHASSIS, DASH AREA

A 90,000 BTU heater is located at the right front corner and controlled by the heat selector switch on the dash.

HEAT, ELECTRIC

WLSP

Electric forced air heaters (120 VAC) are located in the bedroom, bathroom, galley and living room for auxiliary heating. The heaters are controlled by separate zone thermostats. AC/heat master switches are provided to allow the heaters to be started or stopped individually from the pilot's area.

WLWB & WBSA

Electric forced air heaters are located in living room and bath, controlled by remote thermostats. AC/heat master switch control the living room heater from pilot's area.

HEAT, LPG HYDRONIC (WLSP)

This heat system will contain the following:

- 2- LP Boilers w/Pumps
- 2- Control Panels (one in Driver's area and one in Bedroom)
- 3- 10,000 BTU Power Convector, Natural Convector (one under sofa, kitchen base cabinet and bed)
- 1- Heat exchanger located in right rear compartment (this serves as engine preheat and supplies motor aid and function of water heater).

HEAT, LPG HYDRONIC, W/HEAT EXCHANGERS (WLWB & WBSA)

Hydronic heat system will consist of the following:

- 2- LP Boilers located outside Coach
Natural Convector
- 2- 10,000 BTU 12 VDC Power Blower (one under sofa and one in bath vanity)
(WLWB ONLY)
- 2- Electronic Control Panels (one in driver's area and one in bedroom)
- 2- Heat Exchanger located on RH frame rail at Tag Axle (this serves as engine preheat and supplies motor aide function of water heater.)

KITCHEN / DINETTE

BLINDS, VENETIAN (KITCHEN)

The blinds are tension type and are installed inside the window trim. Not available on side aisle (WBSA) coaches.

COOK TOP, GAS

The two-burner cook top is fueled by the coach LPG system. Unit includes a 120 VAC electronic ignition.

A cook top cover made of CORIAN with natural oak bull nose, is provided. The cover is hinged.

COUNTERTOP

The countertop is 1/2" thick CORIAN with an oak bull nosing.

CUTLERY TRAY

A plastic tray is installed loose in an upper drawer in the kitchen base cabinet for storing kitchen utensils.

DINETTE, FOUR PLACE (WLWB & WLSP)

The dinette is a four place bench type. The table top is CORIAN with oak wood bull nose. Cushioned bench-type seats are fabric covered and color coordinated to the interior decor and are mounted to a base covered in the same fabric. The table is mounted on a canter- lever leg.

NOTE

This dinette does not convert to a bed.

DINETTE, THREE SEAT, CORIAN TOP (WBSA)

This dinette consists of one double booth type seat and one single booth type seat and a CORIAN table.

DISHTOWEL RODS

A dishtowel rack is installed inside the kitchen base cabinet door.

FLOOR, PARQUET, WHITE OAK (WLWB & WBSA) OPTIONAL ON WLSP

White oak parquet flooring in kitchen and dinette area.

FOOD CENTER

The built in variable speed motor driven counter unit is designed for AC operation. Operable only when generator is on, or when coach is connected to shoreline hookup. Food center includes blender.

GALLEY PANEL

The systems monitoring and control panel, is located above the microwave/convection oven. This panel provides a convenient means of displaying inside and outside temperature, time, level of potable water supply, holding tanks, and LPG supply, as well as other functions listed below.

1. **Water pump switch w/indicator light** - to indicate when power is being supplied to pump.
2. **Refrigerator alarm** - monitors the refrigerator temperature when the switch is on. An audible alarm sounds if unsafe temperature levels are encountered.
3. **Generator switch** - controls the stop/start operation of the generator.

INSTANT HOT WATER HEATER

A 120 VAC hot water heater is located under the kitchen cabinet with a spout located adjacent to the sink. The instant hot water heater supply line is connected to the water purifier. A red lighted master switch is located under the kitchen counter to alert coach occupants that the heater is "ON".

ICE MAKER

The ice maker, located in the kitchen base cabinet behind door, is designed to provide a continuous automatic supply of ice cubes. The ice maker operates from shoreline, generator or inverter.

LIGHTING, FLUORESCENT, INDIRECT

WLWB

A 12 VDC light bar with two spotter lights are mounted at the kitchen and dinette overhead cabinet.

WLSP

A 120 VAC fluorescent fixture is installed under the kitchen overhead cabinet. A 120 VAC fixture is installed over the dinette. Fixture is controlled by a rheostat installed beside the fixture.

A 12V fixture is recessed in the valance over the entrance door.

WBSA

A 12 VDC light bar with two spotters lights are mounted at the kitchen and dinette overhead cabinet.

(1) ceiling light fixture w/vista light mounted inside fixture.

MICROCONVECTION OVEN

The microconvection oven is mounted above the gas cook top and is powered by either shoreline or generator and by the inverter on WLWB and WBSA. It includes a light under the microwave oven and a temperature probe and vent.

MIRRORS (WLWB & WLSP)

Clear mirrors are provided on the wall behind and adjacent to the cook top. These mirrors are framed with oak trim.

MIRRORS (WBSA)

Clear mirrors are provided on the wall behind and adjacent to cooktop.

PANTRY, PULL-OUT (WLWB & WLSP)

The (2) two section vertical pantry is mounted on slides for easy access to supplies. The pull out pantry is built into the wall for WLWB and rear of refrigerator for WLSP.

REFRIGERATOR/FREEZER

An automatic energy seeking refrigerator with separate doors for freezer and refrigerator sections. The refrigerator automatically operates on LP gas or it may be electrically powered on 12 volts while traveling or on 120 volts from generator or shoreline. The refrigerator doors are wood raised panels. Storage compartments are provided above the refrigerator.

SAFE

The safe is located under the dinette seat base and is bolted to the floor. Lock is a combination type set by the owner.

SHADES DAY/NIGHT

Tension shades are installed for the dinette window and are installed inside the window trim. The shades are color coordinated to the interior decor.

SINK (WLSP)

Single bowl CORIAN undermount sink includes a spray attachment and a single lever faucet with a sink cover.

SINK (WLWB & WBSA)

Drop in enamel bowl sink includes spray attachment and single lever faucet.

STEPWELL (WLSP)

The cover is installed in the entrance door area. Cover is a manual slide out. The top of the cover is covered with rubber. A light is provided in the stepwell which illuminates when the step is extended. A switch is provided on the switch panel to allow the light to be turned off if the step is left in an extended position.

WASTE BASKET

A plastic waste basket is included under the kitchen base cabinet.

LIVING ROOM

COMPANION CHAIRS

WLWB includes (2) chairs. WLSP and WBSA includes (1) chair. Chairs are covered in fabric. The chairs are mounted on a swivel base.

LIGHTS, BULLET

12 VDC lights are installed in the bottom of the over head cabinets and are controlled by separate toggle switches.

LIGHTS, FLUORESCENT

120 VDC recessed fluorescent fixtures are installed in the bottom of the over head cabinets. Indirect fluorescent lighting is provided above the over head cabinets.

SOFA

Sleeper sofa fabric covered. Includes (2) throw pillows wrapped in fabric to match sofa.

SOFA, CURVED (WBSA)

Consists of a cushioned "L" extension on sofa.

END TABLE (WLWB & WBSA)

The table is located at the rear of the sofa. Table is wood with one (1) door.

END TABLE (WLSP)

The all wood table with wood top, is located at the rear of the sofa.

TABLE, ALL WOOD

Table will have a raised panel door.

MECHANICAL SYSTEMS

AIR ACCUMULATOR, WATER SYSTEM

An air accumulator in the water system will smooth out the water flow by eliminating water hammer and pulsations from the water pump. The accumulator incorporates a diaphragm to prevent the unit from becoming water logged.

BULK OIL FILL, DIRECT INJECTION INTO BLOCK (WLWB & WBSA)

The bulk oil fill feature includes a pressure operated system to allow the owner to select an amount of oil to be pumped into the engine. An oil storage tank (approx. 20 qt. cap.) is located on the RH side of the engine compartment. A meter is provided to measure quantity and a totalizer to track all oil added to date.

LEVELING JACKS, HYDRAULIC, AUTOMATIC (WLWB & WBSA)

Includes (4) Hydraulic operated leveling jacks. Controls for automatically leveling the unit in the campsite are located on the wall next to the driver.

LEVELING JACKS, HYDRAULIC MANUAL (WLSP)

Four hydraulic-operated leveling jacks, one at each corner of the coach are controlled by four manual valves and a leveling master mounted in the floor by driver. The jacks lower and retract in a vertical direction.

TANK, FRESH WATER, 100 GALLON (WLSP)

The tank is located beneath the wardrobe closet. The tanks is non-pressurized so that system water pressure is developed by a demand pump when not connected to commercial water.

TANK, FRESH WATER, 137 GALLON (WLWB & WBSA)

The tank is located beneath the bed. The tank is non-pressurized type so that system water pressure is developed by a demand pump when not connected to commercial water.

TANK, LPG

One hundred forty-eight pounds of LPG or liquified petroleum gas is stored in a 45 gallon frame-mounted tank. LP gas is the energy source for the refrigerator, cook top and gas furnaces. Tank controls include main gas valve, pressure regulator, filler connection and a 20% relief valve. Tank level can be monitored on the galley panel digital display when the propane tank button is pressed.

LP cutoff valve is located in outside LPG compartment and controls LPG flow to all coach systems.

WATER PUMP

A factory calibrated pressure control switch is preset to turn the water pump on when the system pressure falls below 20 psi; and turns it off when pressure reaches 35 psi. Water pump enables switches are located on the systems monitor panel, in the bathroom medicine cabinet and dash area.

WATER PURIFIER

The bacteriostatic water purifier filters and purifies potable water to eliminate tastes, odor, and coloration produced by chlorine, rust bacteria, insecticides, detergents, sediments and other foreign objects. Satisfactory elimination of water-borne disease-carrying bacteria is accomplished by a hygienic filter bed which consists of silver ions absorbed on sponge silver metal which is deposited in a finely divided form on granular activated carbon of high surface area. The water purifier is connected to cold water supply of both the bathroom and kitchen sinks, the ice maker and instant hot water faucet. The water purifier is a self contained unit designed to purify 75,000 gallons before requiring replacement.

PILOT / CO-PILOT AREA

CB RECEIVER/TRANSMITTER

Forty-channel, cb receiver/transmitter is installed in the hood table with all controls in the hand-held portion. This unit includes left hand and right hand speakers with volume control located in the driver's and co-pilot's area.

CLOSED CIRCUIT TELEVISION SYSTEM INCLUDES:

CAMERA

Located in the rear bulk head. The lens is pre-set to focus from about four feet to 300 feet. The camera is black and white only.

FAN

A fan is located in the rear view camera cavity to prevent fogging. Switch is located on left hand overhead dash panel.

MONITOR

Located on the lower dash panel by driver. Controls are located on RH lower auxiliary dash panel.

STEPWELL AREA (WLWB & WBSA)

An air powered stepwell cover retracts and extends from under the co-pilot's seat. In/out controls are located on the co-pilot's system control panel. An air override switch is located to the right side of the co-pilot seat to permit manual retraction in the event of low air pressure.

A 12v light is provided in the stepwell to facilitate entering or leaving the coach at dark. The light illuminates when the entrance step is in the extended position. A switch is provided on the entrance door panel which permits the light to be turned off if the step is left in the extended position.

HOOD TABLE

The hood table includes (3) raised panel drawers. The upper drawer includes (2) stadium size cupholders and (2) ashtrays.

FOOTRESTS

Folding footrests are provided for the driver's left foot and the co-pilot on WLWB and WBSA. On WLSP models a footrest is provided for the driver only.

MUSICAL HORNS

A solid state stereo programmed electronic horn which can play a number of tunes available from the integral computer storage library. This unit is located in the lower dash. Dual speakers are located on the roof.

LOCK, ELECTRIC, ENTRANCE DOOR (WLWB & WBSA)

The entrance door includes an electric dead bolt lock with switches on the upper dash panel, on bedroom, control panel and also on the entrance door control panel on the WLWB only. Lock can also be manually operated from the keyless entry keypad switch adjacent to the entrance door.

RADAR DETECTOR

The unit provides a flashing red warning light and beeping signal indicating radar detection. A radar master switch is located on the lower dash to turn the unit on or off.

SEAT, PILOT AND CO-PILOT (WLWB & WBSA)

Includes leather pilot and co-pilot seats with (6) six way adjustable power seats and electrically operated lumbar support. The adjustable lumbar support allows the driver or co-pilot to adjust the seat's lower back (lumbar) area to fit his or her lower back contour at the push of a button. The (6) six way controls adjust seat bench tilt up/down and front/back. In addition the pilot and co-pilot seat have a 360 degree swivel base. Includes retractable seat belts.

SEAT, PILOT AND CO-PILOT (WLSP)

A six way electrical pilot seat and co-pilot seat, upholstered in leather and matching vinyl. Controls are built into seats. Controls allow seat bench to tilt up/down and front/back. The pilot and co-pilot seats have a manual tilt for the seat back and 360 degree swivel bases. Retractable seat belts are included.

SHADES

Day/night tension shades are mounted on the driver, co-pilot windows. Shades are installed on the inside of the window trim and are color coordinated to the interior decor.

SEAT BELTS, RETRACTABLE

Retractable seat belts are installed for driver's and co-pilot's seats.

LIGHTING. VALANCE

12 V bullet lights is provided in the pilot and co-pilot cabinets. These lights operate independently from separate switches.

STEERING WHEEL WITH TILT AND TELESCOPING COLUMN

Steering wheel is a 20" diameter wheel upholstered in leather. Includes two flat black rally type spokes tapering below the center of the wheel. The steering wheel tilt control allows multiple positioning of the steering wheel in increments of 7 degrees. Includes telescoping steering column which can be locked at infinite locations within it's telescoping range of 2.25 inches.

STEREO SYSTEM

Tuner cassette features direct access tuning, 30 channel preset memory, seek and manual tuning, dolby B noise reduction, metal tape capability, and loudness switch. Includes four full range coaxial speakers in the living room.

STORAGE COMPARTMENT, FRONT OVER HEAD

Storage compartments are provided on the left hand and right hand side of the front over head dash area.

TELEVISION, FRONT OVERHEAD

A built-in 20" stereo color tv/monitor. TV has remote control, stereo MTS broadcast reception, audio video inputs, and is cable compatible. This television will not operate while in transit.

VENTS, FRESH AIR

Air powered cowl-mounted fresh air vents for the pilot and co-pilot are provided. Switches are located on the right hand upper panel.

TRIP ODOMETER

Indicates miles driven since last reset. Includes a reset bar. The odometer is located on the overhead dash panel.

SAFELINE ALARM

An audible and visual alarm in the driver's area. That is activated in the ignition key is turned on while the coach is connected to shoreline power.

WINDSHIELD BLIND

A blind that extends across the pilot and co-pilot area is provided. Hooks are provided in the bottom of the overhead to secure the blind while in transit.

VISOR, SUN

Visors are provided for the pilot and the co-pilot. Visors are tinted and can be positioned as desired.

WASTE SYSTEMS

POWER DUMP VALVE SYSTEM FOR HOLDING TANKS

Air operated cylinders with a control panel are located in the roadside holding tank compartment. The panel includes a toggle switch for dumping each tank and an air pressure gauge for the system. A manual operating tool is attached to the control panel in the event of low air pressure.

TANKS, HOLDING

Separate holding tanks for gray water and waste water are provided. Each holding tank has a separate drain valve, dumping gray water and wastes through a common single discharge connection. An individual vent system connects each holding tank to vent stacks located on the coach roof.

APPROXIMATE CAPACITIES

	<u>GRAY</u>	<u>WASTE</u>
WLSP	94 gal.	90 gal.
WLWB & WBSA	100 gal.	100 gal.

The tanks are enclosed in exterior compartment on each side of the coach. Tanks are heated by 120 VAC electric heating pads with thermostats for both holding tanks to prevent freezing down to 0 degrees F. The tanks include level indicators.