

1967

OWNERS
MANUEL

BLUE BIRD
wanderlodge

1997

OWNERS

WAMNEN

BLUE BIRD
wanderlodge®

BLUE BIRD
wanderlodge®

Division of
BLUE BIRD BODY CO.
Fort Valley, Georgia 31030
Area Code 912 825-2021

Gentlemen:

Your recent purchase of a Blue Bird Wanderlodge is sincerely appreciated. Thank you for the confidence you have placed in our product. I am sure your new Wanderlodge will mean many happy miles of motoring.

This company wants you to receive full benefit from the engineering and production qualities built into the Blue Bird Wanderlodge. Because of our policy of standardization, your Wanderlodge productive time will be increased as parts are readily available through numerous sources throughout North America and the world.

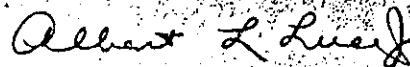
Your coach was carefully inspected and passed our high standards before it left the plant. Like all pieces of fine equipment, however, each component will adjust and seat itself during the first several hundred miles of operation. To insure longer, trouble-free operation, we urge you to follow the simple preventive maintenance rules listed in the maintenance manual and parts catalogue. Following these routine maintenance procedures will be required to receive peak performance from your Blue Bird Wanderlodge.

We are proud you selected Wanderlodge, and we look forward to a long and pleasant association. We want you to know our facilities as well as those of our suppliers are at your disposal to make certain your Blue Bird Wanderlodge is everything you want it to be - - - the best Motor Home buy in America.

Yours very truly,

WANDERLODGE DIVISION - BLUE BIRD BODY CO.

BLUE BIRD BODY COMPANY



Albert L. Luce, Jr.
President

WANDERLODGE DIVISION

BLUE BIRD BODY COMPANY
Fort Valley, Ga.

I. CHASSIS SYSTEM

A. TRAVELING:

Before starting on long trips, you should follow the maintenance procedures listed in your Maintenance Manual and Parts Catalogue concerning oil, water, lubrications, air pressure, etc. For extreme cold climates you should add a quart of anti-freeze every time you dump the septic holding tank. Add this through the shower drain. Secure all the objects in the Wanderlodge which might fall during transit. Follow the "Check Out" list provided with these instructions.

B. PARKING:

To park your Wanderlodge safely, always be sure the emergency brake is in the "ON" position. Park the Wanderlodge level. Use the four-way level mounted on the dash. The small bubble should be inside the lined circle. For extended periods of remaining in one location, you should start the engine periodically to maintain the battery charge. Drain the water tank and cut off the 12-volt water pump if you will be connected to commercial water for an extended period.

C. EMERGENCY BRAKE:

The emergency brake (Hand Brake) is located on the left-hand side of the driver's seat. The brake is "ON" when the lever is upright and the brake is "OFF" when the lever is in the forward position. Adjustment can be made on the emergency brake by turning the end knob clockwise (Right Hand) to tighten the brake and counterclockwise (Left Hand) to loosen the brake with the brake in "OFF" position.

D. AUTOMATIC TRANSMISSION:

To start the engine, the gear lever must be in the "N" (neutral) position. For normal driving, use the high range, "3-HI." The other ranges are to permit driving in ice, mud, on steep inclines, or in heavy traffic without continuously changing gears. To use the engine for braking power on steep down grades, shift into the low range "3-5", "3-4", and push the brake retarder down. The brake retarder is the foot pedal to the left of the brake. DO NOT SHIFT INTO A LOWER RANGE, PARTICULARLY LO-2, UNTIL THE VEHICLE IS TRAVELING AT A RELATIVELY LOW SPEED.

E. INSTRUMENTS AND SWITCHES:

Your Wanderlodge may be equipped with many switches and devices which make it appear complicated to operate. THIS IS NOT THE CASE. The following is a list of operating switches for the Wanderlodge. Some of these are standard equipment and some are used only with the optional equipment. They are as simple as the switches on your automobile and will afford you comfort and pleasure while traveling. Learn to use these and study the operator's manual for their operations. All the switches are plainly marked on the instrument panel.

1. Heater Switches.

Heater switches are two-stage switches. The first click makes the fans in the heater work on low speed. Pulling the switch out to the second click makes the fans motor work on high speed.

All heater switches are designed to make the heater operate at low or high speed, depending upon your heat requirements.

2. Defroster Switch.

This switch is also a two-stage switch.

3. Marker Lights.

The marker light switch turns on the exterior running lights. These are the four lights on each corner and the three cluster at front and rear. They must be used in conjunction with headlights for night driving.

4. Fans.

These switches control the 6' fans located on the dash. They too are two-speed.

5. Entry Lights.

The entry light switch controls the two lights in the driver's area and one in the entrance door step.

6. Flasher. (Located bottom of dash board, next to steering column.)

The flasher switch will make all directional signals flash simultaneously.

7. Rear Speaker.

The rear speaker switch controls the rear speaker of the radio in the bedroom.

8. Transmission.

This is the one inch pilot light located on the main instrument dash. Should this light flash red, stop immediately. This light comes on only when the transmission is over heating. Check the cause of over heating, the fluid level in the transmission, and the water level in the main engine radiator. If these are both satisfactory, allow time for fluid to cool. It could have been caused by extended use of retarder.

9. Power Plant Indicator Light.

The power plant indicator light is located near the hour meter. It is only on when the power plant is running.

10. 12-Volt Water Pump Switch.

To be shut off when unit is stored or when using commercial water.

11. Instrument Lights.

To eliminate 12-volt instrument panel.

F. ADJUSTING THE SEATS IN THE DRIVER'S AREA:

The seats in the driver's area are designed for six-way adjustment. To raise the seat, loosen the "T" shaped handle behind the center post and pull the seat up to the desired height. To lower the seat, depress the pedal in front of the post and the seat will automatically lower. When you have reached the desired height, tighten the "T" handle behind the post. To adjust the seat forward or backward, pull out the knob below the seat cushion the right-hand side. Slide the seat forward or backward to the position you desire. When you have reached the desired position, move the seat enough for the locking mechanism to click. This will lock the seat in position. To tilt the back of the

seat, pull out the knob on the right-hand side just below the seat back. Tilt the back of the seat to a position you desire. Move the seat enough for the locking mechanism to click.

G. DUAL GAS TANK OPERATION:

If you selected dual gas tanks, these can be controlled from the driver's area. There are three controls for dual gas tanks:

1. Selector valve located on the floor rear of the steering column.
2. Fuel pump control toggle switch located on the street side of the driver's instrument panel.
3. Gas gauge selector toggle switch located on the street side of the driver's instrument panel.

To use gasoline from the rear tank, turn the selector valve so that the arrow on top of the selector valve is pointing to the left (street side). Push the fuel pump toggle switch and gas gauge toggle switch to the left side (street side).

To use gasoline from the front tank, turn the selector valve so that the arrow on top of the selector valve is pointing to the right (curb side). Push the fuel pump toggle switch and gas gauge toggle switch to the right (curb side). The optional power plant will always use gasoline from the front tank. The power plant will run out of fuel before the chassis engine because of higher position of supply line.

II. HEAT SYSTEM

A. CHASSIS HEAT SYSTEM:

The Blue Bird Wanderlodge may be equipped with an optional 85,000 BTU heater at the front right-hand corner and an optional 72,000 BTU heater underneath the front dinette seat. These heaters use the chassis engine hot water as a heat source.

All heaters are equipped with automatic air removers, but to insure maximum heat, we recommend bleeding the heaters periodically. A valve for bleeding is provided for each heater. This is recommended when air pockets have built up in the heater core.

The front heater is equipped with three large squirrel cage blowers which are controlled from the driver's instrument panel. One blower is used for defrosting, one blower is used for the driver, and one blower for the right side of the unit.

The rear heater is controlled from the driver's instrument panel. This heater has two two-speed blowers.

All Wanderlodge heaters are equipped with valves to stop the circulation of engine hot water through the heater cores. For summer time driving, close the valves on the heater water hoses. These valves are accessible underneath the engine hood or adjacent to it and function like the water valves in your home. The valves should be opened in winter. The coolant level in the radiator should be checked after these valves have been opened. If the liquid in heater lines has evaporated during summer use, the radiator will lack sufficient coolant and overheat.

B. GAS FURNACE:

Your Wanderlodge is equipped with two butane gas furnaces. One is located at the rear of the kitchen area and one is located to the right of the entrance door.

These heaters are 100% safe and all gas to the heaters will cut off if the pilot light is extinguished. They are sealed-combustion type heaters. This means combustion air is taken in and exhaust gases are discharged through the ceiling vent. The ceiling vent is a tube-within-a-tube for this purpose. You cannot use these heaters while the coach is in motion since the downdraft would extinguish the flame and pilot light.

To light these heaters, first turn on the gas at the main supply tanks. Turn the valve to the "Pilot" position and push in. Hold for thirty seconds then with a match, light the pilot through the access hole on the right-front face of the heater. Always CLOSE THE ACCESS HOLE AFTER LIGHTING PILOT.

Hold the valve in for one minute or until the pilot remains lighted. Now turn the valve to the "ON" position and adjust the thermostat. The thermostat for the forward heater is located on the curb side front wall. The thermostat for the rear heater is located in the rear bedroom.

Always leave the valve in the "OFF" position while traveling or when the heater is not being used.

III. WATER SYSTEM

A. ON-BOARD WATER SYSTEM:

Your Blue Bird Wanderlodge has a 58.5 gallon aluminum water storage tank located under the curb-side rear bed. You may use water from this tank or from commercial sources. The on-board water system has a 12-volt water pump and will operate while the vehicle is in motion. When using the on-board water, you will hear a slight noise at the rear of the vehicle. This is the water pump and it will automatically stop and start as you open the faucet to use water. It is preset at the

factory for 15 pounds of pressure per square inch. Always leave the water pump switch in the "ON" position unless you are connected to commercial water sources or will be away for an extended period. Your water storage tank has a two-inch drain plug underneath the unit. Periodically remove this drain plug and wash the storage tank. You have two hose connections on the rear of the coach. One is for using commercial water, the other for filling your water tank. When filling the tank, remove the cap from the overflow outlet. The tank is completely full when water comes out of this outlet. This outlet may also be used for filling when a hose is not available.

IV. ELECTRICAL SYSTEM

Your Blue Bird Wanderlodge has two electrical systems. One is a 12-volt system which utilizes the chassis battery and the other is a 110-volt system which may use generated power or commercial power.

A. THE ELECTRIC POWER PLANT:

The electric power plant can be started from the inside or outside of the vehicle. To start the generator, first turn all appliance switches to the "OFF" position. One starter switch is located on the instrument panel and one is located on the power plant. Push the starter switch to the "ON" position and hold until the power plant starts. This switch should be held in this position for at least 15 seconds even if you do not hear the starting noise. It may be released as soon as you hear the power plant running. To stop the power plant, hold the switch in the "OFF" position until the power plant is completely stopped.

For hard starting there is a knurled knob on the back of the carburetor which controls the choke.

To use the generator's power, plug the selector cable into the outlet marked "Generator." This selector cable is located in the rear closet beside the main switch panel. Service the power plant according to the instructions furnished with your unit.

CAUTION: Do not plug in the power source selector cable to the generator outlet unless all the electrical equipment is in the "OFF" position.

B. COMMERCIAL POWER:

To use commercial power, first turn all appliance switches to the "OFF" position. Connect the shore line to the Wanderlodge receptacle located in the rear, adjacent to the street-side tail light.

Plug the power source selector cable into the outlet marked "Commercial." The power source selector cable is in the rear closet beside the main switch panel. If 110/220 volt power is available, you may connect directly to this source with the shore line. If 110 volts is the only source available, plug the shore line into the power box supplied with the Wanderlodge. Now connect the extension cord, which is provided, into the power box and then into 110 volt source.

IMPORTANT: Your Wanderlodge has been wired according to the National Electrical Code. All 110-volt wiring is a three-wire service and all 220-volt is a four-wire service. If you connect to a system which has only a two-wire circuit, ground the third wire on the adapter which you will have to use.

IMPORTANT: A 110-volt commercial outlet will not operate all the electrical equipment in your Wanderlodge. You may operate only one air conditioner and the lighting or electric hot water heater and the lighting. If you overload this circuit, you may blow a fuse in the commercial power circuit.

C. THE 12-VOLT SYSTEM:

The 12-volt system is connected to the chassis battery. This system is used when you do not desire to use the power plant or commercial sources. It also operates the water pump and exhaust fan.

Continued use of this system will drain the battery power. Start the chassis engine periodically to recharge the battery.

IMPORTANT: If it is necessary to connect both batteries together, always connect the poles on the two batteries to the same polarity. (i.e. positive to positive or negative to negative.) Permanent damage can be done to the chassis if the cable is not connected properly. The easiest way to jump from one battery to the other is to use only one cable and connect two positive posts with jumper. The ground cables (negative) already have a common ground in the chassis frame.

V. SEPTIC SYSTEM

A. DRAINING THE SEPTIC TANK:

To drain the septic tank, first remove the safety plug from the end of the septic valve by turning the lock ring counterclockwise. Insert the 3" septic tank hose coupling into this valve and tighten the lock ring, then place the discharge end into a septic container. Open the septic tank valve by turning the handle to the left (counterclockwise) and pull the valve stem out. This will discharge the septic tank.

To clean the septic tank and to reduce odor, add a cup of detergent into the septic tank after emptying it. The agitating action of the vehicle will clean the tank.

DRAIN YOUR SEPTIC TANK OFTEN. DO NOT ALLOW THE SEPTIC TANK TO OVER-FLOW.

VI. APPLIANCES

A. AIR-CONDITIONERS:

Air-conditioners used in the Wanderlodge are standard house-hold air-conditioners. Wait one minute before changing the operating range on the air-conditioner.

Your air-conditioners will remove moisture from the air. This moisture is drained through a series of tubing and discharges underneath the vehicle.

B. HOT WATER HEATER:

The 110-volt electric hot water heater in the water system is controlled by a switch located at the left of the kitchen over the butane heater. The hot water heater can be turned "ON" or "OFF" while driving. However, the power generator should not be started with the heater on.

C. RANGE AND OVEN:

The range on the Blue Bird Wanderlodge will require matches to light the pilot lights. The oven is controlled by a series of two pilots. To use the oven raise the top to the stove and turn the oven valve "ON." Light the pilot light located to the rear of the main oven burner. Turn the knob to the temperature you desire, and the burner will come on after about thirty seconds.

D. REFRIGERATOR:

Controls for both systems are in the panel at the base of the refrigerator.

LPG Operation - To light the refrigerator, turn the gas valve to the "ON" position. Push "IN" the red button on the left-hand side of the refrigerator. Hold for thirty seconds. Light the pilot light by turning the flint lighter knob clockwise. This works like a cigarette lighter. Continue to hold in the red button until the pilot light will remain lit. Select the temperature you desire on the temperature selector knob adjacent to the pilot control knob.

Electric Operation - To operate the refrigerator electrically, turn the gas valve to the "OFF" position and turn the electric switch to the "ON" position. Set the temperature selector knob to the desired temperature.

E. DINETTE:

To make a bed out of your dinette, install the table support bracket between the seats of the dinette on the outer edge. Fold up the leg on the table by pulling the spring collar down and fold the leg up. Remove the table from the wall brackets and lower the table to rest on the back edges of the dinette seats and the table support bracket. Remove the dinette seat backs by lifting upward. Place the dinette back cushions between the dinette seat cushions. This will form a bed.

F. SOFA BED:

To make a bed out of the sofa, lower the legs on the front part of the sofa platform, this is the same type leg as the dinette. Slide out the seat panel of the sofa until the back is unfolded.

G. LPG OPERATION:

Your Wanderlodge is equipped with two bottle gas tanks and an automatic change-over valve. Turn on both valves. Turn the arrow on the regulator valve so that it points to either tank. The coach will use gas from this bottle until it is exhausted. It will then automatically start using from the other tank. When this change-over occurs, a red indicator will show on the gas regulator. Fill the exhausted bottle gas tank and turn the arrow on the gas regulator to point to the other tank. This indicator is a warning that you have used all the gas from the tank it is pointing to.

BEFORE YOU TRAVEL

1. Close the side awning windows.
2. Put the entrance step in the travel position.
3. Secure the television and loose items inside the unit.
4. Disconnect all service lines and stow them away.
5. Insure all drawers and doors are in the locked position.
6. Check the tightness of the LPG bottles.
7. Turn the LPG heaters "OFF."
8. Check the light system.
9. Check tire inflation and oil.
10. Release the emergency brake.
11. HAPPY WANDERLODGING!!

WHEN WANDERLODGE NOT IN USE

1. Shut off 12-volt water pump.
2. Shut off all other 12-volt accessories.
3. Shut off LPG bottles.
4. Drain water tank.
5. Drain hot and cold water lines (cold weather) or plug in 110-volt power so thermostatically controlled heat tape will operate.
6. Put anti-freeze in holding tank through shower floor drain (cold weather).
7. Shut all windows and vents.
8. Remove keys and lock entrance door.

SUMMARY OF WARRANTY

A. CHASSIS

The Blue Bird Chassis is warranted for 12,000 miles or 12 months. This applies to all parts except tires which carry the warranty of the respective manufacturer. Service on the chassis may be obtained from an authorized agency of the manufacturer, that is, Ford, Chevrolet, or GMC.

Manufacturer: Blue Bird Body Company

B. BODY

The body is warranted for 12,000 miles or 12 months with the exception of purchased parts (lights, switches, etc. which are warranted for 90 days.)

Manufacturer: Blue Bird Body Company

C. POWER GENERATOR

The power generator is warranted from defects in material and workmanship for one year. For service consult Parts Service Catalogue for authorized factory trained service personnel.

Manufacturer: Onan Division of Studebaker
2515 University Avenue, N. E.
Minneapolis, Minnesota

D. REFRIGERATOR

The refrigerator is warranted from defects in material and workmanship for 12 months. Service on the refrigerator may be obtained from one of the service dealers found in the Dometic Service Catalogue.

Manufacturer: Instamatic Corporation
530 McDonald Street
Elkhart, Indiana

E. HOT WATER HEATER

The hot water heater is warranted to be free from defects for one year. This warranty applies to parts only and not to labor.

10 Gallon
Manufacturer: Hemco, Inc.
Bowen Division
Wixom, Michigan

20 Gallon
S. H. Leggett Company
Marshall
Michigan

F. KITCHEN RANGE

The kitchen range is warranted to be free from defects and workmanship for a period of 90 days. This warranty is for parts only and does not include labor charges.

Manufacturer: Magic Chef Company
King Edward Avenue
Cleveland, Tennessee

G. AIR CONDITIONERS

The air conditioner's are warranted to be free from defects in material and workmanship for a period of one year. This warranty includes parts but does not include labor.

Manufacturer: Norge Sales Corp.
Division of the Borg-Warner Corp.
Chicago, Illinois

H. STEREO TAPE PLAYER

Warranty against defects of material and workmanship for 90 days.

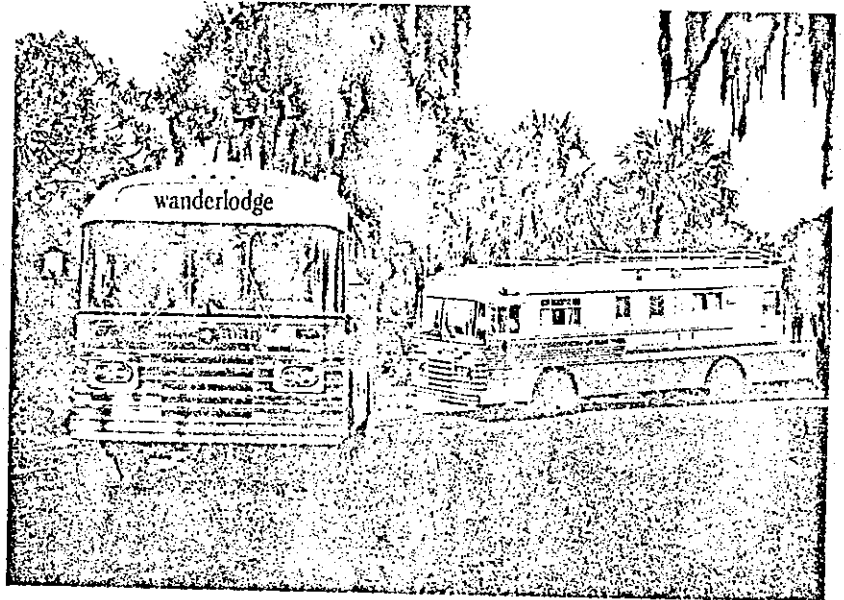
Manufacturer: Craig Panorama, Inc.
3412 S. LaCienega Blvd.
Los Angeles, California

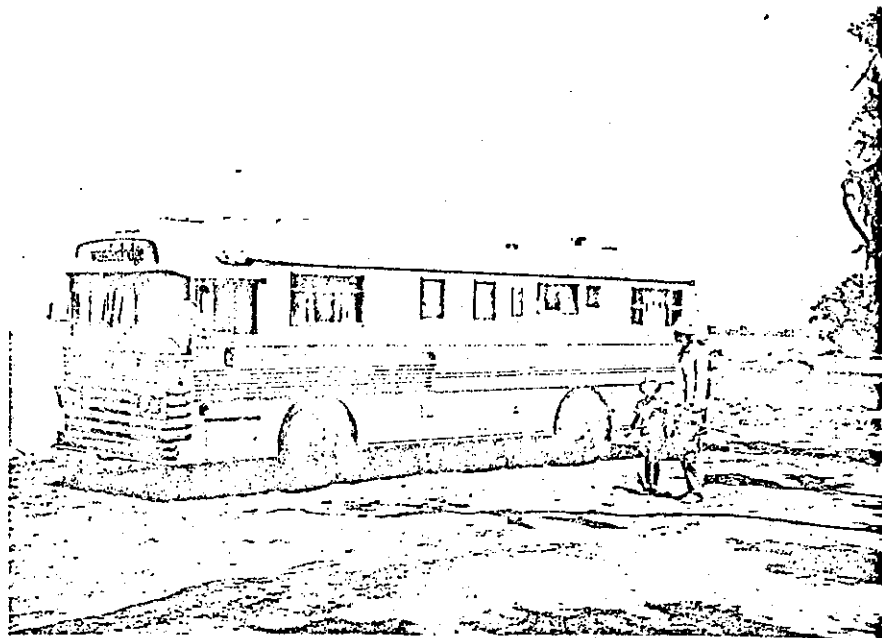
I. BUTANE FURNACE

The Butane furnace is warranted for one year against defects in material and workmanship.

Manufacturer: Carlson Industries
313 S. Raymond Avenue
Alhambra, California

BLUE BIRD
wanderlodge®



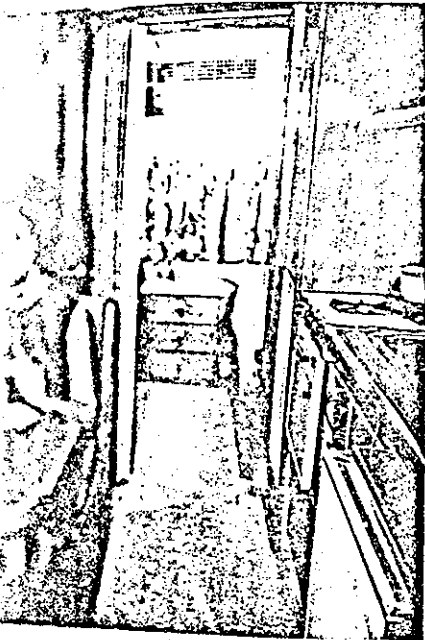
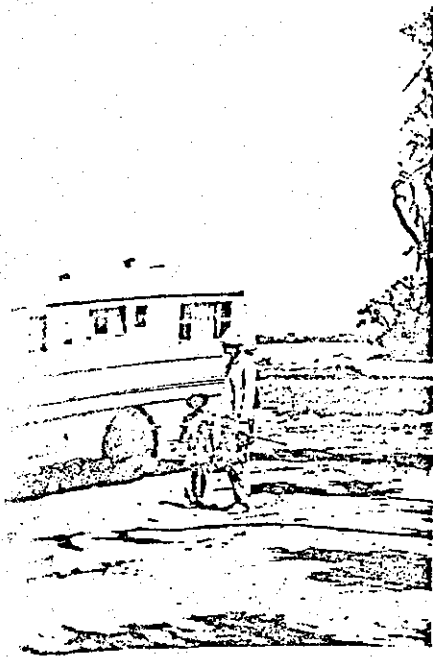


Engine OPTION GROUP

| ENGINE | BODY MODEL | LENGTH | TRANSMISSION | NET PRICE |
|----------------|---------------|--------|----------------------|------------|
| Ford 391A | TH305 | 30'10" | Allison Automatic | \$21,063 ✓ |
| GMC 401A | TH305 | 30'10" | Allison Automatic | 21,586 |
| Chevrolet 366A | TH305 | 30'10" | Allison Automatic | 21,213 |
| Ford 391 | TH305 | 30'10" | 5-Speed Synchro Mesh | 20,313 |
| GMC 401 | TH305 | 30'10" | 5-Speed Synchro Mesh | 20,582 |
| Chevrolet 366 | TH305 | 30'10" | 5-Speed Synchro Mesh | 20,463 |

Chassis OPTION GROUP

| OPTION NO. | P. O. CODE | ITEM | NET PRICE |
|---------------|---------------|--|--------------|
| 4450 | C | TACHOMETER | \$ 79.00 |
| 4460 | C | VACUUM GAUGE | 30.00 |
| 4575 | C | POWER STEERING, Hydraulic | 349.00 ✓ |
| 5805 | C | SINGLE 60 GAL. gasoline tank in lieu of standard 40 gal. tank | 52.00 |
| 5807 | C | DUAL 60 GAL. gasoline tank in lieu of standard 40 gal. tank. Not available with option 5824 storage compartment LHOH | 125.00 ✓ |
| 5812 | C | SPARE TIRE, NYLON 900x20 -12 ply including wheel | 170.00 |



Body OPTION GROUP

| OPTION NO. | P. O. CODE | ITEM | NET PRICE |
|------------|------------|--|-----------|
| 5822 | B | STORAGE COMPARTMENT RHOH on the outside (16Hx28Dx58L - 15 cu. ft.) | 72.00 ✓ |
| 5824 | B | STORAGE COMPARTMENT LHOH on the outside (16Hx28Dx58L - 15 cu. ft.) NA with option 5807 | 72.00 |
| 2385 | B | ZINC COATED STEEL for extra rust protection | 147.00 ✓ |
| 5830 | B | LOCKING GAS TANK DOORS | 12.00 |

Electrical OPTION GROUP

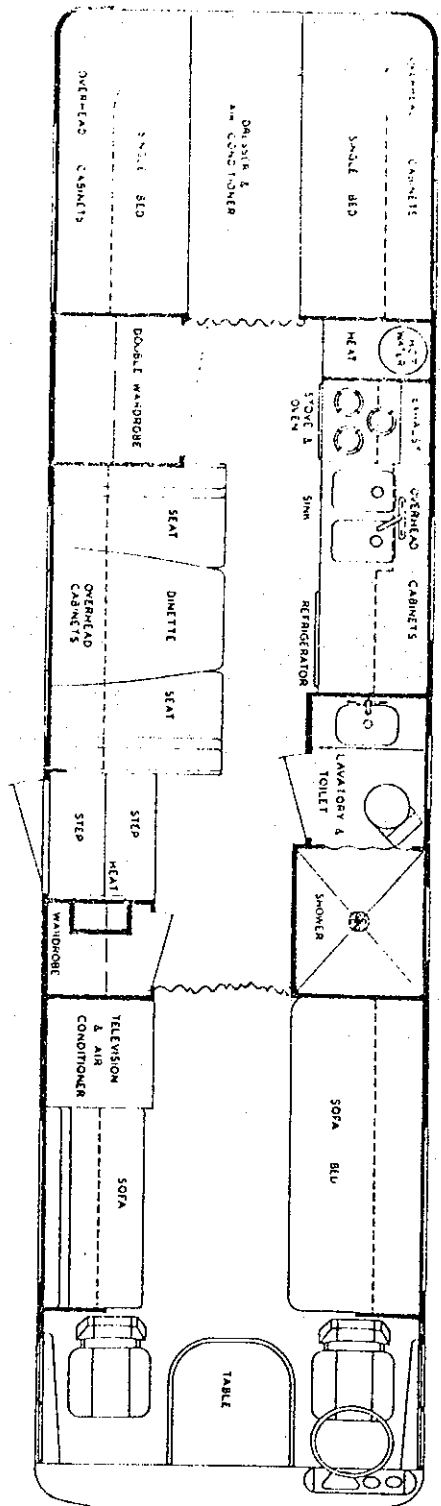
| OPTION NO. | P. O. CODE | ITEM | NET PRICE |
|------------|------------|--|-----------|
| 0525 | E | DEFROSTER FAN | \$ 18.00 |
| 0530 | E | DUAL DEFROSTER FANS | 34.00 ✓ |
| 5836 | E | CIGARETTE LIGHTER, two in driver's area | 18.00 |
| 5845 | E | 85-FC HEATER, 85,000 BTU front heater with driver's foot warmer & defroster which utilizes engine hot water as a heat source | 177.00 ✓ |
| 5850 | E | 72-US HEATER, 72,000 BTU heater in rear which utilizes the engine hot water as a heat source | 116.00 |
| 3455 | E | WINDSHIELD WASHERS | 18.00 |
| 1820 | E | DIRECTIONAL LIGHTS side mounted, connected to standard directional lights | 14.00 ✓ |
| 5860 | E | RADIO, transistor with front & rear speaker | 147.00 ✓ |
| 5863 | E | DELUXE STEREO tape player with four interior speakers | 177.00 ✓ |
| 5866 | E | POWER GENERATOR (5KW) | 1295.00 ✓ |
| 5868 | E | POWER CORD 25' for external 110 volt connection in lieu of standard | 26.00 |
| 5870 | E | AIR CONDITIONERS, ELECTRIC, one front and one rear, 9,000 BTU capacity each, 110/volts | 800.00 ✓ |

CONT'D

Interior

OPTION GROUP

| OPTION NO. | P. O. CODE | ITEM | NET PRICE |
|------------|------------|--|------------|
| 5880 | I | DRAPE, WINDSHIELD | \$ 35.00 ✓ |
| 5882 | I | DRAPE BEHIND DRIVER for night driving | 36.00 |
| 5884 | I | FOLDING DOOR for bedroom area | 36.00 ✓ |
| 5888 | I | OVEN type range in lieu of standard | 50.00 ✓ |
| 5890 | I | EXHAUST HOOD & side wall vent for range | 42.00 ✓ |
| 5894 | I | 10 GAL. EHW electric hot water heater | 66.00 ✓ |
| 5896 | I | 20 GAL. EHW electric hot water heater | 94.00 |
| 5900 | I | MONOMATIC TOILET in lieu of standard marine type | 138.00 |
| 5904 | I | EXTRA WATER CAPACITY 58.5 gal. aluminum tank underneath left side rear bed in addition to standard | 224.00 ✓ |
| 5906 | I | PLUMBING FOR EXTRA WATER TANK only | 31.00 |
| 5910 | I | WATER PURIFIER with separate spigot in kitchen | 120.00 |
| 5912 | I | TELEPHONE TYPE SHOWER HEAD | 35.00 ✓ |
| 5914 | I | GAS/110 VOLT REFRIGERATOR in lieu of standard | 41.00 ✓ |
| 5915 | I | FREEZER in front TV area | 294.00 |
| 5916 | I | BEDSPREADS for rear beds | 36.00 ✓ |
| 5918 | I | DOORS FOR TV AREA with center shelf | 36.00 ✓ |



Sales Policy

Wanderlodgees require a \$2,000 deposit before a unit can be put into production. If any special item is included on the unit, the deposit requirement will be \$3,000 with the order.

An invoice will be sent by our Accounting Department approximately two (2) weeks prior to the unit's completion.

A Certificate of Origin for registration purposes will be mailed with the invoice.

All prices are subject to change without notice.

Federal Excise Tax on chassis* and all other applicable taxes must be added unless Exemption Certificate is furnished.

Standard Equipment, F.O.B. Fort Valley, Georgia

*This averaged \$700.00 for 1966

Effective date Oct. 15, 1966

Interior CONT'D OPTION GROUP

| OPTION NO. | P. O. CODE | ITEM | NET PRICE |
|------------|------------|---|-----------|
| 5920 | I | DRAWERS IN TV AREA | 47.00 |
| 5923 | I | STORAGE COMPARTMENT over hot water heater accessible from bedroom | 35.00 |

Accessory OPTION GROUP

| OPTION NO. | P. O. CODE | ITEM | NET PRICE |
|------------|------------|--|-------------------|
| 0650 | A | FIRE EXTINGUISHER, 5 lb. dry chemical | \$ 34.00 ✓ |
| 0750 | A | REFLECTOR FLARES & FLAGS | 13.00 |
| 2344 | A | PAINT WHEELS (Specify Color) | 32.00 |
| 5926 | A | RUBBER TENDERS | 57.00 ✓ |
| 3310 | A | SHADED WINDSHIELDS in driver's area | 38.00 ✓ |
| 5928 | A | SHADED SIDE WINDOWS in driver's area | 31.00 ✓ |
| 3325 | A | DRIVER'S VENT, adjustable, ventilator at front on left & right side | 24.00 ✓ |
| 5930 | A | REAR VIEW MIRROR, interior | 11.00 ✓ |
| 5932 | A | SAFETY BELTS, one on the driver's seat and one on the companion seat | 29.00 ✓ |
| 5933 | A | DELUXE SEATS, power leveler & power shock absorber. One for driver & one for companion (air) | 500.00 |
| 5934 | A | UPHOLSTERED DRIVER'S SEAT BACKS | 35.00 ✓ |
| 5936 | A | DELUXE SUNVISOR on right side | 13.00 ✓ |
| 5940 | A | HI-LO 6 GLASS RACK WITH 2-3/4" diameter, holes for 6 glasses | 14.00 ✓ |
| 5941 | A | SILVERWARE RACK, holds 6 teaspoons, tablespoons, knives, and forks | 13.00 ✓ |
| 5943 | A | MEDICINE CABINET in bathroom | 35.00 ✓ |
| 5953 | A | LETTERING, specify script or block lettering on front above windshield | 1.80 per letter ✓ |
| 5944 | A | MAGAZINE RACK, mounted in rear bedroom | 14.00 |
| 5950 | A | MIRROR (Safety Glass) on rear closet door 14" x 60" | \$ 40.00 ✓ |
| 5955 | A | ROOF LUGGAGE rack with access ladder | 187.00 |
| 5960 | A | TRAILER HITCH with 2" ball & connection on rear for 12 volt system | 49.00 ✓ |
| 5964 | A | SEPTIC HOSE CONTAINER for storage of septic drain hose | 22.00 |
| 5968 | A | STEPWELL COVER | 26.00 ✓ |

BLUE BIRD wanderlodge®

FORT VALLEY, GEORGIA

BLUE BIRD BODY COMPANY - FORT VALLEY, GEORGIA

WANDERLODGE DIVISION

OPERATING INSTRUCTIONS

I. CHASSIS SYSTEM

A. TRAVELING

Before starting on long trips, you should follow the maintenance procedures listed in your Maintenance Manual and Parts Catalogue concerning oil, water, lubrications, air pressure, etc. Secure all the objects in the Wanderlodge which might fall during transit. Follow the "Check Out" list provided with these instructions.

B. DRIVING

Driving a Wanderlodge is a matter of becoming familiar with a different type vehicle and learning new driving habits. Wanderlodges are approximately 11 inches wider than the largest automobile. An easy way to judge position is to look out the rear view mirror and keep the left hand side of the Wanderlodge a foot or two from the white center line.

Most of you are familiar with nylon tire "thump" caused by the "balling" of nylon cord when it cools. This will "smooth out" in 5 or 6 miles of driving.

Driving the Wanderlodge is much the same as flying an aircraft. Plan ahead for turns and stops. Apply the brakes firmly but gradually. Do not apply them in a constant off and on cycle such as your automobile. This could endanger the passengers comfort in the vehicle, cause loose objects to be displaced and excessive heat of the brake fluid and lining.

C. EMERGENCY BRAKE

The emergency brake (Hand Brake) is located on the left side of the driver's seat. The brake is "ON" when the lever is upright and the brake is "OFF" when the lever is in the down position. A red light to the right of the instruments will indicate the brake is on after the ignition is turned on. With the brake in "OFF" position, adjustment can be made on the emergency brake by turning the end knob clockwise (right hand) to tighten the brake, and counterclockwise (left hand) to loosen the brake.

D. SERVICE BRAKES

The service brake master cylinders are accessible through an inspection plate in the floor at the base of the driver's seat.

E. PARKING

To park your Wanderlodge safely, always be sure the emergency brake is in the "ON" position. Park the Wanderlodge level. For extended periods of remaining in one location, you should start the engine periodically to maintain the battery charge. Drain the water tank and cut off the 12 volt water pump if you will be connected to commercial water for an extended period.

F. AUTOMATIC TRANSMISSION

The automatic transmission contains six forward gear ratios, one reverse gear ratio and a torque converter which functions automatically as required. The transmission also contains a hydraulic retarder which can be used to slow down the Wanderlodge and to control speed when descending hills. Any of the forward driving ranges or reverse can be selected by moving the selector lever. The accelerator pedal has a "kick down" position, or "detent". When the accelerator pedal is above the kick down position, the transmission will automatically select the ratio which gives the best performance in the driving range selected. Below the kick down, the transmission will select a ratio and remain in it until the pedal is released.

Selector Lever Positions: "N" (Neutral) Position - the selector lever must be in the "N" position to start the engine. The "N" position should be used during engine warm-up or prolonged idling. "3-Hi" position - this range provides 3rd, 4th, 5th and 6th gear ratios and should be used for all normal driving. For maximum accelerator, hold the accelerator in the full throttle position (before kick down) and the transmission will shift automatically at the maximum engine speed. "3-5" Position - this range provides 3rd, 4th and 5th gear ratios for use in moderate traffic conditions and for efficient retarder action when descending grades at speeds up to 40 mph. CAUTION: Do not downshift into "3-5" range at speeds above 40 mph or when using the hydraulic retarder. "3-4" Position - this range restricts the transmission to 3rd and 4th gears. It should be used for better control in heavy traffic and for descending long grades at speeds up to 30 mph.

CAUTION: Do not downshift into "3-4" range at speeds above 30 mph or when using the hydraulic retarder. "1-2" position - this range restricts the transmission to 1st and 2nd gears. It should be used for very heavy pulling and for ascending and descending extreme grades at speeds up to 15 mph.

CAUTION: Do not downshift into "1-2" range at speeds above 15 mph or when using the hydraulic retarder. DO NOT downshift into 1-2 while in motion on icy roads. "R" (Reverse) Position - this range provides the reverse ratio.

CAUTION: Never move the lever to reverse position when Wanderlodge is moving forward.

Hydraulic Retarder: To slow down the Wanderlodge, push the pedal located at the left of the steering column to the floor. When descending long grades, the hydraulic retarder is most effective at engine speeds of 2500 to 2800 RPM maximum. Corresponding road speeds are approximately: "1-2" - 15 mph; "3-4" - 30 mph; "3-5" - 40 mph. CAUTION: When the hydraulic retarder red warning light goes on, release the retarder pedal until the red light goes out. Do not use retarder as brake assist during city or starting/stop driving.

Towing Wanderlodge: Wanderlodge must be towed with rear wheels off the ground or with drive shaft disconnected at the axle pinion shaft. **NOTE: DO NOT ATTEMPT TO PUSH OR TOW START.**

Servicing:

1. Check oil level every 1,000 miles.
2. The transmission fluid should be drained and the filter element replaced after the first 2,000 - 2,500 miles of operation.

Servicing Continued:

3. Check oil and replace filter every 10,000 miles (or 6 months) under normal stop and go operating conditions or every 25,000 miles of highway service.

a. Oil must be checked with selector level in neutral position, transmission at operating temperatures, engine running at idle and the parking brake set.

b. CAUTION: Be sure brake is set and/or Wanderlodge is blocked when making this check. Exercise extreme care to prevent dirt from entering filler tube when checking oil level or changing oil.

Use Dexron automatic transmission fluid.

G. INSTRUMENTS AND SWITCHES

Your Wanderlodge may be equipped with many switches and devices which make it appear complicated to operate. ~~THIS IS NOT THE CASE.~~ The following is a list of operating switches and instruments for the Wanderlodge in addition to the normal chassis instruments. They are as simple as the switches on your automobile and will afford you comfort and pleasure while traveling. Some of the switches are located on the instrument panel above the driver and some are located on the dash.

1. Hour Meter:

To record accumulated service hours on power generator (located on dash)

2. Volt Meter (AC):

To register voltage output of power plant or voltage output of commercial power supply. (Located above refrigerator.)

3. Battery Condition Meter:

Voltmeter to check condition of 12 volt chassis battery. Operates when ignition switch is on.

4. Water & Holding Tank Gauge: (Located above refrigerator)

Press switch to check levels. Water tank level is shown on gauge. Light is activated when holding tank reaches 3/4 full. This panel also includes water pump switch and pilot light. This switch should remain in the on position when coach is in use. Pilot light will come on only when pump is running.

5. Heater Switches (five):

Located on panel above driver.

- a. Left heater (Drivers Heat)
- b. Defog
- c. Right Heater
- d. Rear heat master
- e. Rear heat master

The rear heater switches are master cut-off switches. A switch for each rear heater is located near the heater. All heaters have two speed switches. The first click makes the fan in the heater run at low speed. Pulling the switch out to the second click makes the fan motor run at high speed.

G. INSTRUMENTS AND SWITCHES CONTINUED:

6. Power Plant Indicator Light:
The Power Plant Indicator Light is located near the hour meter. It is only on when the power plant is running.
7. Generator Starter Switch:
Located on dash. This is the remote start toggle switch for the electric power plant. For further instruction see Section IV, A. Electric Power Plant for these instructions.
8. Map Light:
To illuminate 12 volt instrument panel above windshield & map reading.
9. Marker/Identification:
Located above driver. This switch turns on marker and cluster lights.
10. Flasher Switch:
Located on steering column. The flasher switch will make all directional signals flash simultaneously. Its recommended use is when stopping in traveled areas.
11. Transmission Indicator Light:
This is a Red pilot light located to the left of the instruments. Should this light flash red, stop immediately. This light comes on only when the transmission is overheating. Check the cause of overheating, the fluid level in the transmission and the water level in the main engine radiator. If these are both satisfactory, allow time for fluid to cool. It could have been caused by extended use of retarder.
12. 12 Volt Battery Jumper Button:
The 12 volt system has a built-in jumper from the positive pole of the chassis battery to the positive pole of the generator battery. This system goes through a solenoid which is activated by a push button located on the steering column support bracket. By pressing this button, you are putting the two batteries in parallel and thereby jumping to the chassis battery from the generator battery. This is for starting purposes only.
13. Water Pump Master:
Located above the driver. Used to cut-off power to the water pump and tank gauges.
14. LPG Gauge:
Located on dash. Operates when ignition switch is on.

H. SEATS IN THE DRIVER'S AREA:

The driver's seat is designed for six-way adjustment (including swivel). The companion seat has four adjustments (including swivel).

II. HEAT SYSTEM:

A. CHASSIS HEAT SYSTEM:

The Blue Bird Wanderlodge is equipped with an 85,000 BTU heater at the front right hand corner and three rear heaters; underneath the front dinette seat; front sofa and the curb side bed. These heaters use the chassis engine hot water as a heat source. All of these heaters are equipped with automatic air removers, but to insure maximum heat, we recommend bleeding the heaters periodically. This is recommended when air pockets have built up in the heater core. The bleeder for the heater system is located in the right front section under the hood.

The front heater is equipped with three large squirrel cage blowers which are controlled from the driver's instrument panel. One blower is used for de-fogging, one blower is used for the driver and one blower for the right side of the unit. All three of these blowers are two-speed.

The rear heaters are controlled from master switches in driver's instrument panel plus each heater has a separate two speed control switch located near the heater.

The Wanderlodge chassis heating system is equipped with five valves to stop the circulation of engine hot water through the heater cores. One valve is located in the toe space ahead of the companion seat. Four valves are located under the engine hood or the floor on the left side of the engine. All function like the water valves in your home. For summertime driving, close the valves on the heater water hoses. The valves should be opened in winter. The coolant level in the radiator should be checked after these valves have been opened. If the liquid in the heater lines has evaporated during the summer, the radiator will lack sufficient coolant and may overheat.

B. LP GAS FURNACE

Your Wanderlodge is equipped with an LPG forced air heating system. This furnace located under the kitchen counter, has ducts to carry this warm air forward and aft. The warm air is moved with a 12 volt blower. Follow the instructions on the furnace.

III. WATER SYSTEM:

A. ON-BOARD WATER SYSTEM:

Your Blue Bird Wanderlodge has a 60 gallon galvanized steel water storage tank (with approved liner) located under the curb-side rear bed. You may use water from this tank or from commercial sources. The on-board water system has a 12 volt water pump and will operate while the vehicle is in motion or stationary.

When using the on-board water, you will hear a slight noise at the rear of the vehicle. This is the water pump and it will automatically stop and start as you open the faucet to use water. Always leave the water pump switch in the "ON" position unless you are connected to commercial water sources or will be away for an extended period. Your water storage tank has a drain valve at the rear of the tank. You have two hose connections on the rear of the coach. The street side one marked "Commercial Water. The curb side marked "Fill Tank", is for filling your water tank. When filling the tank, remove the cap from the overflow outlet on rear of coach. The tank is completely full when the water comes out of this outlet. This outlet may also be used for filling with a bucket or hose, when a hose with fitting is not available.

A. ON-BOARD WATER SYSTEM CONTINUED....

CAUTION: The water Storage Tank is the non-pressure type. Shut off water supply immediately when tank is full to avoid over pressure & possible damage to the tank.

B. COMMERCIAL WATER SYSTEM:

By attaching a hose to the connection marked "Commercial Water", you will by-pass the on-board water system, using the pressure of the commercial water rather than your 12 volt pump. There is a check valve between this connection and the water tank.

C. DRAINING THE WATER SYSTEM:

To completely drain the water system, open all four drain valves (one under right side bed, in the end of the tank, one in water line behind check valve near water tank, two in bathroom cabinet) and all faucets. Then with blow out plug installed on "Commercial Water" hose connection, put air pressure to system.

CAUTION: Be certain that all valves and faucets are open as you could damage water system with too much air pressure.

IV. ELECTRICAL SYSTEM

Your Blue Bird Wanderlodge has two electrical systems. One is a 12 volt system which utilizes the chassis battery for power with the aid of an automatic battery charger-converter and the other is a 110 volt system which may use generated power or commercial power. There is a selector switch located in the rear closet below the main circuit breaker switch panel. This switch can be placed in any of three positions: 1. Generator, 2. Shore or 3. Off. Place switch in position to match power source.

A. THE ELECTRIC POWER PLANT:

Refer to the operators manual for detailed operating instructions. The electric power plant can be started from the inside or outside of the vehicle. To start the generator, first turn all appliance switches (110 volt air conditioners and electric hot water heaters) to the "OFF" position and place change over switch located in rear closet in Generator position. One starter switch is located on the dash and one is located on the power plant. Push the starter switch to the "ON" position and hold until the power plant starts. This switch should be held in this position for at least 15 seconds even if you do not hear the starting noise. It may be released as soon as you hear the power plant running. To stop the power plant, hold the switch in the "OFF" position until the power plant is completely stopped. Before stopping the power plant, shut off all major appliances.

B. COMMERCIAL POWER:

For commercial power, your Wanderlodge is equipped with two 25' shore lines. For 220 volt power you have a larger #8 - 4 cable. For 110 volt, you have a smaller #12 - 3 cable. (The preceding sentence does not apply to coaches titled in California.)

To use commercial power, first turn all appliances switches to the "OFF" position. Connect the proper shoreline to the Wanderlodge receptacle located in the rear adjacent to the street-side tail light and place change over switch located in rear closet in shore position.

B. COMMERCIAL POWER CONTINUED....

If 110/220 volt power is available, you may connect directly to this source with the larger (8-3) shore line. *If 110 volts is the only source available, use the smaller (12-3) shore line and connect to 110 volt power source.

IMPORTANT: Your Wanderlodge has been wired according to the National Electrical Code. All 110 volt wiring is a two-wire service with ground and all 220 volt is a three-wire service with ground. If you connect to a system which has only a two-wire circuit, ground the third wire on the adapter which you have to use.

*IMPORTANT: A 110 volt commercial outlet will not operate all the electrical equipment in your Wanderlodge. You may operate only one air conditioner or the electric hot water heater. If you overload this circuit, you may blow a fuse in the commercial power circuit.

C. THE 12 VOLT SYSTEM:

The 12 volt system is connected to the chassis battery. This 12 volt system is used to operate the water pump, exhaust fans, radio, stereo and all lights.

This system incorporates a completely automatic battery charger/power supply which is powered by 110 volt (either commercial or generator). It will charge your chassis battery automatically as it needs it, supply power for various 12 volt appliances or, if not needed, will shut itself off.

CAUTION: When using battery power for lights and furnace or other 12 volt fixtures, battery condition should be checked periodically.

V. PLUMBING

A. DRAINING THE HOLDING TANK:

To drain the holding tank, first remove the safety plug from the end of the drain valve by turning the lock ring counterclockwise. Insert the 3" sewer hose coupling into this valve and tighten the lock ring, then place the discharge end into a sewer fitting. Open the drain valve by turning the handle to the left (counterclockwise) and pull the valve stem out. This will discharge the holding tank.

To clean the holding tank, add a cup of detergent into the holding tank after emptying it. The agitating action of the vehicle while traveling will clean the tank.

DRAIN YOUR HOLDING TANK OFTEN. DO NOT ALLOW THE HOLDING TANK TO OVERFLOW.

VI. APPLIANCES

A. AIR CONDITIONERS:

1. Electric

There are two roof mounted 110 volt powered air conditioners. There is a "Hi" and "Lo" fan for air circulation, and a "Hi Cool" and "Lo Cool" with desired thermostat setting for cooling.

*Does not apply to coaches titled in California.

1. Electric Continued....

Since all air conditioner units have their maximum amperage draw on the starting cycle, these two units should never be started simultaneously. The compressor will not start again immediately after it is shut off. Allow unit to remain off 5 minutes before attempting to restart compressor.

Your air conditioners will remove moisture from the air. The moisture that is not dissipated will discharge on top of the coach. This removal of moisture will, of course, lower the humidity and increase the effectiveness of the air conditioners.

2. Chassis Air Conditioner

The chassis air conditioner system is quite like that used in an automobile, except that this system has more output. Each of the two air handling units above the windshield has its own three speed 12 volt blower. These blowers can be used for defogging without energizing the cooling system by placing the thermostat control in the "OFF" position. The controls are located below the dashboard.

This unit also removes moisture from the air. This is drained through tubes in the corner windshield posts.

B. HOT WATER HEATER:

The 110 volt electric hot water heater in the water system is controlled by a circuit breaker in the rear closet. The hot water heater can be turned "ON" or "OFF" while driving. However, the power generator should not be started with the heater on. CAUTION: Do not turn the hot water heater on unless you have an ample supply of water in the tank.

C. RANGE AND OVEN:

The range and oven on the Blue Bird Wanderlodge is controlled by pilot lights. Refer to the instruction sheet supplied with the stove for detailed instructions.

D. REFRIGERATOR:

Refer to the instruction plate mounted on the refrigerator.

E. DINETTE:

To make a bed out of your dinette, fold up the leg on the table by pulling the spring collar down and fold the leg up. Remove the table from the wall brackets and lower the table to rest on the edges of the dinette seats. Remove the dinette seat back by lifting upward and outward. The dinette back cushions and dinette seat cushions together will make a bed.

F. SOFA BED:

To make a bed out of the sofa, lower the legs on the front parts of the sofa platform. This is the same type leg as the dinette. Slide out the seat panel of the sofa until the back is unfolded. To convert back to a sofa, lift the back panel while pushing the seat panel. This will start the hinge action and allow the seat panel to slide easily into place.

G. LPG OPERATION:

The LPG tank is permanently mounted and is equipped with quick fill connections and a gauge which is mounted on the drivers' dash.

WINTERIZING THE WANDERLODGE

1. Check anti-freeze in chassis engine cooling system.
2. Check your batteries for capacity and filling.
3. Make certain your oil and lubricants are "winter weight"
4. Check heater and defroster system (Sec. II,a)

WHEN WANDERLODGE IS NOT IN USE

1. Check to see emergency brake is tight
2. Shut off water pump master switch
3. Shut off all other 12 volt accessories
4. Close valve on LPG tank
5. Drain water tank
6. Drain hot and cold water lines (cold weather) or plug in 110 volt power so thermostatically controlled heat tape will operate
7. Leave refrigerator door open
8. Shut all windows and vents
9. Remove keys and lock entrance door.

BEFORE YOU TRAVEL

1. Put the entrance step in the travel position
2. Secure loose items inside the unit
3. Disconnect all service lines and stow them away
4. Insure all drawers and doors are in the closed position
5. Turn the LPG furnace "OFF"
6. Check the lighting system both inside and outside
7. Check the tire inflation and oil
8. Lock door and dead bolt
9. Release the emergency brake
10. HAPPY WANDERLODGING!!!

C A P A C I T I E S

| | <u>GMC</u> | <u>CHEVROLET</u> | <u>FORD</u> | <u>ONAN</u> |
|---|-----------------------------------|------------------|------------------|-------------------------|
| FUEL - Regular | 115 | 115 | 115 | From Tank of Chassis |
| COOLING SYSTEM & FRONT HEATER (Qts.) | 40.9 | 30.4 | 32.9 | Air cooled |
| W/Rear Heating System Qts. | 55.1 | 44.6 | 47.1 | |
| CRANKCASE Capacity (Qts.) | | | | |
| (Dry) | 11 | 7 3/4 | 9 | |
| (Refill) | 9 | 6 | 8 | |
| WEIGHT 30°F-100°F | SAE 30 | SAE 30 | SAE 30 or 20W-40 | SAE 30 |
| 0°F- 30°F | SAE 10W | SAE 10W | SAE 20 or 10W-30 | SAE 10W |
| SPECIFICATION (API) | DG or MS/DG | DG or MS/DG | MS | MS or MS/DG |
| TRANSMISSION | | | | |
| 5-Speed | 12 Pints | 10 Pints | 13 Pints | |
| Allison | 19 Quarts | 19 Quarts | 19 Quarts | |
| TIRES | | | | |
| Recommended | 9:00 x 20 - 10 Ply - Dual Rear | - 70# | | |
| Pressure | 9:00 x 20 - 12 Ply - Single Front | - 95# | | |

C A P A C I T I E S

| | <u>GMC</u> | <u>CHEVROLET</u> | <u>FORD</u> | <u>ONAN</u> |
|---|-----------------------------------|------------------|------------------|-------------------------|
| FUEL - Regular | 115 | 115 | 115 | From Tank of Chassis |
| COOLING SYSTEM & FRONT HEATER (Qts.) | 40.9 | 30.4 | 32.9 | Air cooled |
| W/Rear Heating System Qts. | 55.1 | 44.6 | 47.1 | |
| CRANKCASE Capacity (Qts.) (Dry) | 11 | 7 3/4 | 9 | |
| (Refill) | 9 | 6 | 8 | |
| WEIGHT 30°F-100°F | SAE 30 | SAE 30 | SAE 30 or 20W-40 | SAE 30 |
| 0°F- 30°F | SAE 10W | SAE 10W | SAE 20 or 10W-30 | SAE 10W |
| SPECIFICATION (API) | DG or MS/DG | DG or MS/DG | MS | MS or MS/DG |
| TRANSMISSION | | | | |
| 5-Speed | 12 Pints | 10 Pints | 13 Pints | |
| Allison | 19 Quarts | 19 Quarts | 19 Quarts | |
| TIRES | | | | |
| Recommended | 9:00 x 20 - 14 Ply - Dual Rear | - 95# | | |
| Pressure | 9:00 x 20 - 14 Ply - Single Front | - 100# | | |

NORMAL CURRENT DRAW FOR 12 VOLT EQUIPMENT

| <u>SWITCH</u> | <u>NO. ITEMS</u> | <u>AMPS</u> |
|--|-------------------------|-------------|
| Marker/Identification Lamps . | 16 | 9.6 |
| Stop Lamps | 4 | 7.2 |
| Parking Lamps | 4 | 2.1 |
| Head Lamps (Low Beam) | 4 - Includes tail lamps | 9.2 |
| Head Lamps (High Beam) | 6 - Includes tail lamps | 13.4 |
| Ignition | 1 | 2.5 |
| Instrument Panel | 1 | 1.0 |
| Stepwell/Outside | 2 | 2.5 |
| Blowers-Heater High/Low | 1 | 9.0/4.5 |
| Defroster High/Low | 1 | 9.0/4.5 |
| Foot Warmer High/Low | 1 | 9.0/4.5 |
| Windshield Wipers | 2 | 8.0 |
| Back-Up | 2 | 4.2 |
| Front Living Area | 6 | 7.8 |
| Bathroom | 1 | 1.3 |
| Shower | 1 | 1.0 |
| Dinette | 2 | 2.6 |
| Kitchen | 1 | 1.3 |
| Bedroom | 4 | 5.2 |
| Water Pump (Intermittent) | 1 | 6.2 |
| Rear Heaters High/Low (Each Heater) | 1 | 9.0/4.5 |
| L.P. Furnace Blower | 1 | 7.3 |
| Ceiling Vent | 1 | 4.0 |
| Stereo System | 1 | 2.0 |
| Reading | 7 | 1.7 each |



NORMAL CURRENT DRAW FOR 12 VOLT EQUIPMENT

| SWITCH | NO. ITEMS | AMPS |
|--|-------------------------|----------|
| Marker/Identification Lamps | 16 | 9.6 |
| Stop Lamps | 4 | 7.2 |
| Parking Lamps | 4 | 2.1 |
| Head Lamps (Low Beam) | 4 - Includes tail lamps | 9.2 |
| Head Lamps (High Beam) | 6 - Includes tail lamps | 13.4 |
| Ignition | 1 | 2.5 |
| Instrument Panel | 1 | 1.0 |
| Stepwell/Outside | 2 | 2.5 |
| Blowers-Heater High/Low | 1 | 9.0/4.5 |
| Defroster High/Low | 1 | 9.0/4.5 |
| Foot Warmer High/Low | 1 | 9.0/4.5 |
| Windshield Wipers | 2 | 8.0 |
| Back-Up | 2 | 4.2 |
| Front Living Area | 6 | 7.8 |
| Bathroom | 1 | 1.3 |
| Shower | 1 | 1.0 |
| Dinette | 2 | 2.6 |
| Kitchen | 1 | 1.3 |
| Bedroom | 4 | 5.2 |
| Water Pump (Intermittent) | 1 | 6.2 |
| Rear Heaters High/Low (Each Heater) | 1 | 9.0/4.5 |
| L.P. Furnace Blower | 1 | 7.3 |
| Ceiling Vent | 1 | 4.0 |
| Stereo System | 1 | 2.0 |
| Reading | 7 | 1.7 each |

BLUE BIRD FORWARD CONTROL COACH



1973

Original

edition

1.

BLUE BIRD FORWARD CONTROL COACH

OPERATOR'S MANUAL

Introduction

This manual has been prepared to acquaint you with the operation of the Blue Bird Forward Control Coach. This manual will explain the various controls and safety features. To obtain maintenance and parts information, refer to the "Maintenance Manual and Parts Catalog for the Blue Bird Chassis" and the "Forward Control Body Parts Book".

Some of the equipment referred to in this manual is optional and possibly not on your coach.

Convenience Features

The DRIVER'S SEAT is adjustable six ways. To adjust the height, loosen the lock on right side and release pedal in front. Retighten lock on right side when desired height is reached. Fore-and aft adjustments are made by pulling "L" shaped rod on right side under cushion and sliding seat to desired position. The back is adjustable by releasing knob rear of seat cushion.

The DRIVER'S FRESH AIR VENTILATOR is located right of the steering column under the dash. Push to open and pull to close.

The HEATER SWITCHES are located in the switch panel under the driver's window. The fresh air control for the front heater is located on the front inside center panel left of the hood hinges. Twist to open and twist to close.

The WINDSHIELD WIPER AND WASHER CONTROLS are located on the switch panel under the driver's window.

The POWER DOOR AND STOPARM CONTROLS are located under the driver's window.

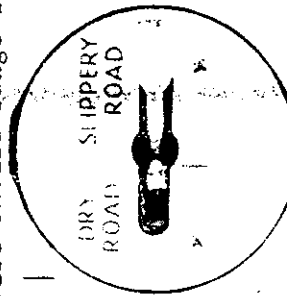
The MARKER LIGHT AND DEFROSTER FAN SWITCHES are located in the switch panel under the driver's window.

Operating Instructions

Brakes, Transmissions, Rear Axles.
And Cold Start Aid

The DUAL HYDRAULIC BRAKE SYSTEM assures the driver of brake control if a malfunction occurs in the system. The driver should realize that if a malfunction occurs, the brake pedal must be applied with more pressure to stop the coach with one brake system not performing properly. The brake warning light is located right of the speedometer and will illuminate in the event of a malfunction.

The AIR BRAKE SYSTEM is equipped with a pressure gauge and warning buzzer. After starting the engine, wait until the compressor builds at least 60 PSI of air pressure before moving the coach. The warning buzzer will operate if the air pressure in the system falls below 60 PSI. While operating the pressure should range from 90 PSI to 105 PSI.



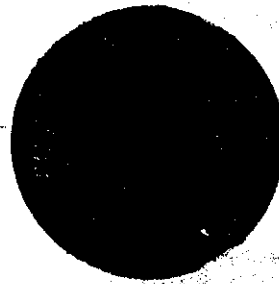
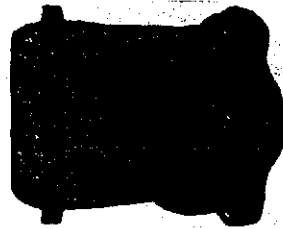
The FRONT WHEEL LIMITING VALVE is furnished as an option and is mounted on the dash. It is designed to reduce the air pressure to the front wheels when operating on slippery roads. Placing the lever in the "Slippery Road" position will reduce the air pressure to the front brakes so that the front wheels will have less tendency to slide when the lever is in the "Dry Road" position under normal operating conditions.

Operating Instructions
Brakes, Transmissions, Rear Axles,
And Cold Start Aid (Cont.)

DRAINING AIR TANKS. Condensation must be drained from all air tanks daily. To drain tanks properly, leave cocks open until all air escapes and draining stops. NOTE: Daily draining is not required on units equipped with automatic drain valves.



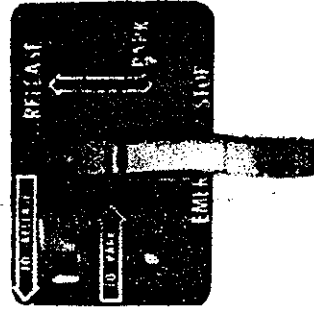
The AIR RESERVOIR DRAIN VALVE is furnished as an option and is mounted on the dash. Drain moisture from tanks daily by pressing and releasing reservoir drain knob.



The MAXI-BRAKE CONTROLS, mounted on the dash as shown, provide the driver with parking and emergency air brakes. For parking or emergency use, push the knob on the left control. This will apply the brakes on the rear axle. To release the brakes on the rear axle, pull out the knob on the left control. In the event of a malfunction in the service air brake system and a loss of air pressure occurs, springs located in the rear axle brake chambers mechanically apply the brakes automatically. Do Not Attempt To Move the Coach Under This Condition.

Operating Instructions
Brakes, Transmissions, Rear Axles,
And Cold Start Aid (Cont.)

In order to release these brakes, push the release knob on the right control and pull out the knob on the left control. This will supply sufficient reserved air pressure to only release the brakes. When this reserved air pressure has been depleted, the brakes will automatically be reapplied and cannot be released until this reserved air pressure has been replaced.



The MODULATED MAXI-BRAKE CONTROL, mounted on the dash, provides the driver with a manual lever type control that may be used in the same manner as the foot treadle valve. To use the parking brake feature, press the lever down and slide the lever lock to the right to lock the lever in the down position. To release the parking brake, press the lever down slightly and slide the lock to the left and gradually move the lever to the release position. Do not damage the lever by letting it snap to the return position. Do not force the lever without disengaging the lock. **TO ACTUATE EMERGENCY BRAKES DUE TO LOSS OF AIR PRESSURE, THE LEVER MUST BE PRESSED DOWN MANUALLY.** This will supply sufficient reserved air pressure to apply the emergency brakes. To release these brakes, return the control lever to the release position. When this reserved air pressure has been depleted, the brakes cannot be released until this reserved air pressure has been replaced.

Operating Instructions

Brakes, Transmissions, Rear Axles,
And Cold Start Air (Cont.)

A MANUALLY OPERATED HAND BRAKE LEVER is located on the floor and to the left of the driver. It is an over-center, locking type mechanism. It is equipped with an adjustment knob on the upper end and when turned in a clockwise rotation, it can be tightened to compensate for a slight amount of wear. Tighten only when the lever is in the released position. Care should be exercised so as to not over-tighten. When properly adjusted, an audible click can be heard as the lever is pulled over-center.

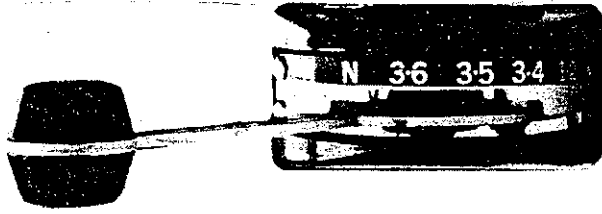
The STANDARD TRANSMISSIONS used in the forward control coach are five speed Synchro-Mesh units. Refer to the dash mounted gearshift plate for proper shift sequence.

The AT 540 and MT 640, ALLISON TRANSMISSIONS provide four forward speeds and one reverse. Selective control is obtained through the selector lever located on the tower right of the driver. The AT 540, and MT 640 transmissions are not equipped with a retarder. The selector lever must be in "N" (neutral) to start the engine.

Automatic shifts occur in all of the forward driving ranges. The AT 540, and MT 640 transmissions are equipped to prevent downshifts or reverse shift unless coach speed is within acceptable range.



Operating Instructions
Brakes, Transmissions, Rear Axles
And Cold Start Air (Cont.)



The MT 40 SERIES ALLISON TRANSMISSION provides six forward driving speeds selective control is obtained through the selector lever located on the tower right of the driver. The hydraulic retarder is operated by the foot pedal left of the steering column. The selector lever must be in "N" (neutral) to start the engine. Place the selector lever in "N" when the coach is parked with engine running. Use "3-6" (1st drive range) for normal driving. Use "3-5" (2nd drive range) for better control in light traffic and use with the hydraulic retarder when descending normal grades. Use "3-4" (intermediate range) for heavy traffic and ascending long grades and with the hydraulic retarder when descending long grades. Use "1-2" (low range) for starting heavy loads; pulling through mud, sand, or snow; up steep grades; down steep grades; or other extreme conditions. Use "R" (reverse) to back-up. Coach must come to a complete stop with engine idling before moving selector to "R".

Automatic shifts occur in all of the forward driving ranges. With light accelerator pressure, shifts occur at lower speeds. With heavy accelerator pressure, shifts occur at higher speeds. For passing speed, depress the accelerator pedal through the full throttle detent. The transmission will downshift to a lower ratio and will not return to a higher ratio until the accelerator returns through the detent. The depressed accelerator will prevent the transmission from upshifting.

Operating Instructions
Brakes, Transmissions, Rear Axles,
And Cold Start Aid (Cont.)

Do not downshift from: "3-6" to "3-5" at speeds over 40 mph; "3-6" or "3-5" to "3-4" at speeds over 30 mph; "3-6" or "3-5" or "3-4" to "1-2" at speeds over 15 mph. Do not downshift with retarder in operation. Use caution when downshifting on slippery roads.

Use of the hydraulic retarder relieves the service brakes on downhill grades by dynamically controlling the descent of the coach. Apply the retarder by depressing the foot pedal. The hydraulic retarder may be applied at any range, however; it operates most effectively in the "3-4" and "1-2" positions - at engine speeds in excess of 2500 rpm.

CAUTION: Do not use the retarder as a substitute for the service brakes. It is designed only to assist the service brakes from excessive use and wear during long downhill braking.

A high temperature warning light is located on the instrument panel, to the left of the speedometer head. It's function is to warn the driver when the transmission temperature becomes too high (380° Fahrenheit and above) during retarder operation. Should the warning light come on, release the retarder pedal until the fluid temperature returns to normal, at which time the light will go out.

The warning light should be checked each time the engine is started. The light will come on when the ignition switch is turned on and it will go out when the engine has been started.

Operating Instructions
Brakes, Transmissions, Rear Axles,
And Cold Start Aid (Cont.)

TOWING: Never tow a vehicle equipped with an Allison automatic transmission, until the rear drive shaft has been moved, or, unless the rear wheels have been raised off the ground.

The TWO-SPEED AXLE switch is located on the gearshift lever right of the driver. There is not a neutral position for a two-speed axle. It is either in low range or high range. The knob on the switch is pulled up for high range operation or pushed down for low range operation. The coach should be parked with the axle in low range. To start the coach from a standstill, put the axle in low range and start in first gear. After gaining speed, the axle can be shifted to high range. Depress the accelerator and pull the switch knob up. Release the accelerator pedal until the axle shifts, then accelerate as needed. To shift the axle to low range while in motion, depress the accelerator and push the switch knob in. Disengage and engage to clutch to allow the axle to shift.



the accelerator and pull the switch knob up. Release the accelerator pedal until the axle shifts, then accelerate as needed. To shift the axle to low range while in motion, depress the accelerator and push the switch knob in. Disengage and engage to clutch to allow the axle to shift.

Operating Instructions
Brakes, Transmissions, Rear Axles,
And Cold Start Aid (Cont.)

The COLD START AID is designated as an aid to start the diesel engine in temperatures below freezing. This cold start aid utilizes a pressurized cylinder of Ethyl Ether which is injected into the intake manifold on the engine. The ether may be injected prior to cranking. To operate, press button for one second and release. Wait two seconds and engage starter. For temperatures below zero, repeat the above steps. Use the aid only for starting.

MAINTENANCE MANUAL AND PARTS CATALOG

BLUE BIRD CUSTOM BUILT CHASSIS



THIS MANUAL IS ESPECIALLY PREPARED FOR: HENRY S. TAYLOR
Delray Beach, Florida

BODY NUMBER: F 0 9 9 9 0 (1970)

CHASSIS SERIAL NUMBER: 4566

BLUE BIRD BODY COMPANY

FORT VALLEY, GEORGIA
BRANTFORD, ONTARIO

MOUNT PLEASANT, IOWA
GUATEMALA CITY, GUATEMALA

FAMILY MOTOR COACHING



VOLUME 5

1968

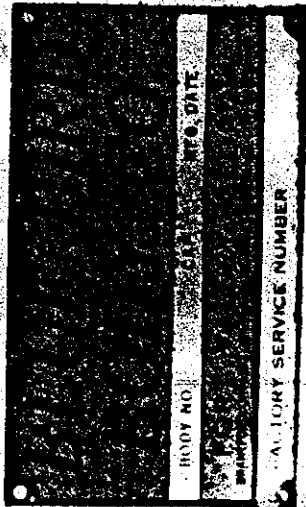
ISSUE 3

THE WANDERLODGE STORY

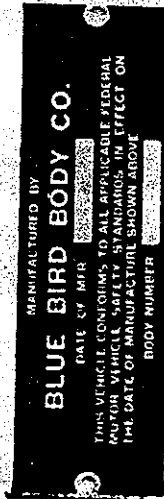
CONVENTION REVIEW

BLUE BIRD FORWARD CONTROL COACH OPERATOR'S MANUAL

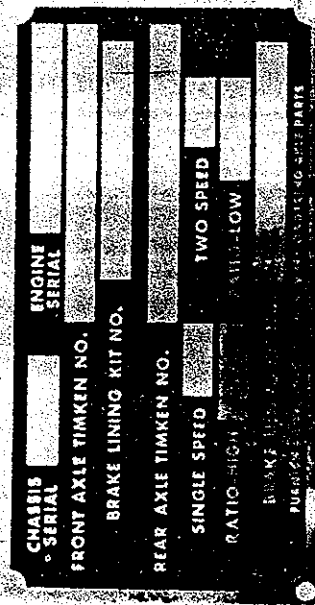
Coach Identification



The BODY SERIAL NUMBER AND FACTORY SERVICE NUMBER PLATES are located on the front upper inner panel. Refer to the data on these plates for registration purposes or for replacement part information.



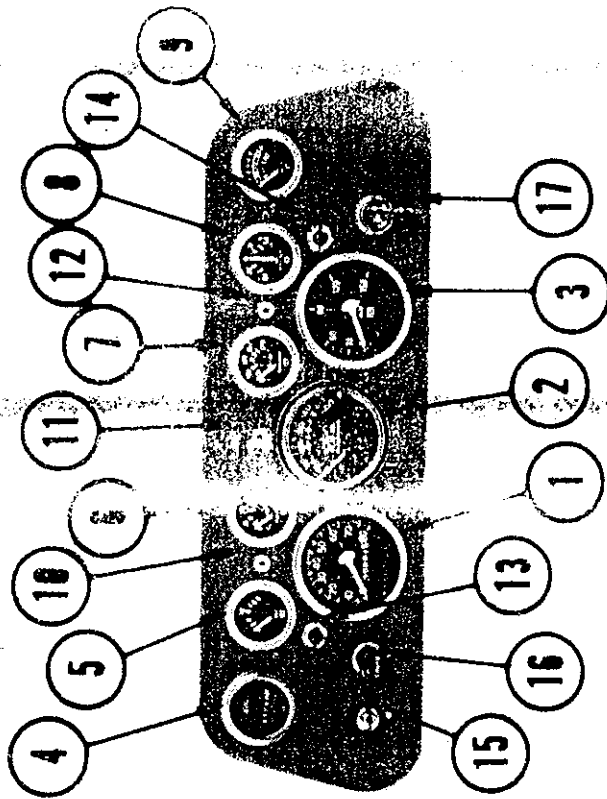
The VEHICLE CERTIFICATION PLATE certifies that the vehicle conforms to all applicable Federal Motor Vehicle Safety Standards in effect at the date of manufacture. Do not remove or deface this plate.



The AXLE RECORD PLATE is located on the front inside center panel above the engine hood. Refer to the data on this plate for registration purposes or for replacement part information.

Instrument Panel and Controls

The INSTRUMENT PANEL AND CONTROLS shown below are the locations for both the standard and optional instruments and controls. You can identify the ones on your coach from the panels on pages 3 and 4.



1. Speedometer and Odometer
2. Tachometer
3. Air Pressure or Vacuum Gauge
4. Hour meter
5. Fuel Gauge
6. Oil Pressure
7. Water Temperature
8. Ammeter
9. Volt Meter
10. Left Turn Indicator
11. High Beam Indicator
12. Right Turn Indicator
13. Allison High Temperature Warning Light (MF Series only)
14. Brake Warning Light
15. Cold Start Aid Button
16. Light Switch
17. Ignition Switch

Safety Features

The DRIVER'S SEA BELT provides security for the operator when worn and properly adjusted. Belt can be cleaned with a mild soap solution and water.

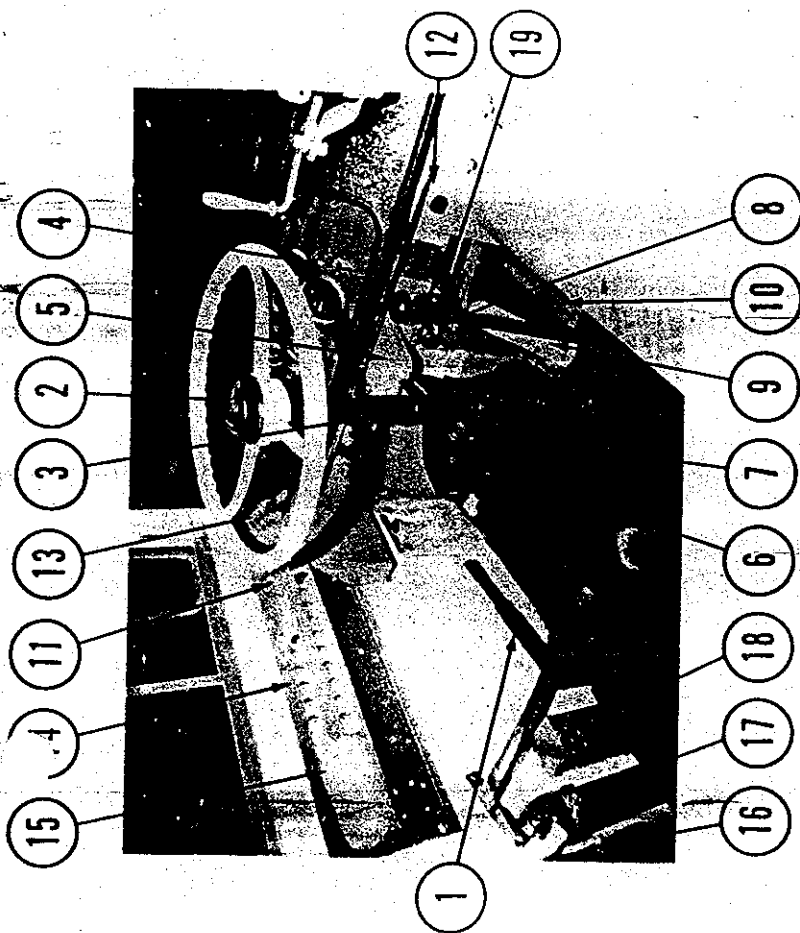
The BRAKE WARNING LIGHT is located right of the speedometer on coaches equipped with vacuum over hydraulic brakes. This warning light will operate if a malfunction occurs in the brake system.

If the warning light should come on, the coach should be stopped and the malfunction repaired.

The DIRECTIONAL SWITCH LEVER is located on the left side of the steering column under the steering wheel. To signal a left turn, the switch lever is pulled toward the driver. To signal a right turn, the switch lever is pushed away from the driver. Directional signal pilot lights are located on the instrument panel.

The HAZARD SIGNAL SWITCH is located on the lower right hand side of the dash next to the steering column. This signal should be used if the coach is disabled. Do not operate the coach with the hazard signal flashing.

The FIRST AID KIT, FIRE EXTINGUISHER, FLAGS AND FLARES are located in the driver's area. Always assure that these items are in good condition in the event they are needed.



1. Hand Brake Lever
2. Horn
3. Choke
4. Instrument Panel
5. Throttle
6. Dimmer Switch
7. Clutch Pedal or Retarder Pedal
8. Driver's Fresh Air Ventilator
9. Brake Pedal or Air Treadle
10. Accelerator
11. Windshield Wiper and Washer Switches
12. Fresh Air Control for Front Heater
13. Driver's Window Defroster
14. Instrument Panel
15. Driver's Arm Rest
16. Fuses Canister
17. Fire Extinguisher
18. Reflector Flares and Flags
19. Hazard Signal Switch

619 448 3804

BLUE BIRD
wanderlodge
FORT VALLEY, GEORGIA



OWNER'S MANUAL

CONTENTS

- I. INSTRUCTION BOOK
- II. SUMMARY OF WARRANTY
Blue Bird Warranty
- III. PLUMBING
10 Gallon Electric Hot Water Heater
Monomatic Chemical Toilet
OR
Townsend Model 840 Marine Toilet
Peters & Russell Pressure Water System
- IV. HEATING & COOLING
Suburban Forced Air Furnace
Duo-Therm
- V. APPLIANCES
Magic Chef
- VI. GENERATOR
Onan
- VII. GENERAL
Craig Stereo
Tape Catalog
- VIII. FMCA
Ken Scott Letter
Family Motor Coaching
- IX. MAINTENANCE MANUALS
(These are included with, but not in owner's manual)
All American Chassis
Ford Motor
Ford Motor Parts List

BLUE BIRD
wanderlodge[®]
FORT VALLEY, GEORGIA

SUMMARY OF WARRANTY

A. CHASSIS

The Blue Bird Chassis is warranted for 12,000 miles or 12 months. This applies to all parts except tires which carry the warranty of the respective manufacturer. Service on the chassis may be obtained from an authorized agency of the manufacturer, that is, Ford, Chevrolet or GMC.

Manufacturer: Blue Bird Body Company

B. BODY

The body is warranted for 12,000 miles or 12 months with the exception of purchased parts (lights, switches, etc. which are warranted for 90 days.)

Manufacturer: Blue Bird Body Company

C. POWER GENERATOR

The power generator is warranted free from defects in material and workmanship for one year. For service consult Parts Service Catalog for authorized factory trained service personnel.

Manufacturer: Onan Division of Studebaker
2515 University Avenue, N.E.
Minneapolis, Minnesota

D. REFRIGERATOR

The refrigerator is warranted free from defects in material and workmanship for 12 months.

Manufacturer: Instamatic Corporation
530 McDonald Street
Elkhart, Indiana

E. HOT WATER HEATER

The hot water heater is warranted to be free from defects for one year. This warranty applies to parts only and not to labor.

Manufacturer: Hemco, Inc.
Bowen Division
Wixom, Michigan

BLUE BIRD
wanderlodge[®]
FORT VALLEY, GEORGIA

F. KITCHEN RANGE

The kitchen range is warranted to be free from defects and workmanship for a period of 90 days. This warranty is for parts only and does not include labor charges.

Manufacturer: Magic Chef Inc.
Pan Pacific Division Chateau
245 N. Vineland
City of Industry, Calif. 91744

G. AIR CONDITIONERS

The air conditioners are warranted to be free from defects in material and workmanship for a period of one year. This warranty includes parts but does not include labor.

Manufacturer: Duo-Therm
La Grange, Indiana 46761

H. STEREO TAPE PLAYER

Warranty against defects of material and workmanship for 90 days.

Manufacturer: Craig Panorama, Inc.
3412 S. LaCienega Blvd.
Los Angeles, California

I. LPG FURNACE

The LPG furnace is warranted for one year against defects in material and workmanship. Heat exchanger guaranteed not to rust out or burn out for a period of 5 years from date of purchase.

Manufacturer: Suburban Manufacturing Co.
P.O. Box 399
Dayton, Tennessee 37321

BLUE BIRD wanderlodge®

FORT VALLEY, GEORGIA

WANDERLODGE DIVISION

BLUE BIRD BODY COMPANY
FORT VALLEY, GEORGIA

I. CHASSIS SYSTEM

A. TRAVELING:

Before starting on long trips, you should follow the maintenance procedures listed in your Maintenance Manual and Parts Catalogue concerning oil, water lubrications, air pressure, etc. Secure all the objects in the Wanderlodge which might fall during transit. Follow the "Check Out" list provided with these instructions.

B. DRIVING:

Driving a Wanderlodge is a matter of becoming familiar with a different type vehicle and learning new driving habits. Wanderlodges are approximately 11 inches wider than the largest automobile. An easy way to judge position is to look out the rear view mirror and keep the left hand side of the Wanderlodge a foot or two from the white center line.

Most of you are familiar with nylon tire "thump" caused by the "balling" of nylon cord when it cools. In the Wanderlodge we have a king sized "Thump". This will "smooth out" in 5 or 6 miles of driving.

Driving the Wanderlodge is much the same as flying an aircraft. Plan ahead for turns and stops. Apply the brakes firmly but gradually. Do not apply them in a constant off and on cycle such as your automobile. This could endanger the passengers comfort in the vehicle, cause loose objects to be displaced, and excessive heat of the brake fluid and lining.

The engine is equipped with a 180° thermostat.

C. EMERGENCY BRAKE:

The emergency brake (Hand Brake) is located on the left hand side of the driver's seat. The brake is "OFF" when the lever is upright and the brake is "ON" when the lever is in the forward position. A red light to the right of the instruments will indicate the brake is on after the ignition is turned on. Adjustment can be made on the emergency brake by turning the end knob clockwise (Right Hand) to tighten the brake, and counterclockwise (Left Hand) to loosen the brake with the brake in "OFF" position.

D. SERVICE BRAKES:

The service brake master cylinders are accessible through an inspection plate in the floor at the base of the driver's seat.

E. PARKING:

To park your Wanderlodge safely, always be sure the emergency brake is in the "ON" position. Park the Wanderlodge level. Use the four-way level mounted on the dash. The small bubble should be inside the lined circle. For extended periods of remaining in one location, you should start the engine periodically to maintain the battery charge. Drain the water tank and cut off the 12-volt water pump if you will be connected to commercial water for an extended period.

F. MICO BRAKE:

To actuate the optional Mico Brake Loc, put lever to "ON" position and depress foot brake with engine running. A buzzer will sound if the foot brake has not been set or the hydraulic pressure is not adequate. To release, use the same sequence, put lever to release position with engine running.

G. AUTOMATIC TRANSMISSION:

The automatic transmission contains six forward gear ratios, one reverse gear ratio, and a torque converter which functions automatically as required. The transmission also contains a hydraulic retarder which can be used to slow down the Wanderlodge and to control speed when descending hills. Any one of four forward driving ranges or reverse can be selected by moving the selector lever. The accelerator pedal has a "kick down" position, or "detent". When the accelerator pedal is above the kick down position, the transmission will automatically select the ratio which gives the best performance in the driving range selected. Below the kick down, the transmission will select a ratio and remain in it until the pedal is released.

Selector Lever Positions: "N" (Neutral) Position - the selector lever must be in the "N" position to start the engine. The "N" position should be used during engine warm-up or prolonged idling. "3-Hi" position - this range provides 3rd, 4th, 5th and 6th gear ratios and should be used for all normal driving. For maximum acceleration, hold the accelerator in the full throttle position (before kick down) and the transmission will shift automatically at the maximum engine speed. "3-5" Position - this range provides 3rd, 4th and 5th gear ratios for use in moderate traffic conditions and for efficient retarder action when descending grades at speeds up to 40 mph. CAUTION: Do not downshift into "3-5" range at speeds above 40 mph. or when using the hydraulic retarder. "3-4" Position - this range restricts the transmission to 3rd and 4th gears. It should be used for better control in heavy traffic and for descending long grades at speeds up to 30 mph.



CAUTION: Do not downshift into "3-4" range at speeds above 30 mph or when using the hydraulic retarder. "1-2" position - this range restricts the transmission to 1st and 2nd gears. It should be used for very heavy pulling and for ascending and descending extreme grades at speeds up to 15 mph. CAUTION: Do not downshift into "1-2" range at speeds above 15 mph or when using the hydraulic retarder. Do not downshift into 1-2 while in motion on icy roads. "R" (Reverse) Position - this range provides the reverse ratio. CAUTION: Never move the lever to reverse position when Wanderlodge is moving forward.

Hydraulic Retarder: To slow down the Wanderlodge, push the pedal located at the left of the steering column to the floor. When descending long grades, the hydraulic retarder is most effective at engine speeds of 2800 to 3400 RPM maximum. Corresponding road speeds are approximately: "1-2" 15 mph; "3-4" 30 mph; "3-5" 40 mph. CAUTION: When the hydraulic retarder red warning light goes on, release the retarder pedal until the red light goes out.

Towing Wanderlodge: Wanderlodge must be towed with rear wheels off the ground or with drive shaft disconnected at the axle pinion shaft. NOTE: DO NOT ATTEMPT TO PUSH OR TOW START.

Servicing:

1. Check oil level every 1000 miles.
2. Change oil and replace filter every 10,000 miles (or 6 months) under normal stop-and-go operating conditions or every 25,000 miles of highway service.
 - a. Oil must be checked with selector lever in neutral position, transmission at operating temperatures, engine running at 1000 RPM and the parking brake set.
 - b. CAUTION: Be sure brake is set and/or Wanderlodge is blocked when making this check. Exercise extreme care to prevent dirt from entering filler tube when checking oil level or changing oil.

Use automatic transmission fluid type "C-2".

H. INSTRUMENTS AND SWITCHES:

Your Wanderlodge may be equipped with many switches and devices which make it appear complicated to operate. THIS IS NOT THE CASE. The following is a list of operating switches and instruments for the Wanderlodge. Some of these are standard equipment and some are used only with the optional equipment. They are as simple as the switches on your automobile and will afford you comfort and pleasure while traveling. All the switches are plainly marked on the instrument panel located above the driver's window on left.

Volt Meter: To register voltage output of power plant or voltage output of commercial power supply.

Battery Condition Meter: To check condition of either 12 volt battery use Toggle Switch as marked.

1. Heater Switches (Top Row)
 - a. Rear Heaters (2)
 - b. Front Heater
 - c. Foot Warmer
 - d. Defroster

The rear heater switches are master cut-off switches. A switch for each rear heater is located near the heater. All heaters have two speed switches. The first click makes the fans in the heater run at low speed. Pulling the switch out to the second click makes the fan motors run at high speed. There is a squirrel cage blower in the kitchen wall controlled by the rear heater master switches. It is designed to circulate warm air under the counter area.

2. Fan Switch

These switches control the 6" fans located on the dash. They, too, are two-speed.

3. Power Plant Indicator Light

The power plant indicator light is located near the hour meter. It is only on when the power plant is running.

4. Starter Switch

This is the remote starter for the electric power plant. For further instruction see Section IV, A. Electric Power Plant of these instructions.

5. Entry Lights

The entry light switch controls the two lights in the driver's area and one in the entrance door step.

6. Instruments Lights

To illuminate 12 volt instrument panel above driver's window.

7. Rear Speaker Switch

The rear speaker switch is an on and off control for the rear speaker of the radio in the bedroom.

8. Flasher Switch

This is located bottom of dash board, next to steering column. The flasher switch will make all directional signals flash simultaneously. Its recommended use is when stopping in traveled areas.

9. Transmission Indicator Light

This is a Red pilot light located to the left of the instruments. Should this light flash red, stop immediately. This light comes on only when the transmission is overheating. Check the cause of overheating, the fluid level in the transmission and the water level in the main engine radiator. If these are both satisfactory, allow time for fluid to cool. It could have been caused by extended use of retarder.

10. 12 Volt Battery Jumper Button

The 12 volt system has a built-in jumper from the positive pole of the chassis battery to the positive pole of the generator battery. This system goes through a solenoid which is activated by a push button located on the steering column support bracket. By pressing this button, you are putting the two batteries in parallel and thereby jumping to the chassis battery from the generator battery. This is for starting purposes only.

11. Marker/Identification

This switch turns on marker and cluster lights.

I. ADJUSTING THE SEATS IN THE DRIVER'S AREA:

The seats in the driver's area are designed for six-way adjustment. To raise the seat, loosen the "L" shaped handle behind the center post and pull the seat up to the desired height. To lower the seat, depress the pedal in front of the post and the seat will automatically lower to one of four positions.

When you have reached the desired height, tighten the "L" handle behind the post. To adjust the seat forward or backward, pull out the knob below the seat cushion on the right hand side. Slide the seat forward or backward to the position you desire. When you have reached the desired position, move the seat enough for the locking mechanism to click. This will lock the seat in position. To tilt the back of the seat, pull out the knob on the right hand side just below the seat back. Tilt the back of the seat to a position you desire. Move the seat enough for the locking mechanism to click.

J. DUAL GAS TANK OPERATION:

If you selected the optional dual gas tanks, these can be controlled from the driver's area. There are three controls for dual gas tanks, these are located on the steering column support bracket.

1. Selector valve.
2. Fuel pump control toggle switch.
3. Gas gauge selector toggle switch.

To use gasoline from the rear tank, pull up selector valve "T" Handle and push the toggle switches back.

To use gasoline from the front tank, push down selector valve "T" Handle and push the toggle switches forward. The optional power plant will always use gasoline from the rear tank when dual tanks are ordered.

II. HEAT SYSTEM

A. CHASSIS HEAT SYSTEM:

The Blue Bird Wanderlodge is equipped with an 85,000 BTU heater at the front right hand corner, and can have optional heaters underneath the front dinette seat; front sofa and the curb side bed. These heaters use the chassis engine hot water as a heat source. All heaters are equipped with automatic air removers, but to insure maximum heat, we recommend bleeding the heaters periodically. This is recommended when air pockets have built up in the heater core. The bleeder for the heater system is located in the right front section under the hood.

The front heater is equipped with three large squirrel cage blowers which are controlled from the driver's instrument panel. One blower is used for defrosting, one blower is used for the driver, and one blower for the right side of the unit. All three of these blowers are two-speed.

The rear heaters are controlled from master switches in the driver's instrument panel. Each heater has a separate control switch located near the heater.

~~All Wanderlodge heaters are equipped with valves to stop the circulation of engine hot water through the heater cores.~~

For summertime driving, close the valves on the heater water hoses. These valves are accessible underneath the engine hood or adjacent to it and function like the water valves in your home. The valves should be opened in winter. The coolant level in the radiator should be checked after these valves have been opened. If the liquid in the heater lines has evaporated during summer use, the radiator will lack sufficient coolant and may overheat.

B. GAS FURNACE

Your Wanderlodge is equipped with an LPG forced air heating system. This furnace located under the kitchen counter, has ducts to carry this warm air forward and aft. The warm air is moved with a 12 volt blower. You start the furnace as follows:

1. Set thermostat (front wall) to "OFF" or lowest position.
2. Close hand valve (gas supply, on supply line at right side). If furnace has been operating wait five minutes.
3. Open control door and turn hand valve to on position.
4. Depress reset button and hold.
5. ~~Pump igniter button to light pilot.~~
6. Continue to hold reset button until pilot stays lighted (30 seconds).
7. If igniter will not light pilot, remove 1 1/2" cap and light pilot with a match with the reset button depressed. Replace 1 1/2" cap.
8. Close control door and set thermostat at desired heat level.

NOTE: This furnace is completely safe. Its gas supply will shut off if the pilot light goes out. It cannot take air from the inside of the coach; it has separate intake and exhaust ducts to the outside.

III. WATER SYSTEM

A. ON-BOARD WATER SYSTEM:

Your Blue Bird Wanderlodge has a 58 gallon steel water storage tank located under the curb-side rear bed. You may use water from this tank or from commercial sources. The on-board water system has a 12-volt water pump and will operate while the vehicle is in motion or stationary.

When using the on-board water, you will hear a slight noise at the rear of the vehicle. This is the water pump and it will automatically stop and start as you open the faucet to use water. Always leave the water pump switch in the "ON" position unless you are connected to commercial water sources or will be away for an extended period. Your water storage tank has a drain valve at the rear of the tank. You have two hose connections on the rear of the coach. The street side one marked "Commercial Water", the curb side marked "Fill Tank", is for filling your water tank. When filling the tank, remove the cap from the overflow outlet on rear of coach. The tank is completely full when the water comes out of this outlet. This outlet may also be used for filling with a bucket or hose, when a hose with fitting is not available.

To use commercial power, first turn all appliance switches to the "OFF" position. Connect the proper shore line to the Wanderlodge receptacle located in the rear adjacent to the street-side tail light.

Plug the power source selector cable into the outlet marked "Commercial". If 110/220 volt power is available, you may connect directly to this source with the larger (8-3) shore line. If 110 volts is the only source available, use the smaller (12-3) shore line and connect to 110 volt power source.

IMPORTANT: Your Wanderlodge has been wired according to the National Electrical Code. All 110 volt wiring is a two-wire service with ground and all 220 volt is a three-wire service with ground. If you connect to a system which has only a two-wire circuit, ground the third wire on the adapter which you have to use.

IMPORTANT: A 110 volt commercial outlet will not operate all the electrical equipment in your Wanderlodge. You may operate only one air conditioner or the electric hot water heater. If you overload this circuit, you may blow a fuse in the commercial power circuit.

C. THE 12 VOLT SYSTEM:

The 12 volt system is connected to the chassis battery. This 12 volt system is used to operate the water pump, exhaust fans, radio, stereo and all lights.

This system incorporates a completely automatic battery charger and power supply. This unit is powered by 110 volt (either commercial or generator). It will charge your chassis battery automatically as it needs it, supply power directly to various 12 volt appliances, or if not needed will shut itself off.

The 12 volt system has a built in jumper from the positive pole of the chassis battery to the positive pole of the generator battery. This system goes through a solenoid which is activated by a push button located on the steering column support bracket. By pressing this button you are putting the two batteries in parallel and thereby jumping to the chassis battery from the generator battery. This is for starting purposes only.

CAUTION: When using battery power for lights and furnace or other 12-V fixtures, battery condition should be checked periodically.

V. SEPTIC SYSTEM

A. DRAINING THE SEPTIC TANK:

To drain the septic tank, first remove the safety plug from the end of the septic valve by turning the lock ring counterclockwise. Insert the 3" septic tank hose coupling into this valve and tighten the lock ring, then place the discharge end into a septic container. Open the septic tank valve by turning the handle to the left (counterclockwise) and pull the valve stem out. This will discharge the septic tank.

To clean the septic tank, add a cup of detergent into the septic tank after emptying it. The agitating action of the vehicle while traveling will clean the tank.

DRAIN YOUR SEPTIC TANK OFTEN. DO NOT ALLOW THE SEPTIC TANK TO OVERFLOW.

VI. APPLIANCES

A. AIR CONDITIONERS:

1. Electric

These are two roof mounted 110 volt powered air conditioners. There is a "Hi" and "Lo" fan for air circulation, and a "Hi Cool" and "Lo Cool" with desired thermostat setting for cooling.

Since all air conditioner units have their maximum amperage draw on the starting and cooling cycle, these two units should never be started simultaneously. The compressor will not start again immediately after it is shut off. Allow unit to remain off 5 minutes before attempting to restart compressor.

Your air conditioners will remove moisture from the air. That moisture that is not dissipated will discharge on top of the coach. This removal of moisture will, of course, lower the humidity and increase the effectiveness of the air conditioners.

2. Chassis Air-Conditioner

The chassis air conditioner system is quite like that which most people are familiar with in an automobile, except that this system has more output. Each of the two air handling units above the windshield has its own three speed 12 volt blower. The controls are located below the dashboard.

This unit too will remove moisture from the air. This is drained through tubes down the corner windshield posts.

B. HOT WATER HEATER:

The 110 volt electric hot water heater in the water system is controlled by a switch located on the unit under the counter top. The hot water heater can be turned "ON" or "OFF" while driving. However, the power generator should not be started with the heater on. CAUTION: Do not turn the hot water heater on unless you have an ample supply of water in the tank.

C. RANGE AND OVEN:

The range and oven on the Blue Bird Wanderlodge is controlled by pilot lights.



()



D. REFRIGERATOR:

Controls for both systems are in the panel at the base of the refrigerator.

LPG Operation - To light the refrigerator, turn the gas valve to the "ON" position. Push "IN" the red button on the left-hand side of the refrigerator. Hold for ten seconds. Light the pilot light by turning the flint lighter knob clockwise. This works like a cigarette lighter. Continue to hold in the red button until the pilot light will remain lit. Select the temperature you desire on the temperature selector knob adjacent to the pilot control knob.

Electric Operation - To operate the refrigerator electrically, turn the gas valve to the "OFF" position and turn the electric switch to the "ON" position. Set the temperature selector knob to the desired temperature.

E. DINETTE:

To make a bed out of your dinette, fold up the leg on the table by pulling the spring collar down and fold the leg up. Remove the table from the wall brackets and lower the table to rest on the edges of the dinette seats. Remove the dinette seat backs by lifting upward and outward. Place the dinette back cushions between the dinette seat cushions. This will form a bed.

F. SOFA BED:

To make a bed out of the sofa, lower the legs on the front part of the sofa platform. This is the same type leg as the dinette. Slide out the seat panel of the sofa until the back is unfolded. To convert back to a sofa, pull on the strap provided while pushing the seat panel. This will start the hinge action and allow seat panel to slide easily into place.

G. LPG OPERATION:

Your "Wanderlodge is equipped with two LPG bottles and an automatic changeover valve. Open both valves one or two turns. Turn the arrow on the regulator valve so that it points toward either front or rear. The coach will use gas from the front or rear tank until it is exhausted. It will then automatically start using from the other tank. When this change-over occurs, a red indicator will show on the gas regulator. Fill the exhausted LPG bottle and turn the arrow on the gas regulator to point in the other direction. This indicator is a warning that you have used all the gas from the front or rear tank. These tanks also have indicators showing the amount of LP gas in each. These tanks do not have to be removed to fill. The quick fill valve is located on the front of the tank.

BEFORE YOU TRAVEL

1. Close the side awning windows
2. Put the entrance step in the travel position
3. Secure loose items inside the unit
4. Disconnect all service lines and stow them away
5. Insure all drawers and doors are in the locked position
6. Check the tightness of the LPG bottles
7. Turn the LPG heater "OFF"
8. Check the lighting system both inside and outside
9. Check the tire inflation and oil
10. Lock Door
11. Release the emergency brake
12. HAPPY WANDERLODGING!!!

WINTERIZING THE WANDERLODGE

1. Check anti-freeze in chassis engine cooling system.
2. Put anti-freeze in holding tank
NOTE: Use only permanent type Ethylene Glycol base anti-freeze. Alcohol anti-freeze would have a reaction with the plastic piping.
3. Check your batteries for capacity and filling
4. Make certain your oil and lubricants are "winter weight"
5. Check heater and defroster system (Sec. II, A)

WHEN WANDERLODGE IS NOT IN USE

1. Check to see emergency brake is tight
2. Shut off 12 volt water pump
3. Shut off all other 12 volt accessories
4. Shut off LPG bottles
5. Drain water tank
6. Drain hot and cold water lines (cold weather) or plug in 110 volt power so thermostatically controlled heat tape will operate
7. Leave refrigerator door open
8. Shut all windows and vents
9. Remove keys and lock entrance door

C A P A C I T I E S

| | <u>GMC</u> | <u>CHEVROLET</u> | <u>FORD</u> | <u>ONAN</u> |
|---|-----------------------------------|------------------|------------------|------------------------------|
| FUEL - Regular | 40-55-110 | 40-55-110 | 40-55-110 | From Rear Tank of Chassis |
| COOLING SYSTEM & FRONT HEATER (Qts.) | 40.9 | 30.4 | 32.9 | Air Cooled |
| W/Rear Heating System Qts. | 55.1 | 44.6 | 47.1 | |
| CRANKCASE Capacity (Dry) | 11 | 7 3/4 | 9 | |
| (Quarts) Refill | 9 | 6 | 8 | |
| WEIGHT 30°F-100°F | SAE 30 | SAE 30 | SAE 30 or 20W-40 | SAE 30 |
| 0°F-30°F | SAE 10W | SAE 10W | SAE 20 or 10W-30 | SAE 10W |
| SPECIFICATION (API) | DG or MS/DG | DG or MS/DG | MS | MS or MS/DG |
| TRANSMISSION | | | | |
| 5-Speed | 12 Pints | 10 Pints | 13 Pints | |
| Allison | 19 Quarts | 19 Quarts | 19 Quarts | |
| TIRES | | | | |
| Recommended | 9:00 x 20 - 10 Ply - Dual Rear | - 70# | | |
| Pressure | 9:00 x 20 - 12 Ply - Single Front | - 95# | | |

NORMAL CURRENT DRAW FOR 12 VOLT EQUIPMENT

| <u>SWITCH</u> | <u>NO. ITEMS</u> | <u>AMPS</u> |
|-------------------------------------|-------------------------|-------------|
| Marker/Identification Lamps | 12 | 7.1 |
| Stop Lamps | 4 | 7.2 |
| Parking Lamps | 4 | 2.1 |
| Head Lamps (Low Beam) | 4 (Includes tail Lamps) | 9.2 |
| Head Lamps (High Beam) | 6 (Includes tail Lamps) | 13.4 |
| Ignition | 1 | 2.5 |
| Instrument Panel | 1 | 1.0 |
| Entry Lamps | 3 | 2.5 |
| Blowers Heater High/Low | 1 | 9.0/4.5 |
| Defroster High/Low | 1 | 9.0/4.5 |
| Foot Warmer High/Low | 1 | 9.0/4.5 |
| Windshield Wipers | 2 | 8.0 |
| Back-Up | 2 | 4.2 |
| Front Living Area | 6 | 7.8 |
| Bathroom | 1 | 1.3 |
| Shower | 1 | 1.0 |
| Dinette (Double Fixture) | 1 | 2.6 |
| Kitchen (Double Fixture) | 1 | 2.6 |
| Bedroom | 2 | 5.2 |
| Water Pump (Intermittent) | 1 | 6.2 |
| Rear Heaters High/Low (Each Heater) | 1 | 9.0/4.5 |
| L.P. Furnace Blower | 1 | 7.3 |
| Defroster Fan | 1 | 2.5 |
| Ceiling Vent | 1 | 4.0 |
| Stereo | 1 | 2.0 |
| Radio | 1 | 1.0 |

FORM # WL69500

Page #14 of 14 Pages

