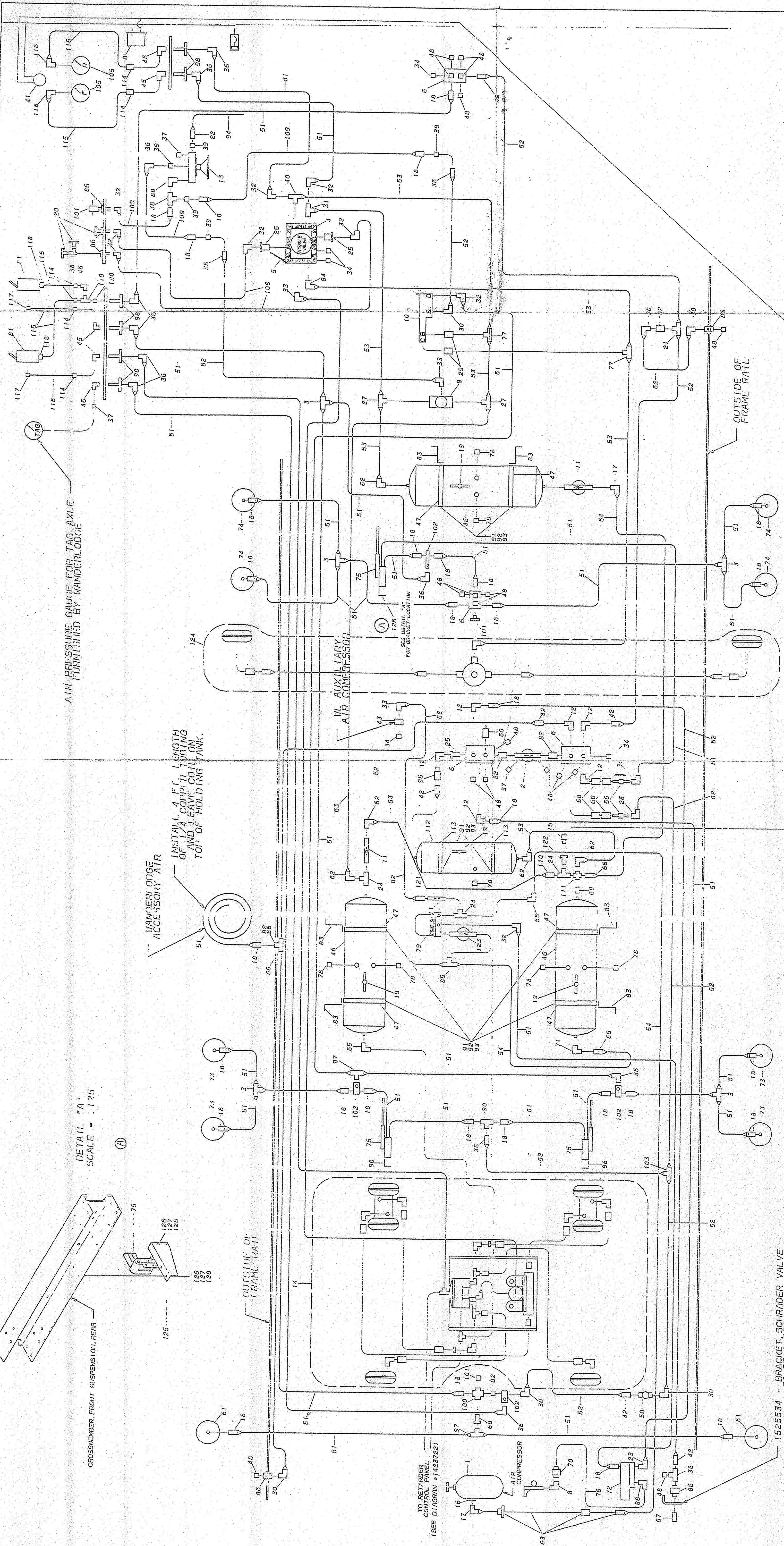


SHEET 1/2
UPDATED BY
PN 1907724
DATE 4/23/96



NOTES:

1. ARROW ON SINGLE CHECK VALVE, ITEM #11, MUST BE POSITIONED AS SHOWN.
2. THE QUICK RELEASE VALVE, MUST BE LOCATED TO CHASSIS WITH EXHAUST PORT DOWN.
3. BUZZER, ITEM #8, MUST BE LOCATED ON THE LOWER DASII PANEL.
4. AIR GAUGES, ITEM #105 & #106, MUST BE LOCATED ON THE INSTRUMENT PANEL.
5. AIR WARNING LIGHT, ITEM #41, MUST BE LOCATED ON THE INSTRUMENT PANEL.
6. PARKING BRAKE VALVE, ITEM #13, MUST BE LOCATED ON THE LOWER HALF OF INSTRUMENT PANEL.
7. LOW PRESSURE INDICATOR, ITEM #15, MUST BE LOCATED ON THE WET TANK SIDE OF PRESSURE VALVE.
8. ARROW ON PRESSURE PROTECTION VALVE, ITEM #2, MUST BE POSITIONED AS SHOWN.

NOTE: FOR DIAGRAM, DUAL AIR BRAKE, SHEET 2 OF 2, 42 FT VILUB, SEE DRAWING NO. 1702267

MATERIAL:		REVISED TRACKET AND ADDED DETAIL		DATE	BY	APP.	SCALE	PAGE
FLAT SIZE:	FINISH	REVISED	TRACKET	11/23/95	DCU	DCU	1:1	1 OF 2
PAINT	PAINT	DCU	DCU					
OTHER	OTHER							
TOLERANCE ON ALL DIMENSIONS AS PLUS UNLESS OTHERWISE SPECIFIED.		BLUE BIRD CORPORATION		PORT VALLEY GEORGIA, U.S.A.		DIAGRAM, DUAL AIR BRAKE, SHEET 1 OF 2		42 FT VILUB
UNACTIVES WRS		APP. 6-27-94		BY SHC		D 1782259		1 OF 2