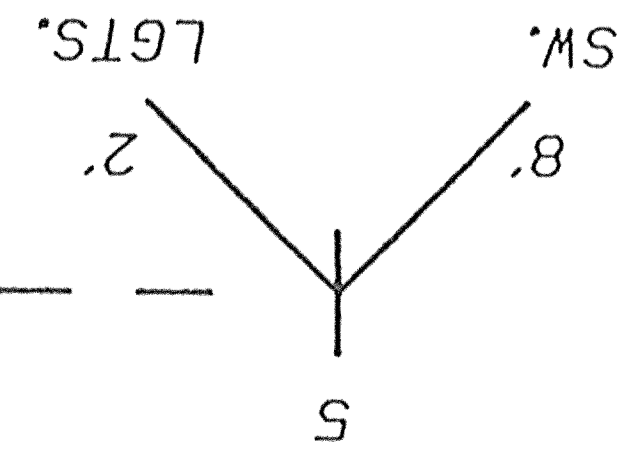
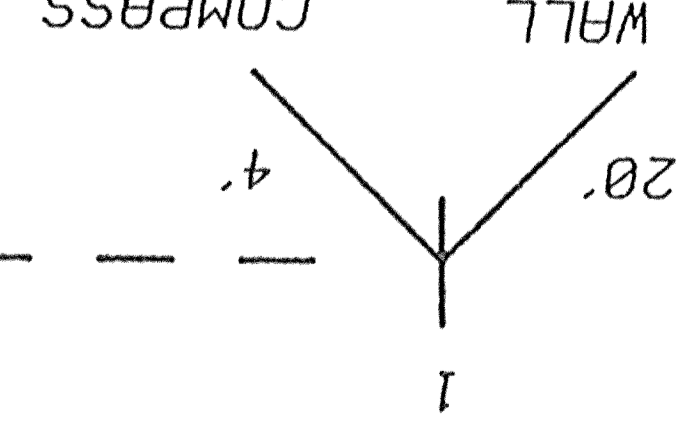


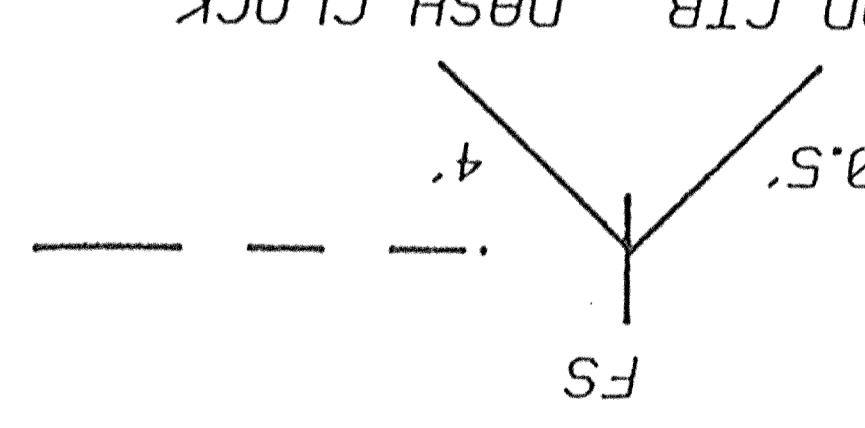
#28 - BLU
KITCHEN FLUO.
LGTS.



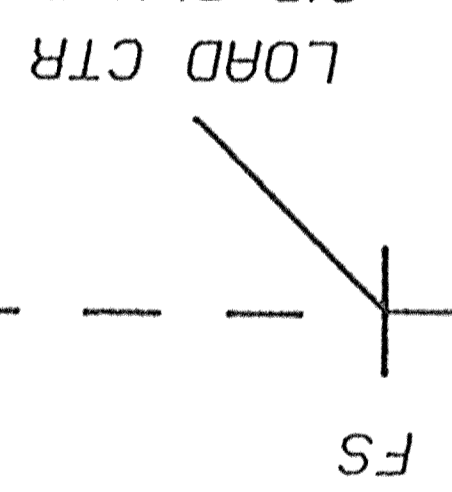
#077 - 2 COND. CABLE
ELEC COMPASS/
THERMOMETER
RUN DOWN WALL
TO OUTSIDE TEMP.
SENSOR
COMPASS
4'



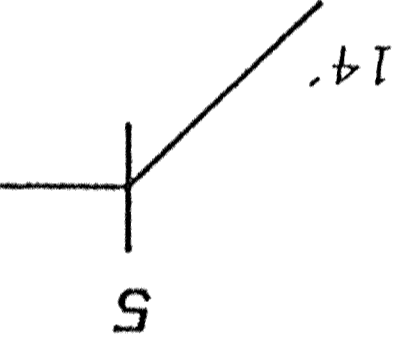
#6 - BLK
DASH CLOCK, POWER
DASH CLOCK
LOAD CTR
DASH CLOCK
10.S'
4'



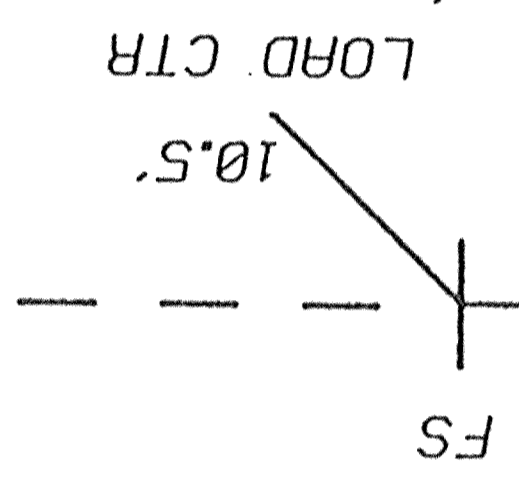
#78 - RED
ELEC COMPASS/
THERMOMETER
LOAD CTR
CIR BLK "C" SK 47



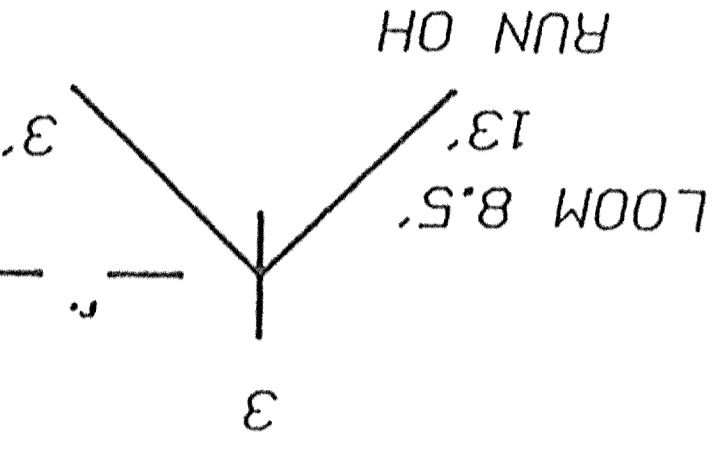
#78 - 2 COND CABLE
W/ SHIELD
ELEC COMPASS/
THERMOMETER
RUN OVERHEAD TO
THERMOMETER SENSOR
RUN ONLY W/ OPT 6034 ONLY
4'



#44 - YEL - 10 GA.
TO FRT FUSE BLOCK
#45 - YEL - 10GA
NON-MASTERCED
CONSTANT HOT

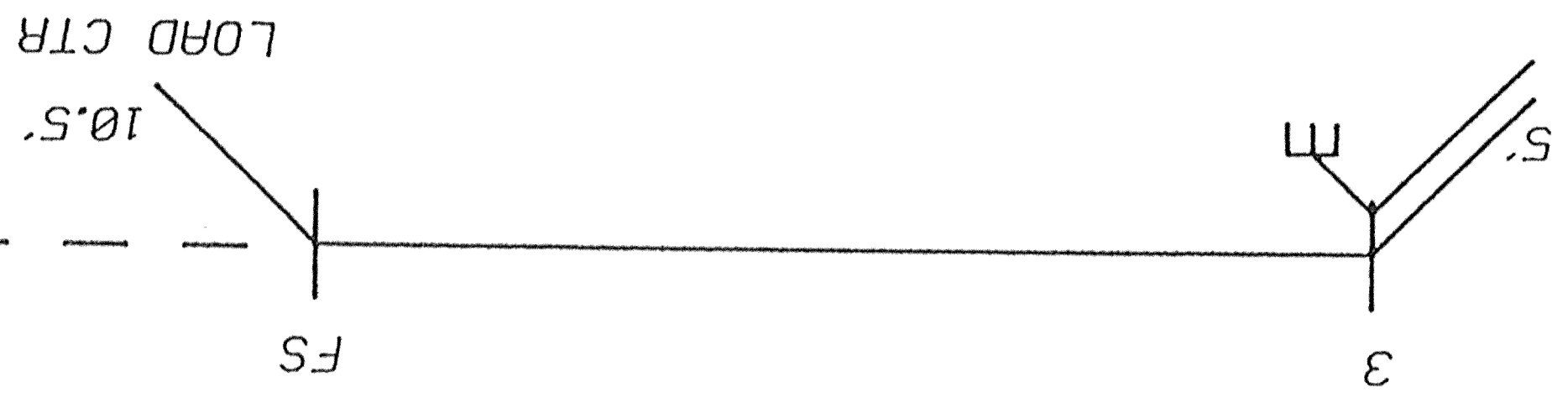


ON LINE: - - - - CELLULAR PHONE
INSTALL ANTENNA AND
RUN #21-COAX TO HOOD
TABLE COIL UP WITH #21-RED
AND TAG: "CELLULAR PHONE"
#21-BRN, #21-BLU AND #21-ORN/BLK



#5 - GRN
#4 - GRN/WHT
#1 - GRY
#2 - RED
#3 - BLK/YEL
SPARE WIRES
LABEL BOTH ENDS
OF WIRES "SPARES"

#23 - BLU
READING LGTS.,
LIVINGROOM
LOAD CTR
10.S'
FS



NOTE: ALL WIRES ARE 14GA UNLESS OTHERWISE SPECIFIED

ECH.	Blue Bird Wanderlodge	SCALE	----
	FORT VALLEY, GEORGIA, U.S.A.		
	HARNES, WIRING, 12VDC, LH		1995 WLWB 40 FT.
DR. 11/28/94	BY T. USSERY	SHT. 7 OF 14	
App: 11/16/94	BY [Signature]		
CK.		SIZE	B
			6049092

LET	REVISIONS	DR	APP	CK	ECH	DATE

INACTIATES NOS 6042980
REPLACED BY NOS