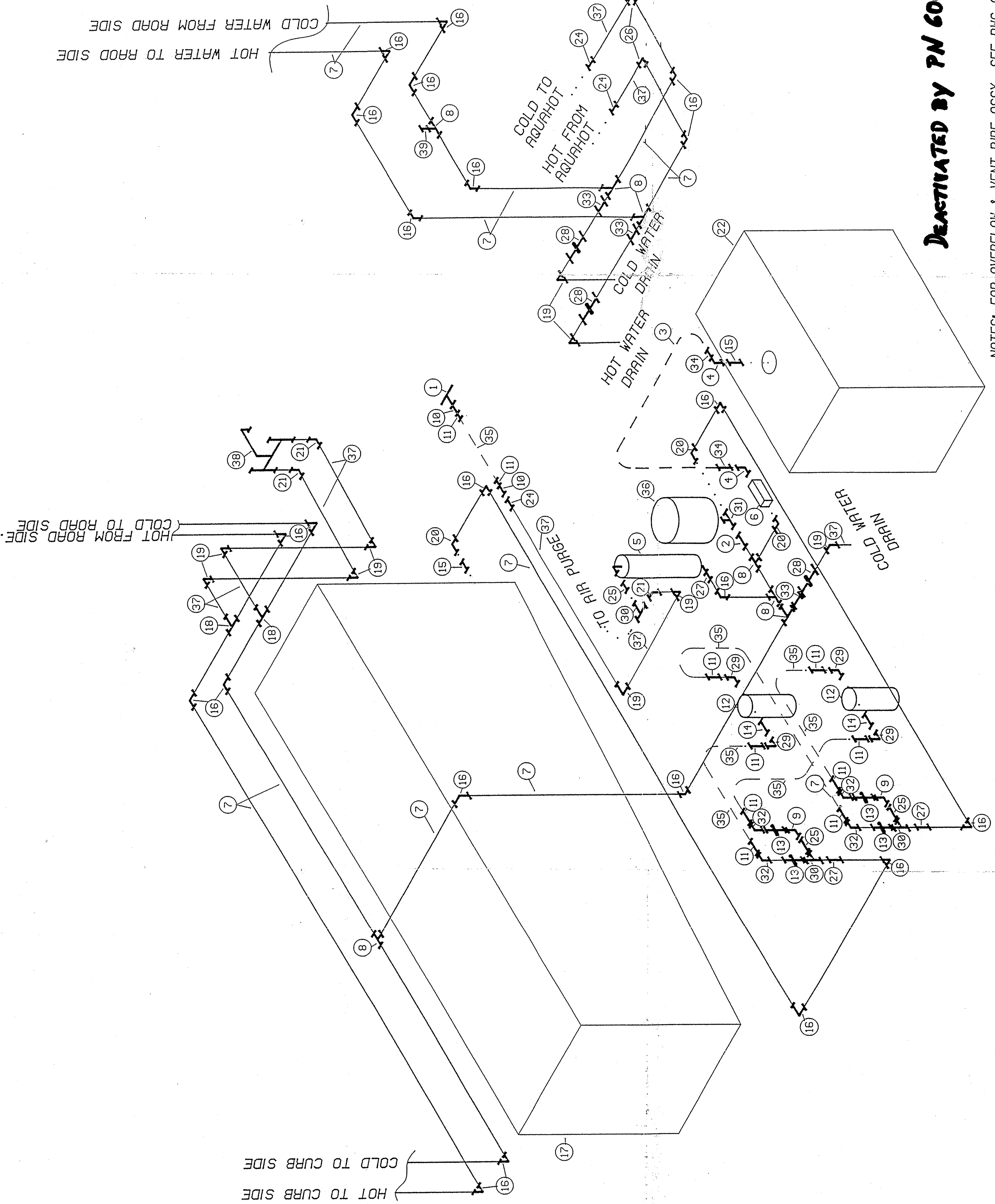


NO.	PART #	DESCRIPTION	QTY.
1	6080667	REGULATOR, CITY WATER FILL, SHURFLO	1
2	6042873	ADAPTER, STRAIGHT, 3/4P - 3/4MPT, FL 02848	1
3	6021471	HOSE, WATER, 3/4 IN I.D.	10'
4	6074579	ELBOW, 90°, 3/4 INS X 3/4 MIP	2
5	3801255	PURIFIER, WATER, MODEL 7550	1
6	6083232	VALVE, SOLENOID, CUT OFF, SPORLAN, 3/4	1
7	6021653	TUBING, POLY, 3/4 I.D.	120'
8	6042741	TEE, 3/4 POLY, FL02827	7
9	2233930	ELL, STREET, 1/2 NPT BRASS NO 340 X 8	2
10	3804820	CONNECTOR, 1/2 FPT X 1/2 HOSE BARB, BRASS	2
11	2027571	CLAMP, HOSE, 6203	10
12	6080659	PUMP, F/W, SHURFLO 2088-554-444, 3.5 GPM	2
13	6083091	VALVE, GATE, 1/2FPT, NIBCO T-29	4
14	6080683	STRAINER, IN-LINE, SHURFLO 170-061-09	2
15	6021695	BUSHING, BRASS, 1-1/4 MPT - 3/4 FPT	2
16	6042782	ELBOW, 3/4 POLY, FL02806	22
17	6080444	TANK, FRESH WATER, 90 GALLONS	1
18	6042758	TEE, 3/4 - 3/4 - 1/2 POLY, FL02826	2
19	6042774	ELBOW, 1/2 POLY, FL02800	9
20	6044093	ELBOW, 3/4P - 3/4MPT, FLAIR-IT 02809	3
21	6042808	ELBOW, SW, 1/2P - 1/2FPT, FL02816	3
22	6081673	TANK, FRESH WATER, 33.5 GALLON	1
23	2008555	CLAMP, UNIVERSAL HOSE, 18 INCH (NOT SHOWN)	2
24	6042824	ADAPTER, STRAIGHT, 1/2P-1/2MPT, FL02842	3
25	3758554	NIPPLE, PIPE, 1/2 X 2 LONG, BRASS	3
26	6042790	ELBOW, 1/2 - 3/4, FL02805	2
27	6042881	ADAPTER, STRAIGHT, 3/4P-1/2MPT, FL02857	3
28	6042832	VALVE, STRAIGHT STOP, 1/2 POLY, FL02880	3
29	6083083	ELBOW, 90 DEGREE, SHUR 8-034-00, 1/2 BARB	4
30	0522516	TEE, STREET, 0.50 PIPE, BRASS	3
31	6081558	TEE, PVC, 3/4 FPT, NIBCO 4612-3-3, 3/4 FIPT	1
32	6046833	ELBOW, 1/2MPT-1/2 HOSE BARB	4
33	6066336	COUPLING, STRAIGHT, 1/2P - 3/4P, FL 02845	3
34	3747862	CLAMP, HOSE, 5/8 INCH	2
35	2255933	HOSE, WATER PUMP, 1/2 INCH	15'
36	6080675	ACCUMULATOR, PRESSURE, JABSCO 18810-0000	1
37	3741865	TUBING, 0.50 I.D. POLY	20'
38	3791951	FAUCET, KITCHEN, NO. 7310A	1
39	6078562	CAP, 3/4 POLY, FLAIR-IT 02861	1



DEACTIVATED BY PN 6084768 6/7/1996

NOTES: FOR OVERFLOW & VENT PIPE ASSY., SEE DWG. 6083448.
 FOR CROSSOVER PIPE ASSY., SEE DWG. 6083042.
 FOR HOLDING TANK FLUSHER PLUMBING, SEE DWG. 6083034.
 FOR VENT ASSY., 90 GAL TO 30 GAL TANK, SEE DWG. 6083034.

MATERIAL: