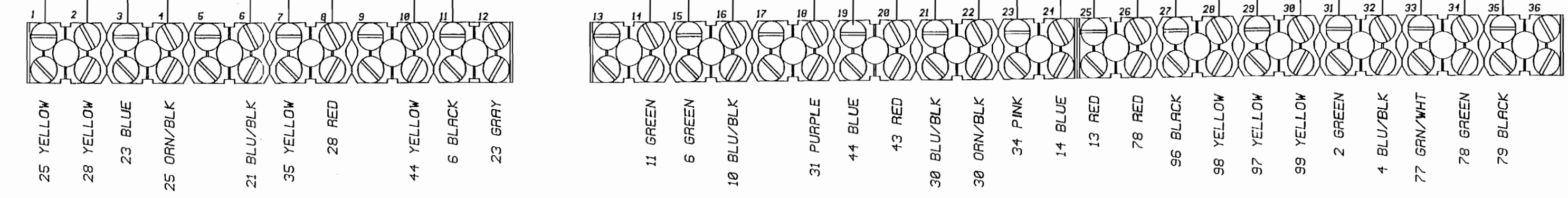


NOTE: SEE P/N 608852 SIZE "B", SHEET 2 OF 2 FOR PARTS USAGE.

- #26 - GRN - LIVINGRM/KIT. T-STAT; KIT. KOOL-O-MATIC
- #26 - ORNVBRN - KIT. KOOL-O-MATIC FAN
- #16 - YEL - 10GA. - TO SK1-9 BUS REAR LD. CTR.
- CO-PILOT PNL IGN P35-88 ← #88 GRN

- #31 - YEL - LIVINGRM. FLUO. LGTS., UPPER
- #26 - YEL - DINETT LWR. FLUO/DIN. (4) LGT. CEILING FIXTURE; L-DINETTE
- #34 - YEL/BLK - COPILOT FLUO. LGT.
- #9 - GRY - PORCH LGT.
- #20 - BLU - READING LGTS, DINETTE & RH LIVINGRM; 1-LGT CEILING FIXTURE VISTA LGTS.
- #18 - GRN/WHT - CARBON MONOXIDE DETECTOR
- #32 - ORG/BLK COMP DOOR LOCK/UNLOCK SW
- #51 FREEZER
- #32 - YEL - LIVINGRM. FLUO. LGTS., LOWER
- #15 - RED - DINETTE TABLE MOTOR
- #28 - YEL - BATHRM. FLUO. LGTS. RH
- #10 - RED - CO-PILOT SEAT CONTROLS
- #12 - GRN - OUTSIDE ELEC GRILLE RELAY
- #11 - GRN - ENT. DOOR LOCK PWR.
- #6 - YEL - DOOR LOCK MODULE POWER
- #2 - YEL - DOOR MODULE POWER
- #4 - PUR - BUZZER SLOW
- #5 - PUR - BUZZER FAST
- #9 - RED - TV ANTENNA ROTOR
- #23 - BLK - DOOR CHIME
- #15 GRN → P35-15 TV ANTENNA UP/DOWN
- #03 - RED - AIR HORN SOLENOID

TERMINAL #	LABEL - DESCRIPTION
1	#25 YEL - CEILING LGTS. (OPT.)
2	#26 YEL - FLUO. LGTS. KITCHEN CUC
3	#26 YEL - READING LGTS. LIVINGRM.
4	#26 ORG/BLK - TWO BURNER COOK TOP
5	
6	#21 BLU/BLK - KIT. STOVE LGT.
7	#35 YEL - RH DINETTE UPPER FLUO. LGTS.
8	#28 RED - HICHOPILOT TOILET
9	
10	#11 YEL - LWR. FRT. COMPT. PANEL FUSE BLE.
11	#6 BLK - CLOCK
12	#23 GRN - RH LANDING LGT. SW.
13	
14	#11 GRN - SPOT LGT SW. IGN. SPOT SPEED CTRL.
15	#6 GRN - TRIP COOPERATED TV ANTENNA LGT.
16	#10 BLU/BLK - ELECTRIC HEAT ENABLE
17	
18	#31 PUR - LPG LEAK DETECTOR
19	#11 BLU - RH DIRECTIONAL LGTS.
20	#13 RED - LH DIRECTIONAL LGTS.
21	#30 BLU/BLK - SYSTEMS MONITOR PANEL
22	#30 ORNV/BLK - IGN. FRT. LWR. FRT. COMP. PNL.
23	#34 PINK - REAR DIR. LIGHT (PWR)
24	#14 BLU - RH TURN SIGNAL
25	#13 RED - LH TURN SIGNAL
26	#78 RED - ELEC COMPASS THERMOMETER
27	#86 BLK - RH BAGGAGE COMPT. LOCK SOLENOIDS (UNLOCK)
28	#88 YEL - RH BAGGAGE COMPT. LOCK SOLENOIDS (LOCK)
29	#87 YEL - LH BAGGAGE COMPT. LOCK SOLENOIDS (UNLOCK)
30	#89 YEL - LH BAGGAGE COMPT. LOCK SOLENOIDS (LOCK)
31	#2 GRN - TO LWR. DASH LOCK SWITCH
32	#4 BLU/BLK - TO LWR. DASH UNLOCK SWITCH



- 25 YELLOW
- 28 YELLOW
- 23 BLUE
- 25 ORNV/BLK
- 21 BLU/BLK
- 35 YELLOW
- 28 RED
- 44 YELLOW
- 6 BLACK
- 23 GRAY
- 11 GREEN
- 6 GREEN
- 10 BLU/BLK
- 31 PURPLE
- 44 BLUE
- 43 RED
- 30 BLU/BLK
- 30 ORNV/BLK
- 34 PINK
- 14 BLUE
- 13 RED
- 78 RED
- 96 BLACK
- 98 YELLOW
- 97 YELLOW
- 99 YELLOW
- 2 GREEN
- 4 BLU/BLK
- 77 GRN/WHT
- 78 GREEN
- 79 BLACK

**MATERIAL:**

**FLAT SIZE:**

FINISH: RAW  PAINT  PRIME  COLOR OR TYPE: PLATING  OTHER

TOLERANCES ON ALL DIMENSIONS IS PLUS OR MINUS UNLESS OTHERWISE SPECIFIED.

INACTIVATES NOs: 608852

REPLACED BY NO:

REVISIONS: DR. APP. CK. ECN DATE

LET: ECN: ????

Blue Bird Wonder Lodge  
FORT VALLEY, GEORGIA, U.S.A.

SCALE: ---

DIAGRAM ASSY, ELECTRICAL COMPONENT PANEL, OVERHEAD FRONT

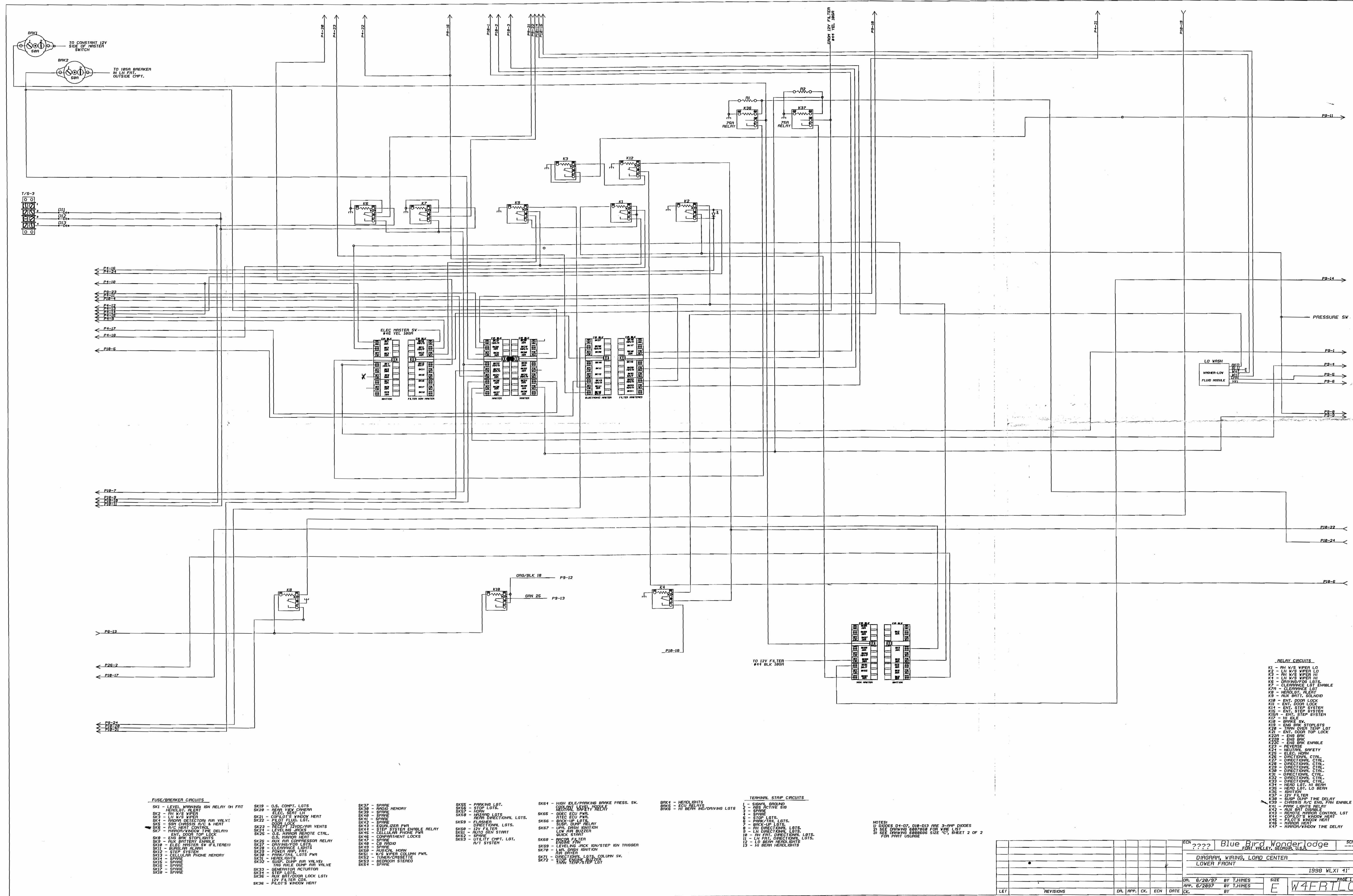
1998 WLWB

DRG. 11/26/97 BY T. HIMES  
DR. 11/26/97 BY T. HIMES

APP. BY: CK. BY:

SIZE: D 98W40HLC

PAGE 1 OF 2



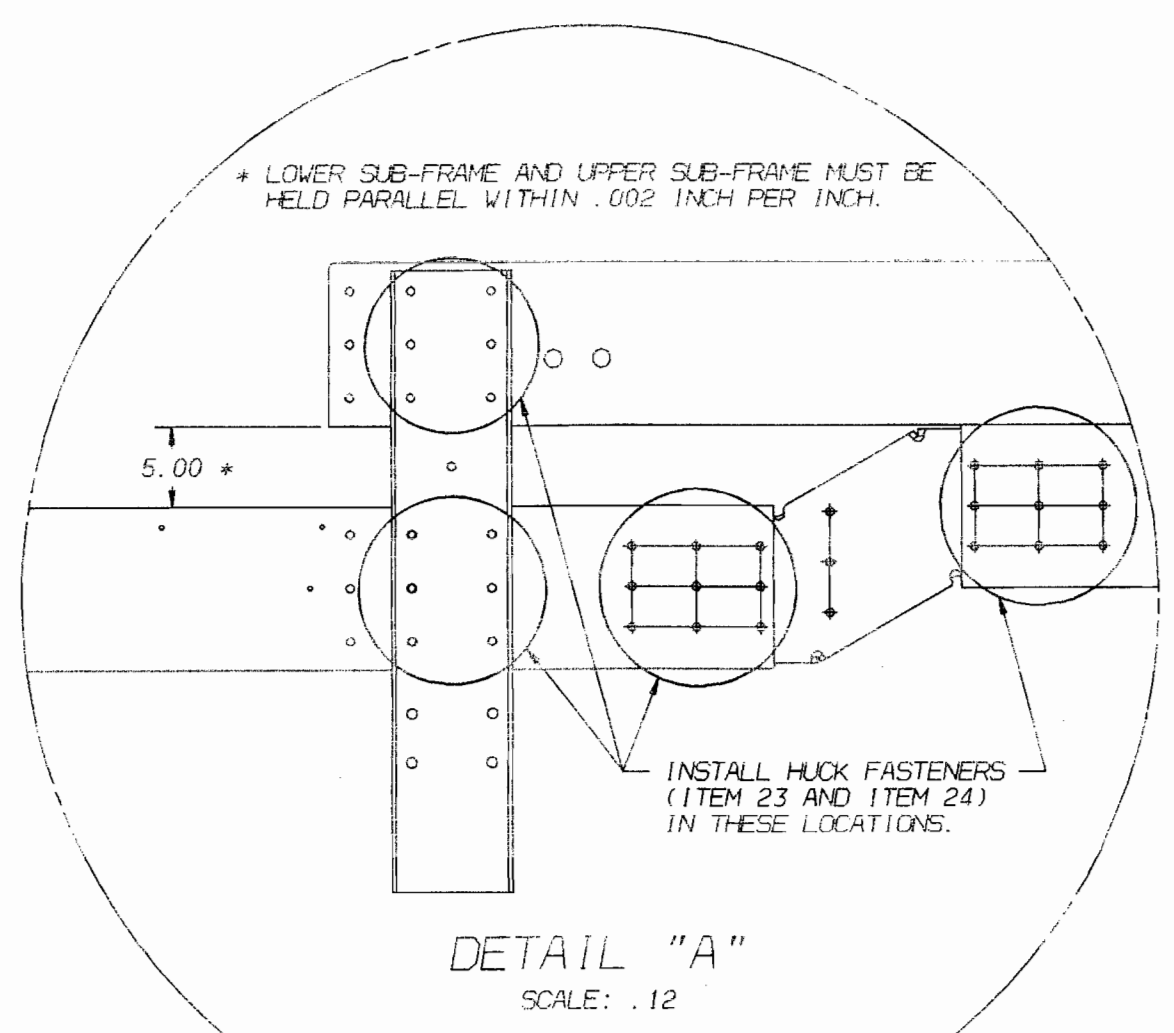
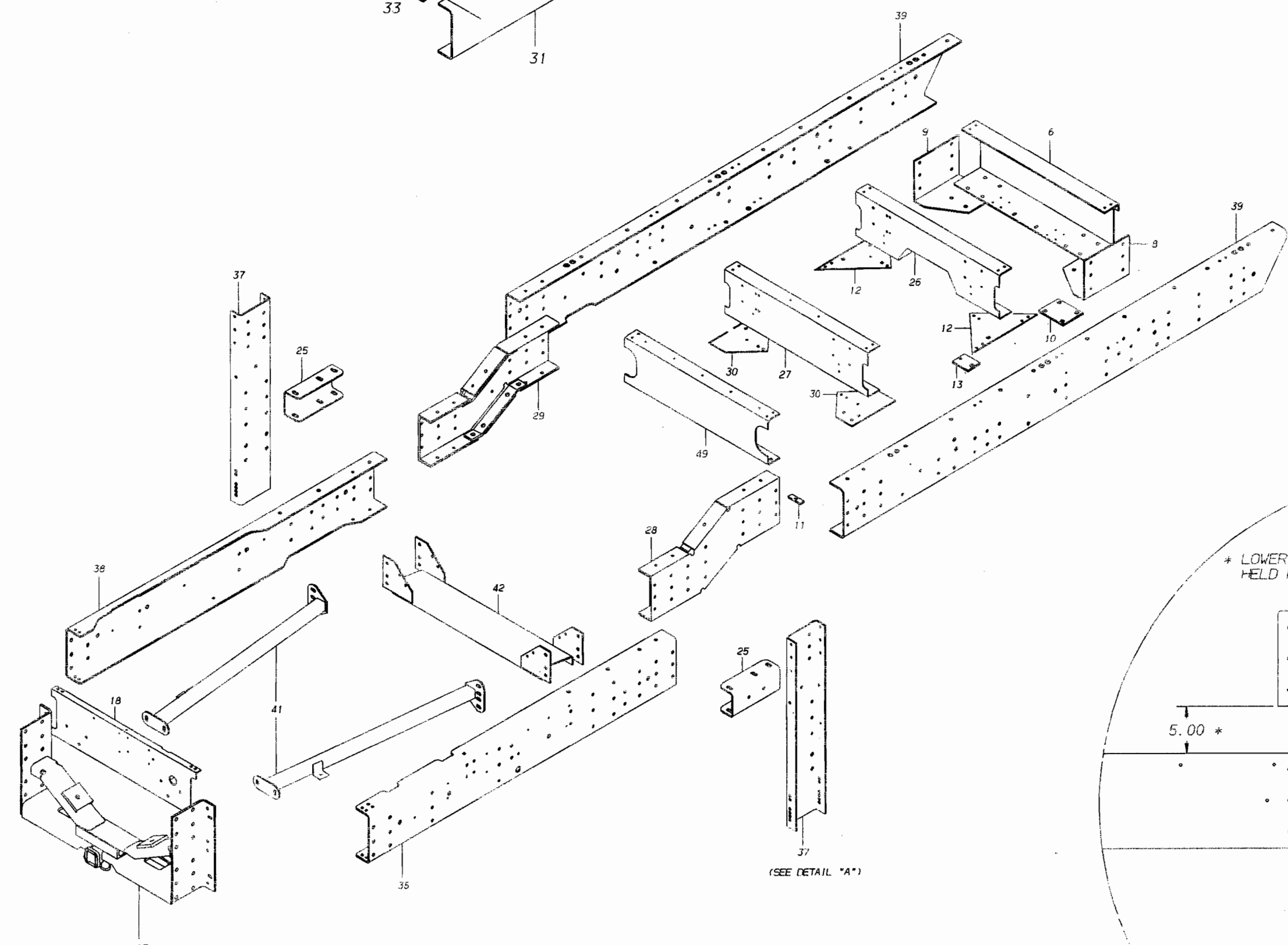
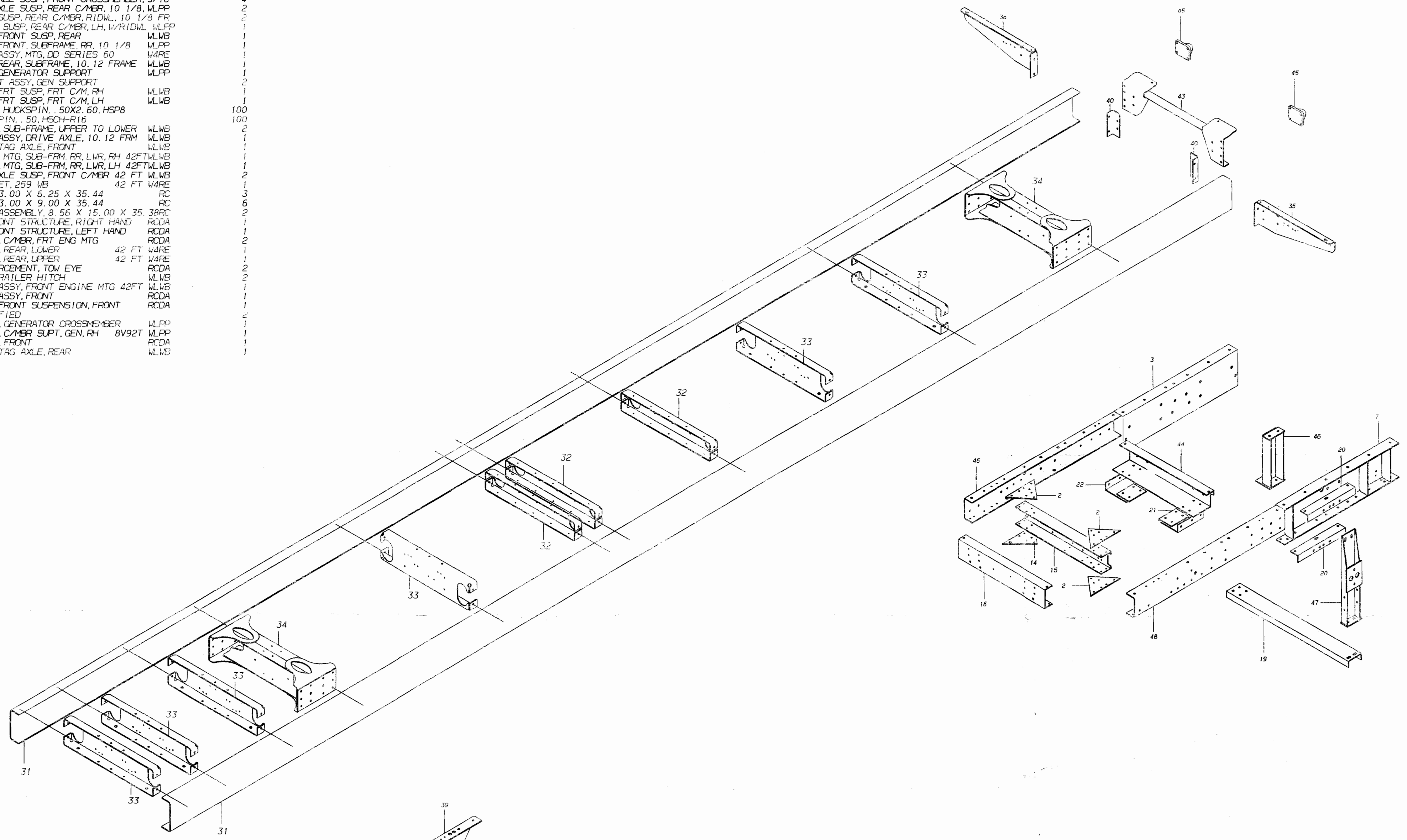


41' W4RE

43' W4RE

KEY PART-NO	DESCRIPTION	QTY
1 0800730	PLATE, CHASSIS SERVICE NUMBER	NI
2 0961664	GUSSET, FRONT SUSP, REAR C/M, LH	3
3 1791706	CHANNEL, ASSY, GENERATOR SUPT, 10, 12 FRM	MLPP
4 1039295	PLATE, CERTIF, W/INTERMEDIATE AXLE	NI
5 1045087	PLATE, AXLE RECORD, TAG AXLE	NI
6 1149251	CROSSMEMBER, DRV AXLE SUSP, FRT, 10 1/8 FRM WP	MLPP
7 1278006	BRACKET ASSY, GEN SUPT	370683903 MLPP
8 1158906	GUSSET, DRV AXLE SUSP, FRT C/M, RH, 10 1/8, WP	1
9 1158914	GUSSET, DRV AXLE SUSP, FRT C/M, LH, 10 1/8, WP	1
10 1158956	SPACER, REAR SUSP, FRT C/M, RIDGL, 5/16 T	2
11 1159797	SPACER, TAG AXLE SUSP, FRONT CROSSMEMBER, 5/16	4
12 1160548	GUSSET, DRV AXLE SUSP, REAR C/M, 10 1/8, MLPP	2
13 1226568	SPACER, REAR SUSP, REAR C/M, RIDGL, 10 1/8 FR	2
14 1278027	GUSSET, FRONT SUSP, REAR C/M, LH, W/RIDGL, MLPP	1
15 1278035	CROSSMEMBER, FRONT SUSP, REAR	MLWB
16 1278043	CROSSMEMBER, FRONT, SUBFRAME, RR, 10 1/8	MLPP
17 1957331	CROSSMEMBER ASSY, MTG, DD SERIES 60	W4RE
18 1286673	CROSSMEMBER, REAR, SUBFRAME, 10, 12 FRAME	MLWB
19 1331297	CROSSMEMBER, GENERATOR SUPPORT	MLPP
20 1029743	ANGLE, BRACKET ASSY, GEN SUPPORT	2
21 1503705	GUSSET ASSY, FRT SUSP, FRT C/M, RH	MLWB
22 1503713	GUSSET ASSY, FRT SUSP, FRT C/M, LH	MLWB
23 1636950	PIN, FLG HEAD, HUCKSPIN, 50X2, 60, HSP8	100
24 1636968	COLLAR, HUCKSPIN, 50, HSC8-R16	100
25 1866896	BRACKET, ATCH, SUB-FRAME, UPPER TO LOWER	MLWB
26 1904135	CROSSMEMBER ASSY, DRIVE AXLE, 10, 12 FRM	MLWB
27 1914811	CROSSMEMBER, TAG AXLE, FRONT	MLWB
28 1920230	BRACKET ASSY, MTG, SUB-FRM, RR, LWR, LH, 42FT MLWB	1
29 1920248	BRACKET ASSY, MTG, SUB-FRM, RR, LWR, RH, 42FT MLWB	1
30 1922798	GUSSET, TAG AXLE SUSP, FRONT C/M, 40 FT MLWB	2
31 1954353	FRAME RAIL, SET, 247 WB	40 FT W4RE
32 1928068	CROSSMEMBER, 3, 00 X 6, 25 X 35, 44	RC
33 1928076	CROSSMEMBER, 3, 00 X 9, 00 X 35, 44	RC
34 1928084	CROSSMEMBER ASSEMBLY, 8, 56 X 15, 00 X 35, 38RC	RC
35 1932821	OUTRIGGER, FRONT STRUCTURE, RIGHT HAND	RCDA
36 1932839	OUTRIGGER, FRONT STRUCTURE, LEFT HAND	RCDA
37 1943752	CHANNEL, SIDE, C/M, FRT, ENG, MTG	RCDA
38 1946607	SUBFRAME SET, REAR, LOWER	40 FT RCDA
39 1946615	SUBFRAME SET, REAR, UPPER	40 FT RCDA
40 1948819	ANGLE, REINFORCEMENT, TOW EYE	42 FT W4RE
41 1867399	BRACE ASSY, TRAILER HITCH	MLWB
42 1875327	CROSSMEMBER ASSY, FRONT ENGINE MTG 42FT	MLWB
43 1951417	CROSSMEMBER ASSY, FRONT	RCDA
44 1954551	CROSSMEMBER, FRONT SUSPENSION, FRONT	RCDA
45 1170943	TOW EYE, MODIFIED	1
46 1290006	SUPPORT ASSY, GENERATOR CROSSMEMBER	MLPP
47 1150887	BRACKET ASSY, C/M, SUPT, GEN, RH 8V92T	MLPP
48 1949445	SUBFRAME SET, FRONT	RCDA
49 1881127	CROSSMEMBER, TAG AXLE, REAR	MLWB

KEY PART-NO	DESCRIPTION	QTY
1 0800730	PLATE, CHASSIS SERVICE NUMBER	NI
2 0961664	GUSSET, FRONT SUSP, REAR C/M, LH	3
3 1791706	CHANNEL, ASSY, GENERATOR SUPT, 10, 12 FRM	MLPP
4 1039295	PLATE, CERTIF, W/INTERMEDIATE AXLE	NI
5 1045087	PLATE, AXLE RECORD, TAG AXLE	NI
6 1149251	CROSSMEMBER, DRV AXLE SUSP, FRT, 10 1/8 FRM WP	MLPP
7 1278006	BRACKET ASSY, GEN SUPT	370683903 MLPP
8 1158906	GUSSET, DRV AXLE SUSP, FRT C/M, RH, 10 1/8, WP	1
9 1158914	GUSSET, DRV AXLE SUSP, FRT C/M, LH, 10 1/8, WP	1
10 1158956	SPACER, REAR SUSP, FRT C/M, RIDGL, 5/16 T	2
11 1159797	SPACER, TAG AXLE SUSP, FRONT CROSSMEMBER, 5/16	4
12 1160548	GUSSET, DRV AXLE SUSP, REAR C/M, 10 1/8, MLPP	2
13 1226568	SPACER, REAR SUSP, REAR C/M, RIDGL, 10 1/8 FR	2
14 1278027	GUSSET, FRONT SUSP, REAR C/M, LH, W/RIDGL, MLPP	1
15 1278035	CROSSMEMBER, FRONT SUSP, REAR	MLWB
16 1278043	CROSSMEMBER, FRONT, SUBFRAME, RR, 10 1/8	MLPP
17 1957331	CROSSMEMBER ASSY, MTG, DD SERIES 60	W4RE
18 1286673	CROSSMEMBER, REAR, SUBFRAME, 10, 12 FRAME	MLWB
19 1331297	CROSSMEMBER, GENERATOR SUPPORT	MLPP
20 1029743	ANGLE, BRACKET ASSY, GEN SUPPORT	2
21 1503705	GUSSET ASSY, FRT SUSP, FRT C/M, RH	MLWB
22 1503713	GUSSET ASSY, FRT SUSP, FRT C/M, LH	MLWB
23 1636950	PIN, FLG HEAD, HUCKSPIN, 50X2, 60, HSP8	100
24 1636968	COLLAR, HUCKSPIN, 50, HSC8-R16	100
25 1866896	BRACKET, ATCH, SUB-FRAME, UPPER TO LOWER	MLWB
26 1904135	CROSSMEMBER ASSY, DRIVE AXLE, 10, 12 FRM	MLWB
27 1914811	CROSSMEMBER, TAG AXLE, FRONT	MLWB
28 1881051	BRACKET ASSY, MTG, SUB-FRM, RR, LWR, RH, 42FT MLWB	1
29 1866805	BRACKET ASSY, MTG, SUB-FRM, RR, LWR, LH, 42FT MLWB	1
30 1160043	GUSSET, TAG AXLE SUSP, FRONT C/M, 42 FT MLWB	2
31 1959527	FRAME RAIL, SET, 259 WB	42 FT W4RE
32 1928068	CROSSMEMBER, 3, 00 X 6, 25 X 35, 44	RC
33 1928076	CROSSMEMBER, 3, 00 X 9, 00 X 35, 44	RC
34 1928084	CROSSMEMBER ASSEMBLY, 8, 56 X 15, 00 X 35, 38RC	RC
35 1932821	OUTRIGGER, FRONT STRUCTURE, RIGHT HAND	RCDA
36 1932839	OUTRIGGER, FRONT STRUCTURE, LEFT HAND	RCDA
37 1943752	CHANNEL, SIDE, C/M, FRT, ENG, MTG	RCDA
38 1957315	SUBFRAME SET, REAR, LOWER	42 FT W4RE
39 1957323	SUBFRAME SET, REAR, UPPER	42 FT W4RE
40 1948819	ANGLE, REINFORCEMENT, TOW EYE	42 FT RCDA
41 1867399	BRACE ASSY, TRAILER HITCH	MLWB
42 1875327	CROSSMEMBER ASSY, FRONT ENGINE MTG 42FT	MLWB
43 1951417	CROSSMEMBER ASSY, FRONT	RCDA
44 1954551	CROSSMEMBER, FRONT SUSPENSION, FRONT	RCDA
45 1170943	TOW EYE, MODIFIED	1
46 1290006	SUPPORT ASSY, GENERATOR CROSSMEMBER	MLPP
47 1150887	BRACKET ASSY, C/M, SUPT, GEN, RH 8V92T	MLPP
48 1949445	SUBFRAME SET, FRONT	RCDA
49 1881127	CROSSMEMBER, TAG AXLE, REAR	MLWB



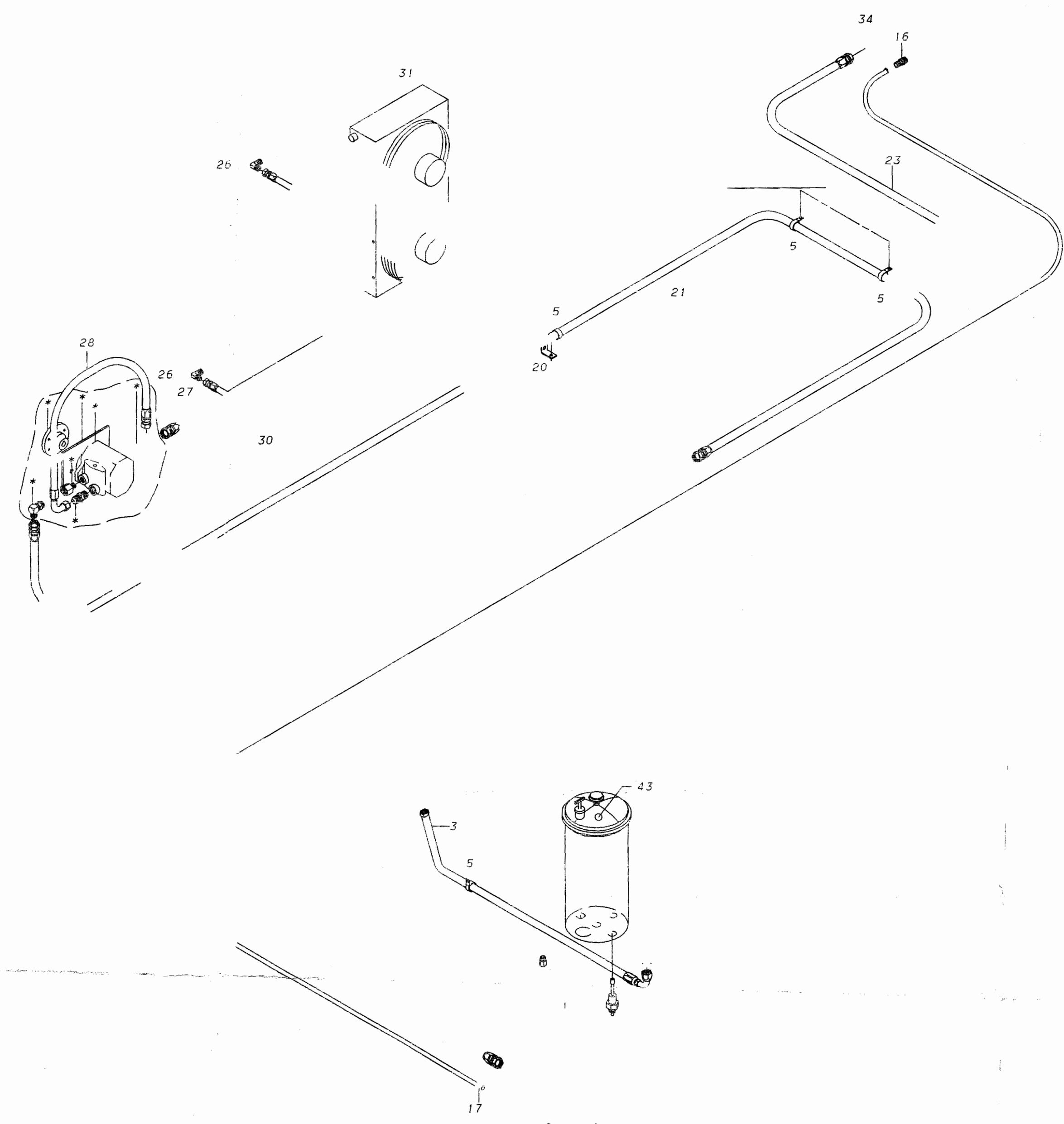
MATERIAL:			
FINISH:	RAW	PAINT	COLOR OR TYPE
TOLERANCE ON ALL DIMENSIONS IS, PLUS OR MINUS:			
SCALE:	.12		
DATE:	06/07/97	BY:	NYC
APP.:	04/07/97	BY:	KY
PROJECT NO.:	1884354 & 1927780		
REV.:		OR. APP. CON.	
DESIGNED BY:	BLUE BIRD CORPORATION	SCALE:	1:12
FOR:	FORT VALLEY, GEORGIA, U.S.A.		
EDIAGRAM, FRAME COMPONENTS			
			1995174

aklowler FRAME 1 JANUARY 14, 1998 17.11.43



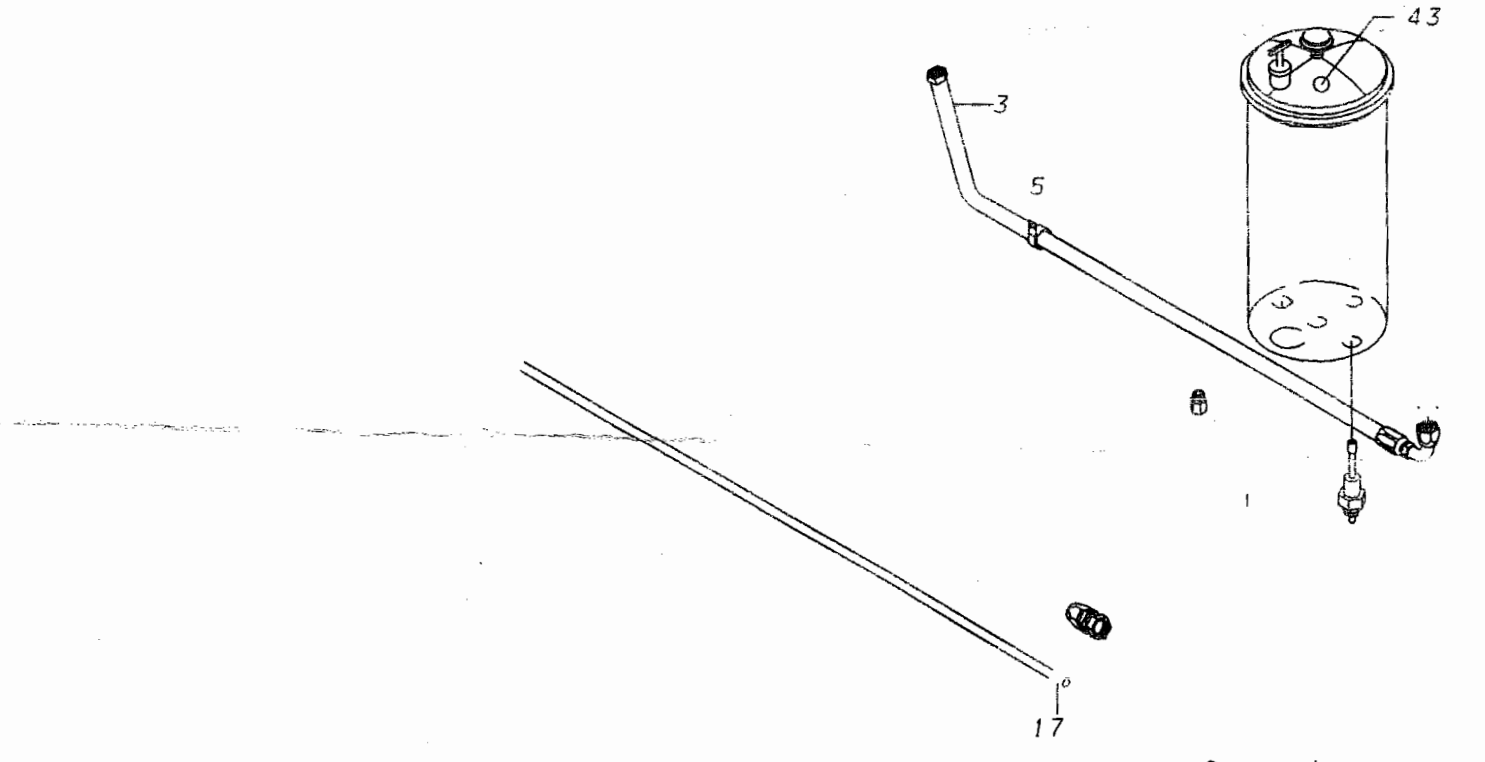
04RE WITH SERIES 60

40' WARE WITH SERIES 60



Part lists for 04RE WITH SERIES 60 and 40' WARE WITH SERIES 60. Columns include KEY PART-NO, DESCRIPTION, QTY, and REF(N). Lists items like TUBE ASSY, CLAMP LOOP, HOSE ASSY, MOTOR ASSY, LOCKWASHER, WASHER, NUT, UNION, KIT, CONNECTOR, FAN ASSY, INSERT, CLAMP HOSE, CONNECTOR, BRACKET, ATCH, BRACKET, ATCH, BRACKET, ATCH, PLATE, MTG, HOSE ASSY, ADAPTER, HOSE ASSY, CAPSCREW, HOSE ASSY, COOLER ASSY, VALVE, PULSE WIDTH MODULATOR, SUNSTRAND, ELBOW, RESERVOIR, ADAPTER, ELBOW, CAPSCREW, ELBOW, STREET, ELBOW, STREET, BRACKET, SUPPORT, HOSE, UPPER, HYD COOLER, HOSE, .625 ID X .906 OD, WH H10110, DECAL, HYDRAULIC SERVICE INSTRUCTION, ELBOW, SWIVEL, NUT, 90 DEG WITH 3/8 FPT, BRACKET, MTG, HYDRAULIC FAN MOTOR, TOP, BRACKET, MTG, HYDRAULIC FAN MOTOR, BOTTOM, ANGLE, MTG, HYDRAULIC FAN MOTOR, ANGLE, SUPT, HYDRAULIC FAN MOTOR, PUMP, HYDRAULIC SUNSTRAND, CONNECTOR, STRAIGHT THREAD 24-20 F50X, ADAPTER, 848-F50-16X16, PUMP, POWER STEERING, TRV, CAT-3116, ADAPTER, 90 ELBOW, 37 DEG FLARE, TP-5515X8X12, CAPSCREW, HEX HD, 1/4-20 X 2, GR 5, YEL ZN DICH, BRACKET, MTG, HYDRAULIC OIL COOLER, PLATE, MTG, PULSE WIDTH MODULATOR VALVE, CAPSCREW, HEX HD, 3/8-16 X 1, GR 8, YEL ZN DICH, NUT, HEX HD, 5/16-18, YEL ZN DICH, LOCKWASHER, SPLIT RING, 5/16, MED, YEL ZN DICH, NUT, HEX HD, 3/8-16, GR G, SM FLG LK, YEL ZNDICH, BRACKET, MTG, HYD RESVR & FUEL FLTR, ELBOW, STRAIGHT THREAD, MALE, CLAMP LOOP, 1.50, WASHER, FLAT, 5/16 X 3/4 X 5/64, YEL ZN DICH, LOCKWASHER, SPLIT RING, 1/2, LHT, YEL ZN DICH, LOCKWASHER, SPLIT RING, 3/8, MED, ZINC, LOCKWASHER, SPLIT RING, 1/4, MED, YEL ZN DICH, NUT, HEX HD, 1/4-20, ZINC, CAPSCREW, HEX HD, 3/8-16X1 1/4, GR8, YEL ZNDICH, CAPSCREW, HEX HD, 3/8-16X1 3/4, GR8, YEL ZNDICH, PLATE, MTG, HYDRAULIC OIL COOLER, BRACKET, RESERVOIR BRACE, HYD, CLAMP, TUBE, HYDRAULIC 1.00 OD, TUBE ASSY, HYD COOLER TO HYD RESERVOIR, CONNECTOR, 16HTX-S.

42' WARE WITH SERIES 60



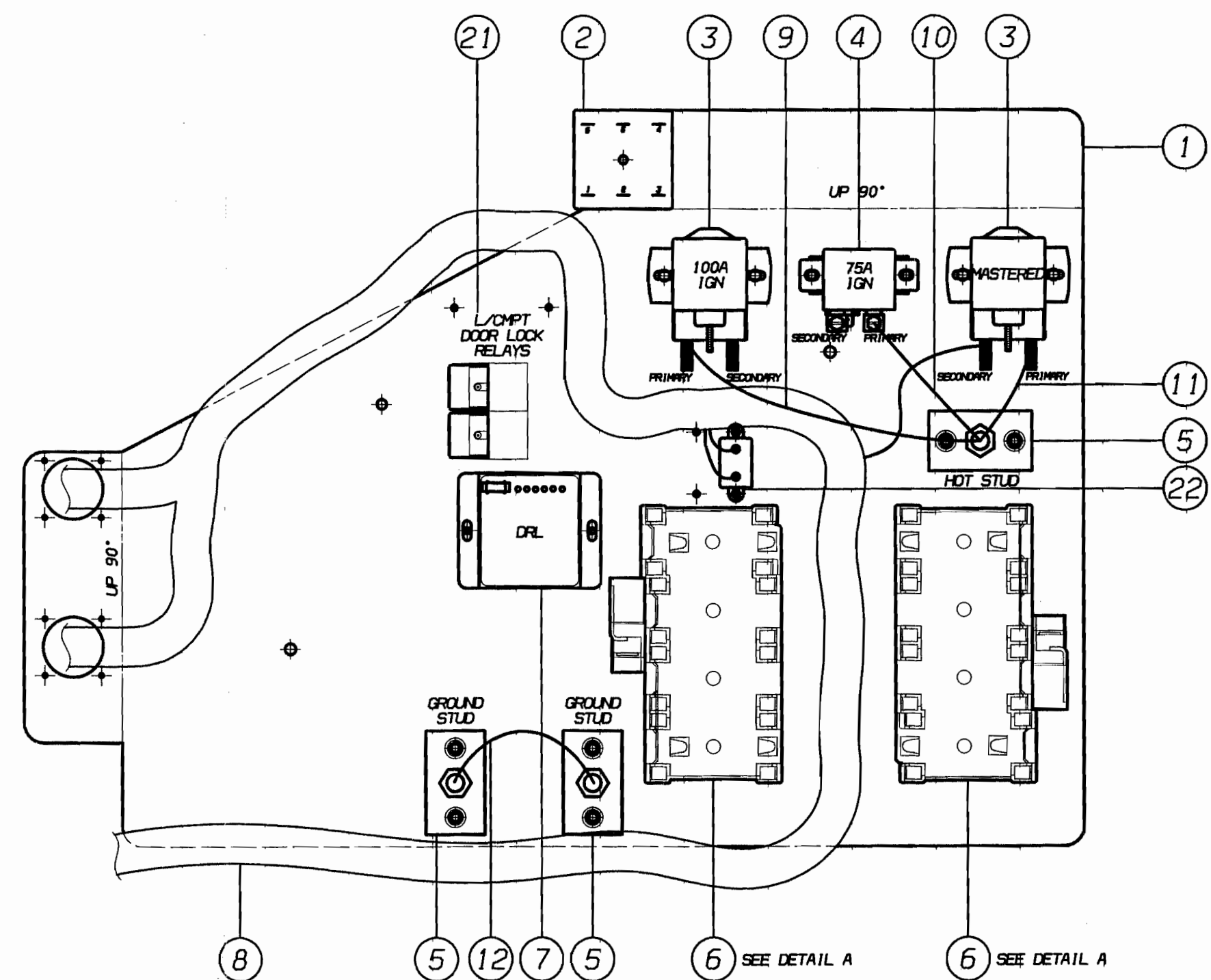
Part lists for 42' WARE WITH SERIES 60. Columns include KEY PART-NO, DESCRIPTION, QTY, and REF(N). Lists items like TUBE ASSY, CLAMP LOOP, HOSE ASSY, MOTOR ASSY, LOCKWASHER, WASHER, NUT, UNION, KIT, CONNECTOR, FAN ASSY, INSERT, CLAMP HOSE, CONNECTOR, BRACKET, ATCH, BRACKET, ATCH, BRACKET, ATCH, PLATE, MTG, HOSE ASSY, ADAPTER, HOSE ASSY, CAPSCREW, HOSE ASSY, COOLER ASSY, VALVE, PULSE WIDTH MODULATOR, SUNSTRAND, ELBOW, RESERVOIR, ADAPTER, ELBOW, CAPSCREW, ELBOW, STREET, ELBOW, STREET, BRACKET, SUPPORT, HOSE, UPPER, HYD COOLER, HOSE, .625 ID X .906 OD, WH H10110, DECAL, HYDRAULIC SERVICE INSTRUCTION, ELBOW, SWIVEL, NUT, 90 DEG WITH 3/8 FPT, BRACKET, MTG, HYDRAULIC FAN MOTOR, TOP, BRACKET, MTG, HYDRAULIC FAN MOTOR, BOTTOM, ANGLE, MTG, HYDRAULIC FAN MOTOR, ANGLE, SUPT, HYDRAULIC FAN MOTOR, PUMP, HYDRAULIC SUNSTRAND, CONNECTOR, STRAIGHT THREAD 24-20 F50X, ADAPTER, 848-F50-16X16, PUMP, POWER STEERING, TRV, CAT-3116, ADAPTER, 90 ELBOW, 37 DEG FLARE, TP-5515X8X12, CAPSCREW, HEX HD, 1/4-20 X 2, GR 5, YEL ZN DICH, BRACKET, MTG, HYDRAULIC OIL COOLER, PLATE, MTG, PULSE WIDTH MODULATOR VALVE, CAPSCREW, HEX HD, 3/8-16 X 1, GR 8, YEL ZN DICH, NUT, HEX HD, 5/16-18, YEL ZN DICH, LOCKWASHER, SPLIT RING, 5/16, MED, YEL ZN DICH, NUT, HEX HD, 3/8-16, GR G, SM FLG LK, YEL ZNDICH, BRACKET, MTG, HYD RESVR & FUEL FLTR, ELBOW, STRAIGHT THREAD, MALE, CLAMP LOOP, 1.50, WASHER, FLAT, 5/16 X 3/4 X 5/64, YEL ZN DICH, LOCKWASHER, SPLIT RING, 1/2, LHT, YEL ZN DICH, LOCKWASHER, SPLIT RING, 3/8, MED, ZINC, LOCKWASHER, SPLIT RING, 1/4, MED, YEL ZN DICH, NUT, HEX HD, 1/4-20, ZINC, CAPSCREW, HEX HD, 3/8-16X1 1/4, GR8, YEL ZNDICH, CAPSCREW, HEX HD, 3/8-16X1 3/4, GR8, YEL ZNDICH, PLATE, MTG, HYDRAULIC OIL COOLER, BRACKET, RESERVOIR BRACE, HYD, CLAMP, TUBE, HYDRAULIC 1.00 OD, TUBE ASSY, HYD COOLER TO HYD RESERVOIR, CONNECTOR, 16HTX-S.

NOTES:  
1. PARTS WITH \* ARE PART OF ASSEMBLY #1904127 AND ARE TO BE ASSEMBLED OFF LINE.  
2. ITEM #25 (1/2 INCH FITTINGS) IS TO BE INSTALLED AS THE PRESSURE LINE. ITEM #24 (7/16 INCH FITTINGS) IS TO BE INSTALLED AS THE RETURN LINE.

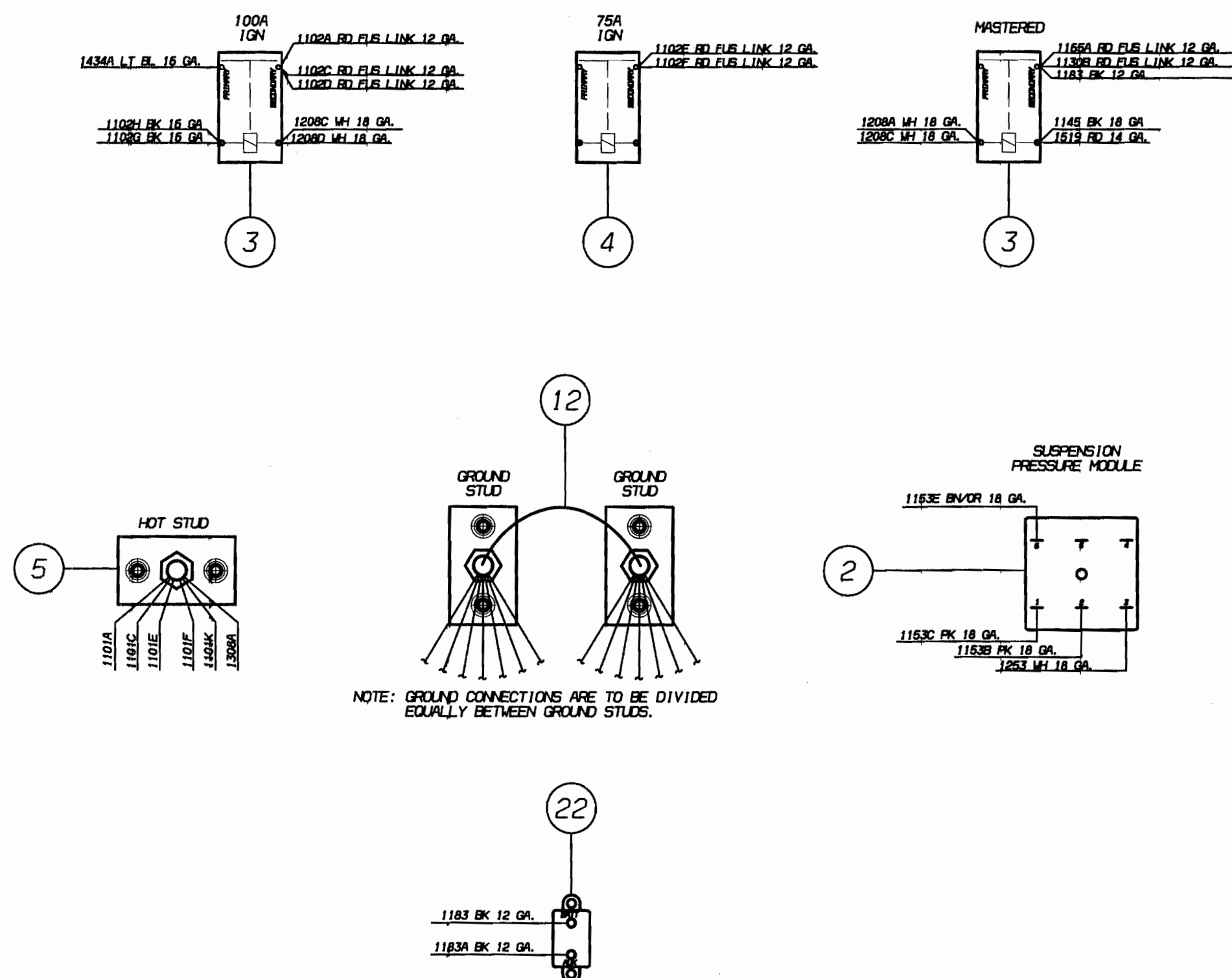
oklawler JANUARY 14, 1998 17.25.56

Material, Flat Size, Finish, Print, Prime, Other, Color or Type, Tolerance on all dimensions is plus or minus unless otherwise specified, Scale, Date, By, App, Scale, Date, App.





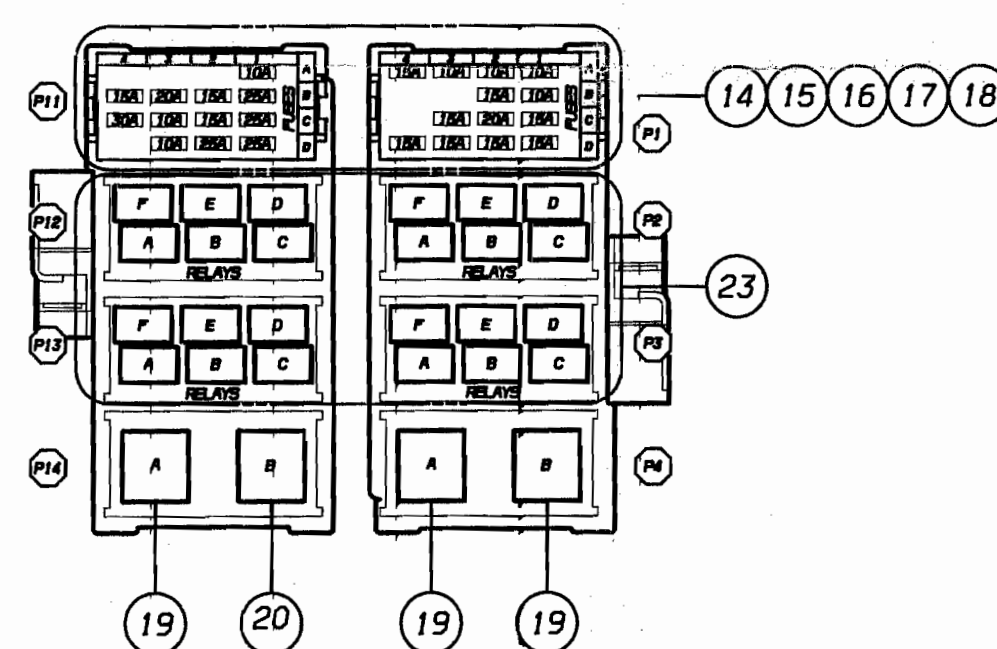
WIRING DETAILS



NOTE: GROUND CONNECTIONS ARE TO BE DIVIDED EQUALLY BETWEEN GROUND STUDS.

DETAIL A

FUSE & RELAY BLOCKS FROM HARNESS, WRG, ELEC PANEL, O/S ACS, FRONT WARE



FUSE CHART (P1)

LOCATION	AMP	DESCRIPTION
P1A1	10	STR COLLIN PAR
P1A2	--	SPARE
P1A3	--	SPARE
P1A4	--	SPARE
P1B1	25	MASTERED ACCESSORY
P1B2	15	LANDING LIGHT
P1B3	20	LIGHT LENS PAR
P1B4	15	SLIDE OUT/LEVELING JACKS MASTERED
P1C1	25	IGNITION
P1C2	15	DRL CTRL
P1C3	10	FUEL SENSOR
P1C4	30	HVAC
P1D1	25	DIR FLASHER
P1D2	25	*12 ACCESSORY
P1D3	10	ENGINE COMPARTMENT
P1D4	--	SPARE

FUSE CHART (P1)

LOCATION	AMP	DESCRIPTION
P1A1	10	SUSPENSION PRESSURE POWER
P1A2	10	AIR DRYER
P1A3	10	VIN IGN
P1A4	15	WIPER POWER
P1B1	10	PARK BRAKE
P1B2	15	BACKUP POWER
P1B3	--	SPARE
P1B4	--	SPARE
P1C1	15	TAIL LIGHTS PAR
P1C2	20	HEADLIGHT PAR
P1C3	15	DRL PAR
P1C4	--	SPARE
P1D1	15	HEAVY
P1D2	15	STOP LIGHT
P1D3	15	CLEARANCE LIGHTS
P1D4	15	SLIDE OUT/LEVELING JACKS CONSTANT

RELAY CHART (P12)

LOCATION	DESCRIPTION
P12A	LH LANDING LIGHTS
P12B	MIRROR SWITCH ILLUMINATION
P12C	HEADLIGHT WARNING
P12D	COOLANT FAN
P12E	CLEARANCE LIGHT SILLUET
P12F	RH LANDING LIGHTS

RELAY CHART (P2)

LOCATION	DESCRIPTION
P2A	LH WIPER LOW/PARK
P2B	LH WIPER HIGH
P2C	DRL PARK BRAKE CTRL
P2D	SLIDE OUT LANGUAGE DOOR INTERLOCK
P2E	RH WIPER HIGH
P2F	RH WIPER LOW/PARK

RELAY CHART (P13)

LOCATION	DESCRIPTION
P13A	STOP LIGHT
P13B	SLIDE OUT/LEVEL JACKS PARK BRAKE/NEUTRAL
P13C	LH DIRECTIONAL
P13D	RH DIRECTIONAL
P13E	ENGINE BRAKE LOADED
P13F	ENGINE BRAKE HI

RELAY CHART (P3)

LOCATION	DESCRIPTION
P3A	HEADLIGHT LO BEAM
P3B	PARK BRAKE INTERLOCK
P3C	NEUTRAL START
P3D	STOP SWITCH/OVERRIDE
P3E	CLEARANCE LIGHTS
P3F	HEAVY

COMPONENT CHART (P14)

LOCATION	DESCRIPTION
P14A	DRIVING LIGHTS
P14B	DIRECTIONAL FLASHER

COMPONENT CHART (P4)

LOCATION	DESCRIPTION
P4A	HEADLIGHT HI BEAM
P4B	PARK LIGHTS

COMPONENTS

ITEM NUMBER	PART NUMBER	DESCRIPTION	QUANTITY
1	1953371	PANEL, ELEC, O/S ACCESS, FRONT BA/OA/WA	1
2	1320340	RELAY, TIME DELAY, 60 SEC SSAC TSOB1160 SP	1
	2000073	SCREW, 1/4-20 X 1, D, HEX HD, YEL ZN DICH	1
3	0932012	SOLENOID, 100-AMP	2
	0659979	NUT, HEX, FLANGE SER, 1/4-20, YEL ZN DICH	4
	2000784	SCREW, MACH, 1/4-20 X 1/2, FHI, TRUSS HD, YEL ZN DICH	4
4	0004394	SOLENOID, 75A, W/DIODE, BOSCH	1
	1268119	SCREW, 1/4-20 X 1/2, FHI, PAN HD, YEL ZN DICH	2
5	0553131	TERMINAL, BAT CABLE, JUNCTION, NO 10148	3
	2000826	SCREW, MACH, 1/4-20 X 3/4, FHI, TRUSSHD, YEL ZN DICH	6
	0659979	NUT, HEX, FLANGE SER, 1/4-20, YEL ZN DICH	6
	2001451	NUT, HEX HD, 3/8-16, YELLOW DICHROMATE	3
6	1953165	BASE, MTG, RELAY/FUSE BLK, 4 POSITION RCDA	2
7	0007505	MODULE, ASSY, DAYTIME RUNNING, LAMP	1
	1334689	SCREW, 10-32 X 3/8, F, FHI, PAN HD, YEL ZN DICH	2
8	0007360	HARNESS, WRG, ELEC PANEL, O/S ACS, FRONT WARE	1
	1563816	SCREW, 6-32 X 3/8, F, FHI, OVAL CNK, YEL ZN DICH	12
9	1960756	CABLE ASSY, 100A SOL, F/ELEC PNL BARE/OARE/WARE	1
10	1960764	CABLE ASSY, 75A SOL, F/ELEC PNL BARE/OARE/WARE	1
11	1960772	CABLE ASSY, MAST SOL, F/ELEC PNL BARE/OARE/WARE	1
12	1985183	CABLE ASSY, GND, F/ELEC PNL BA/OA/WARE	1
(N1) 13	1653948	TIE, CABLE, NYLON, PUSH-MOUNT	5
14	1953231	FUSE, MINI, 30 AMP RCDA	1
15	1953199	FUSE, MINI, 25 AMP RCDA	4
16	1953215	FUSE, MINI, 20 AMP RCDA	2
17	1953223	FUSE, MINI, 15 AMP RCDA	11
18	1953207	FUSE, MINI, 10 AMP RCDA	7
19	1869017	RELAY, POTTER-BRUMFIELD, WF4-15F11-501	3
20	1868025	FLASHER, TURN/HAZZARD WARNING	1
21	1868017	RELAY, POTTER BRUMFIELD, WF4-15F11-501	2
	1334689	SCREW, 10-32 X 3/8, F, FHI, PAN HD, YEL ZN DICH	2
22	1361690	BREAKER, CIRCUIT, 20A, HERMETIC SEAL, W/TABS	1
	1334689	SCREW, 10-32 X 3/8, F, FHI, PAN HD, YEL ZN DICH	2
23	1746387	RELAY, MICRO	24

NI - NOT ILLUSTRATED

MATERIAL:

PLAT SIZE:

RAW  PAINT  COLOR OR TYPE

FINISH  OTHER

BLUE BIRD CORPORATION  
PORT VALLEY GEORGIA, U.S.A.

PANEL ASSEMBLY, ELECTRICAL, OUTSIDE ACCESS.  
FRONT, WITH COMPONENTS WARE

0012310

0007819

0007819 - EPANEL ASSY, ELEC, O/S ACS, FRONT, W/C/WCS WARE 125358300R/W/V