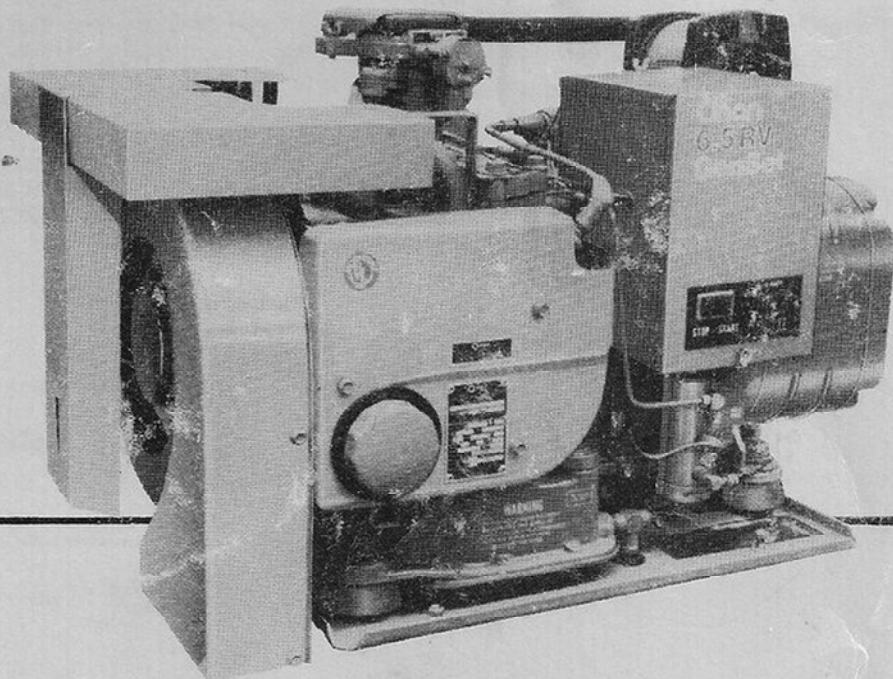


# Parts Manual

6.5

NH-RV

GenSet



940-0222  
4-81 (SPEC J-P)  
Replaces  
10-79 (Spec J-N)

# GENERAL INFORMATION

## INSTRUCTIONS FOR ORDERING REPAIR PARTS

For parts or service, contact the dealer from whom you purchased this equipment or refer to your Nearest Authorized Onan Parts and Service Center.

To avoid errors or delay in filling your parts order, please furnish all information requested.

Always refer to the nameplate on your unit.

1. Always give the MODEL, SPEC NO. and SERIAL NO.

The image shows a rectangular nameplate form with the Onan logo at the top. Below the logo, there are two rectangular boxes for handwritten information. The first box contains the text "65NH3CR-1600 4P" and is labeled "MODEL AND SPEC NO." below it. The second box contains the text "CR3366 1837" and is labeled "SERIAL NO." to its left. The form has a decorative border with circular elements in the corners. A small "M-1149" label is visible at the bottom right of the form.

For handy reference, insert "YOUR" nameplate information in the spaces above.

2. Do not order by reference number; always use part number and description.
3. Give the part number, description and quantity needed of each item. If an older part cannot be identified, return the part prepaid to your dealer or nearest Onan Parts and Service Center. Print your name and address plainly on the package. Write a letter to the same address stating the reason for returning the part.
4. State definite shipping instructions. Any claim for loss or damage to your unit in transit should be filed promptly against the transportation company making the delivery. Shipments are complete unless the packing list indicates items are back ordered.

Prices are purposely omitted from this Parts Catalog due to the confusion resulting from fluctuating costs, import duties, sales taxes, exchange rates, etc.

For current parts prices, consult your Onan Dealer, Distributor or Parts and Service Center.

"En esta lista de partes los precios se omiten de proposito, ya que bastante confusion resulto de fluctuaciones de los precios, derechos aduanales, impuestos de venta, cambios extranjeros, etc."

Consiga los precios vigentes de su distribuidor de productos "ONAN."

# INDEX

	LOCATION
INTRODUCTION .....	A4
GENERATOR SET DATA TABLE .....	A4
<b>STANDARD PARTS SECTION</b>	
Block, Cylinder .....	A6,A7
Breaker Box, Ignition (160-1210) .....	B9
Camshaft .....	A10
Carburetor Parts .....	B4
Cleaner, Air - Spec J .....	A14
Cleaner, Air - Begin Spec K .....	B1
Control - Spec J .....	B11
Control - Begin Spec K .....	B12,B13
Crankshaft .....	A10
Exhaust System - Spec J .....	B6
Exhaust System - Begin Spec K .....	B7
Flywheel .....	A10
Fuel System .....	B2,B3
Gearcase .....	A12,A13
Generator .....	C2,C3
Governor .....	A12,A13
Housing, Air .....	B10
Ignition System .....	B8
Mounting Hardware, Generator Set .....	A8,A9
Oil Base .....	A8,A9
Oil System .....	A5
Piston and Rod .....	A11
Pump Parts, Fuel (149-1541) .....	B5
Service Kits and Miscellaneous .....	C4
<b>OPTIONAL PARTS SECTION</b>	
Control, Remote Start .....	D3
Preheater, Carburetor Air .....	D2

940-0222  
NH PARTS CATALOG (RV)

INTRODUCTION

This Catalog applies to the Standard NH Recreational Vehicle Generator Set. Parts are arranged in groups of related items. Each illustrated part is identified by a reference number corresponding to the same reference number in the parts list for that group. Parts illustrations are typical. Using the *Model* and *Spec No.* from the nameplate, select parts from this Catalog that apply to your set. Unless otherwise mentioned in the description, parts are interchangeable between models. Right and left sides are determined by *facing* the engine end (front) of the set.

GENERATOR SET DATA TABLE

MODEL AND SPEC NO.	TYPE	WATTS	VOLTS	HERTZ	WIRE	PHASE
5.0 NH-53CR/*	Remote	5000	120/240	50	**	Single
5.5 NH-53CR/*	Remote	5500	120/240	50	**	Single
6.5 NH-3CR/*	Remote	6500	120/240	60	**	Single

\* - The Specification letter advances (A to B to C, etc.) with manufacturing changes.

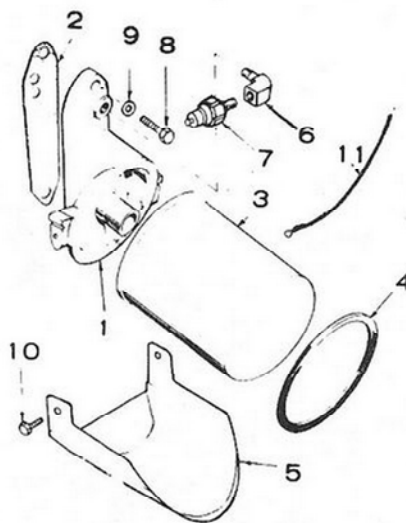
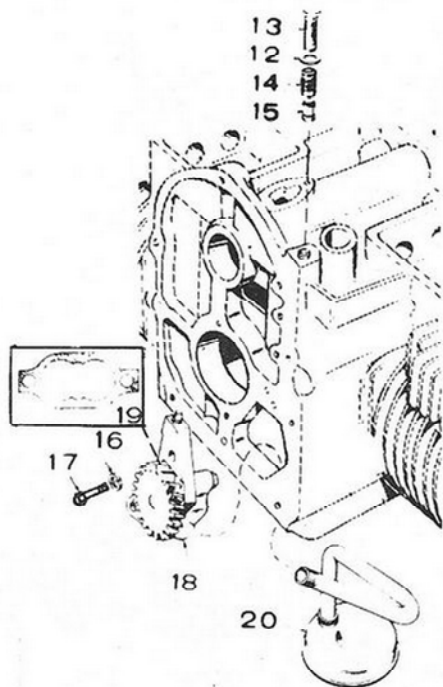
\*\* - Set is reconnectable for 120 volt, 2 wire; 240 volt, 2 wire; or 120/240 volt, 3 wire service.

**NOTE:** The letter R in the Model and Spec denotes Electric Start with Start-Stop at both the Set and the Remote Control.

STANDARD ENGINE PARTS SECTION

This section contains the engine parts used on standard engines listed in the Engine Data table.

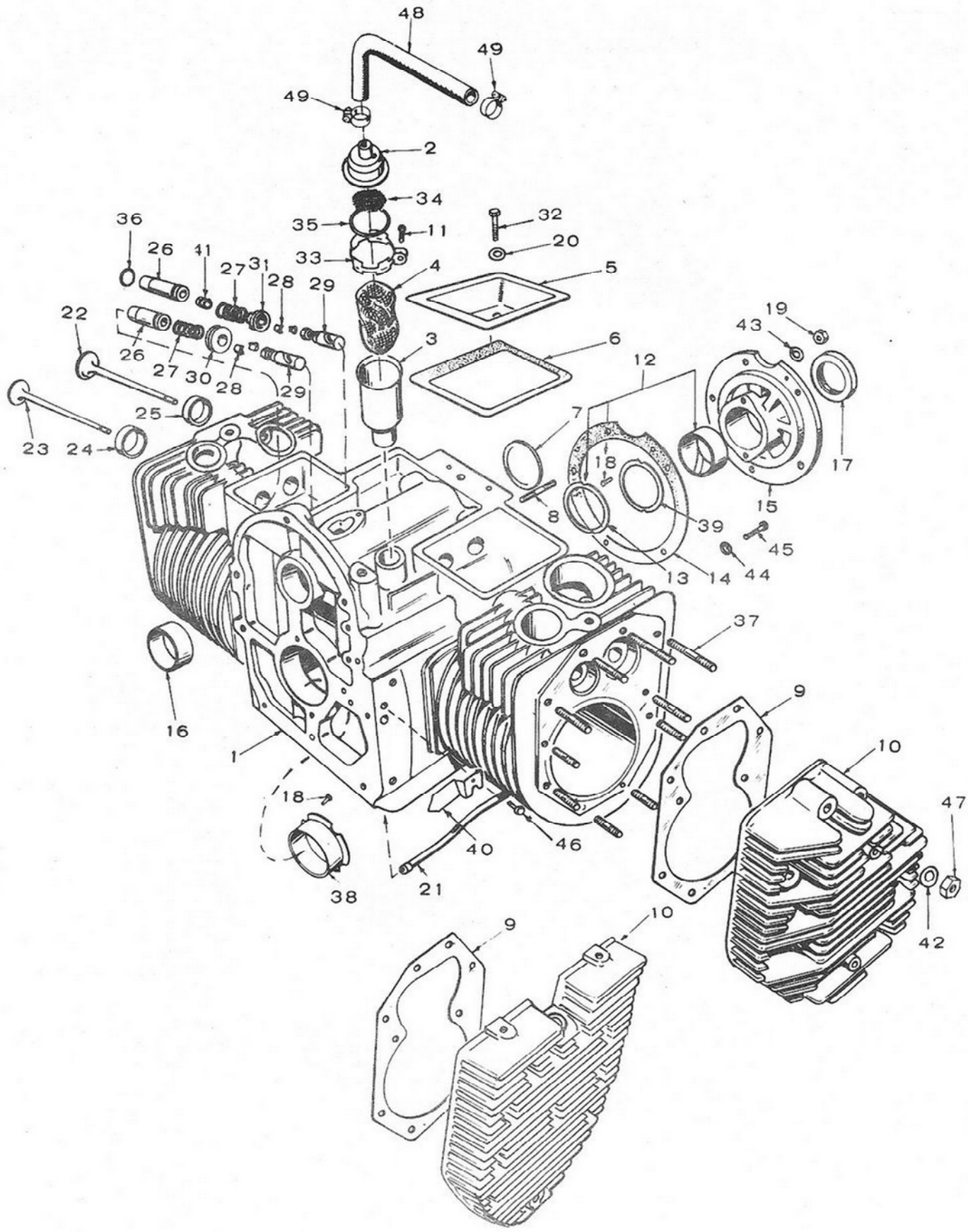
# OIL SYSTEM



REF. NO.	PART NO.	QTY. USED	PART DESCRIPTION
1	122-0320	1	Adapter, Oil Filter
2	122-0321	1	Gasket, Oil Filter Adapter Mounting
3	122-0323	1	Filter, Oil - Spin-on
4	122-0347	1	Seal, Air- Oil Filter
5	122-0360	1	Drain, Oil Filter
6	502-0053	1	Elbow, Street - 45°
7	SWITCH, LOW OIL PRESSURE		
	309-0237	1	Spec J
	309-0322	1	Begin Spec K
8	800-0028	2	Screw, Cap - Hex Head (5/16- 18 x 1")
9	526-0065	2	Washer, Flat - Copper (21/64" ID x 9/16" OD x 1/16")
10	815-0194	2	Screw, Tapping - Hex Head (#10-32 x 3/8")

REF. NO.	PART NO.	QTY. USED	PART DESCRIPTION
11	LEAD, ELECTRICAL - LOW OIL PRESSURE SWITCH		
	336-2379	1	Spec J
	336-3377	1	Begin Spec K
12	526-0066	1	Washer, Flat - Copper (25/64" ID x 9/16" OD x 1/16")
13	801-0050	1	Screw, Cap - Hex Head (3/8-24 x 1")
14	120-0140	1	Spring, Oil By-Pass Valve
15	120-0398	1	Valve, Oil By-Pass
16	850-0040	2	Washer, Lock - Spring (1/4")
17	800-0007	2	Screw, Cap - Hex Head (1/4-20 x 1")
18	120-0491	1	Pump, Oil (Components Not Sold Separately)
19	120-0161	1	Kit, Gasket - Oil Pump
20	CUP, OIL PUMP INTAKE - (Includes Screw Pipe and Cup)		
	120-0400	1	Spec J and K
	120-0413	1	Begin Spec M

# CYLINDER BLOCK



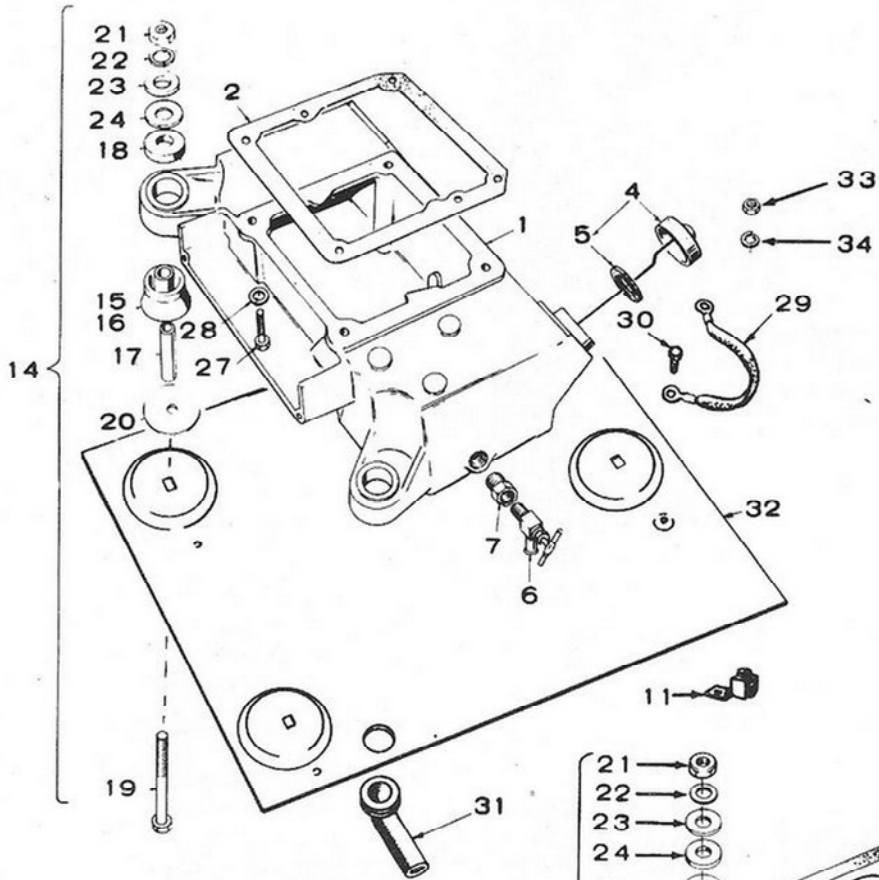
A6

# CYLINDER BLOCK

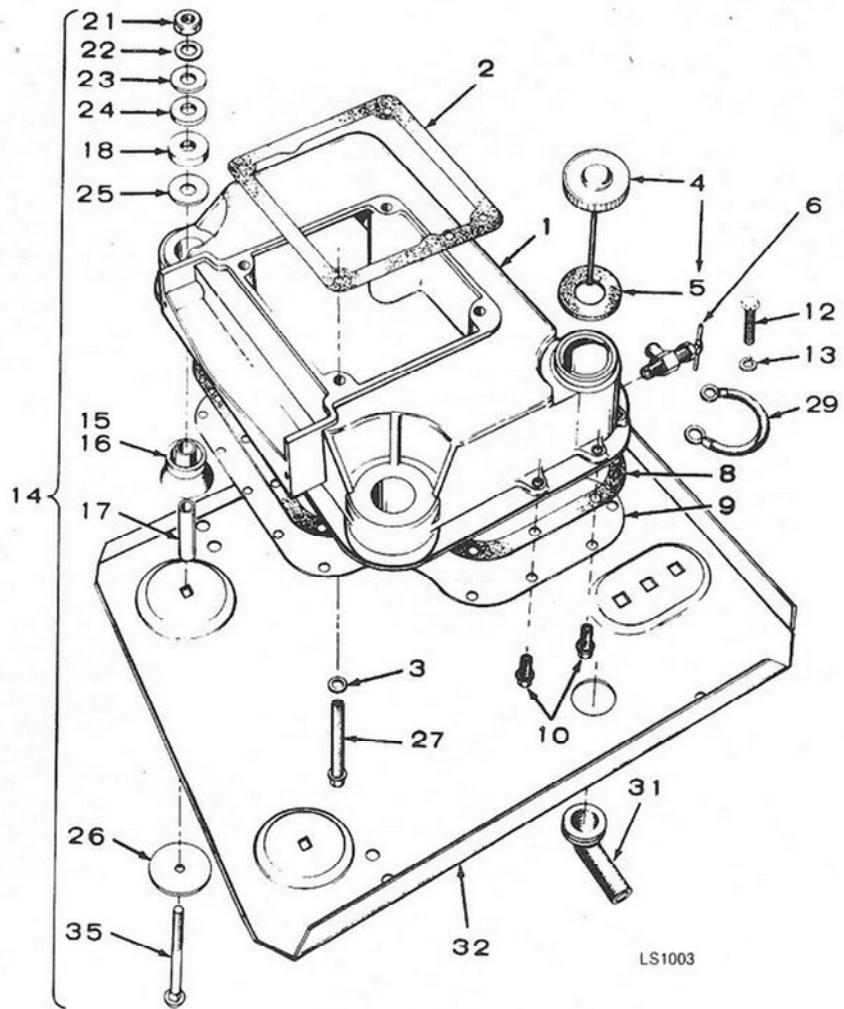
REF. NO.	PART NO.	QTY. USED	PART DESCRIPTION	REF. NO.	PART NO.	QTY. USED	PART DESCRIPTION
1	110-2340	1	Block Assembly, Cylinder (Includes Parts Marked *)	25	INSERT, VALVE SEAT — INTAKE		
2	123-0954	1	Cap and Valve, Breather	110-1933		2	*Standard
3	123-0952	1	*Tube, Breather	110-1933-02		2	.002" Oversize
4	BAFFLE, BREATHER			110-1933-05		2	.005" Oversize
	123-0865	1	Spec J	110-1933-10		2	.010" Oversize
	123-1417	1	*Begin Spec K	110-1933-25		2	.025" Oversize
5	110-1624	2	Cover, Valve	26	*GUIDE, VALVE		
6	110-1720	2	Gasket, Valve Cover Mounting	110-1939		2	Exhaust
7	517-0048	1	*Plug, Expansion	110-2281		2	Intake
8	520-0736	5	*Stud, Bearing Plate Mounting	27	110-0539	4	Spring, Valve
9	110-1731	2	Gasket, Cylinder Head Mounting	28	110-0639	8	Lock, Valve Spring
10	HEAD, CYLINDER			29	TAPPET, VALVE		
			Spec J through N	115-0006		4	Standard
	110-1912	1	Right Side	115-0006-05		4	.005" Oversize
	110-1913	1	Left Side	30	110-0904	2	Rotator, Valve
			Begin Spec P	31	110-0893	2	Retainer, Valve Spring
	110-2713	2	Left and Right Side	32	800-0011	2	Screw, Cap - Hex Head (1/4-20 x 2" lg)
11	809-0035	1	Screw, Tapping - Round Head (#8 x 3/4" lg)	33	123-0951	1	Clamp, Loop - Breather Tube Cap
12	BEARING, CRANKSHAFT REAR			34	123-0958	2	Screen, Breather Tube
	101-0450	1	*Standard	35	509-0117	1	Seal, "O" Ring - Breather Tube
	101-0450-02	1	.002" Undersize	36	110-0068	2	*Gasket, Valve Guide - Intake
	101-0450-10	1	.010" Undersize	37	STUD, CYLINDER HEAD MOUNTING		
	101-0450-20	1	.020" Undersize	520-0717		8	3/8 x 1-7/8" lg
	101-0450-30	1	.030" Undersize	520-0773		12	3/8 x 2-9/16" lg
13	104-0575	2	*Washer, Thrust - Crankshaft Bearing	38	BEARING, SLEEVE-FLANGED CRANKSHAFT		
14	101-0415	1	*Gasket, Bearing Plate	101-0432		1	*Standard
15	101-0439	1	*Plate, Bearing - Rear	101-0432-02		1	.002" Undersize
16	101-0405	2	*Bearing, Camshaft	101-0432-10		1	.010" Undersize
17	509-0041	1	Seal, Oil - Crankshaft	101-0432-20		1	.020" Undersize
18	516-0072	4	*Pin, Bearing Stop	101-0432-30		1	.030" Undersize
19	104-0091	5	*Nut, Hex (3/8-24)	39	104-0776	As Req.	Shim, Crankshaft Thrust
20	526-0063	2	Washer, Flat (Copper) - (17/64" ID x 7/16" OD x 1/32" Thk)	40	160-1190	1	Pointer, Timing
21	120-0680	1	*Tube, Oil - Crankcase	41	509-0090	2	Seal, Intake Valve
22	VALVE INTAKE			42	526-0250	20	Washer, Flat (.407" ID x 1" OD x 1/8" Thk)
	110-1718	2	Begin Spec K	43	526-0251	5	Washer, Flat (.406" ID x .688" OD x .1345" Thk)
	110-1974	2	Spec J	44	526-0066	2	*Washer, Flat (Copper) - 25/64" ID x 9/16" OD x 1/16" Thk)
23	110-1719	2	Valve, Exhaust	45	800-0046	2	*Screw, Cap - Hex Head (3/8-16 x 1/2" lg)
24	INSERT, VALVE SEAT — EXHAUST			46	821-0010	1	Screw, Self-Locking - Hex Washer Head (1/4-20 x 1/2" lg)
	110-1716	2	*Standard	47	104-0091	20	Nut, Hex (3/8-24)
	110-1716-02	2	.002" Oversize	48	TUBE, BREATHER		
	110-1716-05	2	.005" Oversize	503-0761		1	Spec J
	110-1716-10	2	.010" Oversize	503-0857		1	Begin Spec K
	110-1716-25	2	.025" Oversize	49	CLAMP, BREATHER TUBE		
				503-0760		2	Spec J
				503-0770		2	Begin Spec K

\* - Parts Included in 110-2340 Cylinder Block Assembly.

# OIL BASE & MOUNTING HARDWARE



LS1031



LS1003

## A8

940-0222 (APRIL 1981)



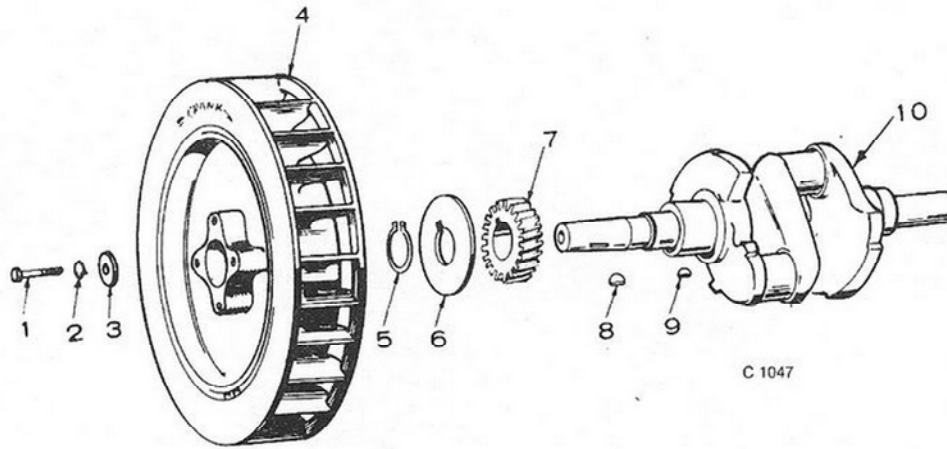
## OIL BASE & MOUNTING HARDWARE

REF NO.	PART NO.	QTY. USED	PART DESCRIPTION	REF. NO.	PART NO.	QTY. USED	PART DESCRIPTION
1	BASE, OIL			21	#NUT, HEX (7/16" - 14)		
	102-0801	1	Spec J and K		862-0004	3	Spec J and K
	102-0957	1	Begin Spec M (Includes Parts Marked *)		862-0004	2	Engine End
2	102-0693	1	*Gasket, Oil Base		862-0004	1	Generator End (Left Side)
3	526-0013	4	Washer, Flat (25/64" ID x 1" OD x 1/16")		862-0004	1	Generator End (Right Side)
4	CAP AND INDICATOR OIL FILL			22	#WASHER, LOCK - EIT (7/16")		
	123-0489	1	Spec J and K		856-0012	3	Spec J and K
	123-1400	1	Begin Spec M		856-0012	2	Engine End
5	123-0191	1	Gasket, Oil Fill Cap		856-0012	1	Generator End (Left Side)
6	504-0092	1	Valve, Oil Drain		856-0012	1	Generator End (Right Side)
7	505-0019	1	Reducer, Pipe (1/2" x 3/8") - Spec J and K	23	#WASHER, FLAT (29/64" ID x 1-1/2" OD x 1/8")		
8	102-0953	1	*Gasket, Oil Pan Mounting - Begin Spec M		526-0014	3	Spec J and K
9	102-0889	1	*Pan, Oil Base - Begin Spec M		526-0014	2	Engine End
10	821-0018	20	*Screw, Cap - HWH (1/4-20 x 5/8") - Begin Spec M		526-0014	1	Generator End (Left Side)
11	332-0142	1	Terminal, Solderless - Ground		526-0014	1	Generator End (Right Side)
12	800-0047	1	Screw, Cap - Hex Head (3/81-6 x 5/8") - Begin Spec M	24	#WASHER, FLAT (5/8" ID x 1-1/2" OD x 1/16")		
13	856-0010	1	Washer, Lock - EIT (3/8") - Begin Spec M		526-0198	6	Spec J and K
14	PACKAGE, HARDWARE MOUNTING (Includes Parts Marked #)				526-0198	4	Engine End
	402-0435	1	Spec J and K		526-0198	2	Generator End (Left Side)
	402-0477	1	Engine End		526-0198	1	Generator End (Right Side)
	402-0478	1	Generator End (Left Side)	25	#WASHER, FLAT		
	402-0480	1	Generator End (Right Side)		526-0286	1	Generator End (Left Side) - Begin Spec M
15	#CUSHION, VIBRATION - ENGINE END				526-0286	1	Generator End (Right Side) - Begin Spec M
	402-0283	2	Spec J and K	26	856-0016	1	#Washer, Lock - EIT (5/8") - Right Side Generator End - Begin Spec M
	402-0283	2	Begin Spec M	27	SCREW, CAP - HEX HEAD		
16	#CUSHION, VIBRATION - GENERATOR END				800-0051	4	3/8-16 x 1-1/4" - Spec J and K
	402-0284	1	Spec J and K		800-0064	4	3/8-16 x 4-1/2" - Begin Spec M
	402-0283	1	Left Side	28	850-0050	4	Washer, Lock - Spring (3/8")
	402-0283	1	Right Side	29	STRAP, GROUND		
17	#SPACER, SLEEVE				337-0049	1	Spec J and K
	402-0290	3	Spec J and K		337-0418	1	Begin Spec M
	402-0290	2	Engine End	30	815-0350	1	Screw, Tapping - Slotted Head (#10-32 x 3/8")
	402-0290	1	Generator End (Left Side)		122-0345	1	Hose, Oil Drain - Optional
	402-0290	1	Generator End (Right Side)	32	PLATE, MOUNTING		
18	#SNUBBER				403-1219	1	Spec J and K
	402-0282	3	Spec J and K		403-1484	1	Begin Spec M
	402-0282	2	Engine End	33	862-0001	1	Nut, Hex (1/4-20) - Spec J and K
	402-0282	1	Generator End (Left Side)		856-0008	1	Washer, Lock - EIT (5/16") - Spec J and K
	402-0282	1	Generator End (Right Side)	34	856-0008	1	Washer, Lock - EIT (5/16") - Spec J and K
19	800-0082	3	#Screw Cap - Hex Head (7/16-14 x 3-3/4") - Spec J and K	35	#BOLT, CARRIAGE (7/16-14 x 3-1/2") - Begin Spec M		
20	526-0195	3	#Washer, Flat (29/64" ID x 3-1/4" OD x 1/8") - Spec J and K		816-0206	2	Engine End
					816-0206	1	Generator End (Left Side)
					816-0206	1	Generator End (Right Side)

\* - Parts Included in 102-0957 Oil Base

# - Parts Included in Hardware Mounting Package

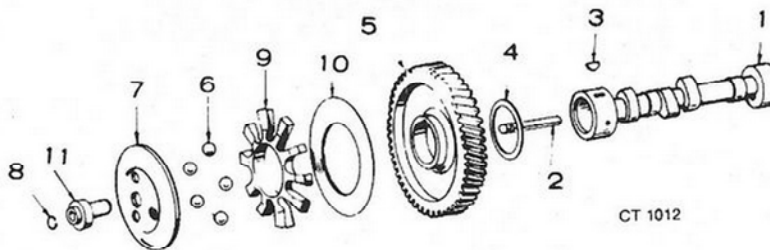
## CRANKSHAFT AND FLYWHEEL



C 1047

REF NO.	PART NO.	QTY. USED	PART DESCRIPTION
1	104-0170	1	Screw, Cap - Hex Head (7/16-14 x 4" lg)
2	850-0055	1	Washer, Lock - Spring (7/16")
3	526-0262	1	Washer, Flat (15/32" ID x 1-1/4" OD x 1/4" Thk)
4	134-3333	1	Flywheel
5	518-0014	1	Ring, Retaining
6	104-0043	1	Washer, Gear
7	104-0032	1	Gear, Crankshaft
8	515-0227	1	Kit, Key
9	515-0001	1	Key, Woodruff
10	104-1314	1	Crankshaft

## CAMSHAFT

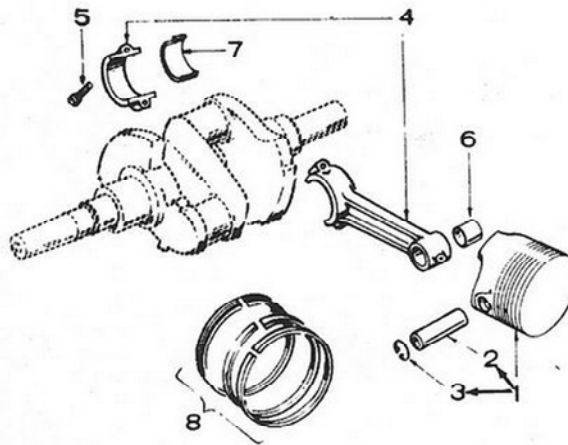


CT 1012

REF NO.	PART NO.	QTY. USED	PART DESCRIPTION	REF. NO.	PART NO.	QTY. USED	PART DESCRIPTION
1	105-0396	1	Camshaft (Includes Center Pin)	6	510-0015	10	Ball, Fly - Governor
2	150-0075	1	Pin, Camshaft	7	150-1520	1	Cup, Governor
3	515-0001	1	Key, Camshaft Gear	8	150-0078	1	Ring, Retaining
4	105-0541	1	Washer, Thrust	9	150-1257	1	*Spacer, Flyball
5	105-0332	1	Gear Assembly, Camshaft (Includes Parts Marked *)	10	150-0077	1	*Plate, Flyball
				11	150-1519	1	Hub, Governor Cup

\* - Parts Included in the 105-0332 Camshaft Gear Assembly.

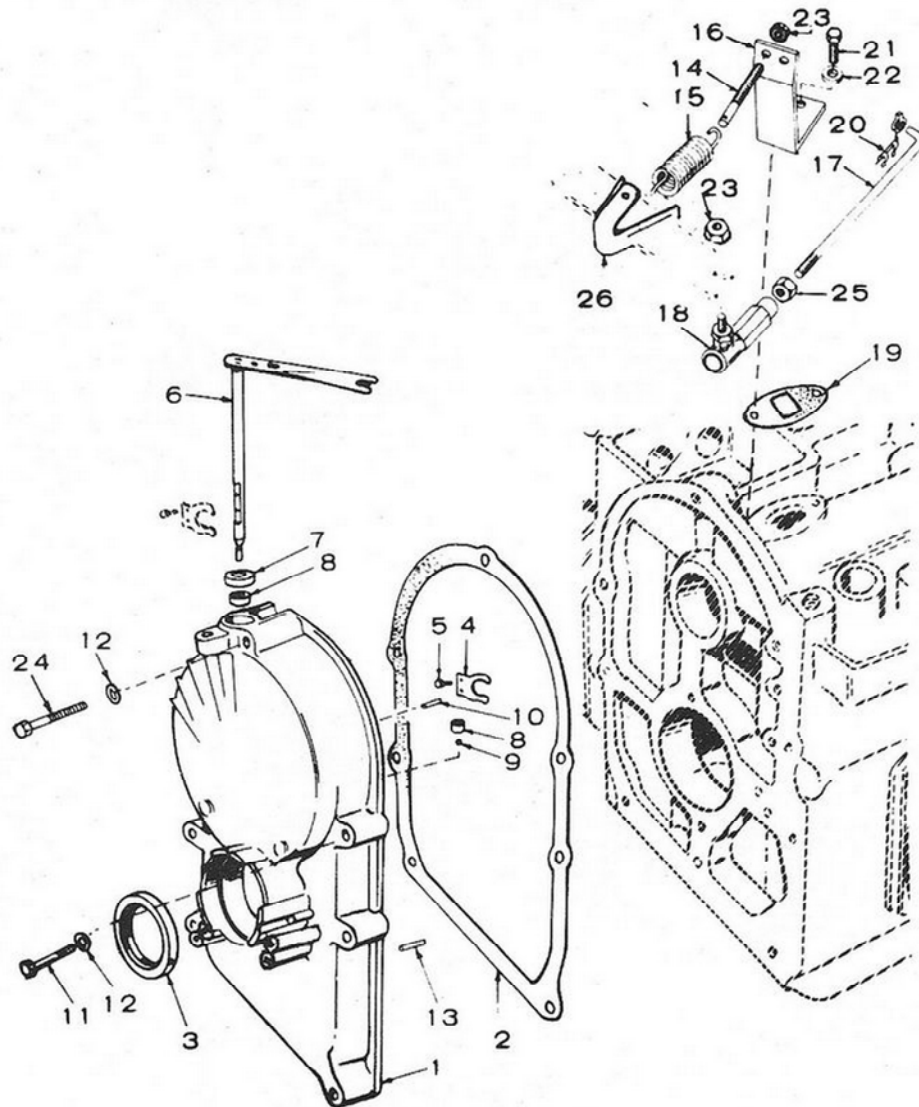
# PISTON AND ROD



CT1013

REF NO.	PART NO.	QTY. USED	PART DESCRIPTION	REF NO.	PART NO.	QTY. USED	PART DESCRIPTION
1	PISTON AND PIN (Includes Retaining Rings)			7	BEARING, HALF-CONNECTING ROD		
			Spec J through N	114-0188	4		Standard
	112-0180	2	Standard	114-0188-02	4		.002" Undersize
	112-0180-05	2	.005" Oversize	114-0188-10	4		.010" Undersize
	112-0180-10	2	.010" Oversize	114-0188-20	4		.020" Undersize
	112-0180-20	2	.020" Oversize	114-0188-30	4		.030" Undersize
	112-0180-30	2	.030" Oversize	8	RING SET, PISTON		
	112-0180-40	2	.040" Oversize				Spec J through N
			Begin Spec P	113-0165	2		Standard
	112-0185	2	Standard	113-0165-05	2		.005" Oversize
	112-0185-05	2	.005" Oversize	113-0165-10	2		.010" Oversize
	112-0185-10	2	.010" Oversize	113-0165-20	2		.020" Oversize
	112-0185-20	2	.020" Oversize	113-0165-30	2		.030" Oversize
	112-0185-30	2	.030" Oversize	113-0165-40	2		.040" Oversize
	112-0185-40	2	.040" Oversize				Begin Spec P
2	112-0112	2	Pin, Piston	113-0203	2		Standard
3	518-0294	4	Ring, Retaining - Piston Pin	113-0203-05	2		.005" Oversize
4	114-0203	2	Rod Assembly, Connecting	113-0203-10	2		.010" Oversize
5	805-0010	4	Bolt, Place	113-0203-20	2		.020" Oversize
6	114-0036	2	Bushing, Piston Pin	113-0203-30	2		.030" Oversize
				113-0203-40	2		.040" Oversize

# GEARCASE AND GOVERNOR



A12

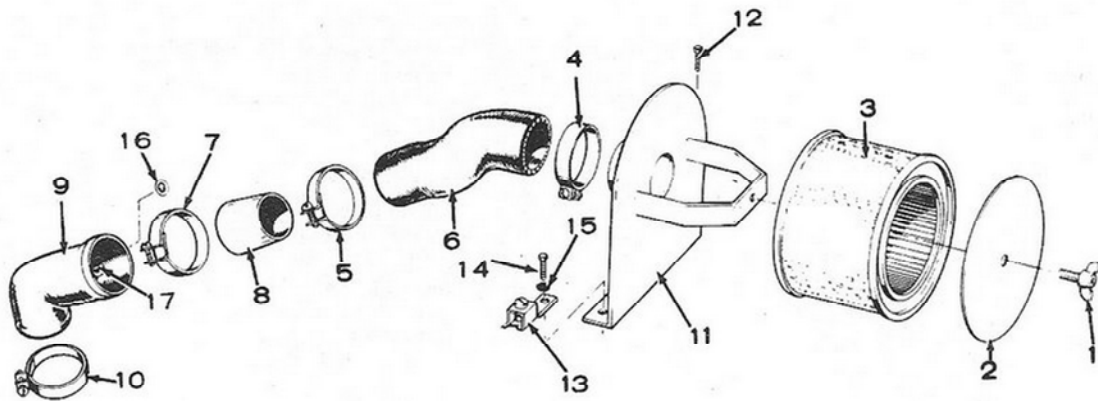
940-0222 (APRIL 1981)

# GEARCASE AND GOVERNOR

REF NO.	PART NO.	QTY. USED	PART DESCRIPTION
1	103-0667	1	Cover Assembly, Gear (Includes Parts Marked *)
2	103-0408	1	Gasket, Gearcase Mounting
3	509-0040	1	*Seal, Oil
4	150-1187	1	*Yoke, Governor
5	815-0046	2	*Screw, Machine - Pan Head (#8-32 x 3/8" lg)
6	150-1542	1	*Arm and Shaft Assembly, Governor
7	509-0008	1	*Seal, Oil
8	510-0013	2	*Bearing, Needle
9	510-0014	1	*Bearing, Ball - Governor Shaft
10	516-0130	1	*Pin, Governor Cup Stop
11	800-0032	4	Screw, Cap - Hex Head Gearcase Mounting (5/16-18 x 1-3/4" long)
12	526-0065	6	Washer, Flat (Copper) Gearcase Mounting (21/64" ID x 9/16" OD x 1/16" Thk)
13	516-0141	2	Pin, Gearcase Alignment
14	STUD, SPEED ADJUSTMENT		
	150-0796	1	Spec J
	150-0096	1	Begin Spec K
15	SPRING, GOVERNOR		
	150-0098	1	Spec J
	150-1612	1	Begin Spec K
16	150-1577	1	Bracket, Governor Mounting
17	ROD, GOVERNOR ARM TO CARBURETOR		
	150-1478	1	Spec J
	150-0629	1	Begin Spec K
18	150-0639	1	Ball, Joint
19	149-0003	1	Gasket, Governor Bracket Mounting
20	518-0004	1	Clip, Retaining - Rod End
21	800-0004	2	Screw, Cap - Hex Head Governor Bracket Mounting (1/4-20 x 5/8" long)
22	526-0063	2	Washer, Flat (Copper) Governor Bracket Mounting (17/64" ID x 7/16" OD 1/32" Thk)
23	870-0131	1	Nut, Self Locking (1/4-20)
24	800-0034	1	Screw, Cap - Hex Head Gearcase Mtg. (5/16-18 x 2-1/4" long)
25	870-0053	1	Nut, Hex (#10-32)
26	150-0678	1	*Clip, Sensitivity

\* - Parts Included in 103-0667 Gearcase Assembly.

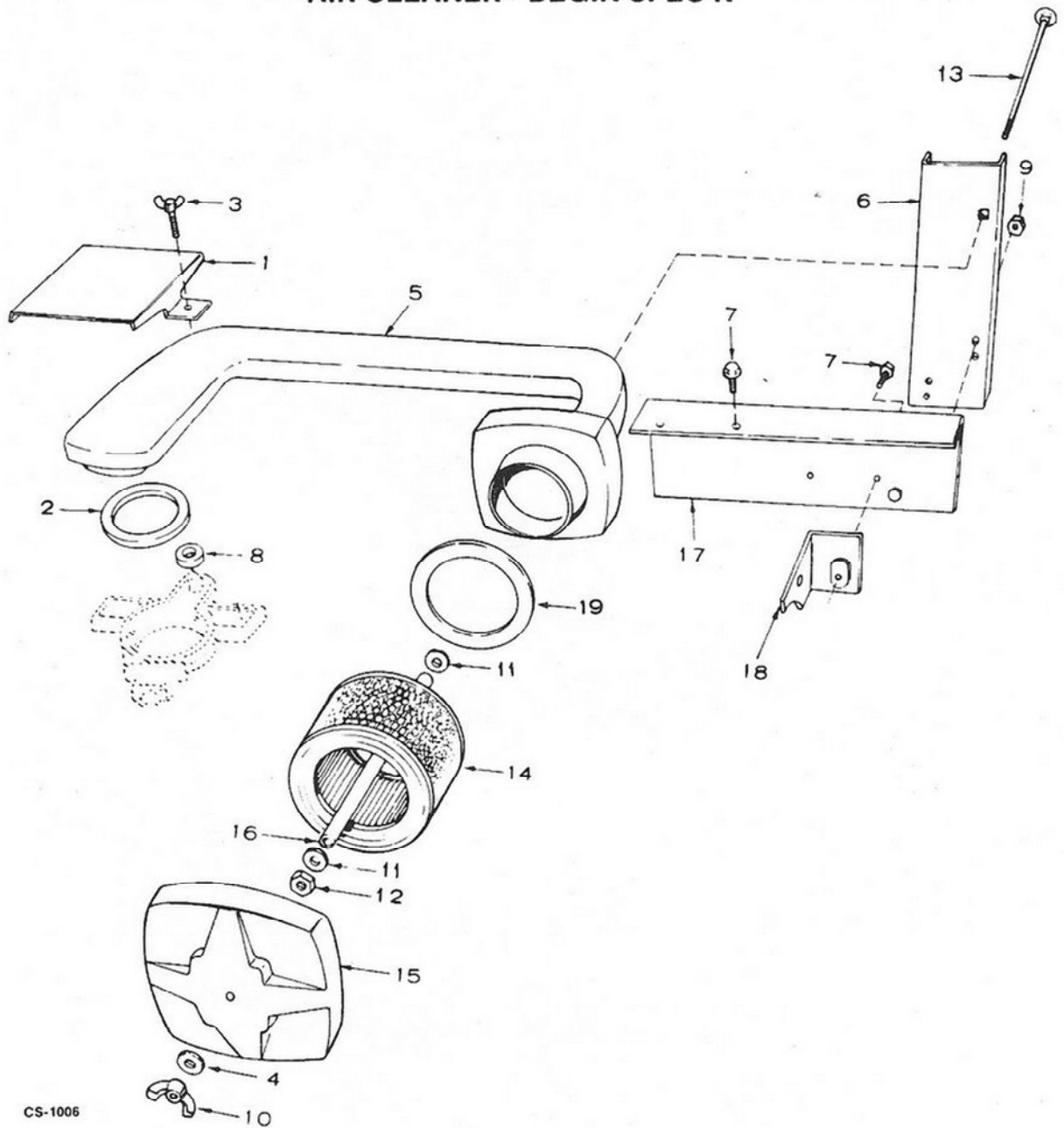
# AIR CLEANER - SPEC J ONLY



M 1188

REF NO.	PART NO.	QTY. USED	PART DESCRIPTION
1	518-0056	1	Screw, Wing (#10-32 x 1/2" lg)
2	140-1153	1	Cover, Air Cleaner
3	140-0495	1	Cartridge, Air Cleaner
4	503-0004	1	Clamp, Hose - Air Cleaner
5	503-0311	1	Clamp, Hose - Air Cleaner
6	503-0802	1	Hose, Air Cleaner
7	503-0274	1	Clamp, Hose - Sleeve to Adapter Mounting
8	140-1240	1	Sleeve, Air Cleaner Hose
9	145-0504	1	Adapter, Carburetor Air Inlet
10	503-0107	1	Clamp, Air Intake Adapter Mounting
11	140-1173	1	Bracket, Air Cleaner
12	821-0009	1	Screw, Self Locking - Hex Head (1/4-20 x 3/8" lg)
13	332-0142	1	Terminal, Lug - Ground
14	821-0010	1	Screw, Self Locking - Hex Head (1/4-20 x 1/2" lg)
15	856-0006	1	Washer, Lock - External/Internal (1/4")
16	851-0011	1	Washer, Lock - Internal (1/2")
17	123-0733	1	Adapter, Tube - Breather Hose

# AIR CLEANER - BEGIN SPEC K



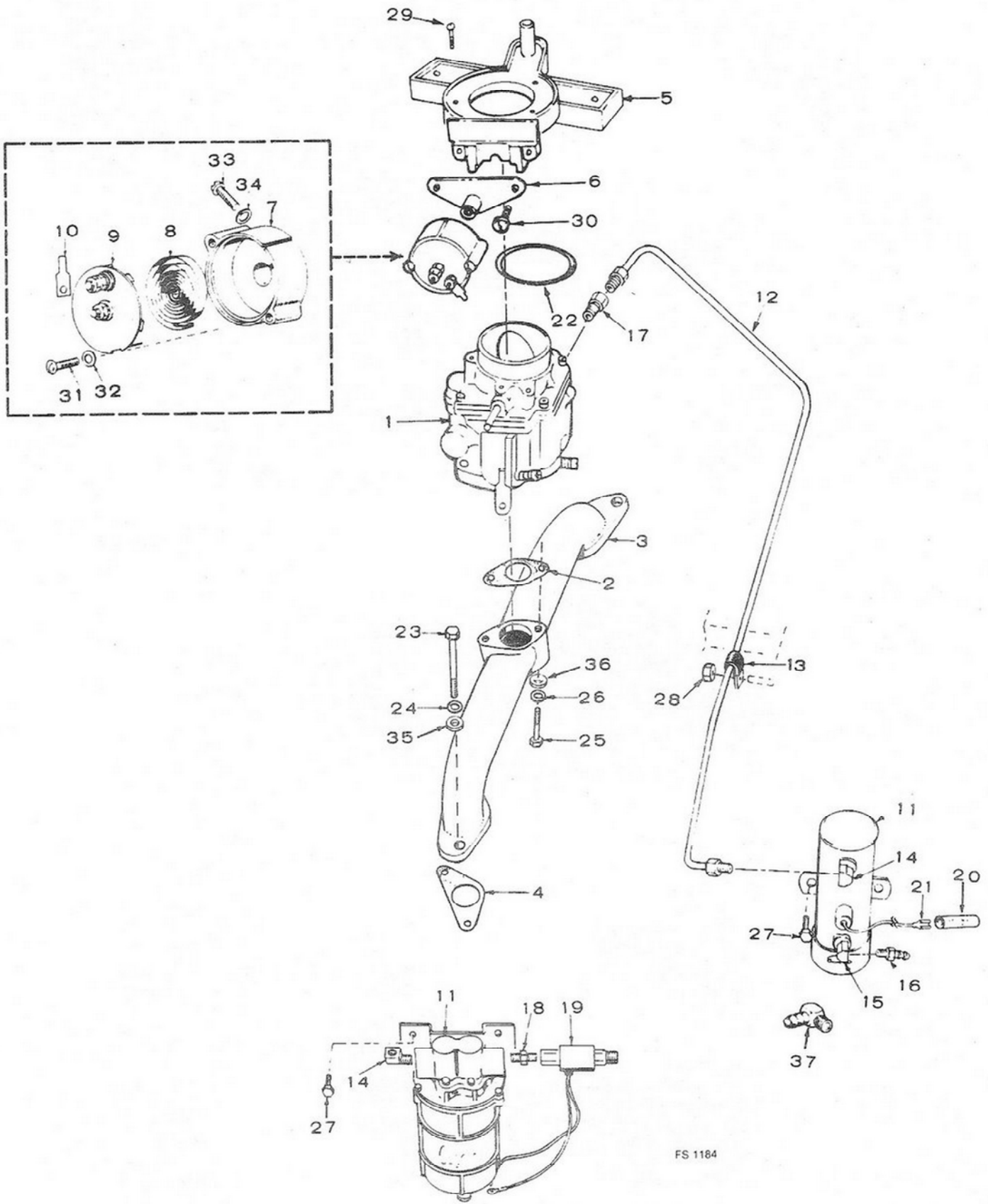
CS-1006

REF NO.	PART NO.	QTY. USED	PART DESCRIPTION	REF NO.	PART NO.	QTY. USED	PART DESCRIPTION
1	140-1520	1	Clamp, Air Duct	10	865-0019	1	Nut, Wing (1/4-20)
2	140-1502	1	Seal, Air Duct to Adapter	11	526-0158	2	Washer, Flat (17/64" ID x 5/8" OD x 1/16" Thk)
3	518-0390	2	Screw, Wing (1/4-20 x 3/4")	12	870-0212	1	Nut, Hex - Locking (1/4-20)
4	526-0021	1	Washer, Flat (17/64" ID x 3/4 OD x 1/16" Thk)	13	816-0070	1	Bolt, Carriage (1/4-20 x 6-1/2")
5	140-1503	1	Duct, Air Cleaner	14	140-0495	1	Element, Air Cleaner
6	140-1531	1	Bracket, Air Duct Support	15	140-1504	1	Cover, Air Cleaner
7	821-0009	6	Screw, Cap - Hex Head Locking (1/4-20 x 3/8")	16	140-1522	1	Spacer, Air Intake
8	140-1521	1	Seal, Air Duct to Breather Port	17	140-1529	1	Bracket, Air Intake Duct
9	870-0212	2	Nut, Hex - Locking 1/4-20	18	140-1528	1	Brace, Air Intake Duct
				19	140-1533	2	Seal, Air Cleaner Element

**B1**

940-0222 (APRIL 1981)

# FUEL SYSTEM



FS 1184

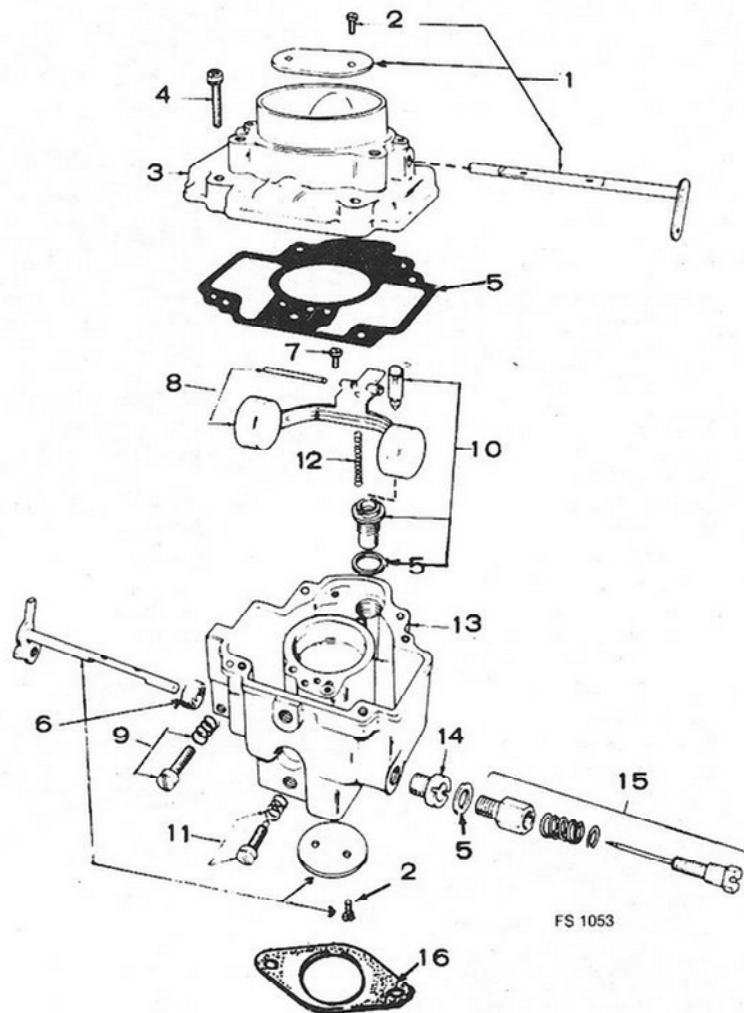


# FUEL SYSTEM

REF NO.	PART NO.	QTY. USED	PART DESCRIPTION	REF NO.	PART NO.	QTY. USED	PART DESCRIPTION
1	CARBURETOR (See Separate Group for Components)			22	509-0145	1	Seal, O-Ring - Begin Spec K
	146-0307	1	Spec J				
	146-0308	1	Begin Spec K	23	SCREW, CAP - HEX HEAD		
2	154-0733	1	Gasket, Carburetor Mounting		800-0538	4	3/8-16 x 1-1/2" - Spec J
3	MANIFOLD, INTAKE				800-0058	4	3/8-16 x 3" - Begin Spec K
	154-1861	1	Spec J				
	154-1539	1	Begin Spec K	24	800-0050	4	Washer, Lock - Spring (3/8")
4	154-1483	2	Gasket, Intake Manifold Mounting	25	SCREW, CAP - HEX HEAD		
5	140-1492	1	Adapter, Air Duct - Begin Spec K		800-0036	2	5/16-18 x 2-3/4" - Spec J
6	ADAPTER, CHOKE				800-0035	2	5/16-18 x 2-1/2" - Begin Spec K
	153-0489	1	Spec J				
	153-0499	1	Begin Spec K	26	850-0045	2	Washer, Lock - Spring (5/16")
7	153-0058	1	Housing, Choke				
8	153-0017	1	Element, Choke	27	SCREW, CAP - HWH		
9	153-0114	1	Cover, Choke		821-0009	2	1/4-20 x 3/8" - Spec J
10	332-0527	1	Terminal, Lug		821-0008	2	1/4-20 x 5/16" - Begin Spec K
11	PUMP, FUEL - ELECTRICAL (See Separate Group for Components)			28	862-0015	1	Nut, Hex (5/16-18)
	149-1553	1	Kit, Replacement - Spec J (Includes Parts Marked *)	29	804-0017	3	Screw, Cap - Socket Head (#10-32 x 1/2")
	149-1541	1	*Begin Spec K	30	815-0359	2	Screw, Tapping - Hex with ET (#10-32 x 7/8")
12	LINE, FUEL PUMP TO CARBURETOR			31	815-0285	2	Screw, Machine - Round Head with ET (#8-32 x 5/16")
	149-1417	1	Spec J				
	149-1531	1	Begin Spec K	32	526-0062	2	Washer, Flat - Brass (.02" ID x 1/2" OD x 1/16")
13	518-0350	1	Clamp, Loop - Fuel Line Insulated	33	815-0110	1	Screw, Machine - Fillister Head (#10-32 x 7/8")
14	502-0002	1	*Elbow, Inverted Male	34	850-0030	1	Washer, Lock - Spring (#10)
15	502-0196	1	*Elbow, Street 90° - Spec K	35	526-0030	4	Washer, Flat (13/32" ID x 7/8" OD x 1/8")
16	502-0395	1	Connector, Hose - Spec K	36	526-0022	1	Washer, Flat (21/64" ID x 9/16" OD x 1/16")
17	502-0003	1	Connector, Inverted Male	37	502-0313	1	*Elbow, Adapter (90°) - Begin Spec M
18	502-0082	1	Nipple, Pipe - Spec J Only				
19	307-1257	1	Valve, Solenoid - Spec J Only				
20	332-1506	1	*Connector, Fuel Pump Lead - Begin Spec K				
21	332-0529	1	Terminal, Fuel Pump Lead - Begin Spec K				

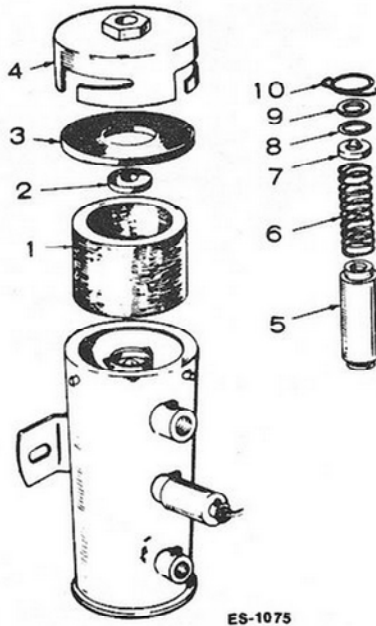
\* - Parts Included in the 149-1553 Fuel Pump Replacement Kit.

# CARBURETOR PARTS (ADJUSTABLE MAIN JET)



REF NO.	PART NO.	QTY. USED	PART DESCRIPTION	REF NO.	PART NO.	QTY. USED	PART DESCRIPTION
CARBURETOR, COMPLETE (Includes Mounting Gasket)							
	146-0307	1	Spec J	8	146-0262	1	Float Package
	146-0308	1	Begin Spec K	9	146-0261	1	Idle Speed Adjusting Screw Package
1	CHOKE SHAFT PACKAGE						
	146-0264	1	Spec J	10	146-0289	1	Valve and Seat Package
	146-0265	1	Begin Spec K	11	146-0209	1	Idle Needle Package
2	146-0142	4	Screw, Valve Mounting	12	146-0208	1	Spring, Buoyancy
3		1	Intake, Air (Not Sold Separately)	13		1	Body (Not Sold Separately)
4	146-0247	4	Screw, Body to Intake	14	JET, POWER		
5	146-0220	1	Kit, Gasket		146-0238	1	Spec J
6	THROTTLE SHAFT PACKAGE						
	146-0268	1	Spec J		146-0243	1	Begin Spec M
	146-0267	1	Begin Spec M	15	146-0248	1	Power Needle Package
7	146-0222	1	Screw, Lever Pin	16	154-0733	1	Gasket, Carburetor Mounting
					146-0290	1	Kit, Repair

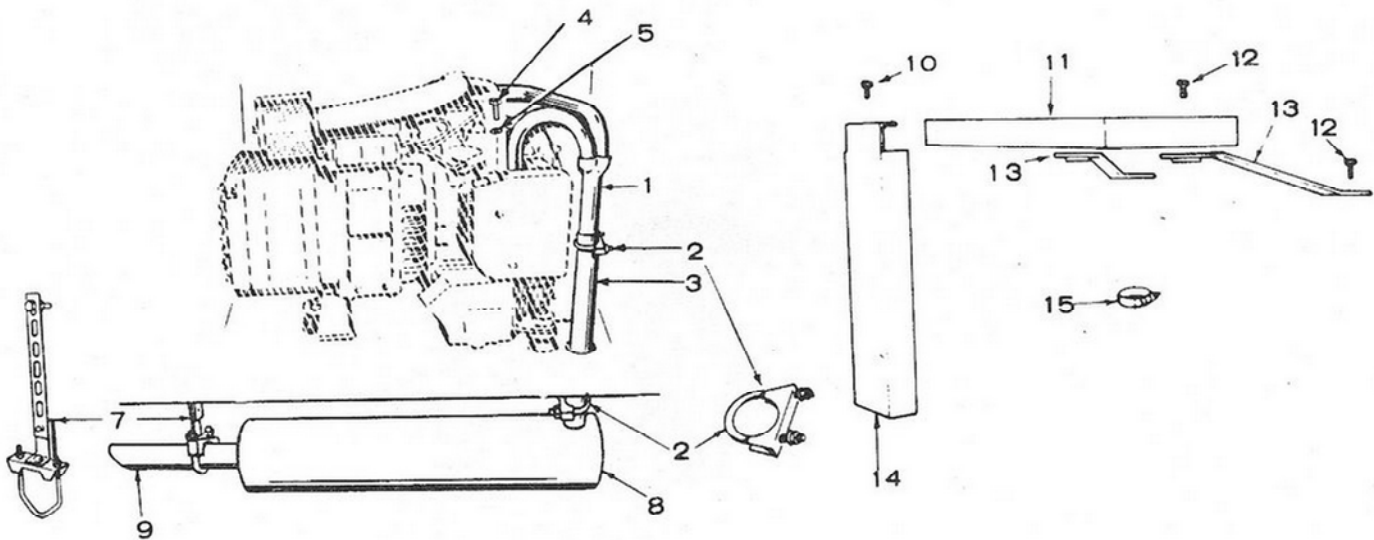
# FUEL PUMP (ELECTRIC) - BEGIN SPEC K



ES-1075

REF NO.	PART NO.	QTY. USED	PART DESCRIPTION
	149-1541	1	Pump, Fuel
1	149-1445	1	Filter
2	149-1447	1	Magnet
3	149-1446	1	Gasket, Cover
4	149-1453	1	Cover
5	149-1452	1	Plunger
6	149-0767	1	Spring, Plunger Return
7	149-1451	1	Spring Cup & Valve
8	149-1450	1	Gasket, Spring Cup
9	149-1449	1	Washer, Cup Gasket
10	149-1448	1	Retainer, Cup & Plunger

# EXHAUST SYSTEM - SPEC J

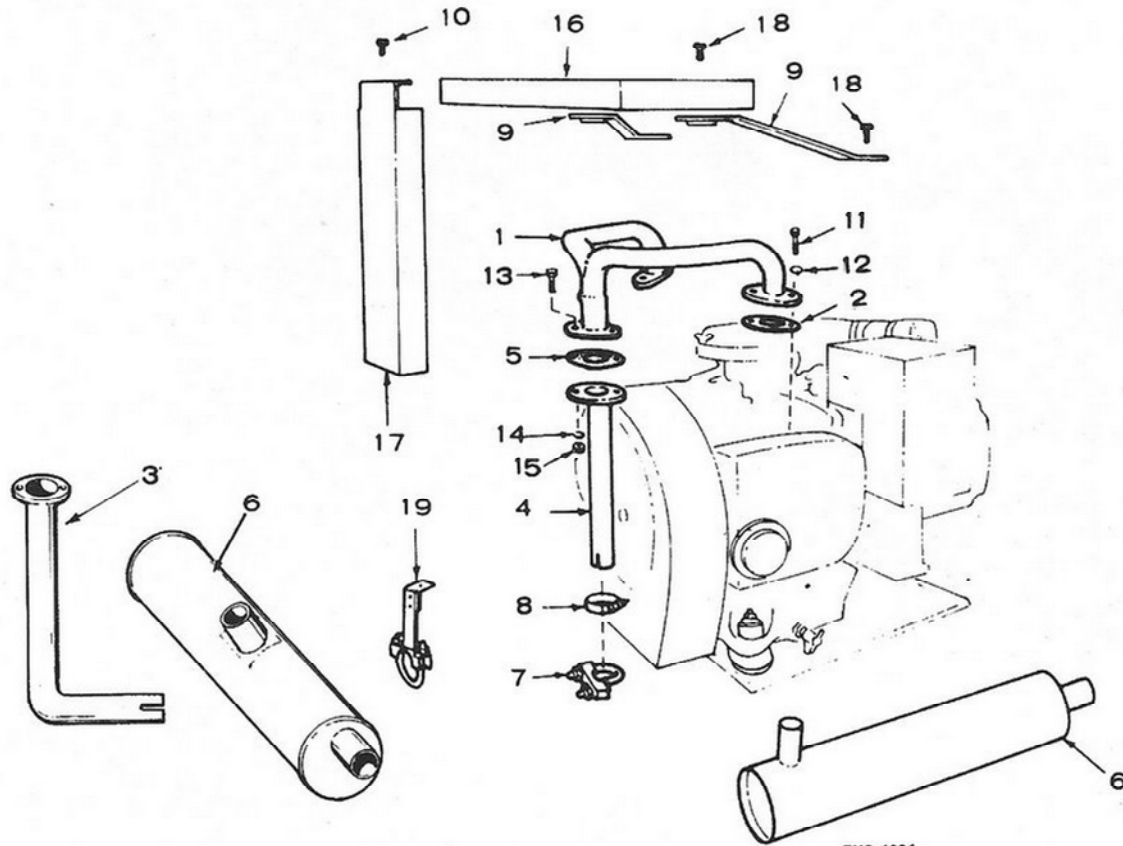


REF. NO.	PART NO.	QTY. USED	PART DESCRIPTION
1	154-1864	1	Manifold, Exhaust
2	155-1239	2	Clamp, Muffler - Optional
3	154-1578	1	Tube, Exhaust - Optional
4	800-0512	4	Screw, Cap - Hex Head (5/16-18 x 1")
5	850-0045	4	Washer, Lock-Spring (5/16")
6	154-1482	2	Gasket, Exhaust Manifold
7	155-1234	1	Bracket, Muffler Hanger - Optional
8	155-1222	1	Muffler, Exhaust - Optional
9	155-1235	1	Tube, Muffler Exhaust - Optional

REF. NO.	PART NO.	QTY. USED	PART DESCRIPTION
10	800-0034	2	*Screw Cap - Hex Head (5/16-18 x 3/4") - Optional
11	154-1888	1	*Shield, Heat - Exhaust - Optional
12	821-0010	3	*Screw, Cap - Hex Head (1/4-20 x 1/2") - Optional
13	154-1887	2	*Bracket, Heat Shield Mounting - Optional
14	154-1915	1	*Shield, Heat - Optional
15	503-0107	1	*Clamp, Shield to Exhaust Tube - Optional

\* - Parts are for UL Listed and CSA Certified Sets.

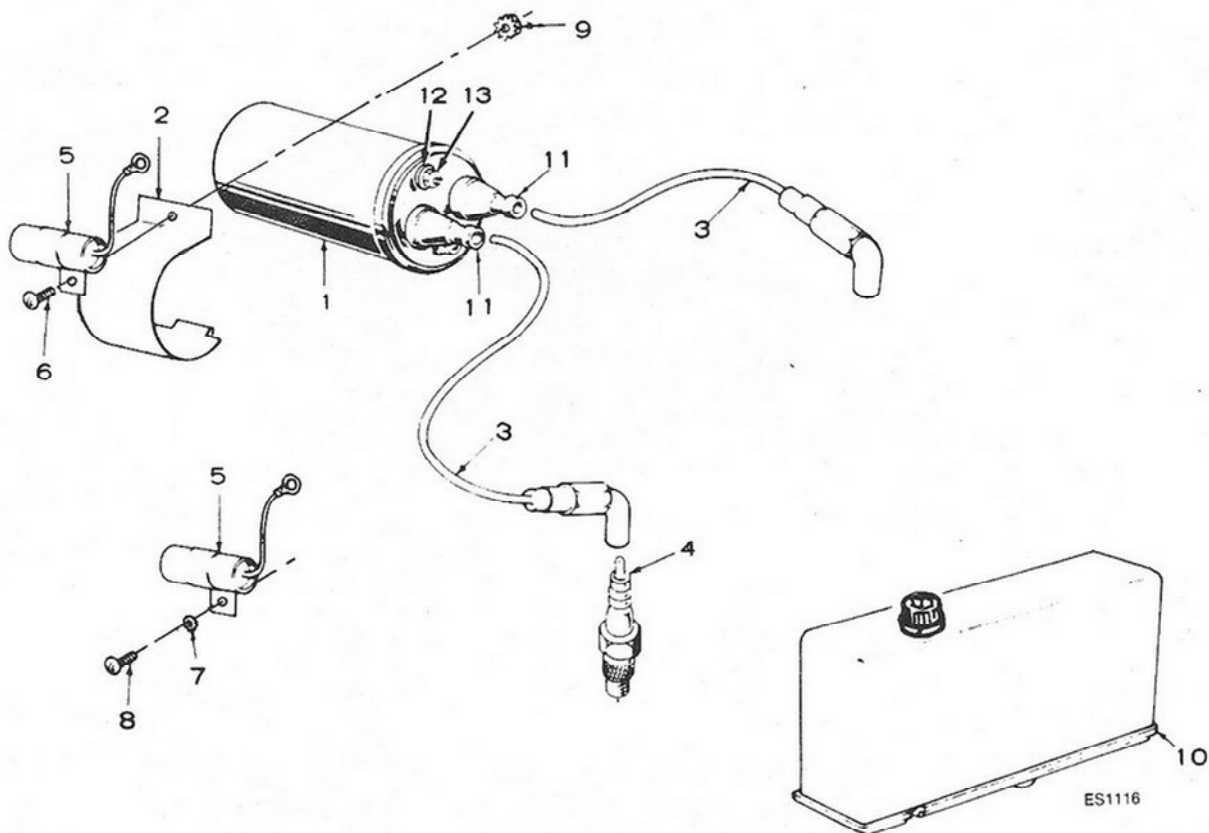
**EXHAUST SYSTEM - BEGIN SPEC K  
(UL LISTED AND CSA CERTIFIED)**



REF. NO.	PART NO.	QTY. USED	PART DESCRIPTION
1	154-1967	1	Manifold, Exhaust
2	154-1482	2	Gasket, Exhaust Manifold Mounting
3	154-2226	1	Tube, Exhaust (90° Bend) - Begin Spec M - Optional
4	TUBE, EXHAUST - OPTIONAL		
	154-1917	1	Spec K
	154-2167	1	Begin Spec M
5	154-2061	1	Gasket, Exhaust Tube - Optional
6	MUFFLER, EXHAUST - OPTIONAL		
	155-1258	1	End Inlet
	155-1910	1	Center Inlet
7	155-1239	1	Clamp, Muffler - Optional
8	503-0107	1	Clamp, Shield to Exhaust Tube - Optional
9	BRACKET, HEAT SHIELD MOUNTING - OPTIONAL		
	154-1968	1	Right Side
	154-1069	1	Left Side

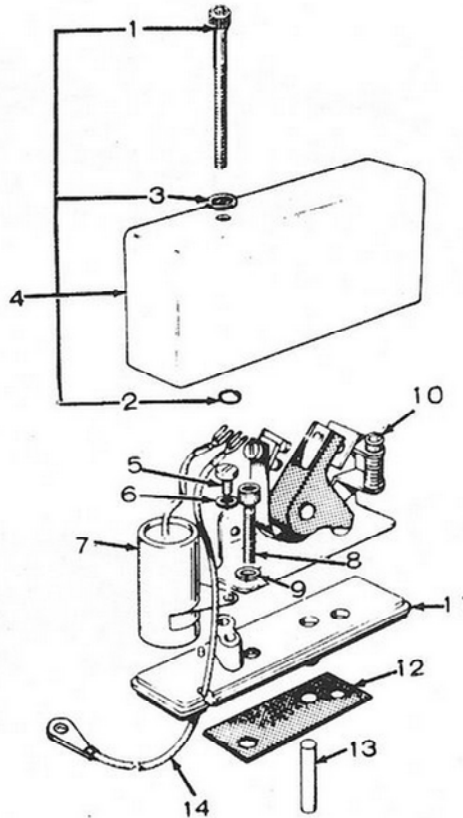
REF. NO.	PART NO.	QTY. USED	PART DESCRIPTION
10	800-0034	2	Screw, Cap - Hex Head (5/16-18 x 3/4") - Optional
11	800-0512	4	Screw, Cap - Hex Head (5/16-18 x 1")
12	850-0045	4	Washer, Lock-Spring (5/16")
13	800-0030	2	Screw, Cap - Hex Head (5/16-18 x 1-1/4") - Optional
14	850-0045	2	Washer, Lock-Spring (5/16") - Optional
15	862-0015	2	Nut, Hex (5/16-18) - Optional
16	154-1972	1	Shield, Heat (Manifold) - Optional
17	SHIELD, HEAT (EXHAUST TUBE) - OPTIONAL		
	154-1980	1	Spec K
	154-2146	1	Begin Spec M
18	821-0010	3	Screw, Cap - Hex Head (1/4-20 x 1/2") - Optional
19	155-1234	1	Bracket, Muffler Hanger - Optional

# IGNITION SYSTEM



REF. NO.	PART NO.	QTY. USED	PART DESCRIPTION	REF. NO.	PART NO.	QTY. USED	PART DESCRIPTION
1	166-0643	1	Coil, Ignition	7	856-0003	1	Washer, Lock - External/Internal Condenser Mounting (#10) Spec J
2	166-0588	1	Clamp, Ignition Coil Mounting	8	815-0350	1	Screw, Tapping - Hex Washer Head - Condenser Mtg. (#10-32 x 3/8" lg) - Spec J
3	LEAD, SPARK PLUG ELECTRICAL			9	870-0131	1	Nut, Hex - Coil Bracket Mtg. and Condenser (#10-32)
	167-1595	1	14-1/2" lg - Spec J	10	160-1210	1	Box Assembly, Breaker - Complete (See Separate Group for Components)
	167-1596	1	7-1/2" lg - Spec J	11	160-0558	2	Nipple, Spark Plug Cable
	167-1596	2	7-1/2"- Begin Spec K	12	850-2005	1	Washer, Flat (Special)
4	PLUG, SPARK			13	166-0554	1	Nut, Head (Special)
	167-0247	2	Spec J				
	167-0292	2	Spec K through Spec N				
	167-0291	2	Begin Spec P				
5	312-0017	1	Condenser, Ignition (.5 MFD)				
6	821-0004	1	Screw, Cap - HWH (#10-32 x 5/16")				

# BREAKER BOX ASSEMBLY

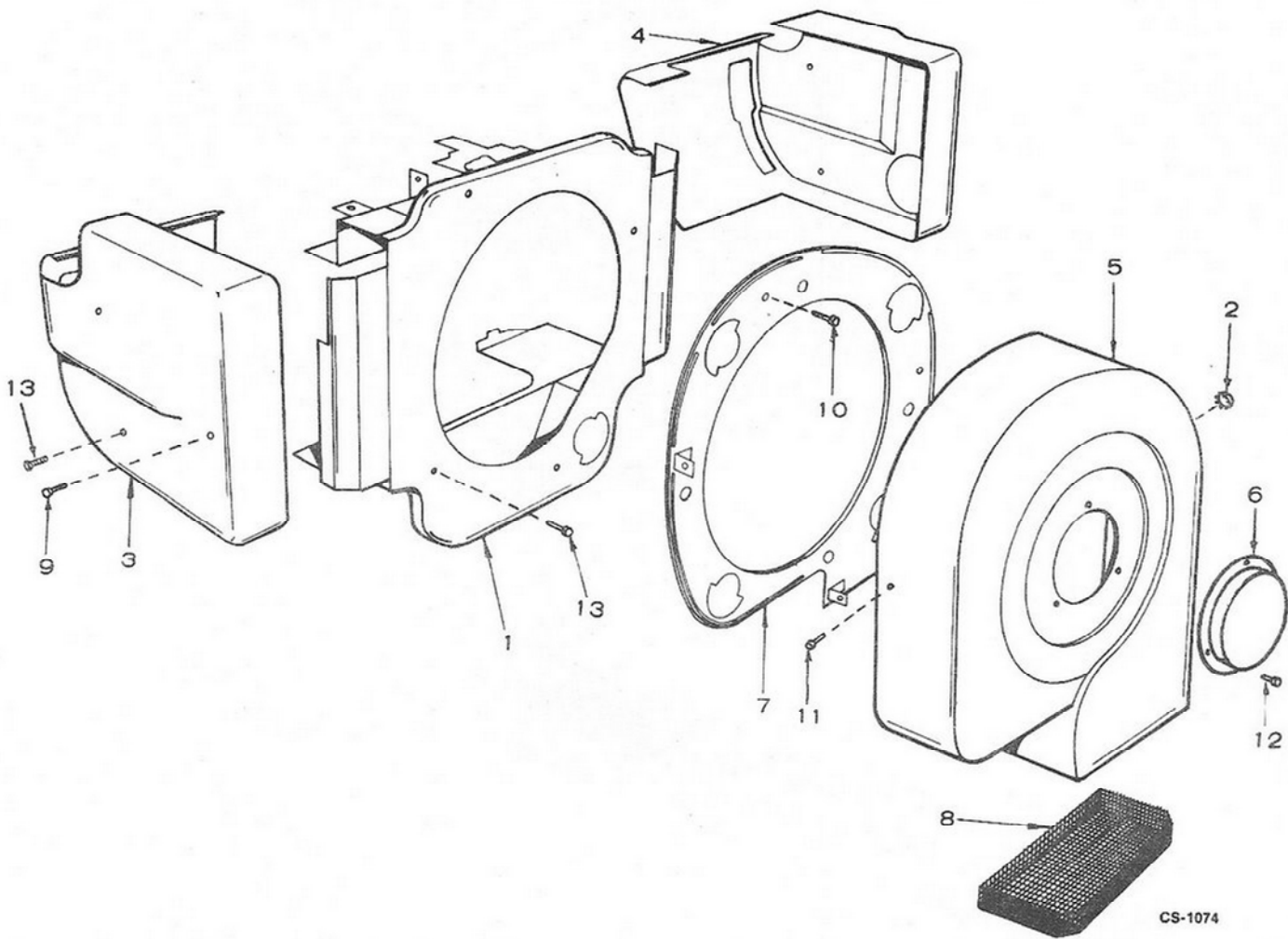


ES-1057

REF. NO.	PART NO.	QTY. USED	PART DESCRIPTION	REF. NO.	PART NO.	QTY. USED	PART DESCRIPTION
	160-1210	1	Box, Breaker (Includes Parts Marked *)	8	802-0034	2	*Screw, Cap (1/4-20 x 3/4") - Socket Head
1	802-0022	1	*Screw, Cap - Hex Socket (#10-24 x 1-1/2")	9	850-0040	2	*Washer, Lock (1/4")
2	509-0065	1	*Retainer ("O" Ring)	10	160-1183	1	*Point Set, Breaker
3	526-0008	1	*Washer, Flat (13/64" ID x 7/16" OD x 1/32" Thk)	11	160-1219	1	*Base, Breaker
4	160-1285	1	*Cover, Breaker Box	12	160-1150	1	*Gasket, Breaker Box
5	815-0358	1	*Screw, Cap (#8-32 x 5/16") - Slotted	13	160-1151	1	Plunger, Breaker Points
6	850-0025	1	*Washer, Lock (#8)	14	336-2378	1	Lead, Breaker Box to Coil
7	312-0196	1	*Condenser		160-1213		Tune Up Kit (Includes Points and Condenser)

\* - Parts Included in 160-1210 Breaker Box.

# AIR HOUSING



REF. NO.	PART NO.	QTY. USED	PART DESCRIPTION	REF. NO.	PART NO.	QTY. USED	PART DESCRIPTION
1	HOUSING, BLOWER 134-3312 134-4095	1 1	Spec J through N Begin Spec P	9	821-0010	2	Screw, Self-Locking - Hex Head - Cylinder Air Housing Mounting (1/4-20 x 1/2" lg)
2	517-0021	1	Plug, Button	10	821-0010	4	Screw, Self-Locking - Hex Head - Scroll Backplate Mounting (1/4-20 x 1/2" lg)
3	HOUSING, CYLINDER AIR (LEFT SIDE) 134-2755 134-3617	1 1	Spec J through N Begin Spec P	11	821-0010	5	Screw, Cap - HWH (1/4-20 x 3/8")
4	HOUSING, CYLINDER AIR (RIGHT SIDE) 134-2752 134-3618	1 1	Spec J through N Begin Spec P	12	821-0009	3	Screw, Self-Locking - Hex Head - Scroll Cover Mounting (1/4-20 x 3/8" lg)
5	134-2761	1	Scroll, Air (Includes Guard)	13	815-0261	6	Screw, Tapping - Hex Head - Cylinder Air Housing Mounting (1/4-20 x 7/16" lg)
6	134-3119	1	Cover, Scroll				
7	134-2747	1	Backplate, Scroll				
8	134-2763	1	Guard, Scroll				