

**Onan**

**Genset**

**Parts Catalog**

**HDKAJ  
HDKAK  
HDKAT**



Printed in U.S.A.

981-0200D  
11/01 (HDKAJ/K Spec A-H)  
(HDKAT Spec A-E)

Replaces 981-0200C, 8/01 (Spec A-F)

## MODEL IDENTIFICATION

To avoid errors or delay in filling your parts order, always give the MODEL, SPEC NO. and SERIAL NO. from the Onan nameplate.

For handy reference, insert your nameplate information in the spaces below.

\_\_\_\_\_  
MODEL AND SPEC NO.

\_\_\_\_\_  
SERIAL NO.

\_\_\_\_\_  
DIGITAL CONTROL SOFTWARE VERSION  
AND DATE (IF APPLICABLE)

## SAFETY PRECAUTIONS

The following symbols are used in Onan manuals to alert users to the potentially dangerous conditions relating to maintenance of equipment and replacement of parts. Please read and observe.



*This symbol warns of immediate hazards which will result in severe personal injury or death.*



*This symbol refers to a hazard or unsafe practice which can result in severe personal injury or death.*



*This symbol refers to a hazard or unsafe practice which can result in severe personal injury or product or property damage.*

## PRODUCT SAFETY PRECAUTIONS



***Service and repair of Onan equipment must be performed by trained, experienced personnel only. Improper service or repair may result in property damage, severe personal injury or death. Do not use this catalog as a guide to servicing your equipment. Read and follow the IMPORTANT SAFETY INSTRUCTIONS in the Service Manual appropriate for the equipment you are working on.***



***Contact with USED ENGINE OILS has been identified by a United States federal agency and some USA state agencies as causing CANCER or REPRODUCTIVE TOXICITY. When checking or changing engine oils take all necessary precautions not to ingest, breathe the fumes or contact the used oil.***



***Contact with ASBESTOS has been identified by a United States federal agency and some USA state agencies as causing CANCER or REPRODUCTIVE TOXICITY. When handling engine gaskets take all necessary precautions not to ingest, breathe or contact the dust from the gaskets! Use adequate ventilation and wear protective gloves, masks and clothing!***



***Contact with BENZINE and LEAD, found in gasoline, fuel additives and solvents has been identified by a United States federal agency and some USA state agencies as causing CANCER or REPRODUCTIVE TOXICITY. When checking, draining or adding gasoline and fuel additives or using solvents take all necessary precautions not to ingest, breathe the fumes or contact the liquids. Use adequate ventilation and wear protective gloves, masks and protective clothing!***

## Introduction

This parts catalog applies to the standard generator sets listed below. Parts are arranged in groups of related items and each illustrated part is defined by a reference number corresponding to the same reference number in the parts list. Parts illustrations are typical. Using the model and specification number from your generator set nameplate, select parts that apply to your set. Unless otherwise mentioned in the description or page heading, parts are interchangeable between models. Throughout this catalog right and left sides are determined by facing the engine end (front) of the set.

<b>Generator Set Data Table</b>					
<b>Model Identification</b>	<b>Rating</b>	<b>Wiring Diagram AC/DC</b>	<b>Voltage</b>	<b>Hertz</b>	<b>Phase</b>
7.5HDKAJ/*	7,500 Watts	611-1236	120	60	1
7.5HDKAT/*	7,500 Watts	611-1236	120	60	1
8.0HDKAK/*	8,000 Watts	611-1236	120	60	1

\* – The specification number denotes customer requested options or deviations from a standard (1A, 1B, etc.) model. The specification letter advances (A, to B, to C, etc.) with major manufacturing changes.

## Index

Arm, Rocker, **18**  
Armature, Starter, **41**

Baffle, Inlet, **25**  
Ball, Crankshaft, **7**  
Ball, Injection Pump Gear, **13**  
Ball, Valve Seat, **21**  
Barb, Coolant Tank Hose, **27**  
Base, Governor, **12**  
Base, Mounting, **35**  
Bearing, Carrier Ball, **12**  
Bearing, Crankshaft Thrust, **7**  
Bearing, Fuel Camshaft, **13**  
Bearing, Starter, **41**  
Bearing, Water Pump Ball, **22**  
Belt, Fan, **30**  
Block, AC Terminal, **44**  
Block, Battery Harness Terminal, **45**  
Block, Cylinder, **6**  
Block, Exhaust Fiberglass, **33**  
Bracket, Air Cleaner, **51**  
Bracket, Fuel Filter, **23**  
Bracket, Inverter, **42**  
Bracket, Rocker Arm, **18**  
Bracket, Voltage Regulator, **35**  
Breaker, Circuit, **44**  
Bushing, Connecting Rod, **7**  
Bushing, Crankshaft, **7**  
Bushing, Idle Gear, **8**

Camshaft, **8**  
Camshaft, Fuel, **13**  
Cap, Coolant Drain, **27**  
Cap, Coolant Fill, **27**  
Cap, Coolant Recovery Tank, **27**  
Cap, Cylinder Block Sealing, **6**  
Cap, Cylinder Head Sealing, **15**  
Cap, Oil Fill, **20**  
Cap, Speed Control, **11**  
Cap, Valve, **18**  
Carrier, **12**  
Case, Governor Ball, **13**  
Clamp, Hose Bracket, **27**  
Clamp, Isolator, **33**  
Clamp, Loop, **42**  
Clamp, Loop (1.44"), **29**  
Clamp, Loop (1"), **28**  
Clamp, Loop (3/4"), **25**  
Clip, Loop, **42**  
Clutch, Starter, **41**  
Cock, Oil Drain, **6**  
Collar, Crankshaft, **7**  
Collet, Valve Spring, **18**  
Components, Injection Nozzle, **17**  
Components, Injection Pump, **14**  
Components, Starter, **41**  
Components, Water Pump, **22**  
Control, Speed, **11**

Cord, Glow Plug, **16**  
Core, AC Harness Ferrite, **44**  
Core, Battery Harness Ferrite, **45**  
Core, Engine Harness Ferrite, **43**  
Cover, AC Access, **37**  
Cover, AC Access (HDKAT), **39**  
Cover, Air Cleaner, **25, 51**  
Cover, Air Cleaner Element, **25**  
Cover, Bearing Plate, **9**  
Cover, Breather Element, **20**  
Cover, Fuel Camshaft, **6**  
Cover, Gearcase Hole, **21**  
Cover, Governor, **12**  
Cover, Hole, **13**  
Cover, Lifting Eye Access, **37**  
Cover, Lifting Eye Access (HDKAT), **39**  
Cover, Main Bearing, **9**  
Cover, Radiator Fill Access, **37**  
Cover, Radiator Fill Access (HDKAT), **39**  
Cover, Valve, **20**  
Cover, Water Temperature Thermostat, **19**  
Crankshaft, **7**

Door, Access (HDKAT), **39**  
Door, Maintenance, **35**

Edging, Housing Trim (HDKAT), **39**  
Elbow, Breather, **20**  
Elbow, Bulkhead, **23**  
Elbow, Exhaust, **33**  
Element, Air Cleaner, **51**  
Element, Breather, **20**  
Element, Intake Air Cleaner, **25**  
Engine, Replacement, **6**  
Eye, Lifting, **15**

Fan, Generator, **40**  
Filter, Fuel, **23**  
Filter, Oil, **21**  
Fitting, Bulkhead, **23**  
Fitting, Coolant "T" Hose, **27**  
Flange, Component Water Pump, **22**  
Flange, Injection Pump Plunger Sleeve, **14**  
Flange, Outlet Water Pump, **19**  
Frame, Starter, **41**  
Fuse, **43**

Gasket, Bearing Plate Cover, **9**  
Gasket, Cylinder Head, **15**  
Gasket, Delivery Valve, **14**  
Gasket, Exhaust Manifold, **33**  
Gasket, Gearcase, **21**  
Gasket, Gearcase Hole Cover, **21**  
Gasket, Governor Base, **12**  
Gasket, Hole Cover, **13**  
Gasket, Injection Pump, **14**  
Gasket, Injector Nozzle, **16**  
Gasket, Inlet Manifold, **31**

## Index

Gasket, Muffler, **33**  
Gasket, Oil Filter Flange, **21**  
Gasket, Oil Pan, **29**  
Gasket, Oil Pump, **6**  
Gasket, Speed Control, **11**  
Gasket, Valve Cover, **20**  
Gasket, Water Flange, **19**  
Gasket, Water Pump, **22**  
Gasket, Water Temperature Thermostat, **19**  
Gauge, Oil Pressure (Remote Panel), **50**  
Gauge, Water Temperature (Remote Panel), **50**  
Gear, Camshaft, **8**  
Gear, Crankshaft, **7**  
Gear, Idle, **8**  
Gear, Injection Pump, **13**  
Gear, Oil Pump Drive, **6**  
Gearcase, **21**  
Generator, **40**  
Governor, **12**  
Grommet, Engine Harness, **43**  
Grommet, Remote Air Cleaner Kit, **51**  
Guard, Circuit Breaker, **37**  
Guard, Circuit Breaker (HDKAT), **39**  
Guard, Fan, **35**  
Guide, Valve, **15**

Harness, AC, **44**  
Harness, Battery, **45**  
Harness, Engine, **43**  
Harness, Extension, **46**  
Harness, Fuel Pump, **51**  
Harness, Pigtail, **46**  
Harness, Remote Panel (Gauges), **50**  
Harness, Remote Panel (On/Off Switch), **47**  
Harness, Remote Panel (Switch/Hourmeter), **48**  
Harness, Remote Panel (Switch/Voltmeter), **49**  
Head, Cylinder, **15**  
Hinge, Maintenance Door, **35**  
Holder Assy, Nozzle, **17**  
Holder, Delivery Valve, **14**  
Holder, Fuse, **43**  
Holder, Main Bearing, **9**  
Holder, Nozzle, **16**  
Hose, Air Bleed, **27**  
Hose, Air Cleaner, **51**  
Hose, Breather, **20**  
Hose, Coolant Fill Neck, **27**  
Hose, Intake, **25**  
Hose, Oil Fill, **29**  
Hose, Overflow, **27**  
Hose, Radiator, **27**  
Hourmeter, **37**  
Hourmeter (Remote Gauge Panel), **50**  
Hourmeter (Remote Switch Panel), **48**  
Hourmeter, Housing (HDKAT), **39**  
Housing (HDKAJ and HDKAK), **37**  
Housing (HDKAT), **39**  
Housing, Air Cleaner, **25**  
Housing, Flywheel, **40**  
Housing, Starter, **41**  
Impeller, Water Pump, **22**

Indicator, Oil Level, **29**  
Insulation, Access Cover, **37**  
Insulation, Access Cover (HDKAT), **39**  
Insulation, Cap, **37**  
Insulation, Cap (HDKAT), **39**  
Insulation, Door Panel (HDKAT), **39**  
Insulation, Engine Panel, **37**  
Insulation, Engine Panel (HDKAT), **39**  
Insulation, Exhaust Baffle, **28**  
Insulation, Housing, **37**  
Insulation, Housing (HDKAT), **39**  
Insulation, Inlet Baffle, **25**  
Insulation, Panel Rail, **37**  
Insulation, Panel Rail (HDKAT), **39**  
Insulation, Top Panel, **37**  
Insulation, Top Panel (HDKAT), **39**  
Insulator, Terminal, **43**  
Intake, Air, **25**  
Inverter, **42**  
Isolator, Muffler, **33**  
Isolator, Vibration, **35**

Joint, Injection Pump Eye, **14**

Key, Camshaft Feather, **8**  
Key, Crankshaft Feather, **7**  
Key, Cylinder Block Feather, **6**  
Key, Fuel Camshaft Feather, **13**  
Kit, Aux Commercial Fuel Pump, **51**  
Kit, Commercial Remote Air Cleaner, **51**  
Kit, Housing Insulation, **37**  
Kit, Remote Panel (Gauges), **50**  
Kit, Remote Panel (On/Off Switch), **47**  
Kit, Remote Panel (Switch/Hourmeter), **48**  
Kit, Remote Panel (Switch/Voltmeter), **49**  
Kit, Starter Brush, **41**

Labels, **51**  
Latch, Service Door (HDKAT), **39**  
Latch, Service Panel, **35**  
Lever, Fork, **10**  
Line, Fuel, **23**

Manifold, Exhaust, **33**  
Manifold, Inlet, **31**  
Meter, Voltage (Remote Panel), **49**  
Mount, Inverter, **42**  
Mount, Radiator, **28**  
Muffler, Exhaust, **33**

Neck, Coolant Fill, **27**  
Nipple, Gearcase Hex Pipe, **21**  
Nozzle, Injection, **16**  
Nozzle, Injection Component, **17**  
O'Ring, Coolant Tank Cap, **27**

## Index

O'Ring, Cylinder Block, **6**  
O'Ring, Cylinder Head, **15**  
O'Ring, Gearcase, **21**  
O'Ring, Governor Rotor, **12**  
O'Ring, Injection Pump, **14**  
O'Ring, Oil Level Indicator, **29**  
O'Ring, Oil Pickup Tube, **29**  
O'Ring, Oil Slinger, **7**  
O'Ring, Valve Cover Cap Nut, **20**  
Outlet, Water, **19**

Pan, Oil, **29**  
Panel, Cap, **37**  
Panel, Cap (HDKAT), **39**  
Panel, Curb (HDKAT), **39**  
Panel, Curb (W/O Access Door), **37**  
Panel, Engine, **37**  
Panel, Engine (HDKAT), **39**  
Panel, Rail, **37**  
Panel, Rail (HDKAT), **39**  
Panel, Remote Gauge, **50**  
Panel, Remote Switch, **47**  
Panel, Remote Switch/Hourmeter, **48**  
Panel, Remote Switch/Voltmeter, **49**  
Panel, Top, **37**  
Panel, Top (HDKAT), **39**  
PCB Assy, Filter DC, **45**  
Pin, Cylinder Block Hollow, **6**  
Pin, Cylinder Block Straight, **6**  
Pin, Gearcase Spring, **21**  
Pin, Governor Spring, **10**  
Pin, Injection Pump, **14**  
Pin, Injection Pump Joint, **14**  
Pin, Piston, **7**  
Pipe, Exhaust Flex, **33**  
Pipe, Injection, **16**  
Pipe, Overflow, **16**  
Pipe, Water Pump Return, **22**  
Pipe, Water Return, **19**  
Piston, **7**  
Plate, Breather Element, **20**  
Plate, Camshaft Retaining, **8**  
Plate, Fuel Camshaft Retaining, **13**  
Plate, Injection Pump, **14**  
Plug, Cylinder Block, **6**  
Plug, Cylinder Head Pipe, **15**  
Plug, Gearcase Pipe, **21**  
Plug, Glow, **16**  
Plug, Oil Drain, **29**  
Plunger, Injection Pump, **14**  
Pulley, Drive, **30**  
Pulley, Fan, **30**  
Pump, Aux Fuel, **51**  
Pump, Fuel, **23**  
Pump, Injection, **13**  
Pump, Injection Component, **14**  
Pump, Oil, **6**  
Pump, Water, **22**

Rack, Injection Pump Control, **14**  
Radiator, **28**  
Regulator, **35**  
Resonator, Intake, **25**  
Retainer, Valve Spring, **18**  
Ring, Idle Gear Retaining, **8**  
Ring, Piston Pin Retaining, **7**  
Rod, Camshaft Push, **8**  
Rod, Connecting, **7**  
Rod, Injection Nozzle Push, **17**  
Rotor, Generator, **40**  
Rotor, Governor, **12**

Seal, Air Cleaner Spacer, **25**  
Seal, Bearing Plate Cover Oil, **9**  
Seal, Coolant Hose, **27**  
Seal, Exhaust Pipe, **33**  
Seal, Fuel Pump, **23**  
Seal, Gearcase Oil, **21**  
Seal, Housing, **25**  
Seal, Injection Nozzle Heat, **16**  
Seal, Maintenance Door, **35**  
Seal, Oil Drain, **29**  
Seal, Oil Fill Cap, **20**  
Seal, Radiator Spacer, **28**  
Seal, Valve Stem, **18**  
Seal, Water Pump, **22**  
Seat, Injection Pump Spring, **14**  
Seat, Valve, **21**  
Sender, Water Temperature, **19**  
Set, Crankshaft Bearing, **7**  
Set, Piston Ring, **7**  
Shaft, Governor, **10**  
Shaft, Idle Gear, **8**  
Shaft, Rocker Arm, **18**  
Shield, Breather Oil, **20**  
Shim, Injection Pump, **13**  
Shim, Pump, **14**  
Sleeve, Air Intake, **25**  
Sleeve, Crankshaft, **7**  
Sleeve, Governor, **13**  
Sleeve, Injection Pump Control, **14**  
Slinger, Oil, **7**  
Spacer, Idle Gear, **8**  
Spacer, Injection Nozzle, **17**  
Spring, Delivery Valve, **14**  
Spring, Fork Lever Governor, **10**  
Spring, Governor, **12**  
Spring, Injection Nozzle, **17**  
Spring, Injection Pump Plunger, **14**  
Spring, Rocker Arm, **18**  
Spring, Valve, **18**  
Spring, Valve Seat, **21**  
Starter Components, **41**  
Starter Mounting, **40**  
Stator, Generator, **40**  
Stator, Governor, **12**  
Strap, Bond, **35**

## Index

Switch, Oil Pressure, **6**  
Switch, Rocker, **37**  
Switch, Rocker (HDKAT), **39**  
Switch, Start/Stop (Remote Gauge Panel), **50**  
Switch, Start/Stop (Remote Hourmeter Panel), **48**  
Switch, Start/Stop (Remote Panel), **47**  
Switch, Start/Stop (Remote Voltmeter Panel), **49**  
Switch, Starter, **41**  
System, Cooling, **27**  
System, Exhaust, **33**  
System, Fuel, **23**

Tank, Coolant Recovery, **27**  
Tappet, Camshaft, **8**  
Tappet, Injection Pump, **14**

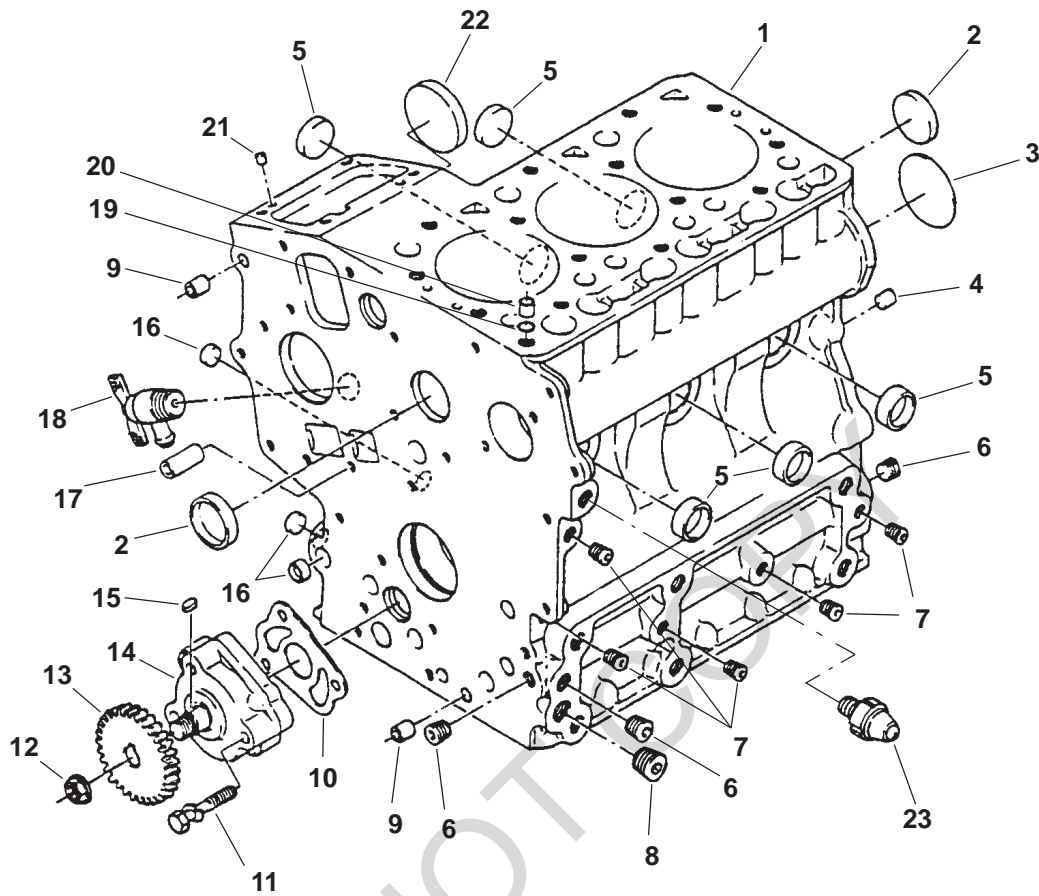
Thermostat, Water Temperature, **19**  
Transformer, **44**  
Transformer, Battery Charge, **35**  
Trough, Oil Drain, **23**  
Tube, Adapter, **51**  
Tube, Exhaust, **33**  
Tube, Oil Pickup, **29**

Valve, Delivery, **14**  
Valve, Exhaust, **18**  
Valve, Intake, **18**

Wall, Back, **28**  
Wire, Retainer, **14**

DO NOT COPY

## Cylinder Block

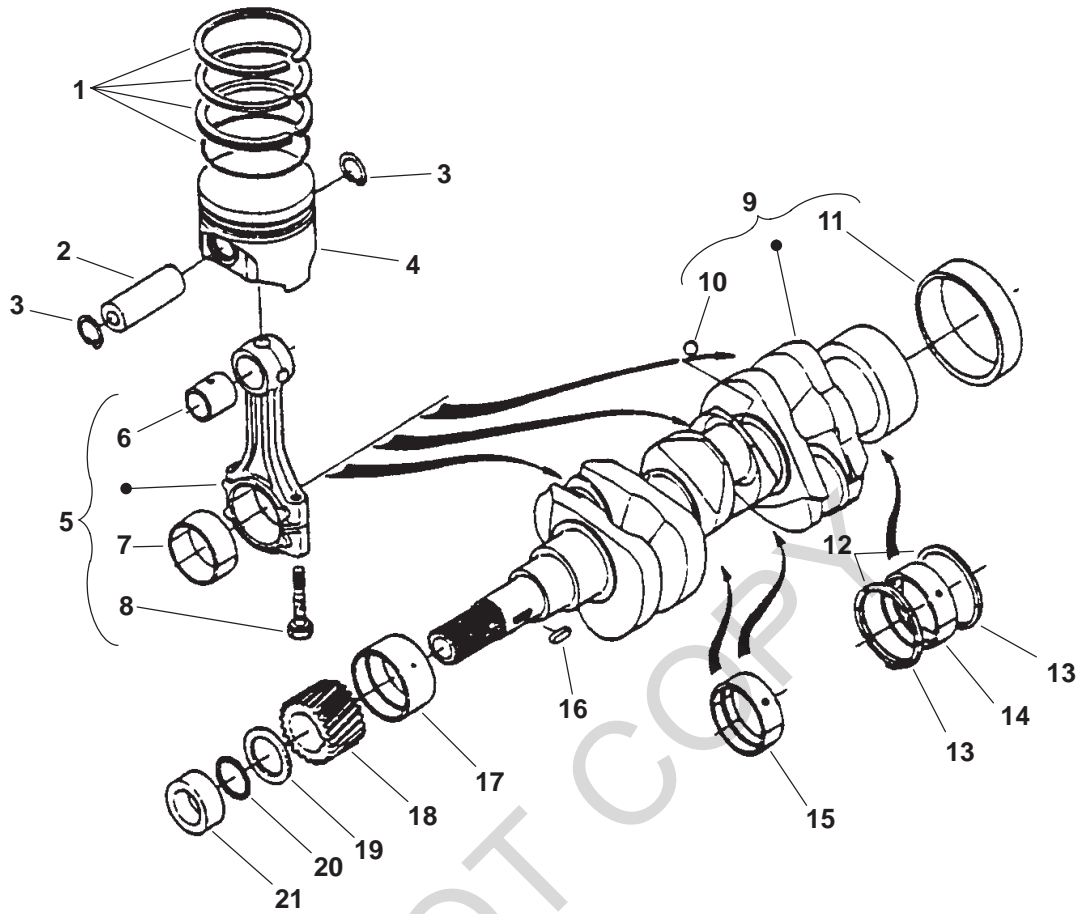


REF NO.	PART NO.	QTY USED	PART DESCRIPTION	REF NO.	PART NO.	QTY USED	PART DESCRIPTION
			Engine, Replacement	9	185-2115	2	*Pin, Hollow
	100-3273	1	HDKAJ, HDKAK Spec A-F	10	185-5413	1	*Gasket, Oil Pump
			HDKAT Spec A-B	11	185-5491	3	*Screw, Hex Head Cap
	100-3617	1	HDKAJ, HDKAK Spec G	12	185-5416	1	*Nut, Flange Hex
			HDKAT Spec C	13	185-5414	1	*Gear, Oil Pump Drive
	100-3707	1	HDKAJ, HDKAK	14	185-5412	1	*Pump, Oil
			Begin Spec H	15	185-5415	1	*Key, Feather
			HDKAT Begin Spec D	16	185-5482	3	*Cap, Sealing
	168-0225	1	Kit, Engine Gasket	17	185-5488	2	*Pin, Hollow
1	185-6704	1	Block Assy, Cylinder (Includes Parts Marked *)	18	185-5490	1	*Cock, Drain
2	185-5484	2	*Cap, Sealing	19	185-2095	1	*O'Ring
3	185-5485	1	*Plug	20	185-2094	1	*Pin, Hollow
4	185-5487	2	*Pin, Straight	21	185-5486	2	*Pin, Straight
5	185-5483	5	*Cap, Sealing	22	185-5489	1	*Cover, Fuel Camshaft
6	185-2233	3	*Plug, Pipe	23	185-5492	1	Switch, Oil Pressure (S15)
7	185-2188	5	*Plug, Pipe				
8	185-2234	1	*Plug, Pipe				

\* - Parts Included in Cylinder Block Assy.

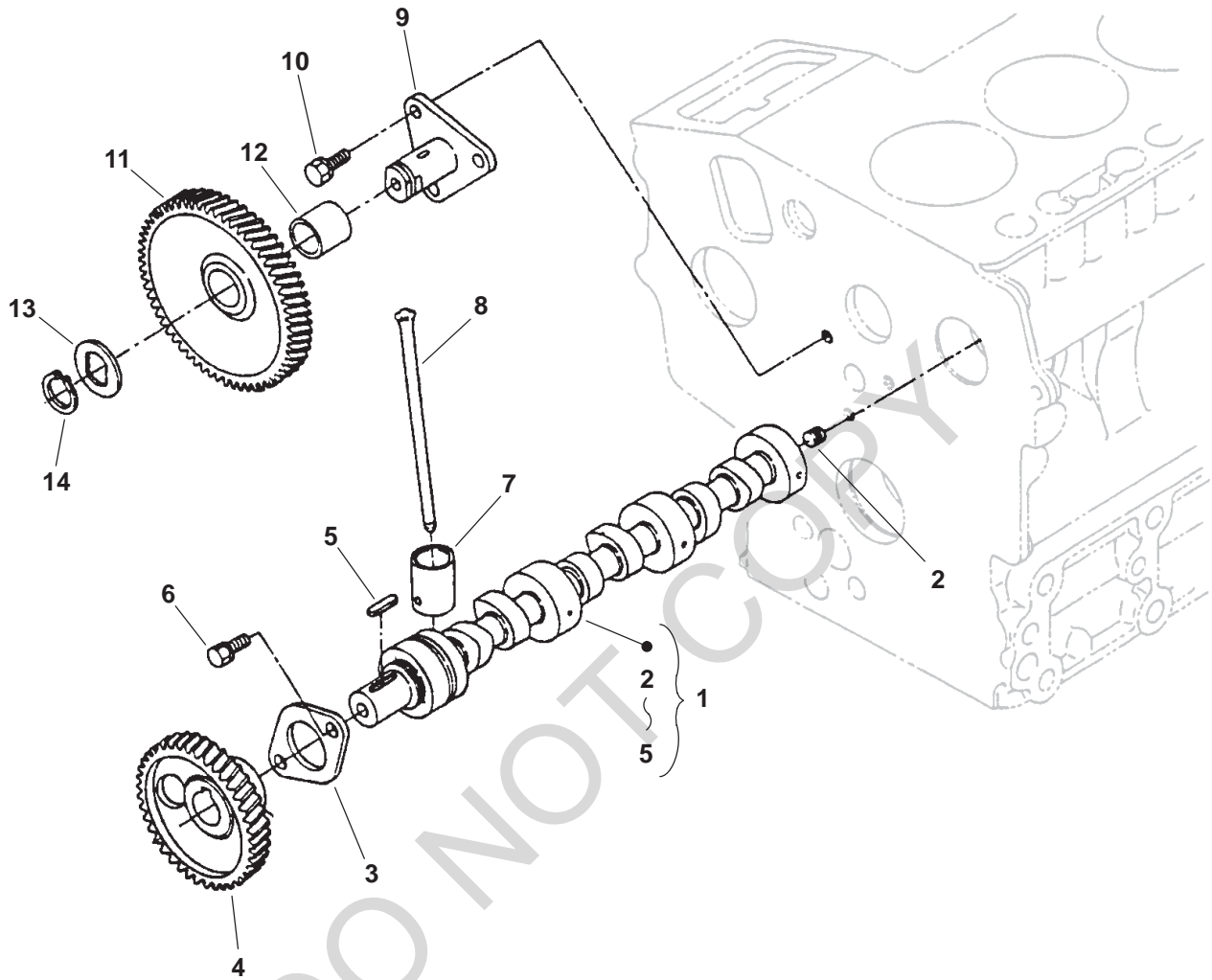


## Crankshaft



REF NO.	PART NO.	QTY USED	PART DESCRIPTION	REF NO.	PART NO.	QTY USED	PART DESCRIPTION
1	185-7076	3	Set, Piston Ring Standard	13	185-2023	2	Bearing, Thrust Standard
	185-5351	3	+ 0.25 mm		185-2030	2	+ 0.20 mm
2	185-5568	3	Pin, Piston		185-2031	2	+ 0.40 mm
3	185-2016	6	Ring, Retaining Piston	14	185-5581	2	Set, Bearing Standard
4	185-5566	3	Standard		185-5360	2	- 0.20 mm
	185-5350	3	+ 0.25 mm		185-5361	2	- 0.40 mm
5	185-5569	3	Rod, Connecting (Includes Bushings and Bolt)	15	185-5580	2	Set, Bearing Standard
6	185-5358	3	Bushing, Connecting Rod		185-2026	2	- 0.20 mm
7	185-5571	3	Bushing, Connecting Rod Standard		185-5357	2	- 0.40 mm
	185-5572	3	- 0.20 mm	16	185-2353	1	Key, Feather
	185-5573	3	- 0.40 mm	17	185-5577	1	Bushing, Crankshaft Standard
8	185-5570	6	Bolt, Connecting Rod		185-5578	1	- 0.20 mm
9	185-6705	1	Crankshaft (Includes Ball and Sleeve)		185-5579	1	- 0.40 mm
10	185-5575	3	Ball	18	185-5576	1	Gear, Crankshaft
11	185-2033	1	Sleeve	19	185-5583	1	Slinger, Oil
12	185-2022	2	Bearing, Thrust Standard	20	185-5584	1	O'Ring
	185-2028	2	+ 0.20 mm	21	185-5582	1	Collar
	185-2029	2	+ 0.40 mm				

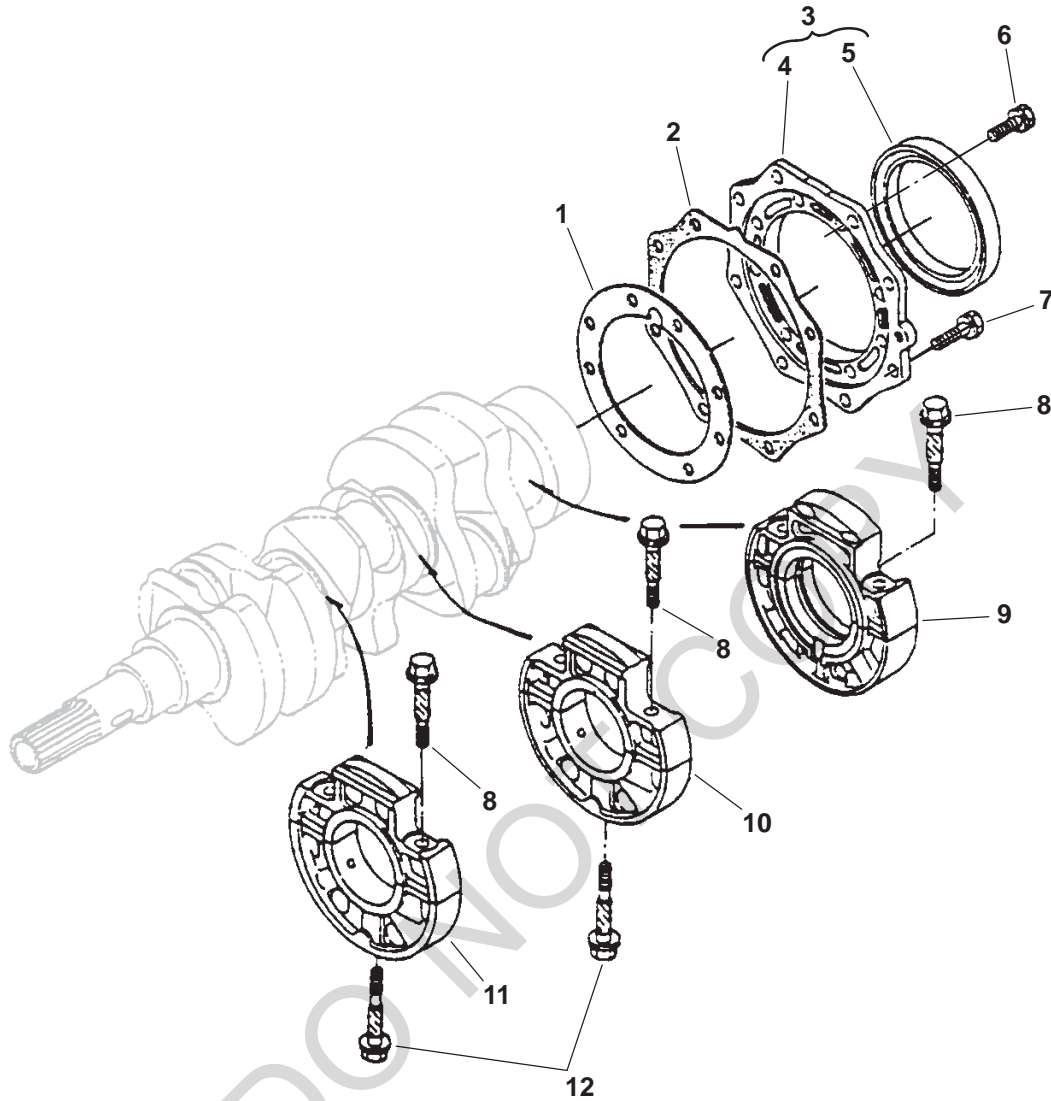
## Camshaft



REF NO.	PART NO.	QTY USED	PART DESCRIPTION	REF NO.	PART NO.	QTY USED	PART DESCRIPTION
1	185-7074	1	Camshaft Assy (Includes Parts Marked *)	9	185-5565	1	Shaft, Idle Gear
2	185-5558	1	*Screw, Set	10	185-2387	3	Screw, Hex Washer Head Cap W/ Lock (M6 x 14mm)
3	185-5561	1	*Plate, Retaining	11	185-5562	1	Gear, Idle (Includes Bushing)
4	185-7075	1	*Gear, Camshaft	12	185-5810	1	Bushing, Idle Gear
5	185-5560	1	*Key, Feather	13	185-5563	1	Spacer
6	185-2386	2	Screw, Hex Washer Head W/Lock Cap (M6 x 12mm)	14	185-5564	1	Ring, Retaining
7	185-5554	6	Tappet				
8	185-5555	6	Rod, Push				

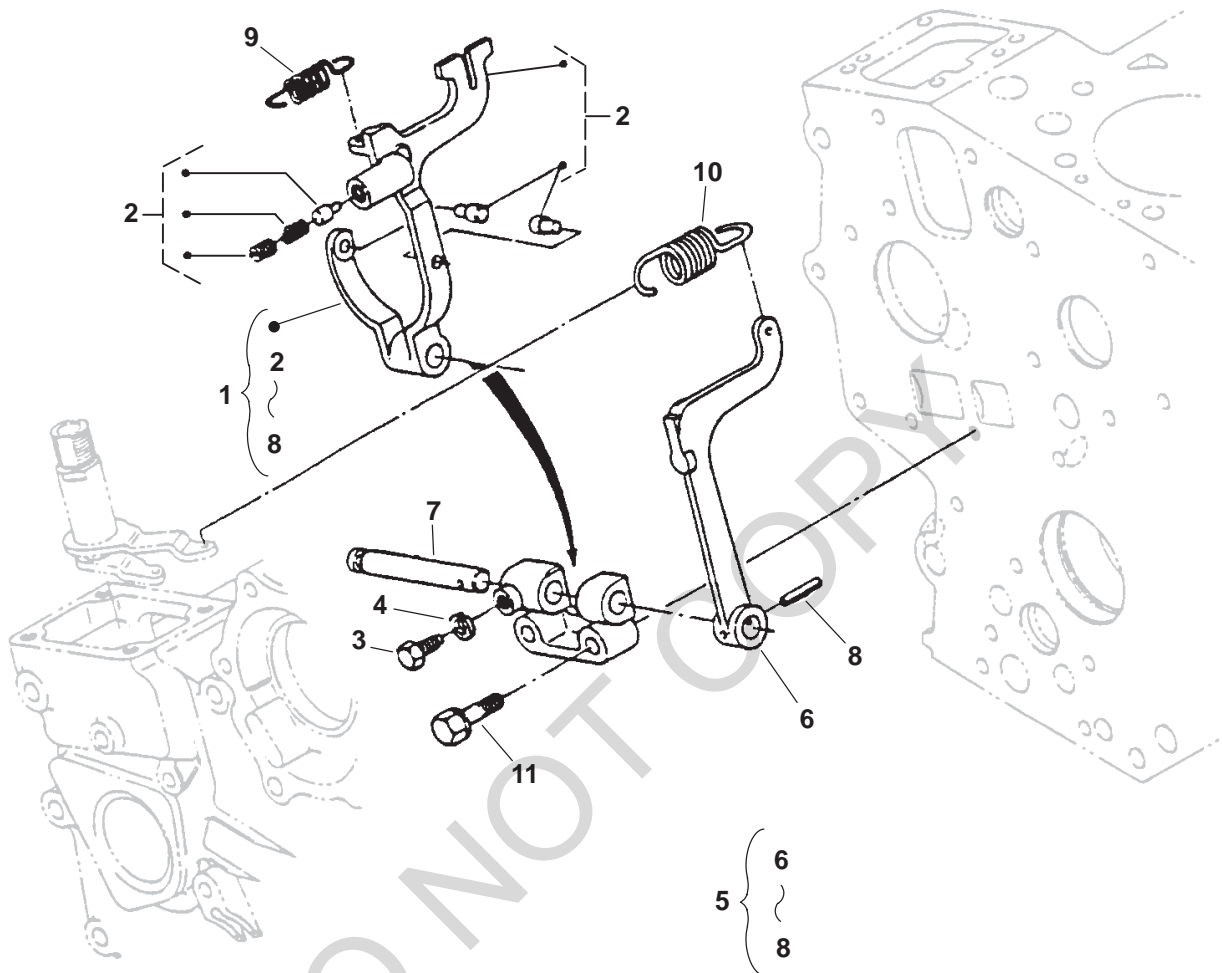
\* - Parts Included in Camshaft Assy.

## Main Bearing Holders



REF NO.	PART NO.	QTY USED	PART DESCRIPTION	REF NO.	PART NO.	QTY USED	PART DESCRIPTION
1	185-5438	1	Gasket	7	185-2559	8	Screw, Hex Head Cap
2	185-7383	1	Gasket	8	185-5515	6	Screw, Hex Head Cap
3	185-7073	1	Cover Assy, Main Bearing Case (Includes Cover and Seal)	9	185-7072	1	Holder, Main Rear Bearing
4	185-5516	1	Cover, Bearing Plate	10	185-5808	1	Holder, Main Center Bearing
5	185-5437	1	Seal, Oil	11	185-5517	1	Holder, Main Front Bearing
6	185-2390	8	Screw, Hex Head W/ Lock Cap Washer (M6 x 20mm)	12	185-5519	2	Bolt, Bearing Case

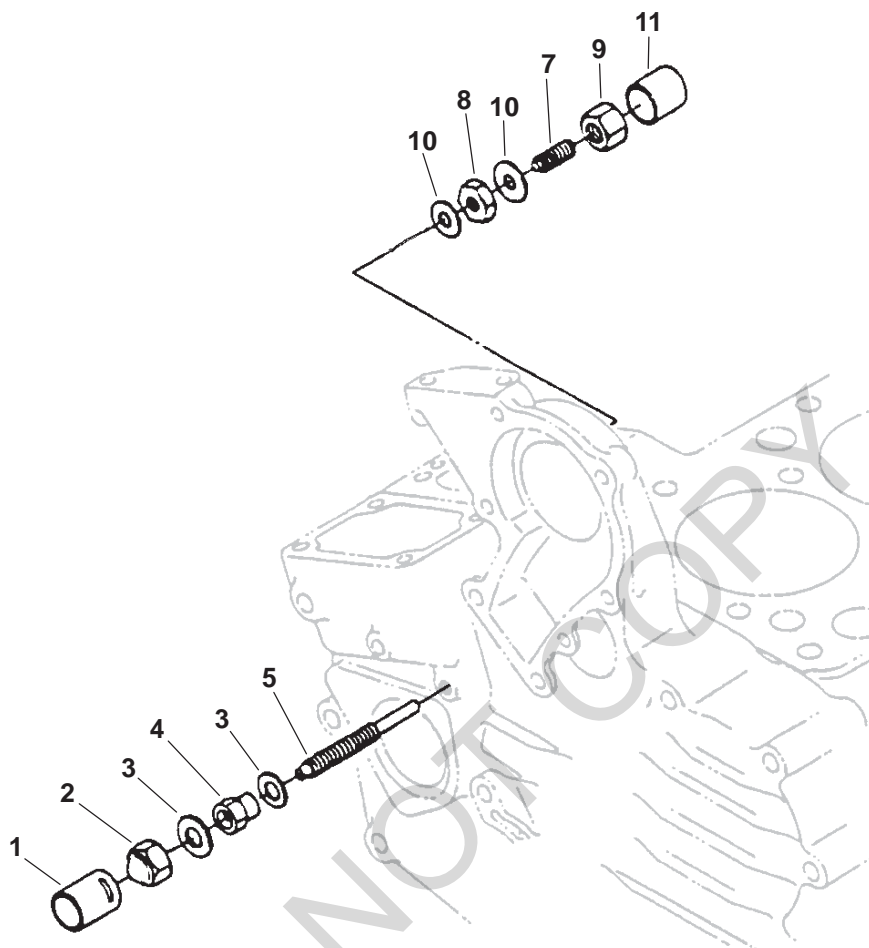
## Fork Lever



REF NO.	PART NO.	QTY USED	PART DESCRIPTION	REF NO.	PART NO.	QTY USED	PART DESCRIPTION
1	185-6945	1	Lever Assy, Fork (Includes Parts Marked *)	8	185-5696	1	*Pin, Spring
2	185-7079	1	*Lever, Inner Fork	9	185-6947	1	Spring, Start
3	185-2173	1	*Screw, Hex Head Cap	10	185-6946	1	Spring, Governor
4	185-6999	1	*Washer, Spring Lock	11	185-2393	2	Screw, Hex Head Cap (M6 x 35mm)
5	185-5701	1	*Lever Assy, Outer Fork (Includes Lever, Shaft and Pin)				
6	185-5702	1	*Lever, Outer Fork				
7	185-5703	1	*Shaft				

\* - Parts Included in Fork Lever Assy.

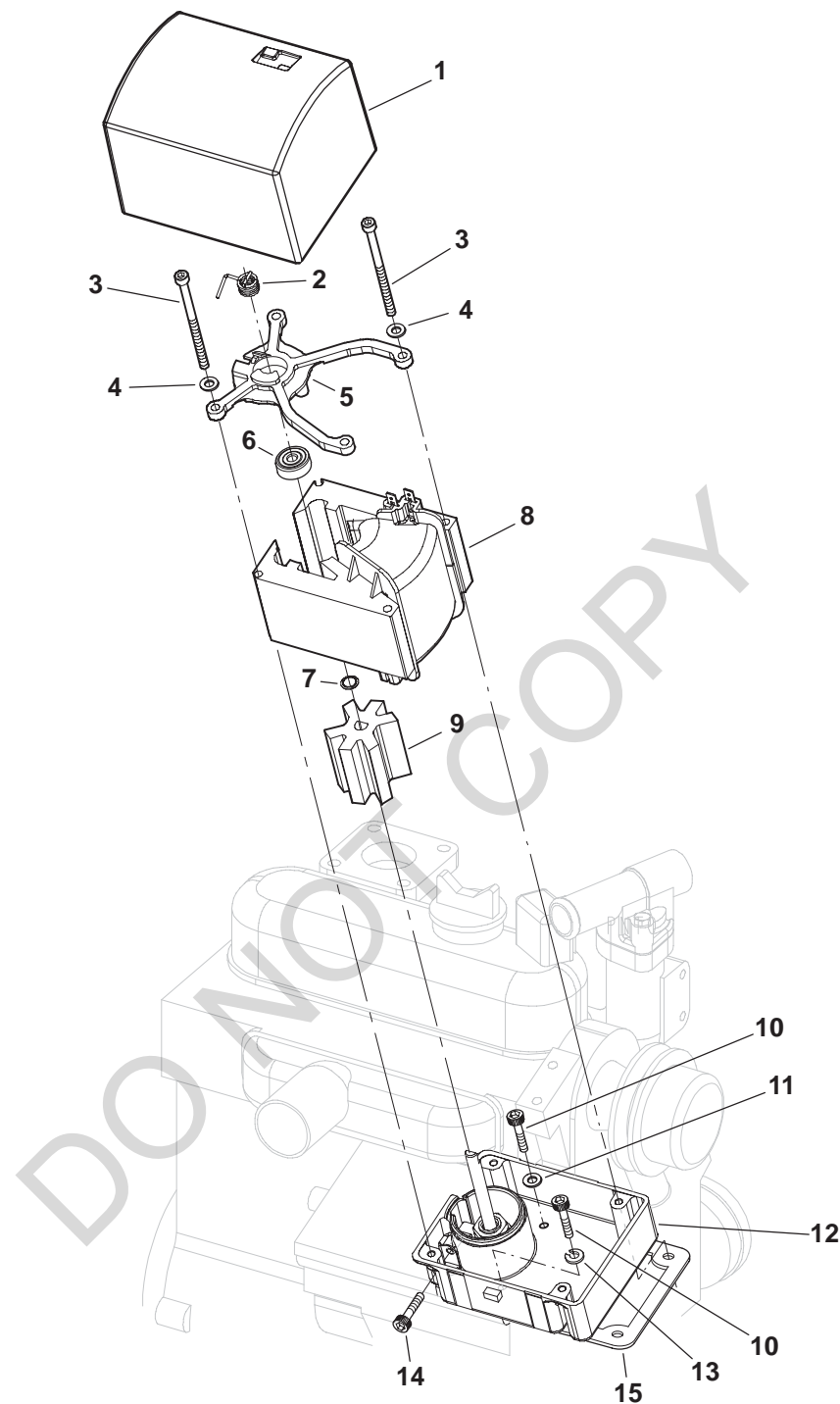
## Speed Control



REF NO.	PART NO.	QTY USED	PART DESCRIPTION	REF NO.	PART NO.	QTY USED	PART DESCRIPTION
1	185-2283	1	Cap	8	185-2180	1	*Nut, Hex
2	185-5685	1	Nut, Cap	9	185-5681	1	*Nut, Cap
3	185-2284	2	Gasket	10	185-2338	2	*Gasket
4	185-6931	1	Nut, Hex	11	185-5682	1	*Cap
5	185-7078	1	Screw, Adjusting				
6	185-5679	1	Idle Assy., Obsolete				
7	185-5680	1	*Bolt, Adjusting (Includes Nuts)				

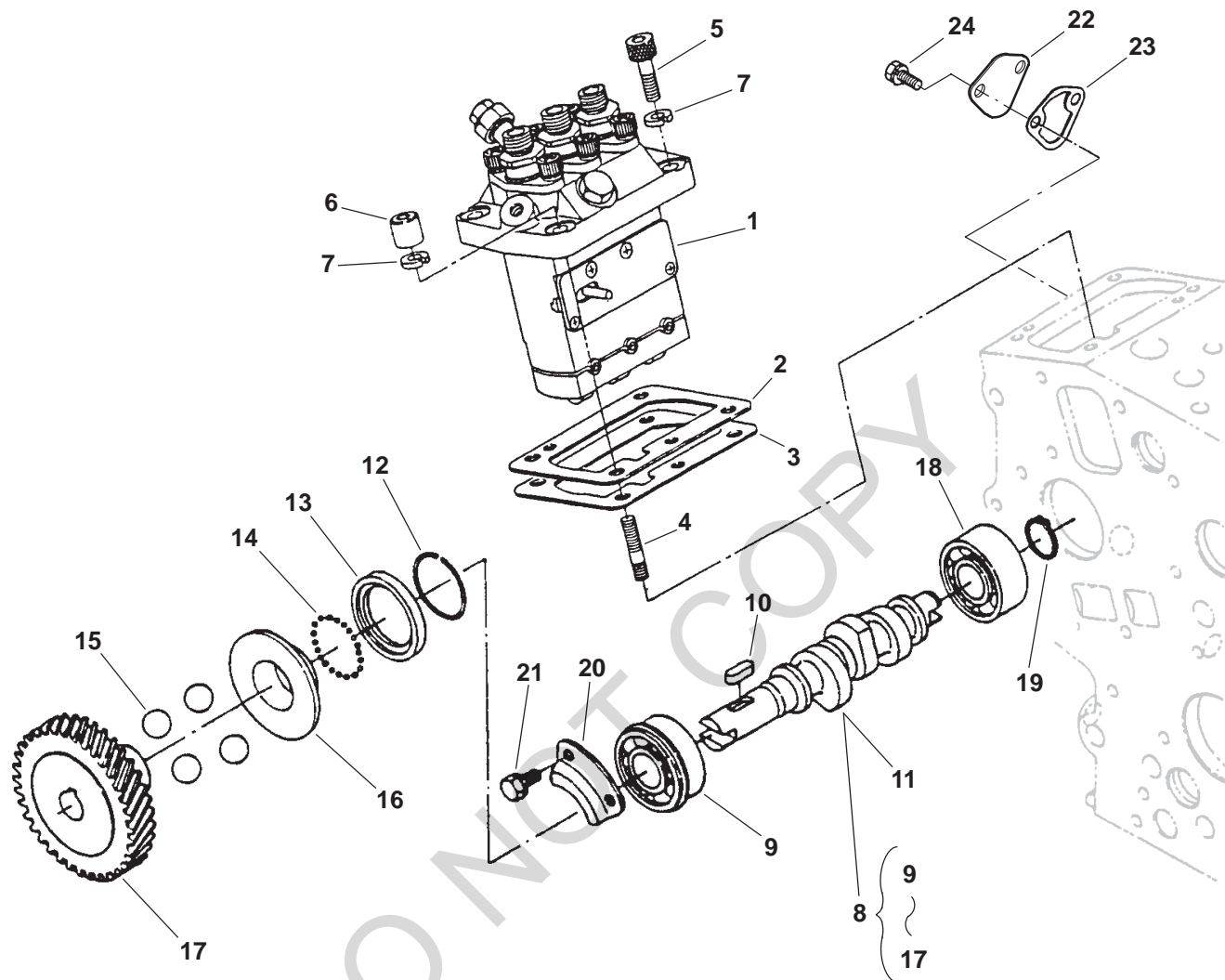
\* - Parts Included in Idle Assy.

# Governor



REF NO.	PART NO.	QTY USED	PART DESCRIPTION	REF NO.	PART NO.	QTY USED	PART DESCRIPTION
1	150-2641	1	Cover, Governor	9	150-2639	1	Rotor, Governor
2	150-2724	1	Spring, Governor	10	725-1027	4	Screw, Socket Head Cap (M6-16)
3	815-0877	4	Screw, Socket Head Cap (M5 x .8 x 80mm)	11	185-2284	2	Gasket
4	740-1002	4	Washer, Flat (M5)	12	185-7267	1	Base, Governor
5	150-2643-S0	1	Carrier Assy (Includes Bearing)	13	850-2006	2	Washer, Lock (M6)
6	510-0184	1	Bearing, Ball	14	802-2506	3	Screw, Socket Set (M5 x .8 x 16mm)
7	518-0672	1	O'Ring, Governor Rotor	15	185-7080	1	Gasket, Governor Base
8	150-2630	1	Stator, Wound Governor				

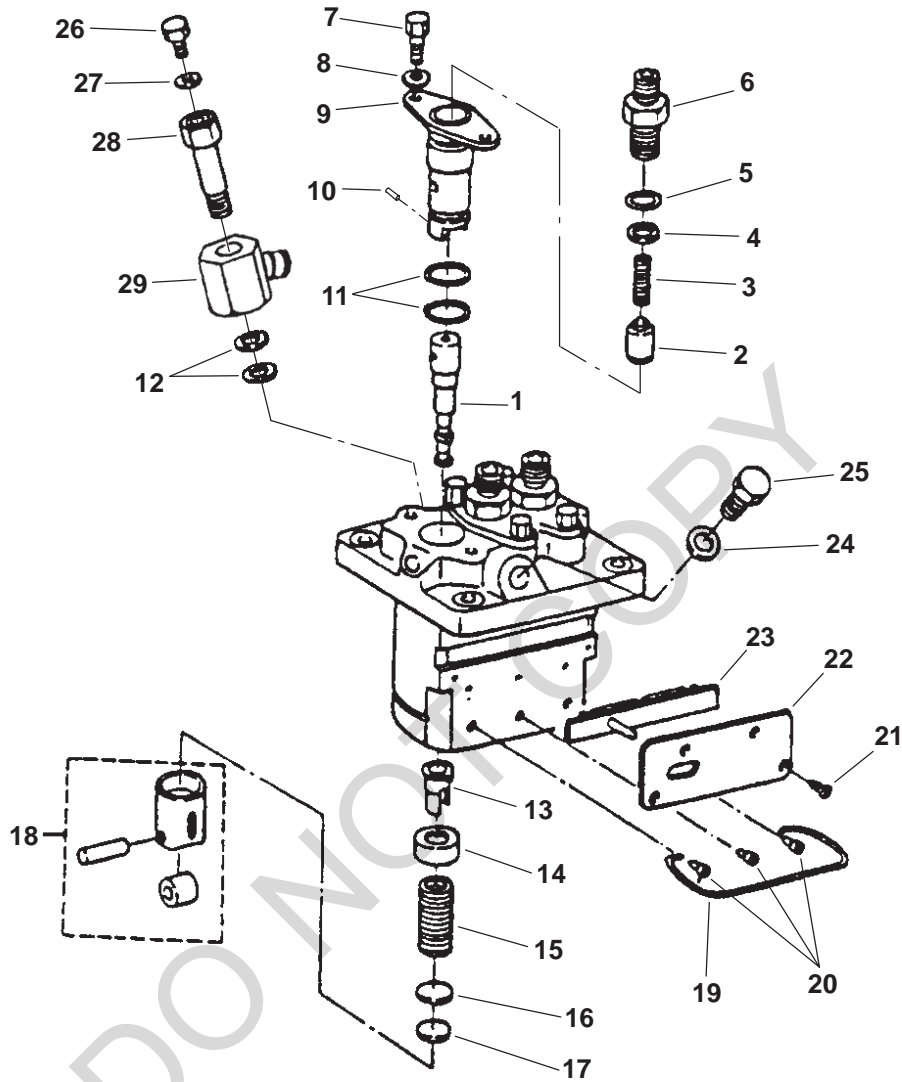
# Injection Pump



REF NO.	PART NO.	QTY USED	PART DESCRIPTION	REF NO.	PART NO.	QTY USED	PART DESCRIPTION
1	185-6937	1	Pump, Injection	14	185-2357	32	*Ball
2	185-6749	1	Shim, Injection Pump	15	185-5633	4	*Ball
	185-6845	1	.20mm	16	185-5631	1	*Sleeve, Governor
3	185-6739	1	Shim, Injection Pump	17	185-5630	1	*Gear, Injection Pump
4	185-5624	2	Stud	18	510-0163	1	Bearing
5	185-5623	2	Screw, Socket Head Cap	19	185-5634	1	Circlip
6	185-5625	2	Nut, Cap	20	185-5635	1	Plate, Retaining
7	185-6759	4	Washer, Spring Lock	21	185-2386	2	Screw, Hex Lock Washer Cap (M6 x 12mm)
8	185-7077	1	Camshaft Assy, Fuel (Includes Parts Marked *)	22	185-5798	1	Cover, Hole
9	185-5629	1	*Bearing, Ball	23	185-6580	1	Gasket, Hole Cover
10	185-2353	1	*Key, Feather	24	185-2389	2	Screw, Hex Head Cap
11	185-6706	1	*Camshaft, Fuel				
12	185-2163	1	*Circlip, Governor Sleeve				
13	185-5632	1	*Case, Governor Ball				

\* - Parts Included in Fuel Camshaft Assy.

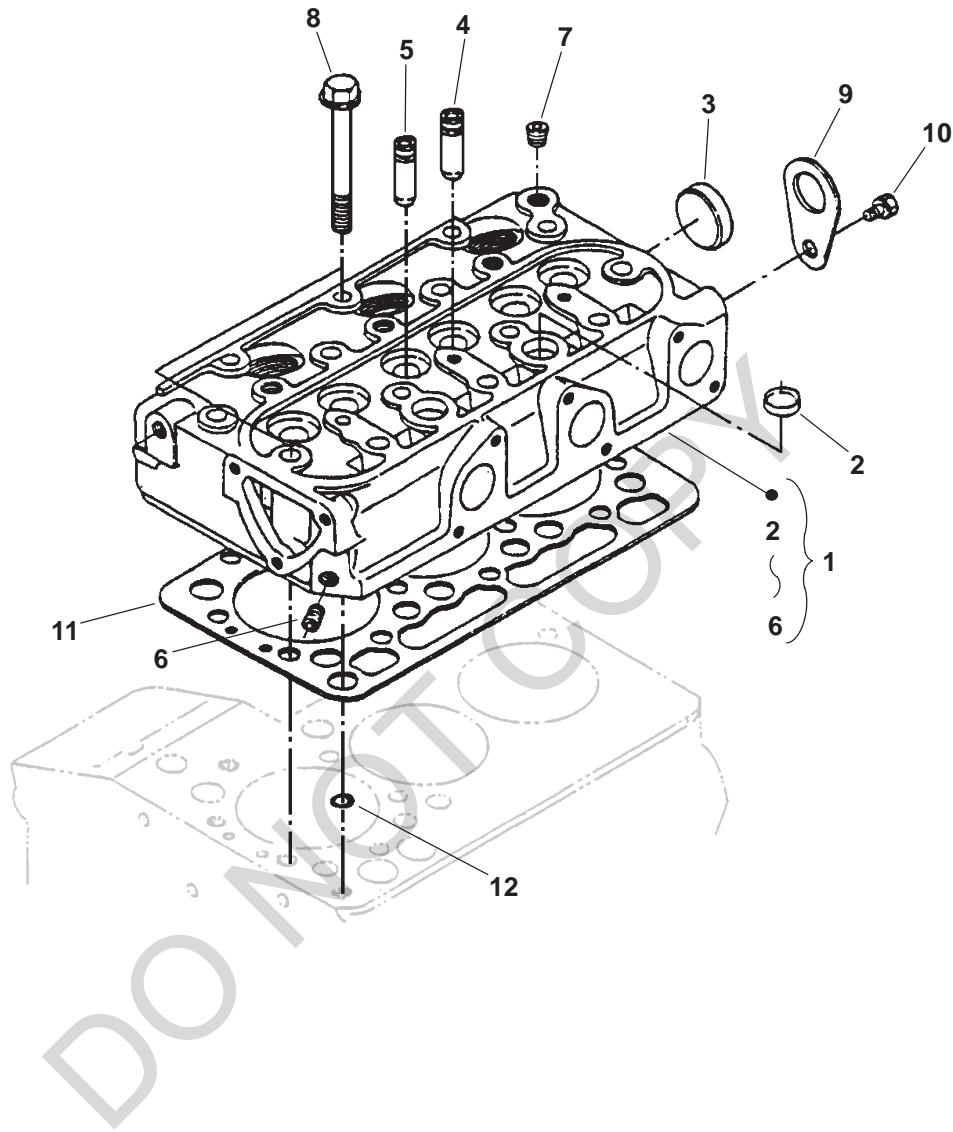
## Injection Pump Components



REF NO.	PART NO.	QTY USED	PART DESCRIPTION	REF NO.	PART NO.	QTY USED	PART DESCRIPTION
	185-6937	1	Pump Assy, Injection	15	185-5652	3	Spring, Plunger
1	185-5638	3	Plunger, Injection Pump	16	185-5654	3	Seat, Lower Spring
2	185-5639	3	Valve, Delivery	17	185-5655	3	Shim
3	185-5640	3	Spring, Delivery Valve	18	185-5649	3	Tappet
4	185-5641	3	Gasket, Delivery Valve	19	185-6707	1	Wire, Retainer
5	185-5643	3	O'Ring	20	185-5650	3	Pin
6	185-5642	3	Holder, Delivery Valve	21	185-5658	4	Screw, Machine
7	185-5647	6	Screw, Round Head Machine	22	185-5818	1	Plate
8	185-5648	6	Washer	23	185-5817	1	Rack, Control
9	185-5644	3	Flange, Sleeve	24	185-5820	1	Gasket, Injection Pump
10	185-5645	3	Pin, Joint	25	185-5819	1	Bolt
11	185-5646	6	O'Ring	26	185-5662	1	Screw
12	185-5661	2	O'Ring	27	185-5663	1	Gasket
13	185-5659	3	Sleeve, Control	28	185-5660	1	Screw, Follow
14	185-5653	3	Seat, Upper Spring	29	185-5626	1	Joint, Eye



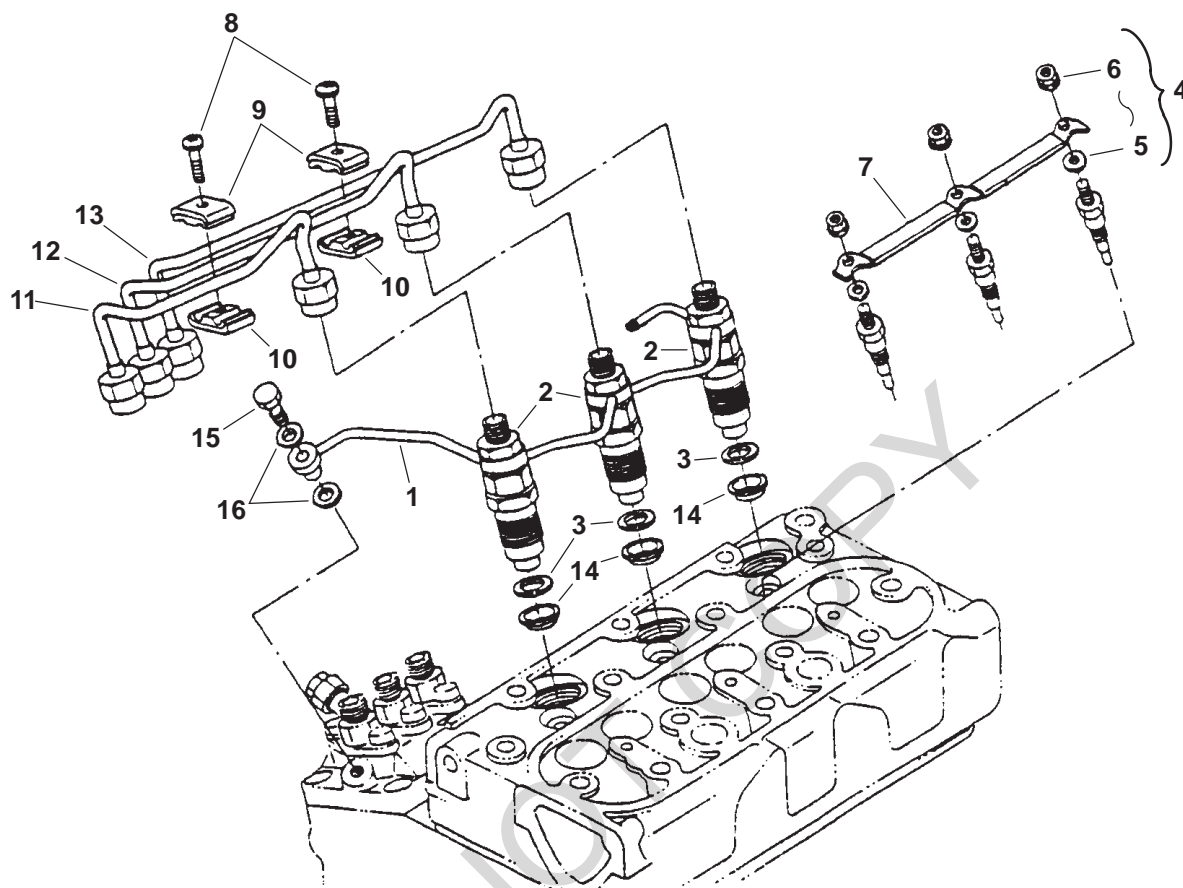
## Cylinder Head



REF NO.	PART NO.	QTY USED	PART DESCRIPTION	REF NO.	PART NO.	QTY USED	PART DESCRIPTION
1	185-5805	1	Head Assy, Cylinder (Includes Parts Marked *)	8	185-5503	14	Bolt, Cylinder Head
2	185-2413	2	*Cap, Sealing	9	185-2414	1	Eye, Lifting
3	185-2411	1	*Cap, Sealing	10	185-6956	1	Screw, Hex Head Cap
4	185-5501	3	*Guide, Exhaust Valve	11	185-6120	1	Gasket, Cylinder Head
5	185-5500	3	*Guide, Intake Valve	12	185-2095	1	O'Ring
6	185-2188	1	*Plug, Pipe				
7	185-5502	1	Plug, Pipe				

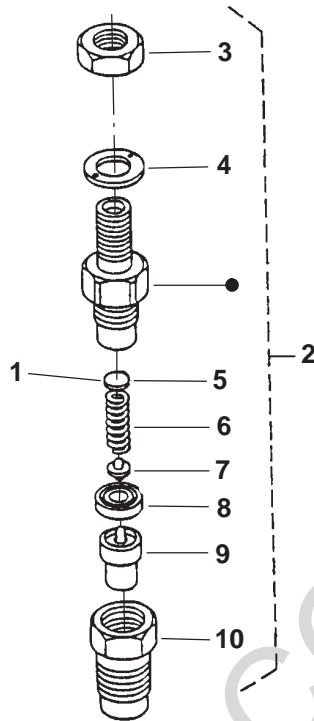
\* - Parts Included in Cylinder Head Assy.

## Injection Nozzle



REF NO.	PART NO.	QTY USED	PART DESCRIPTION	REF NO.	PART NO.	QTY USED	PART DESCRIPTION
1	185-6948	1	Pipe, Overflow	9	185-2345	2	Clamp, Top Pipe
2	185-6738	3	Holder, Nozzle	10	185-5612	2	Clamp, Bottom Pipe
3	185-5337	3	Gasket	11	185-7389	1	Pipe, Injection
4	185-5421	3	Plug, Glow (HR5) (Includes Washer and Nut)	12	185-7390	1	Pipe, Injection
5	185-7004	3	Washer, Plain	13	185-7397	1	Pipe, Injection
6	185-5615	3	Nut, Flange	14	185-5985	3	Seal, Heat
7	185-5823	1	Cord, Glow Plug	15	185-7082	1	Screw, Air Bleeder
8	185-2385	2	Screw, Pan Head Machine W/Lock Washer	16	185-2284	2	Gasket

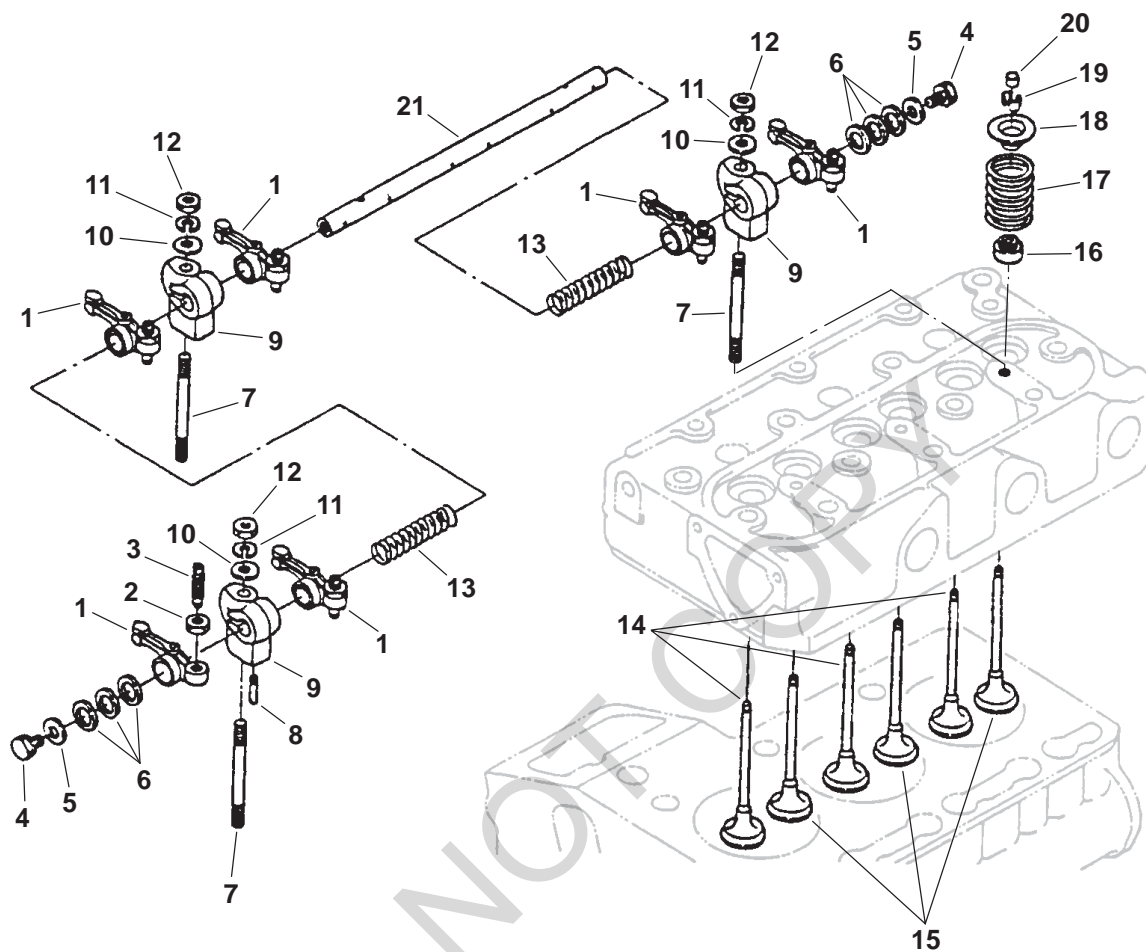
## Injection Nozzle Components



REF NO.	PART NO.	QTY USED	PART DESCRIPTION	REF NO.	PART NO.	QTY USED	PART DESCRIPTION
1	185-5363	3	Washer Assy – Includes the Following Adjusting Washers:				
	185-5364	3	0.900 mm		185-5391	3	1.575 mm
	185-5365	3	0.925 mm		185-5392	3	1.600 mm
	185-5366	3	0.950 mm		185-5393	3	1.625 mm
	185-5367	3	0.975 mm		185-5394	3	1.650 mm
	185-5368	3	1.000 mm		185-5395	3	1.675 mm
	185-5369	3	1.025 mm		185-5396	3	1.700 mm
	185-5370	3	1.050 mm		185-5397	3	1.725 mm
	185-5371	3	1.075 mm		185-5398	3	1.750 mm
	185-5372	3	1.100 mm		185-5399	3	1.775 mm
	185-5373	3	1.125 mm		185-5400	3	1.800 mm
	185-5374	3	1.150 mm		185-5401	3	1.825 mm
	185-5375	3	1.175 mm		185-5402	3	1.850 mm
	185-5376	3	1.200 mm		185-5403	3	1.875 mm
	185-5377	3	1.225 mm		185-5404	3	1.900 mm
	185-5378	3	1.250 mm		185-5405	3	1.925 mm
	185-5379	3	1.275 mm	2	185-5406	3	1.950 mm
	185-5380	3	1.300 mm	2	185-6738	3	Holder Assy, Nozzle (Includes Parts Marked *)
	185-5381	3	1.325 mm	3	185-5616	3	*Nut, Hex
	185-5382	3	1.350 mm	4	185-5621	3	*Washer
	185-5383	3	1.375 mm	5	185-5364	3	*Washer, Adjusting
	185-5384	3	1.400 mm	6	185-5617	3	*Spring
	185-5385	3	1.425 mm	7	185-5619	3	*Rod, Push
	185-5386	3	1.450 mm	8	185-5618	3	*Spacer
	185-5387	3	1.475 mm	9	185-5622	3	*Nozzle
	185-5388	3	1.500 mm	10	185-6825	3	*Nut, Nozzle
	185-5389	3	1.525 mm				
	185-5390	3	1.550 mm				

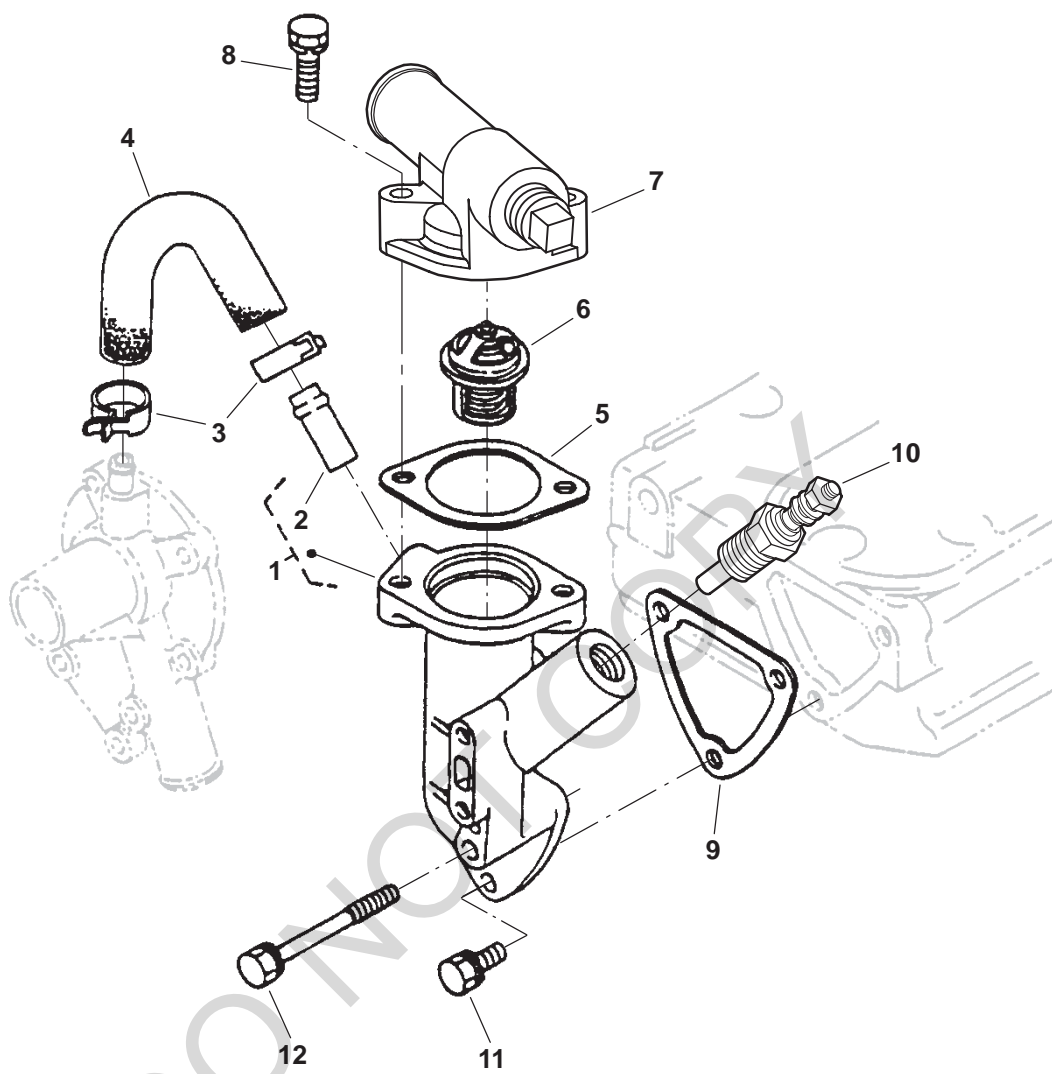
\* – Parts Included in Nozzle Holder Assy.

## Rocker Arm



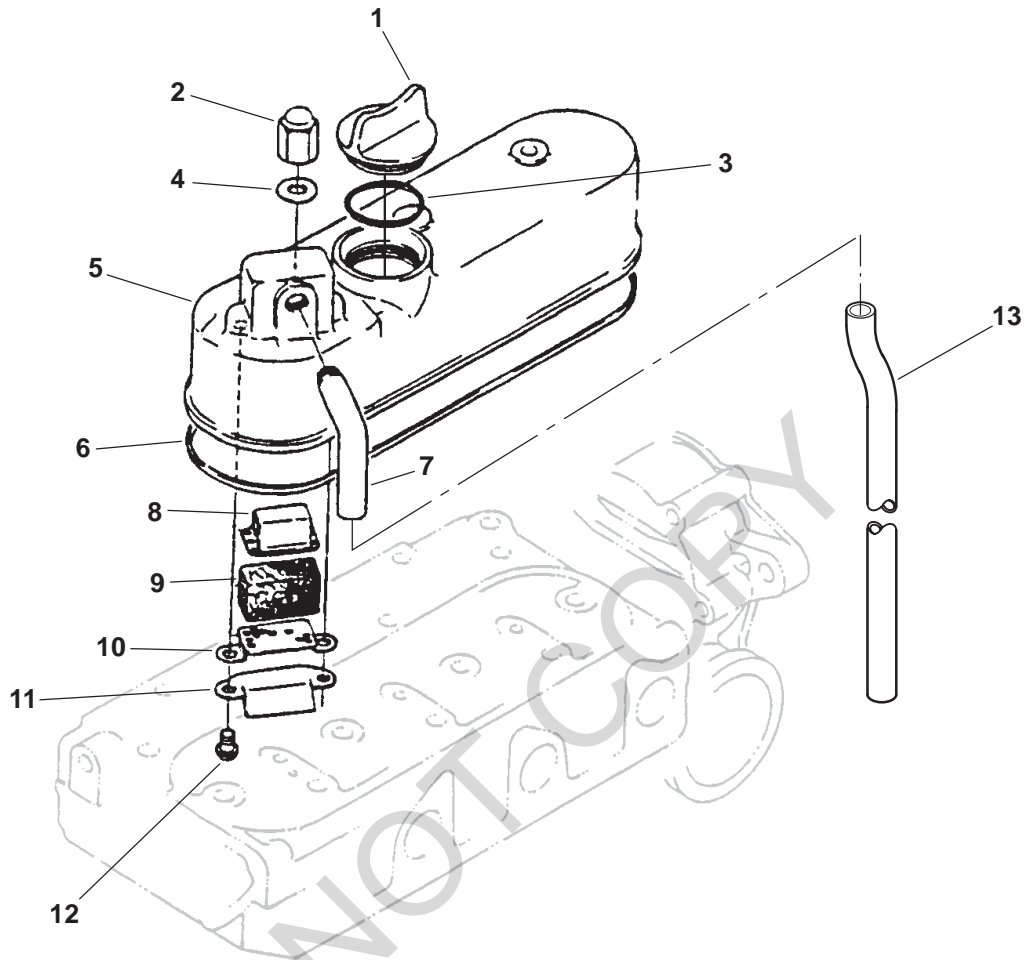
REF NO.	PART NO.	QTY USED	PART DESCRIPTION	REF NO.	PART NO.	QTY USED	PART DESCRIPTION
1	185-5551	6	Arm, Rocker (Includes Nut and Screw)	11	185-6759	3	Washer, Spring Lock
2	185-5553	6	Nut	12	185-4255	3	Nut, Flange
3	185-5552	6	Screw, Adjusting	13	185-5550	2	Spring, Rocker Arm
4	185-2386	2	Screw, Hex Head Cap (M6 x 12mm)	14	185-5537	3	Valve, Intake
5	185-5545	2	Washer, Flat	15	185-5538	3	Valve, Exhaust
6	185-7086	6	Washer, Flat	16	185-5348	6	Seal, Valve Stem
7	185-5547	3	Stud	17	185-5539	6	Spring, Valve
8	185-2351	1	Screw, Set	18	185-5540	6	Retainer, Valve Spring
9	185-5546	3	Bracket, Rocker Arm	19	185-5541	6	Collet, Valve Spring
10	526-2080	3	Washer, Flat (M6)	20	185-5542	6	Cap, Valve
				21	185-7085	1	Shaft, Rocker Arm

## Water Outlet



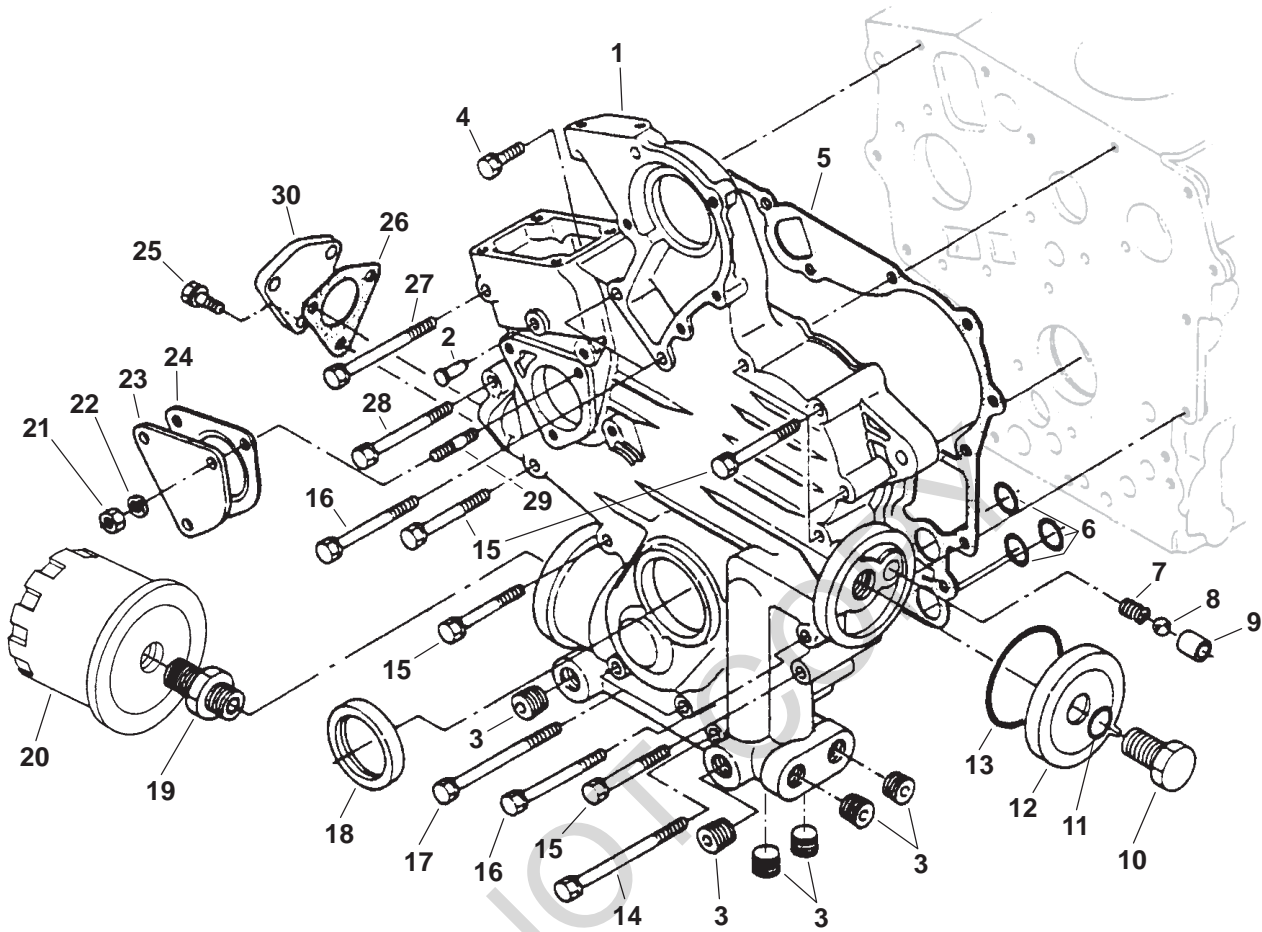
REF NO.	PART NO.	QTY USED	PART DESCRIPTION	REF NO.	PART NO.	QTY USED	PART DESCRIPTION
1	185-5718	1	Flange, Water Pump (Includes Water Return Pipe)	7	185-5792	1	Cover, Thermostat
2	185-5719	1	Pipe, Water Return	8	185-7084	2	Bolt
3	185-6667	2	Band, Pipe	9	185-5720	1	Gasket, Water Flange
4	185-5722	1	Pipe, Water Return	10	193-0318	1	Sender, Water Temperature
5	185-2238	1	Gasket, Thermostat	11	185-2388	2	Bolt (M6 x 16mm)
6	185-5458	1	Thermostat	12	185-5721	1	Bolt

## Valve Cover



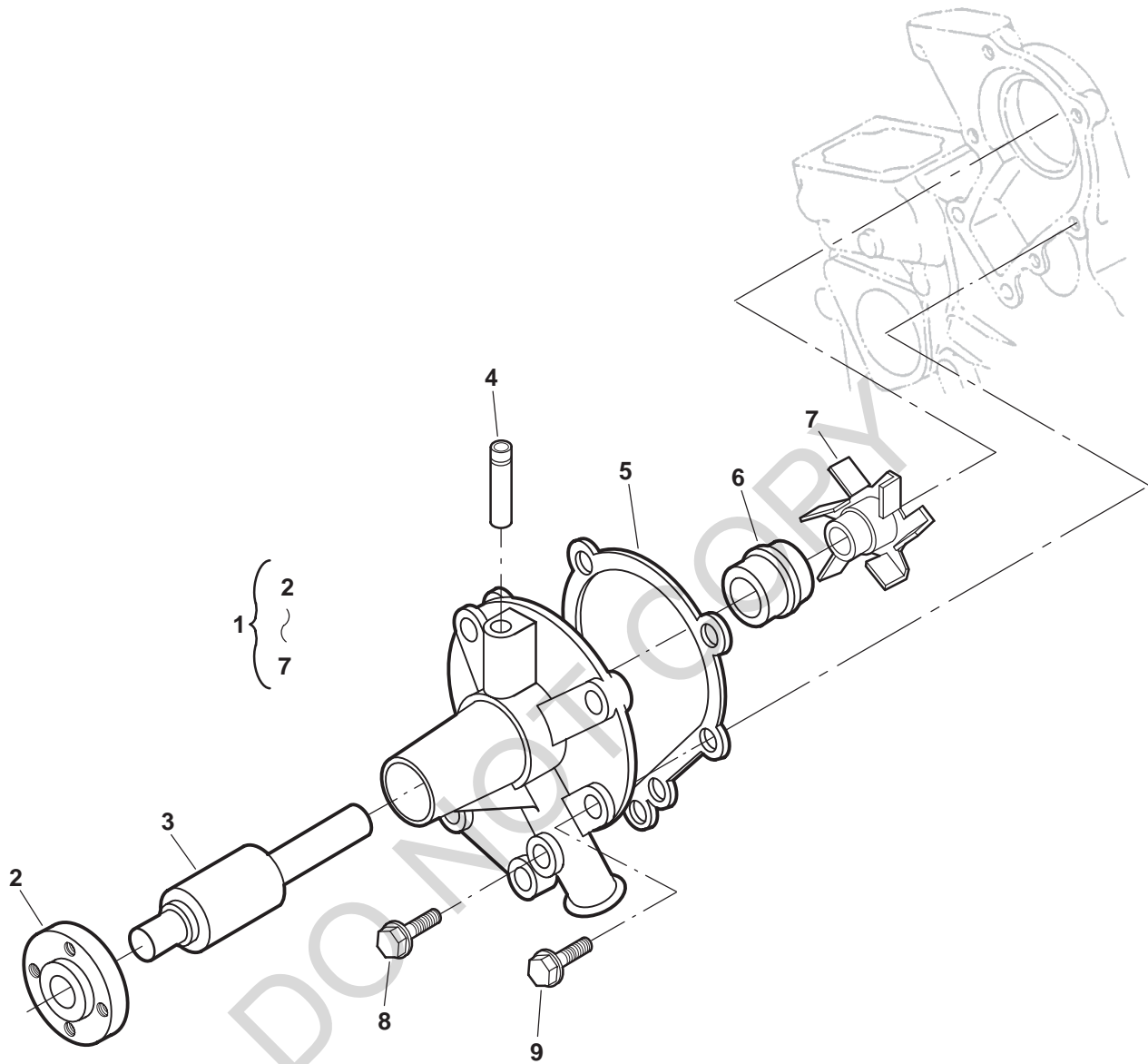
REF NO.	PART NO.	QTY USED	PART DESCRIPTION	REF NO.	PART NO.	QTY USED	PART DESCRIPTION
1	185-5407	1	Cap, Oil Fill	8	185-5522	1	Cover, Breather Element
2	185-5529	3	Nut, Cap	9	185-5523	1	Element, Breather
3	185-2349	1	Seal, Oil Fill Cap	10	185-5521	1	Plate, Breather Element
4	185-2284	3	O'Ring	11	185-5524	1	Shield, Breather Oil
5	185-7071	1	Cover, Valve	12	185-5747	2	Screw, Pan Head Lock Washer
6	185-5807	1	Gasket, Valve Cover	13	185-5525	1	Hose, Breather
7	185-5520	1	Elbow, Breather				

## Gearcase



REF NO.	PART NO.	QTY USED	PART DESCRIPTION	REF NO.	PART NO.	QTY USED	PART DESCRIPTION
1	185-5800	1	Gearcase Assy (Includes Pin and Plugs)	16	185-5507	3	Screw, Hex Head Cap (M6 x 1 x 62mm)
2	185-5506	1	Pin, Start Spring	17	185-5745	2	Bolt
3	185-5505	8	Plug, Pipe	18	185-5410	1	Seal, Front Oil
4	185-2389	1	Screw, Hex Head Cap (M6 x 18mm)	19	185-2124	1	Nipple, Hex Pipe
5	185-7382	1	Gasket, Gearcase	20	122-0833	1	Filter, Oil
6	185-2374	3	O'Ring	21	185-4255	3	Nut, Hex
7	185-5509	1	Spring	22	185-6759	3	Washer, Spring Lock
8	185-6711	1	Ball	23	185-5512	1	Cover
9	185-5510	1	Seat, Valve	24	185-5513	1	Gasket
10	185-5742	1	Bolt	25	185-2389	3	Bolt (M6 x 18mm)
11	185-5744	1	O'Ring	26	185-2309	1	Gasket, Flange
12	185-5741	1	Cover	27	185-7070	1	Screw, Hex Head Cap (M6 x 70mm)
13	185-5743	1	O'Ring	28	185-2395	1	Bolt (M6 x 60mm)
14	185-5746	1	Screw, Hex Head Cap (M6 x 1 x 87mm)	29	185-2105	3	Stud
15	185-7069	7	Screw, Hex Head Cap (M6 x 50mm)	30	185-6257	1	Cover

## Water Pump Components

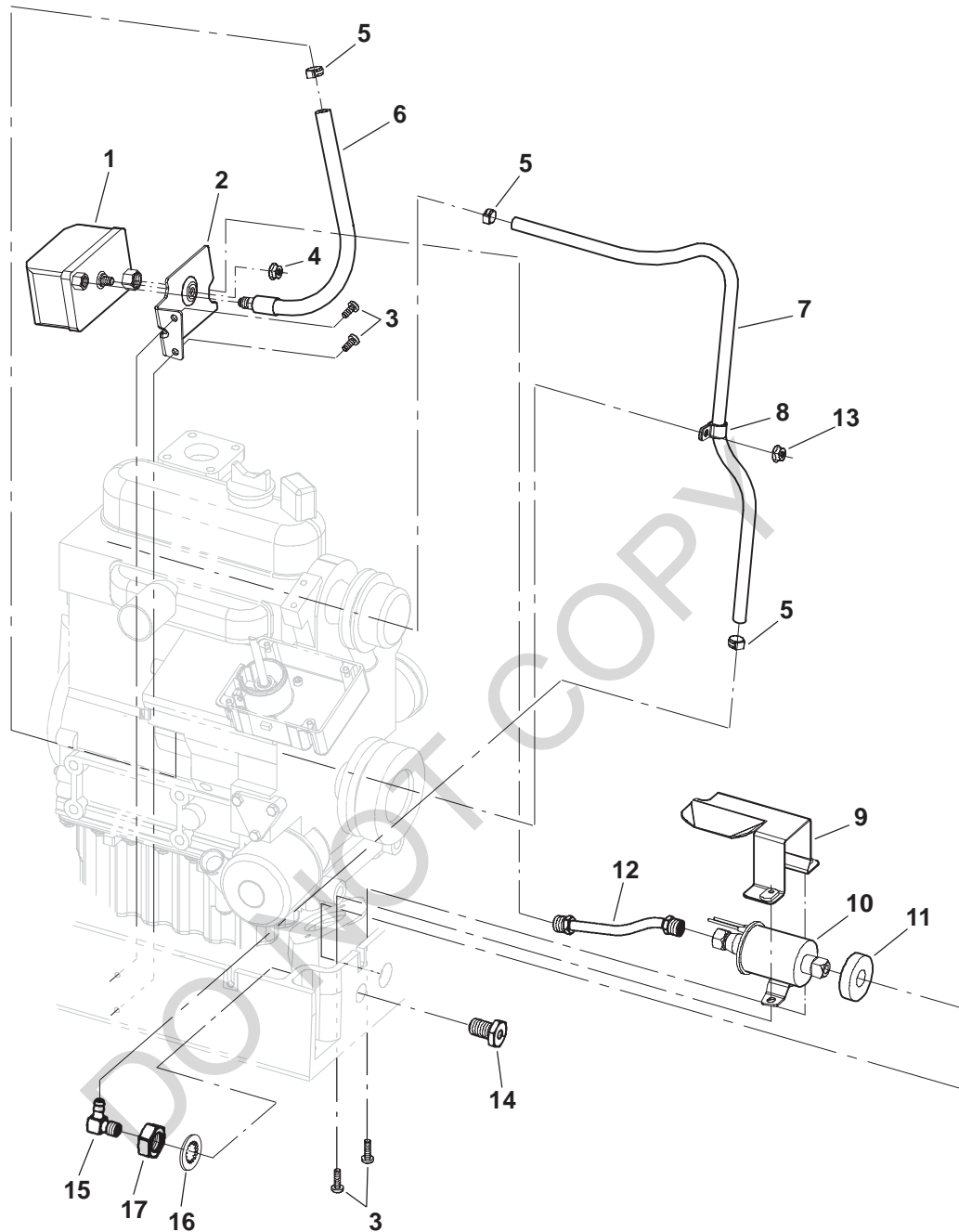


REF NO.	PART NO.	QTY USED	PART DESCRIPTION	REF NO.	PART NO.	QTY USED	PART DESCRIPTION
1	185-5433	1	Pump, Water (Includes Parts Marked *)	7	185-5715	1	*Impeller
2	185-5712	1	*Flange, Water Pump	8	185-5717	1	Bolt
3	185-5713	1	*Bearing, Ball	9	185-2559	4	Bolt
4	185-5716	1	*Pipe, Return				
5	185-5434	1	*Gasket, Water Pump				
6	185-5714	1	*Seal				

\* – Parts Included in Water Pump.



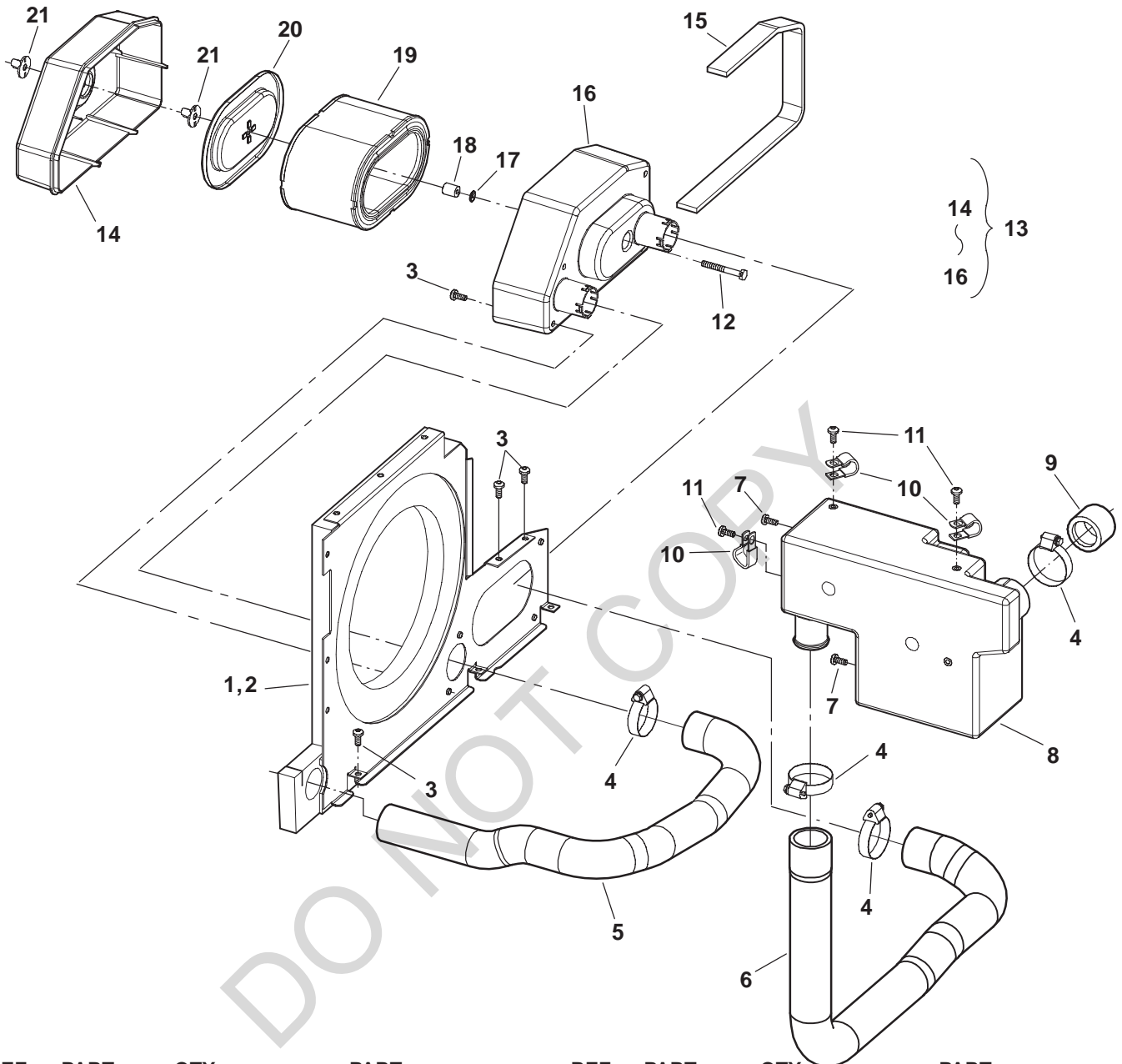
## Fuel System



REF NO.	PART NO.	QTY USED	PART DESCRIPTION	REF NO.	PART NO.	QTY USED	PART DESCRIPTION
1	149-2513	1	Filter, Fuel	9	403-3863-02	1	Trough, Oil Drain
2	149-2585-02	1	Bracket, Fuel Filter	10	149-2583	1	Pump, Fuel (E2)
3	823-0003-05	4	Screw, Lock Flange (M6 x 1 x 14mm)	11	403-3860	1	Seal, Fuel Pump
4	870-0257	1	Nut, Self Lock (1/4-20)	12	149-2584	1	Line, Fuel Filter
5	503-0685	3	Clamp, Hose	13	870-2054	1	Nut, Lock Flange (M6 x 1)
6	149-2580	1	Line, Fuel Injection Pump	14	502-1296-02	1	Fitting, Bulkhead
7	503-2052	1	Line, Fuel Return	15	502-0313	1	Elbow, 90°
8	332-1554	1	Clamp, Loop	16	854-0028	1	Washer, IT Lock (5/8")
				17	868-0007	1	Nut, Hex Jam (5/8-18)

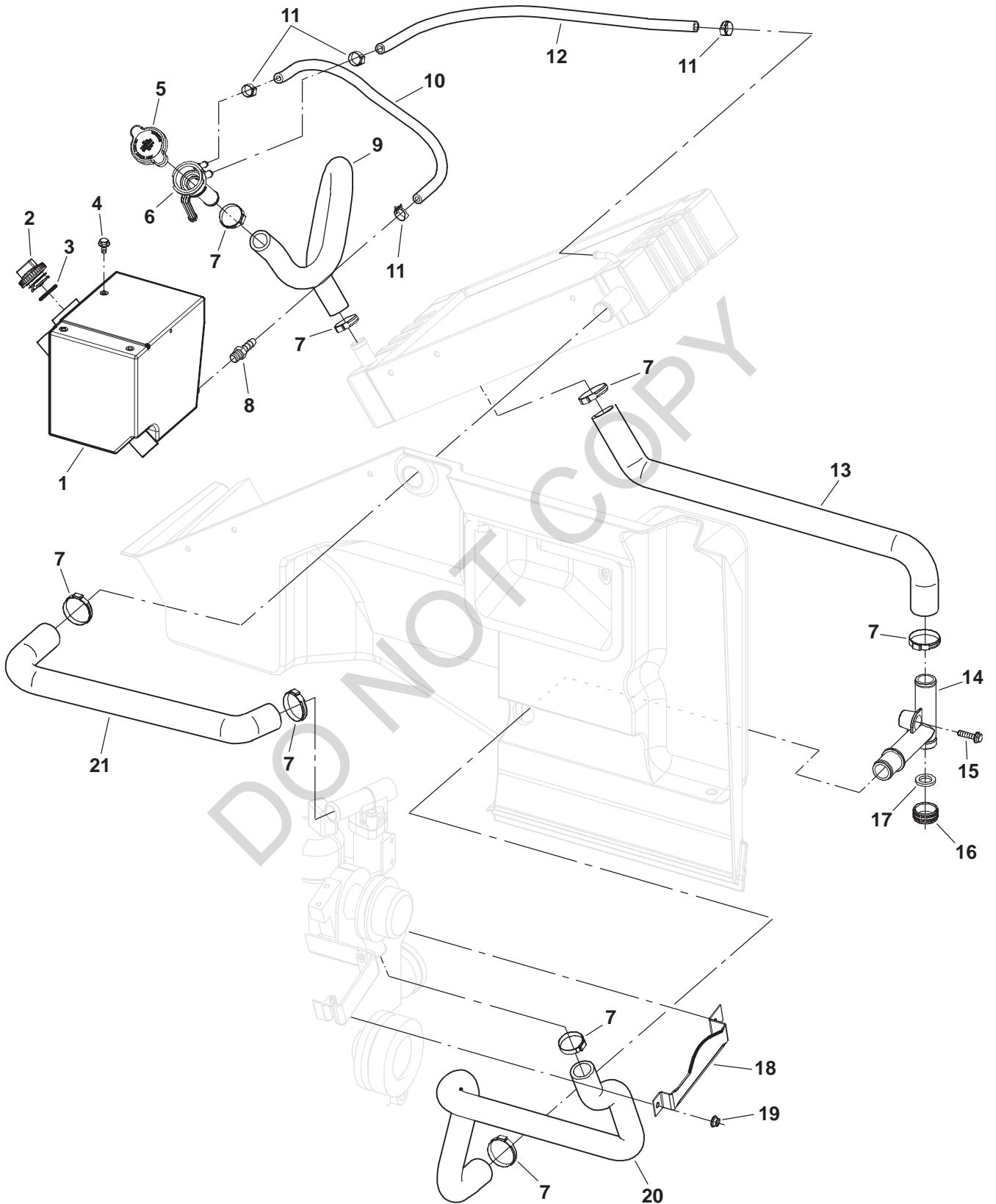
DO NOT COPY

## Air Intake



REF NO.	PART NO.	QTY USED	PART DESCRIPTION	REF NO.	PART NO.	QTY USED	PART DESCRIPTION
1	134-5063-S0	1	Baffle Assy, Inlet (Includes Insulation)	12	800-0603-01	1	Screw, Hex Head Machine (1/4-20 x 2)
2	405-5756	1	Insulation, Inlet Baffle	13	140-3233	1	Kit, Air Cleaner (Includes Parts Marked*)
3	823-0003-05	7	Screw, Pan Head (M6 x 1 x 14mm)	14	140-3232	1	*Cover, Air Cleaner
4	503-0429	4	Clamp, Hose	15	140-2956	1	*Seal, Housing
5	503-1979	1	Hose, Intake (Dirty)	16	140-3231	1	*Housing, Air Cleaner
6	503-1985	1	Hose, Intake (Clean)	17	870-0540-03	1	Nut, Push-On
7	823-1002-04	2	Screw, Pan Head Machine (M6 x 1 x 14mm)	18	140-2536-05	1	Seal, Air Cleaner Spacer
8	134-5126	1	Resonator, Intake	19	140-2897	1	Element, Air Cleaner
9	140-2898	1	Sleeve, Air Intake	20	140-2961-02	1	Cover, Air Cleaner Element
10	332-1356	3	Clamp, Loop (3/4")	21	865-0029	2	Nut, Wing (1/4-20)
11	823-1002-04	2	Screw, Pan Head Machine (M6 x 1 x 10mm)				

# Cooling System

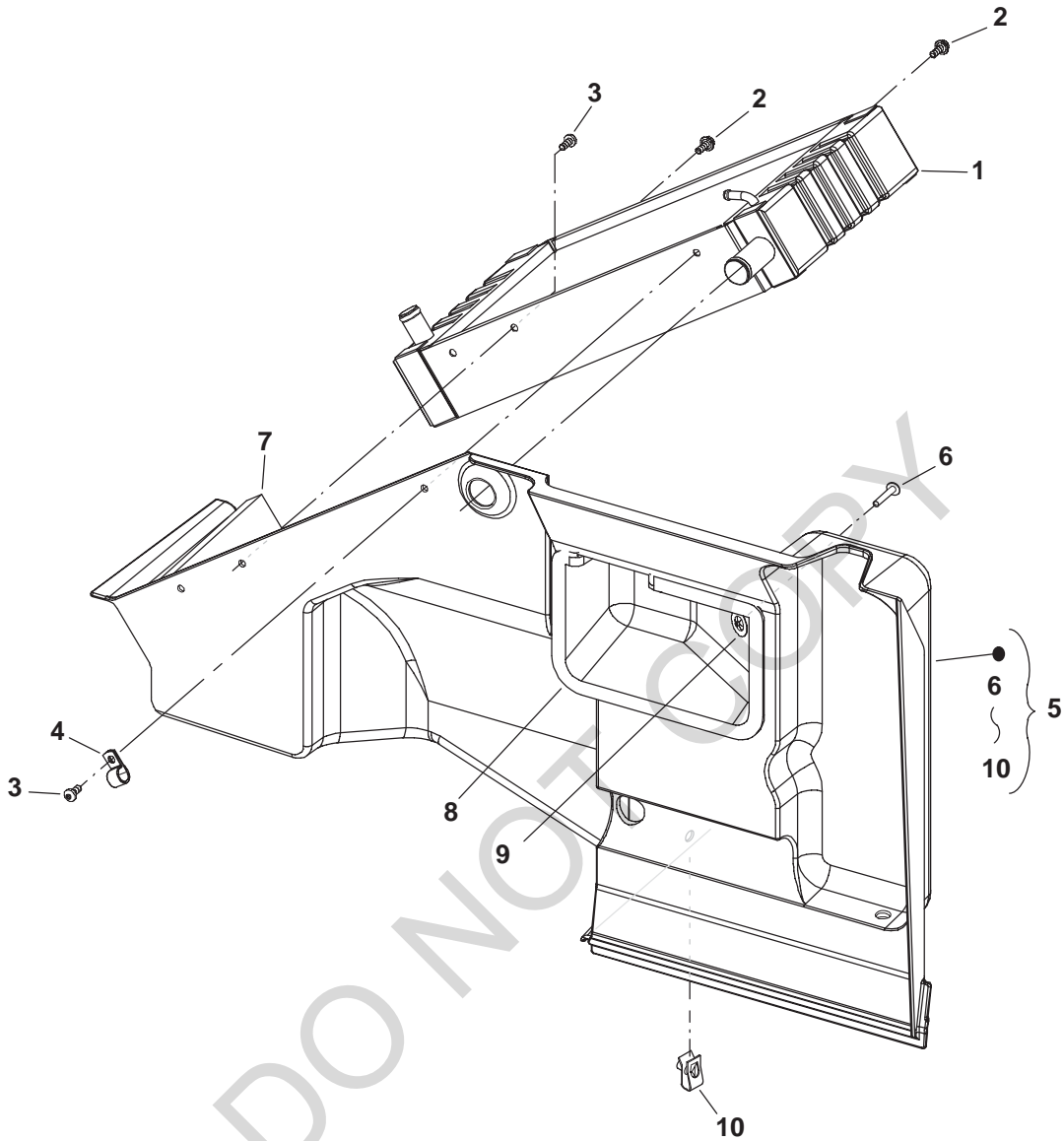


## Cooling System

REF NO.	PART NO.	QTY USED	PART DESCRIPTION	REF NO.	PART NO.	QTY USED	PART DESCRIPTION
1	130-4322	1	Tank, Coolant Recovery	12	503-1959	1	Hose, Air Bleed
2	130-4450-02	1	Cap, Coolant Recovery Tank	13	503-1954	1	Hose, Lower Radiator
3	509-0329	1	O'Ring	14	130-4391	1	Fitting, "T" Hose
4	821-2096-02	3	Screw, Lock Flange (M6 x 1 x 12mm)	15	821-2035	1	Screw, Lock Flange (M6 x 1 x 25mm)
5	130-4320	1	Cap, Coolant Fill	16	130-4392	1	Cap, Drain
6	130-4321	1	Neck, Fill	17	130-4462	1	Seal, Coolant Hose
7	503-1137	8	Clamp, Hose	18	503-1970-02	1	Clamp, Hose Bracket
8	502-0395	1	Barb, Hose	19	870-2054	1	Nut, Lock Flange (M6 x 1)
9	503-1922	1	Hose, Fill Neck	20	503-1921	1	Hose, Lower Engine
10	503-1923	1	Hose, Overflow	21	503-1920	1	Hose, Upper Radiator
11	503-0685	4	Clamp, Hose				

DO NOT COPY

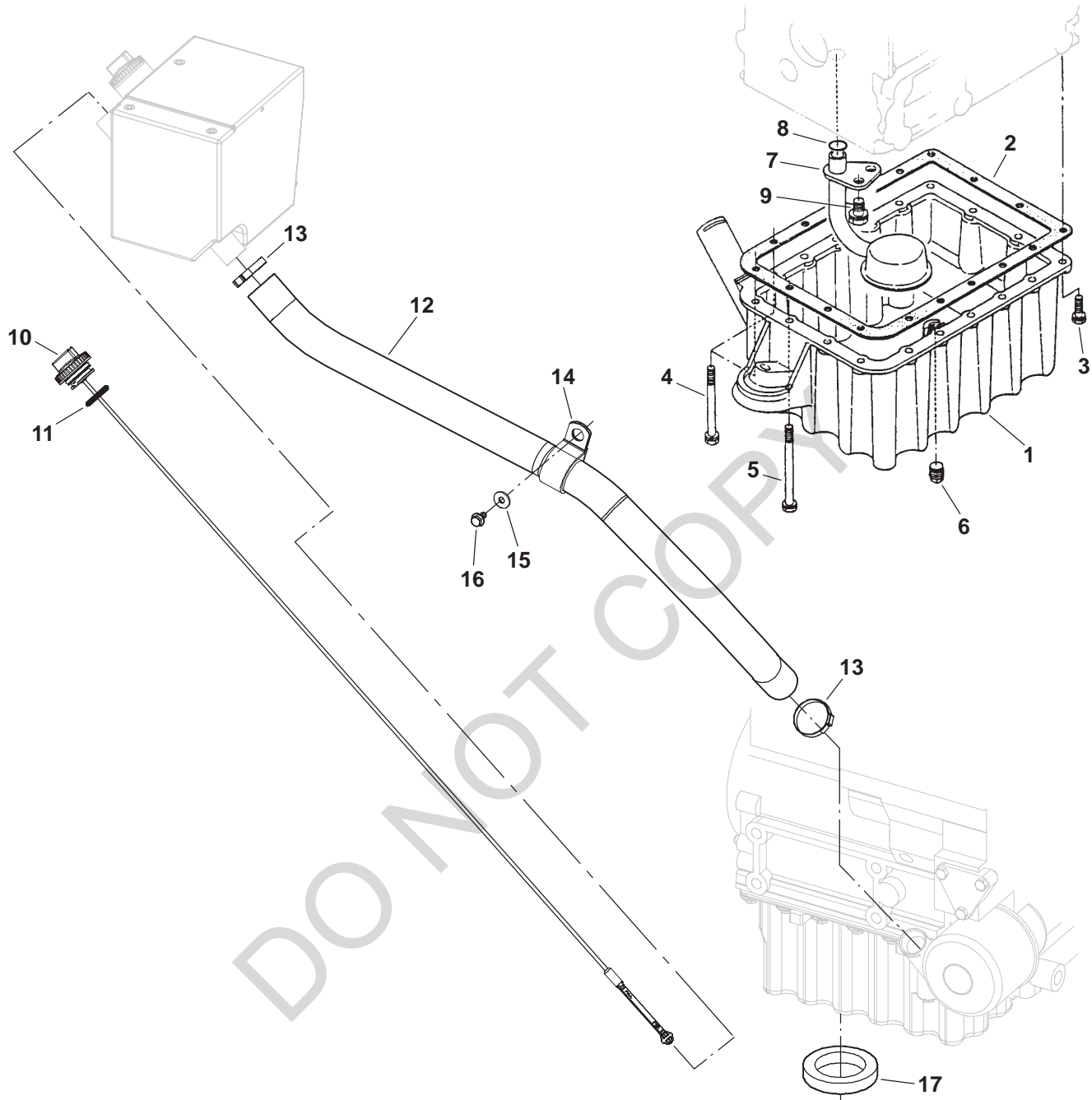
## Radiator Mount



REF NO.	PART NO.	QTY USED	PART DESCRIPTION	REF NO.	PART NO.	QTY USED	PART DESCRIPTION
1	130-4471	1	Radiator	6	818-0226-01	2	*Rivet
2	821-2096-03	2	Screw, Lock Flange (M6 x 1 x 16mm)	7	130-4689	1	*Seal, Radiator Spacer
3	823-0003-05	2	Screw, Pan Head (M6 x 1 x 14mm)	8	405-5308	1	*Insulation, Exhaust Baffle
4	332-1553	1	Clamp, Loop (1")	9	518-0581	2	*Nut, Push-On
5	405-5086	1	Wall Assy, Back (Includes Parts Marked *)	10	870-0542	1	*Nut, Self Retaining

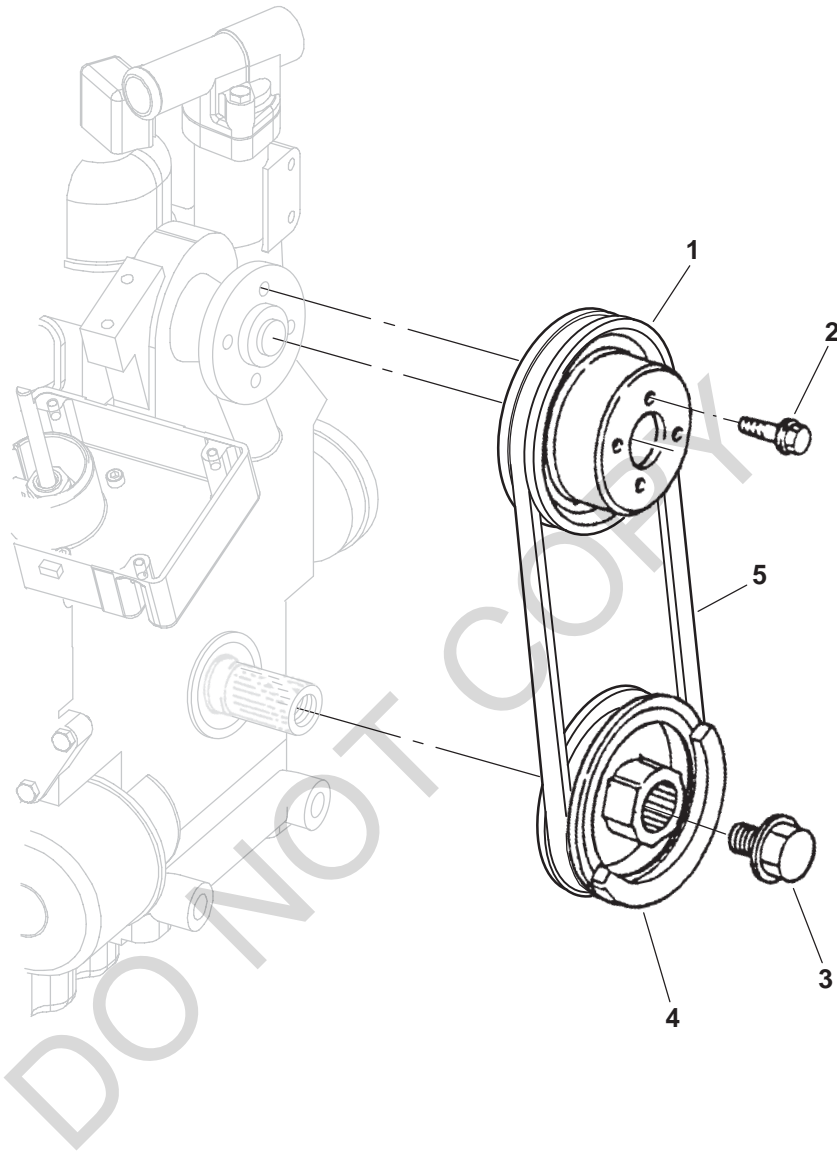
\* - Parts Included in Back Wall Assy.

## Oil Pan



REF NO.	PART NO.	QTY USED	PART DESCRIPTION	REF NO.	PART NO.	QTY USED	PART DESCRIPTION
1	185-6846	1	Pan, Oil	11	509-0329	1	O'Ring
2	185-6818	1	Gasket, Oil Pan	12	123-2120	1	Hose, Oil Fill
3	185-2389	15	Bolt	13	503-1951-46	2	Clamp, Hose
4	185-2396	2	Bolt	14	332-2898	1	Clamp, Loop (1.44")
5	185-2398	1	Bolt	15	526-2083	1	Washer, Flat (M6)
6	502-0153	1	Plug, Oil Drain	16	821-2096-02	1	Screw, Lock Flange (M6 x 1 x 12mm)
7	185-5496	1	Tube, Oil Pickup	17	403-3859	1	Seal, Oil Drain
8	185-3078	1	O'Ring				
9	185-6956	1	Bolt				
10	123-2051	1	Indicator, Oil Level (Includes O'Ring)				

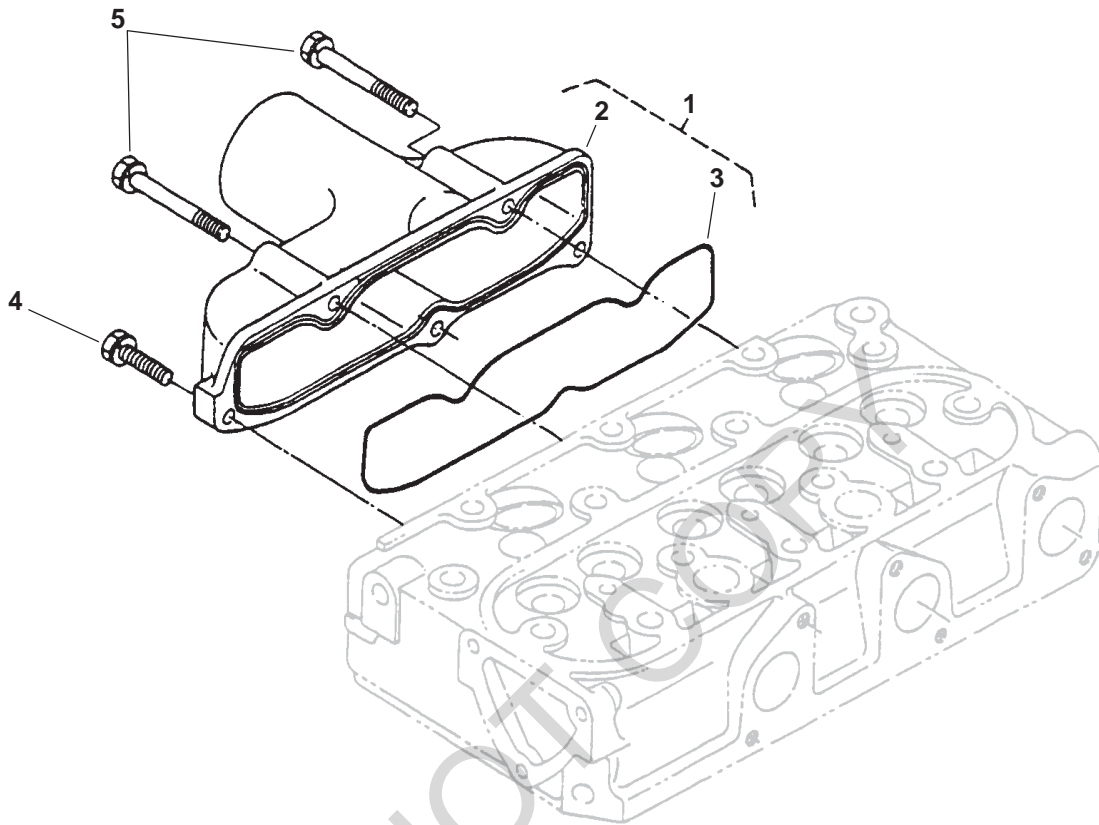
## Pulley



REF NO.	PART NO.	QTY USED	PART DESCRIPTION	REF NO.	PART NO.	QTY USED	PART DESCRIPTION
1	185-5707	1	Pulley, Fan	4	185-7083	1	Pulley, Drive
2	185-2572	4	Screw, Hex Head Flange	5	511-0187	1	Belt, Fan
3	185-5709	1	Screw, Hex Head Cap				



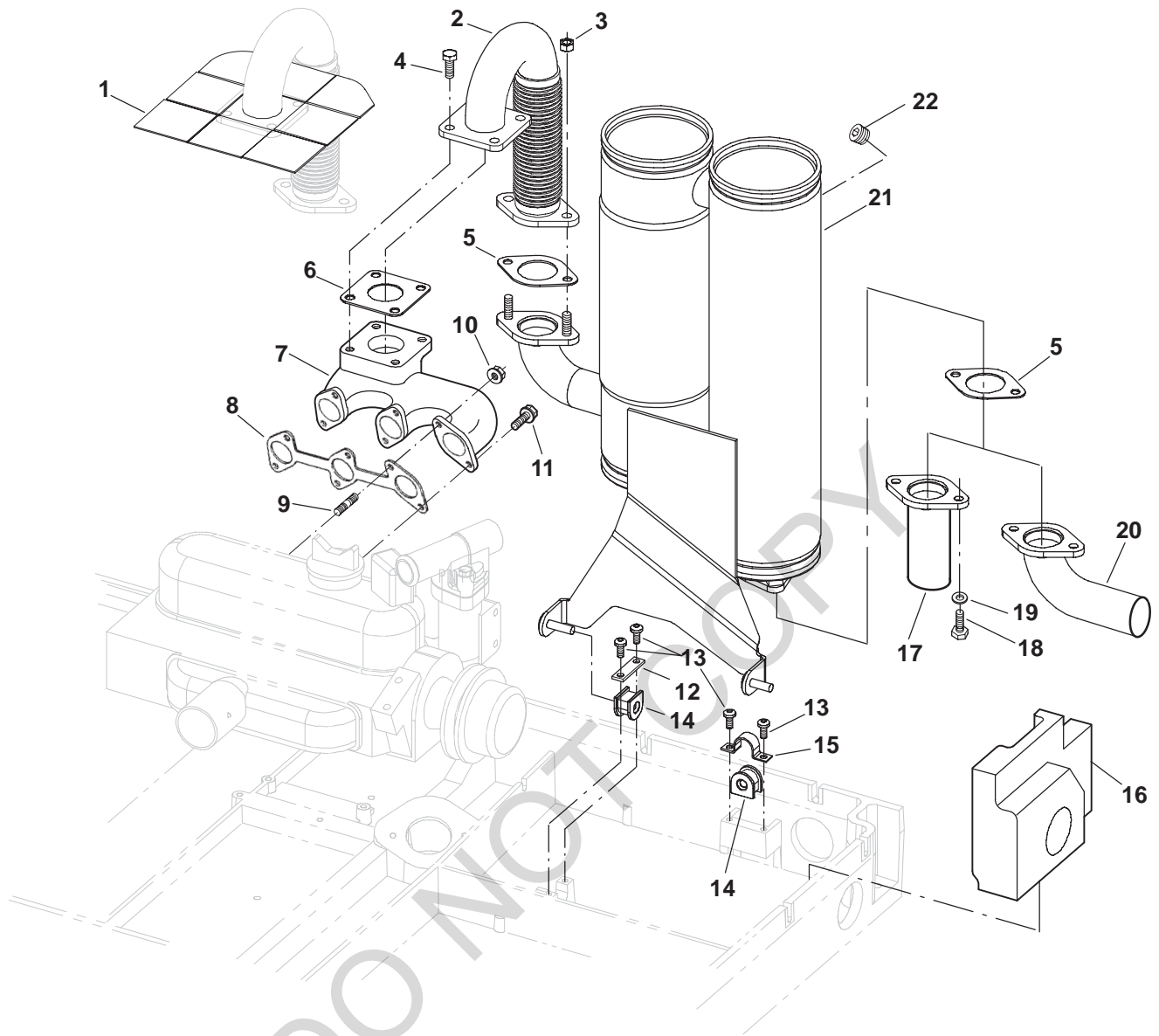
## Inlet Manifold



REF NO.	PART NO.	QTY USED	PART DESCRIPTION	REF NO.	PART NO.	QTY USED	PART DESCRIPTION
1	185-7087	1	Manifold Assy, Inlet (Includes Manifold and Gasket)	3	185-5832	1	Gasket, Manifold
2	185-5831	1	Manifold, Inlet	4	185-2389	2	Bolt
				5	185-5833	3	Bolt

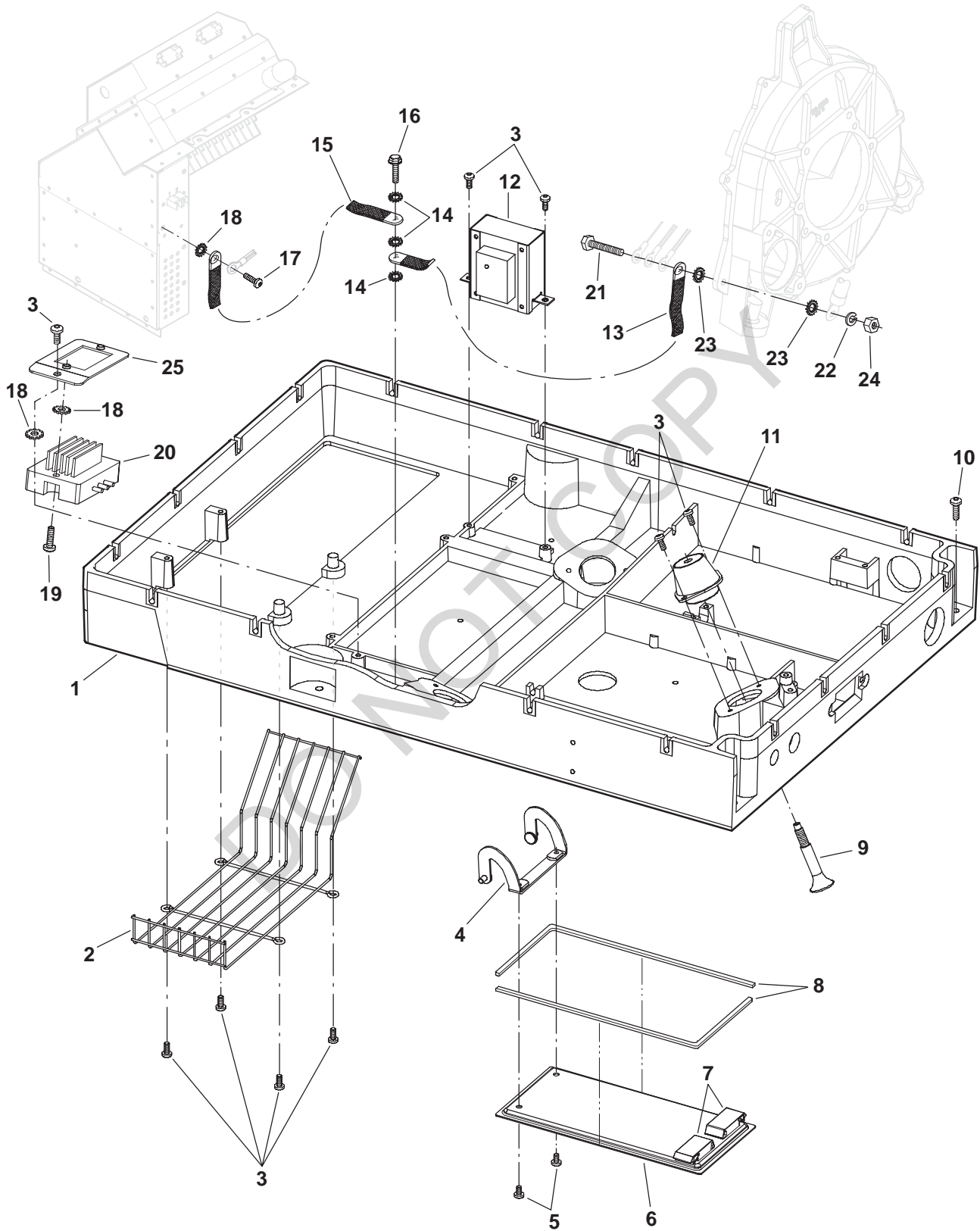
DO NOT COPY

## Exhaust System



REF NO.	PART NO.	QTY USED	PART DESCRIPTION	REF NO.	PART NO.	QTY USED	PART DESCRIPTION
1	895-0297	AR	Seal, Exhaust Pipe	14	402-0687-01	3	Isolator, Muffler
2	154-3018	1	Pipe, Exhaust Flex	15	402-0695-02	1	Clamp, "U" Isolator
3	870-0557	2	Nut, Flange Hex (M8 x 1.25mm)	16	405-5787	1	Block, Fiberglass
4	725-1050	4	Screw, Socket Head Cap (M8 x 20mm)	17	155-2610	1	Tube, Exhaust 3"
5	154-2800	2	Gasket, Exhaust Manifold		155-2424	1	7"
6	185-6853	1	Gasket, Muffler	18	800-0310-21	2	Screw, Hex Head Thread Form (5/16-18 x 1)
7	185-6791	1	Manifold, Exhaust	19	526-0115	2	Washer, Flat (5/16")
8	185-6852	1	Gasket	20	155-2982	1	Elbow, Exhaust
9	185-5829	3	Stud	21	155-3110	1	Muffler, Exhaust
10	185-5536	3	Nut	22	505-0266	1	Plug, Clean-Out
11	185-5534	3	Bolt				
12	402-0688-02	2	Clamp, Flat Isolator				
13	823-0003-05	6	Screw, Pan Head (M6 x 1 x 14mm)				

# Mounting Base



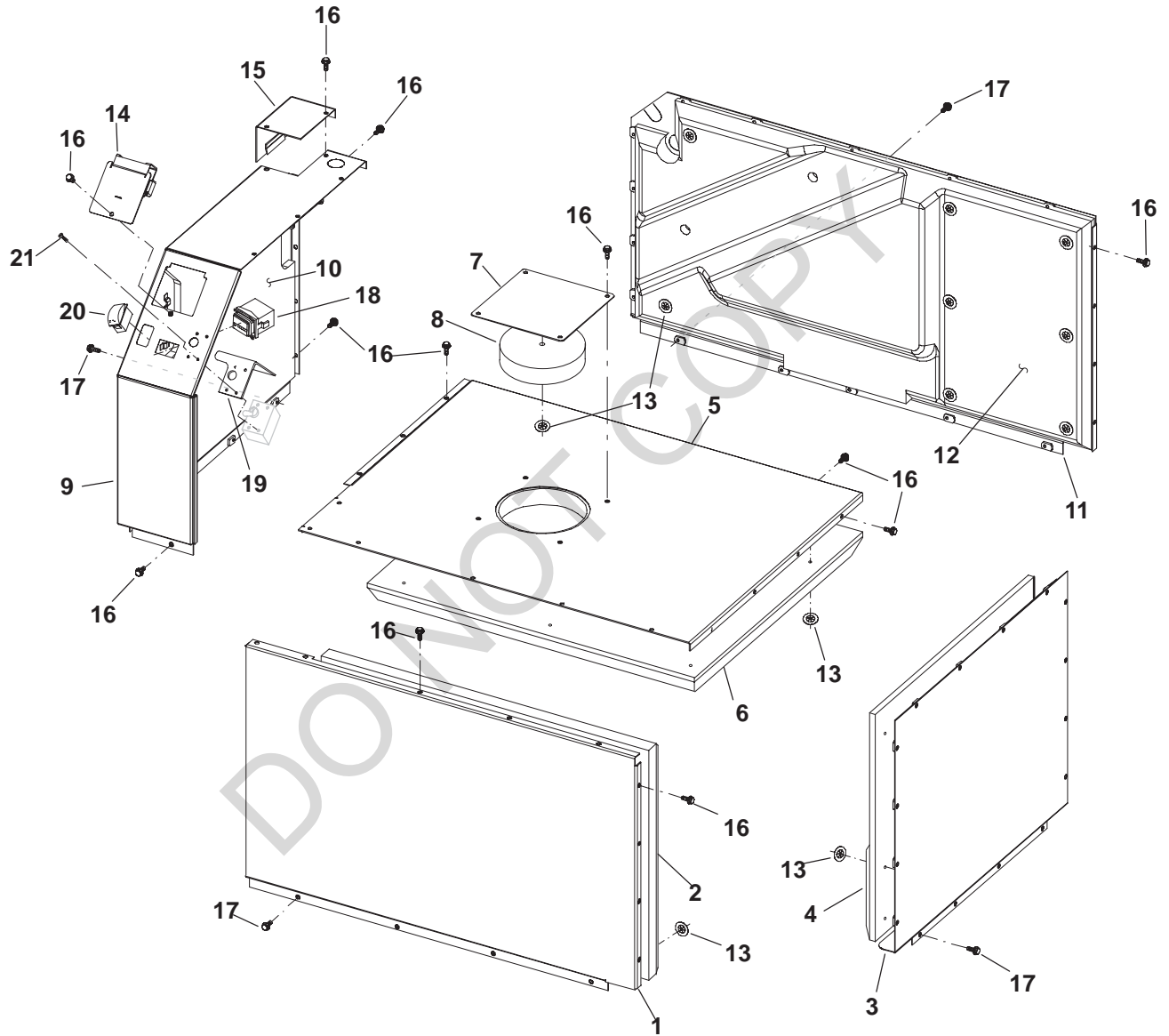
## Mounting Base

REF NO.	PART NO.	QTY USED	PART DESCRIPTION	REF NO.	PART NO.	QTY USED	PART DESCRIPTION
1	403-3847-04	1	Base, Mounting	17	823-1002-04	1	Screw, Pan Head Machine (M6 x 1 x 14mm)
2	130-4655	1	Guard, Fan	18	856-0006	4	Washer, EIT Lock (1/4")
3	823-0003-05	7	Screw, Pan Head (M6 x 1 x 14mm)	19	823-0003-03	8	Screw, Pan Head (M6 x 1 x 20mm)
4	402-0673-02	1	Hinge, Door	20	191-2228	1	Regulator (For Use With Battery Charging Option)
5	823-1002-03	2	Screw, Pan Head (M6 x 1 x 10mm)	21	800-0030	1	*Screw, Hex Head Cap (5/16-18 x 1-1/4)
6	405-5818-S0	1	Door Assy, Maintenance (Includes Latch and Seal)	22	850-2008	1	*Washer, Lock (M8)
7	406-0612	2	Latch, Service Panel	23	856-0008	2	*Washer, EIT Lock (.312)
8	403-3861	2	Seal, Door	24	862-0015	1	*Nut, Hex (5/16-18)
9	815-0861	3	Screw, Isolator Mount	25	305-0952-02	1	Bracket, Voltage Regulator (For Use With Battery Charging Option)
10	815-0908	4	Screw, Thread Forming Hex Washer Head Mounting (3/8-16 x 1.5)				
11	402-0680-01	3	Isolator, Vibration				
12	315-0793	1	Transformer, Battery Charge (For Use With Battery Charging Option)				
13	337-2845	1	Strap, Bond				
14	856-0008	3	Washer, EIT Lock (5/16")				
15	337-2953	1	Strap, Bond				
16	815-0829-05	1	Screw, Hex Washer Head Thread Forming (M8 x 1.25 x 25mm)				

\* - Parts Included with Engine Harness Listed on Engine Harness Page.

DO NOT COPY

# Housing (HDKAJ and HDKAK)



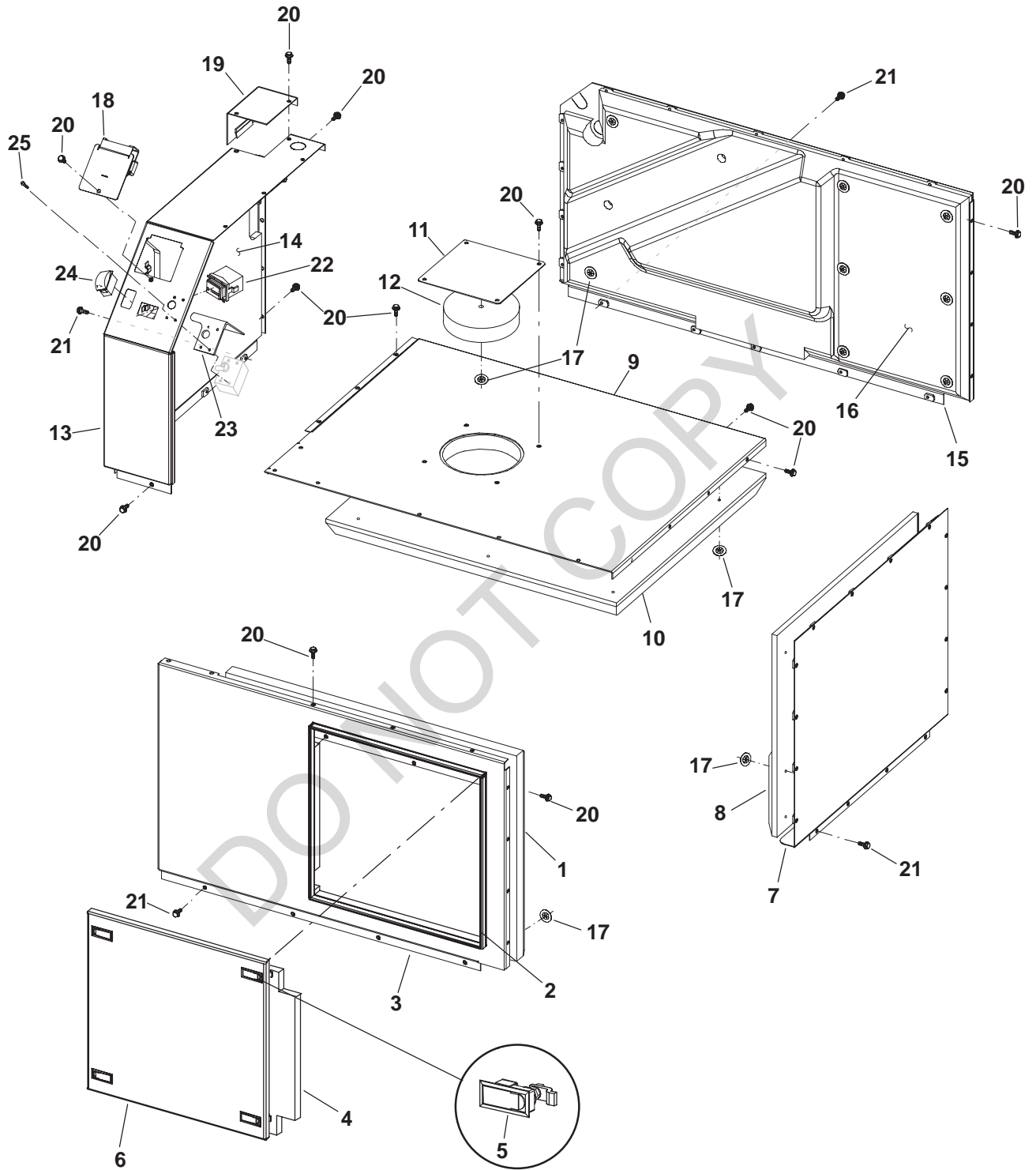
## Housing (HDKAJ and HDKAK)

REF NO.	PART NO.	QTY USED	PART DESCRIPTION	REF NO.	PART NO.	QTY USED	PART DESCRIPTION
	405-5780	1	Kit, Insulation (Includes Parts Marked *)	11	405-5876-03	1	Panel, Rail
1	405-5758-03	1	Panel, Curb	12	405-5779	1	*Insulation, Panel Rail
2	405-5759		*Insulation, Panel Curb	13	518-0581	30	Nut, Push-On
3	405-5082-03	1	Panel, Engine	14	405-5309-03	1	Cover, Radiator Fill Access
4	405-5081	1	*Insulation, Engine Panel	15	405-5380-05	1	Cover, AC Access
5	405-5069-03	1	Panel, Top	16	821-2096-02	34	Screw, Lock Flange (M6 x 1 x 12mm)
6	405-5762	1	*Insulation, Top Panel	17	821-2096-03	18	Screw, Lock Flange (M6 x 1 x 16mm)
7	405-5545-02	1	Cover, Lifting Eye Access	18	302-2002	1	Hourmeter
8	405-5546	1	*Insulation, Access Cover	19	320-1939-02	1	Guard, Circuit Breaker
9			Panel, Cap	20	308-1038	1	Switch, Rocker (Start/Stop) (S1)
	405-5763-06	1	Spec A-E Without Hourmeter	21	815-0550-01	4	Screw, Pan Head (6-32 x 3/8")
	405-5763-07	1	With Hourmeter				
			Begin Spec F				
	405-5874-06	1	Without Hourmeter				
	405-5874-07	1	With Hourmeter				
10			Insulation, Cap				
	405-5757	1	Spec A-C				
	405-5875	1	Begin Spec D				

\* - Parts Included in Insulation Kit

DO NOT COPY

# Housing (HDKAT)



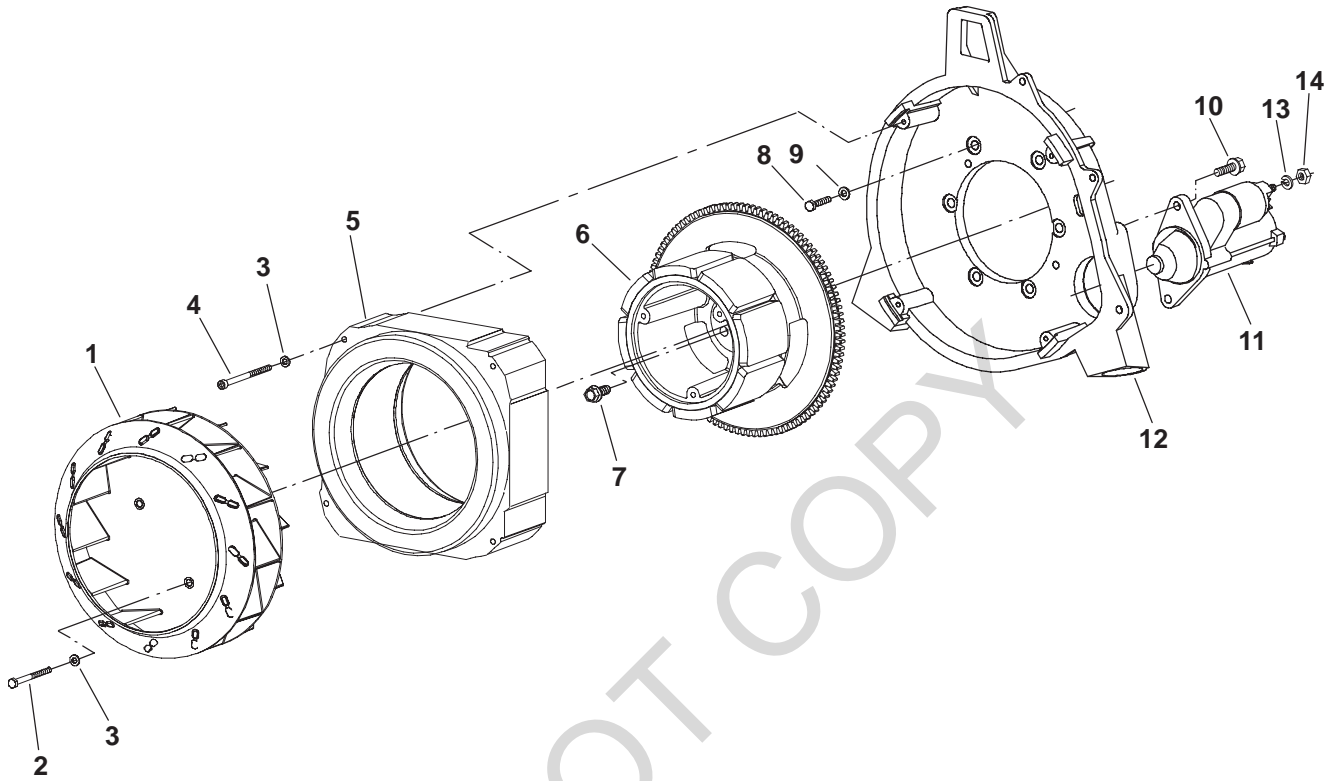


## Housing (HDKAT)

REF NO.	PART NO.	QTY USED	PART DESCRIPTION	REF NO.	PART NO.	QTY USED	PART DESCRIPTION
1	405-5822-01	1	Insulation, Panel Curb	12	405-5546	1	Insulation, Access Cover
2	508-1118	1	Edging, Trim (14-3/4")	13			Panel, Cap
3			Panel, Curb		405-5763-07	1	Spec A-D
	405-5809-04	1	Spec A-D		405-5874-07	1	Spec E
	405-5809-03	1	Begin Spec E	14	405-5875	1	Insulation, Cap
4	405-5822-02	1	Insulation, Door Panel	15			Panel, Rail
5	406-0842	4	Latch, Lift and Turn		405-5876-04	1	Spec A-D
6			Door, Access		405-5876-03	1	Begin Spec E
	405-5810-03	1	Spec A-D	16	405-5779	1	Insulation, Panel Rail
	405-5810-02	1	Begin Spec E	17	518-0581	22	Nut, Push-On
7			Panel, Engine	18	405-5309-03	1	Cover, Radiator Fill Access
	405-5082-04	1	Spec A-D	19	405-5380-05	1	Cover, AC Access
	405-5082-03	1	Begin Spec E	20	821-2096-02	34	Screw, Lock Flange (M6 x 1 x 12mm)
8	405-5081	1	Insulation, Engine Panel	21	821-2096-03	18	Screw, Lock Flange (M6 x 1 x 16mm)
9			Panel, Top				Hourmeter
	405-5069-04	1	Spec A-D	22	302-2002	1	Guard, Circuit Breaker
	405-5069-03	1	Begin Spec E	23	320-1939-02	1	Switch, Rocker (Start/Stop) (S1)
10	405-5762	1	Insulation, Top Panel	24	308-1038	1	Screw, Pan Head W/O Circuit Breaker Boot (6-32 x 3/8")
11			Cover, Lifting Eye Access	25	815-0550	4	
	405-5545-03	1	Spec A-D				
	405-5545-02	1	Begin Spec E				

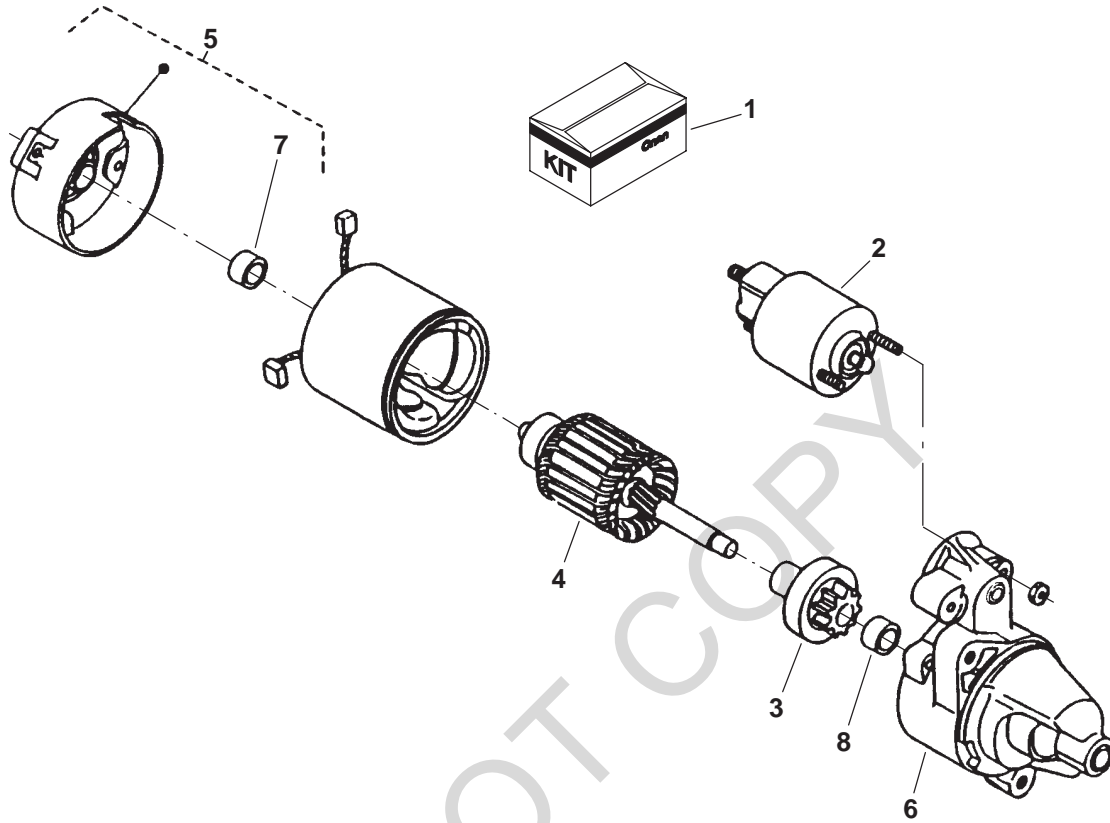
DO NOT COPY

# Generator



REF NO.	PART NO.	QTY USED	PART DESCRIPTION	REF NO.	PART NO.	QTY USED	PART DESCRIPTION
1	205-0232	1	Fan, Generator Spec A-E	7	185-5587	5	Screw, Hex Head Cap
	205-0302	1	Begin Spec F	8	718-1037	6	Screw, Hex Head Cap (M8 X 1.25 X 25mm)
2	800-2044	3	Screw, Hex Head Cap (M6 x 1 x 70mm)	9	526-2100	6	Washer, Flat (M8)
3	526-2080	7	Washer, Flat (M6)	10	815-0781	2	Screw, Hex Washer Head (M8 x 1.25 x 30mm)
4	815-0936	4	Screw, Socket Head Cap (M6 x 1 x 100mm)	11	191-2200	1	Starter (See Separate Page for Components)
5	220-4484-01	1	Stator	12	104-1890	1	Housing, Flywheel
6	201-3540	1	Rotor Assy (Includes Ring Gear) HDKAJ & HDKAK Spec A-G, HDKAT Spec A-D (Magnet Marked with White Strip)	13	850-2008	1	Washer, Lock (M8)
	201-3540-01	1	HDKAJ and HDKAK Begin Spec H, HDKAT Begin Spec E	14	870-0557	1	Nut, Hex (M8 x 1.25)

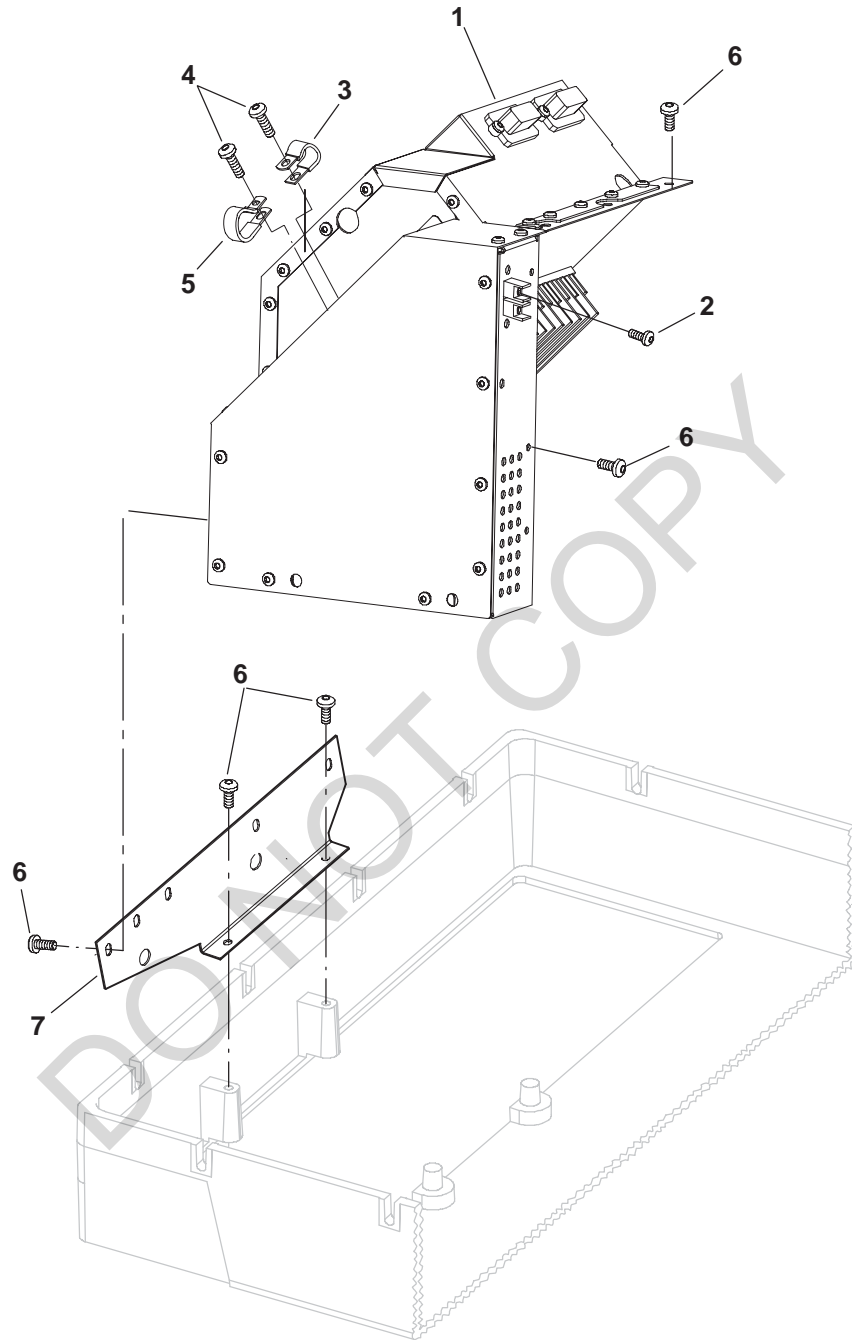
## Starter Components



REF NO.	PART NO.	QTY USED	PART DESCRIPTION
	191-2200	1	Starter
1	191-2215	1	Kit, Starter Brush
2	191-2216	1	Switch
3	191-2217	1	Clutch
4	191-2218	1	Armature

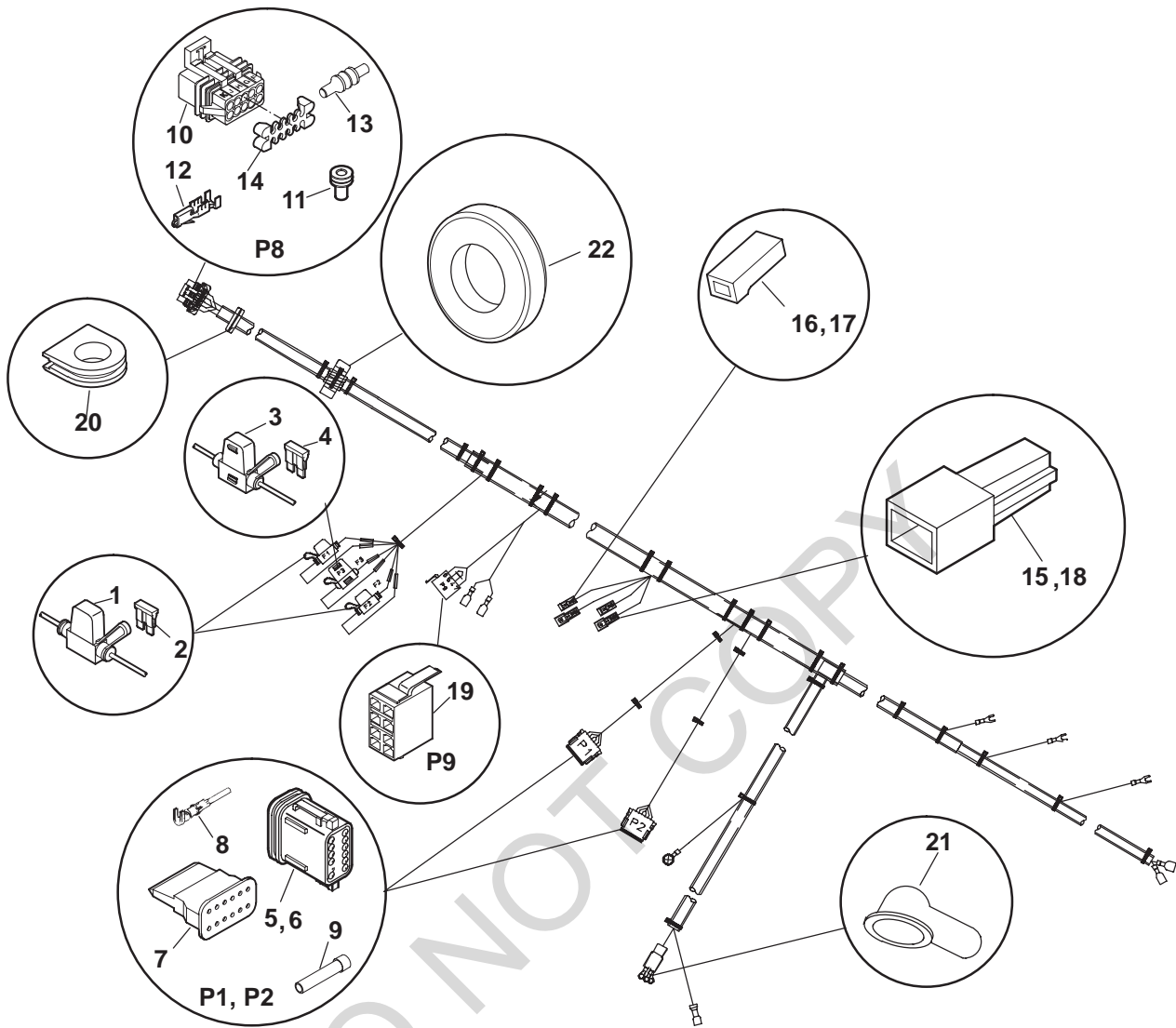
REF NO.	PART NO.	QTY USED	PART DESCRIPTION
5	191-2219	1	Frame, Commutator End
6	191-2220	1	Housing
7	191-2221	1	Bearing, Commutator End
8	191-2222	1	Bearing, Pinion End

## Inverter Mount



REF NO.	PART NO.	QTY USED	PART DESCRIPTION	REF NO.	PART NO.	QTY USED	PART DESCRIPTION
1			Inverter	3	518-0515	1	Clip, Loop
	300-4800-96	1	HDKAJ, HDKAK (Spec A-E)	4	823-1002-04	2	Screw, Pan Head Machine (M6 x 1 x 14mm)
	300-5295-96	1	HDKAJ, HDKAK (Begin Spec F) HDKAT (Begin Spec B)	5	332-1553	1	Clamp, Loop (1")
				6	823-0003-05	11	Screw, Pan Head (M6 x 1 x 14mm)
2	815-0896-03	2	Screw, Pan Head Torx (8-32 x 3/8")	7	319-3033-02	1	Bracket, Inverter

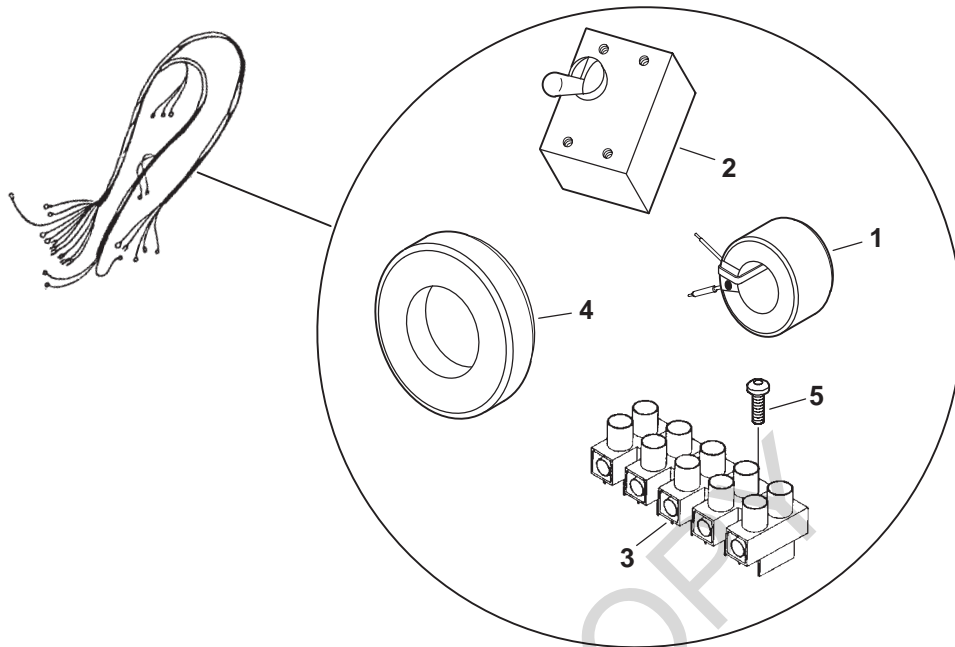
## Engine Harness



REF NO.	PART NO.	QTY USED	PART DESCRIPTION	REF NO.	PART NO.	QTY USED	PART DESCRIPTION
			*Harness, Engine HDKAJ, HDKAK	15	332-2298	1	Housing, Tab Terminal (A1-J6)
	338-3416	1	Spec A-E	16	332-0819	1	Housing, Receptacle Terminal (Natural) (A1-J7)
	338-3822	1	Begin Spec F HDKAT	17	332-0819-02	1	Housing, Receptacle Terminal (Red) (A1-J5)
	338-3416	1	Spec A	18	332-2298-01	1	Housing, Tab Terminal (Black) (A1-J8)
	338-3822	1	Begin Spec B	19	308-1019	1	Connector, Switch (P9)
1	321-0322	2	Holder, Fuse (1-1/2") (F1, F2)	20	508-1105	1	Grommet
2	321-0321-07	2	Fuse, Blue Blade (F1, F2) (15A)	21	332-2112	1	Insulator, Terminal
3	321-0349	1	Holder, Fuse (1") (F3)	22			Core
4	321-0307-08	1	Fuse, Natural Blade (F3) (25A)		315-0770	4	Spec A-E (Ferrite)
5	323-1582	1	Connector, Plug (12 Pin) (P1)		315-0821	1	Begin Spec F (Tape Wound)
6	323-1582-02	1	Connector, Plug (12 Pin) (P2)		315-0821	1	HDKAT (Tape Wound)
7	323-1583	2	Wedge, Plug (12 Pin) (P1, P2)				
8	323-1492	20	Terminal, Socket (P1, P2)				
9	323-1591	4	Seal, Plug (P1, P2)				
10	323-1711	1	Connector, Plug (10 Pin) (P8)				
11	323-1708	9	Seal, Cable (P8)				
12	323-1709	9	Terminal, Socket (P8)				
13	323-1712	1	Plug, Cavity (P8)				
14	323-1719	1	Lock, Housing (P8)				

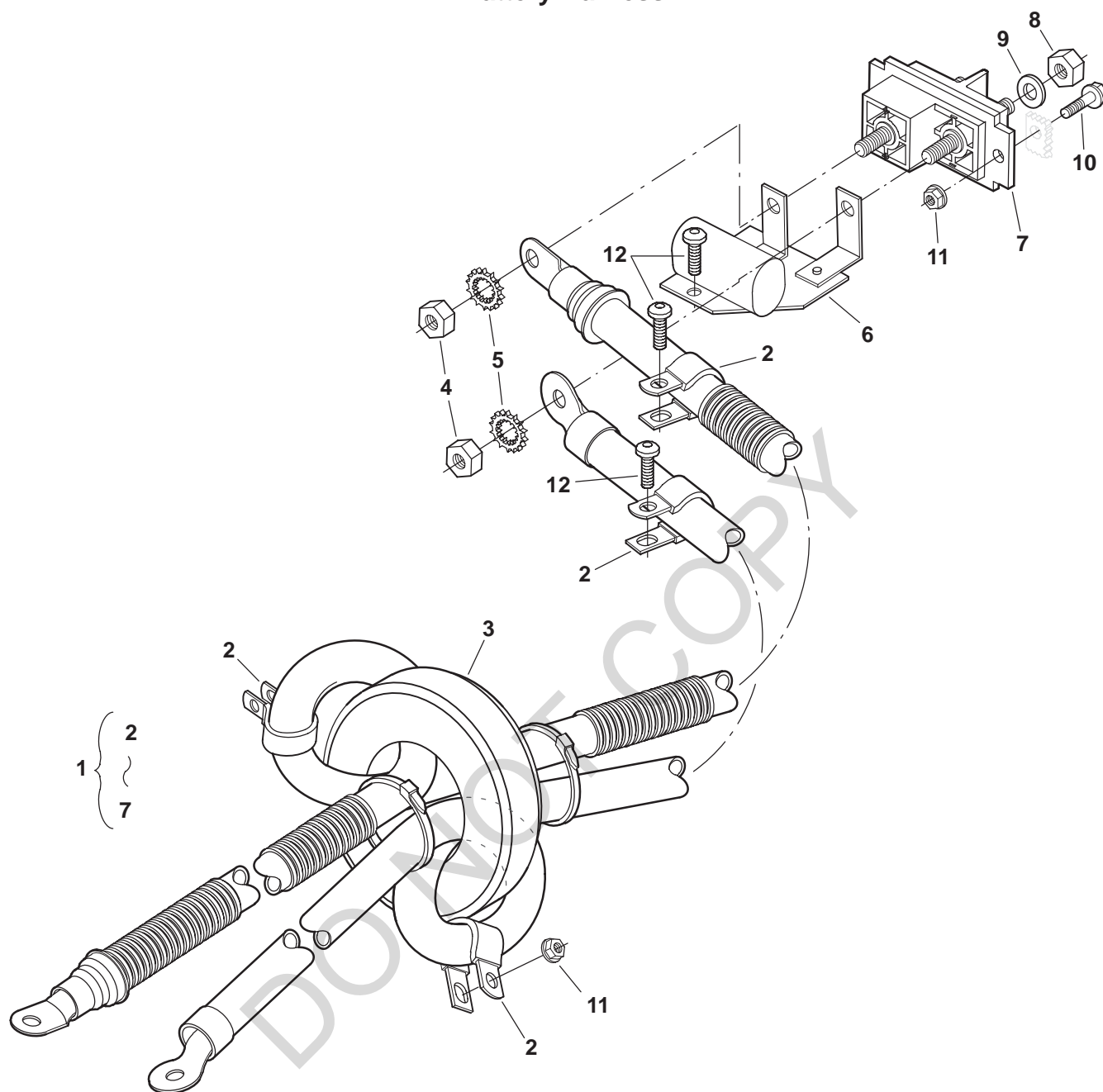
\* - See Also the Mounting Base Page for Hardware Included with this Harness.

## AC Harness



REF NO.	PART NO.	QTY USED	PART DESCRIPTION	REF NO.	PART NO.	QTY USED	PART DESCRIPTION
			Harness, AC Wiring HDKAJ, HDKAK	3			Block, AC Terminal HDKAJ, HDKAK
			Spec A-C		332-3384	1	Spec A-C
338-3418		1	W/Battery Charger		332-3531-04	1	Begin Spec D
			W/O Battery Charger		332-3531-04	1	HDKAT
338-3417		1	All Specs Except 11502	4			Core, Ferrite
338-3417-03		1	Spec 11502 Only				HDKAJ, HDKAK
			Spec D-E		315-0770	4	Spec A-E
338-3588-01		1	W/Battery Charger		315-0821	1	Begin Spec F
			W/O Battery Charger				HDKAT
338-3587-01		1	All Specs Except 11502		315-0770	4	Spec A
			Spec 11502 Only		315-0821	1	Begin Spec B
338-3587-04		1	Begin Spec F	5			Screw
338-3823-01		1	W/Battery Charger		823-0002-08	2	HDKAJ, HDKAK
			W/O Battery Charger				Spec A-C, Pan Head Torx (M4 x .7 x 25mm)
338-3824-01		1	All Specs Except 11502		812-0070	2	Begin Spec D, Round Head Machine (6-32 x 1-1/4")
338-3824-04		1	Spec 11502 Only				HDKAT, Round Head Machine (6-32 x 1-1/4")
			HDKAT		812-0070	2	
338-3588-01		1	Spec A				
338-3823-01		1	Begin Spec B				
1	315-0760	1	Transformer				
2			Breaker, Circuit				
	320-1875-01	1	35A (All Specs Except 11502)				
	320-1875-04	1	30A (Spec 11502 Only)				

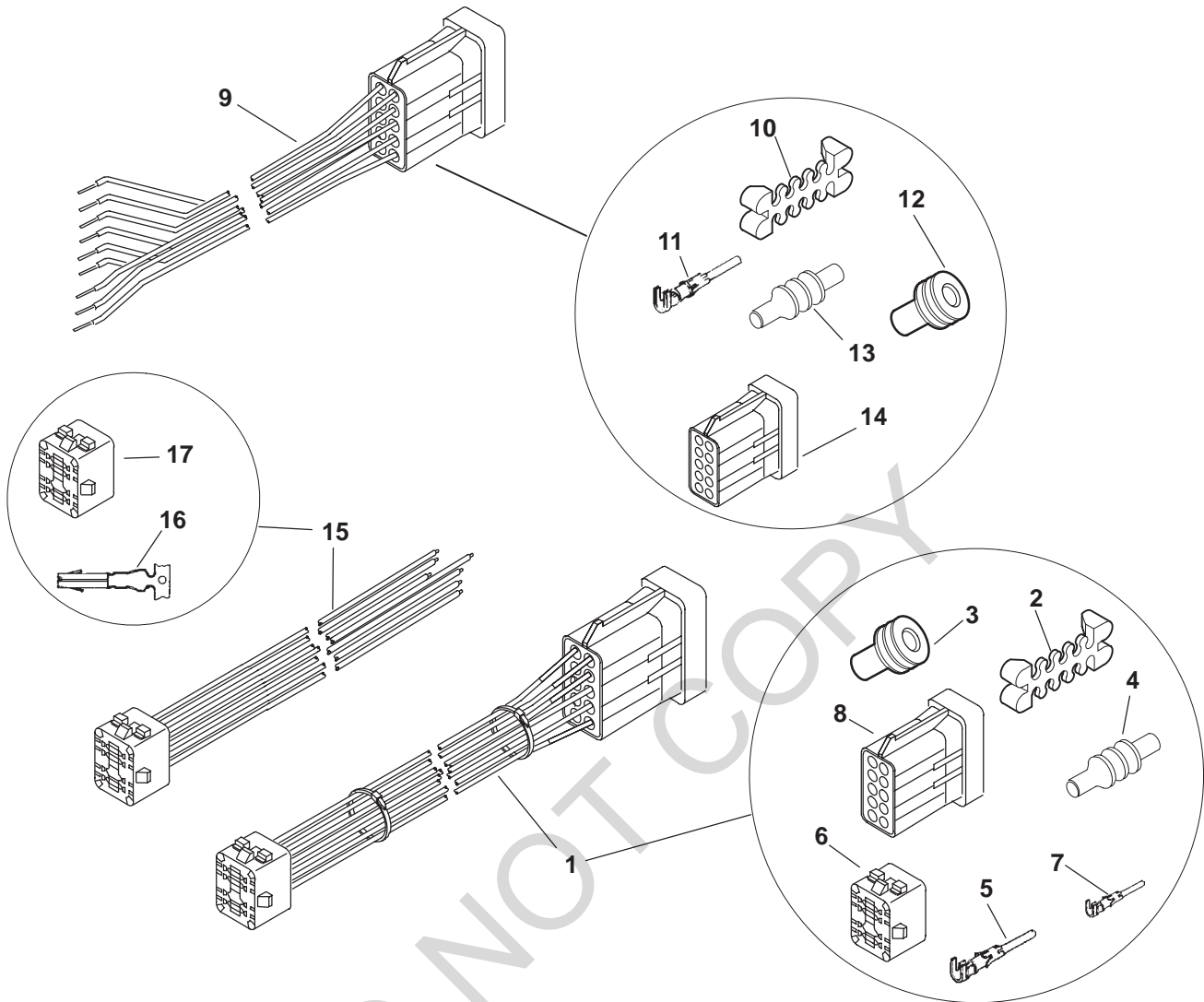
## Battery Harness



REF NO.	PART NO.	QTY USED	PART DESCRIPTION	REF NO.	PART NO.	QTY USED	PART DESCRIPTION
1			Harness, Battery (Includes Parts Marked *) HDKAJ, HDKAK	5	856-0008	2	*Washer, EIT Lock (5/16")
	338-3422	1	Spec A-E	6	300-4884	1	*PCB Assy, Filter DC
	338-3841	1	Begin Spec F	7	332-3408	1	*Block, Terminal
			HDKAT	8	871-0025	2	Nut, Hex Brass (5/16-18)
	338-3422	1	Spec A	9	526-0054	2	Washer, Flat (5/16")
	338-3841	1	Begin Spec B	10	821-2096-03	2	Screw, Lock Flange (M6 x 1 x 20mm)
2	332-1554	4	*Clamp, Insulated Loop	11	870-2054	3	Nut, Lock Flange (M6 x 1)
3	315-0770	1	*Core, Ferrite (Not Included with HDKAJ, HDKAK Harness Beginning Spec F or HDKAT Harness Beginning Spec B)	12	823-0003-05	3	Screw, Pan Head (M6 x 1 x 14mm)
4	862-0015	2	*Nut, Hex (5/16-18)				

\* - Parts Included in Battery Harness.

## Harnesses



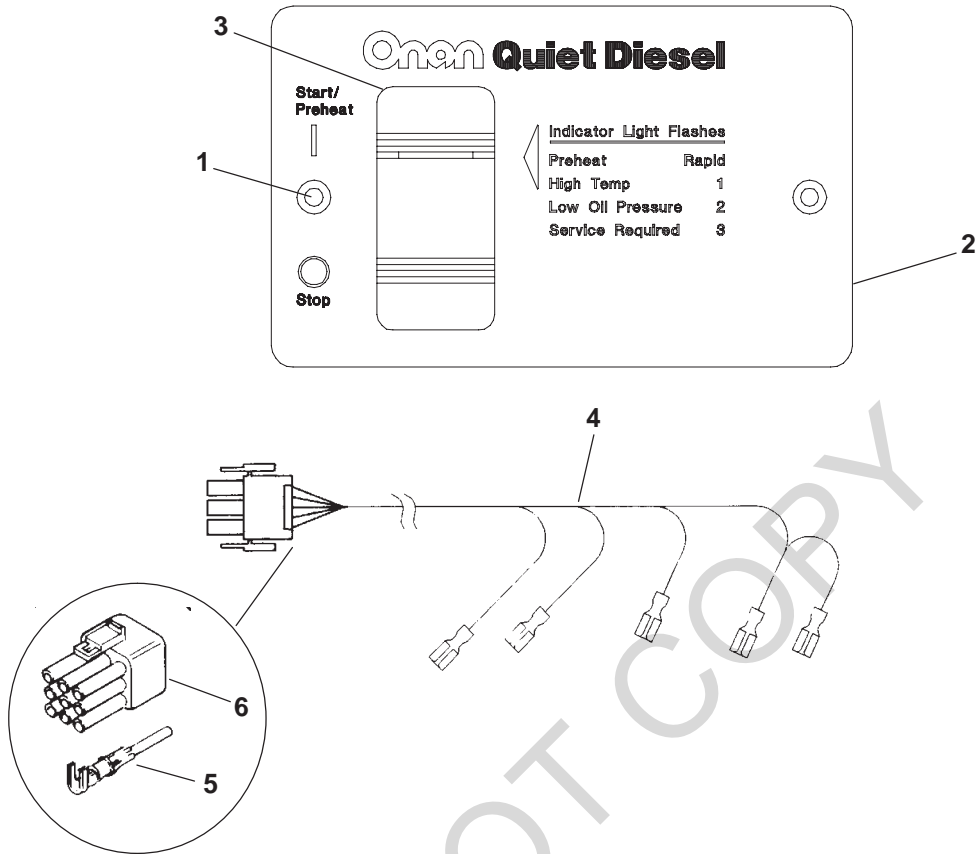
REF NO.	PART NO.	QTY USED	PART DESCRIPTION	REF NO.	PART NO.	QTY USED	PART DESCRIPTION
1			Harness, Extension (Reaches From DC Control Harness to Remote Panel) (Includes Parts Marked +)	10	323-1719	1	°Housing, Lock
	338-3490-01	1	10 Feet	11	323-1707	8	°Pin, Contact
	338-3490-02	1	30 Feet	12	323-1708	8	°Seal, Cable
2	323-1719	1	+Housing, Lock	13	323-1712	2	°Plug, Cavity
3	323-1708	8	+Seal, Cable	14	323-1710	1	°Connector, Receptacle (10 Pin)
4	323-1712	2	+Plug, Cavity	15	338-3573	1	Harness, Customer Interface Pigtail 6" (Reaches From Remote Panel to Customer Interface) (Includes Sockets and Cap)
5	323-1200	AR	+Socket, Contact				
6	323-1325	1	+Cap, Connector	16	323-1200	8	Socket, Contact
7	323-1707	AR	+Pin, Contact	17	323-1325	1	Cap, Connector
8	323-1710	1	+Connector, Receptacle (10 Pin)				
9	300-4947	1	Harness, Remote Connector (Customer Interface Pigtail 6") (Reaches From DC Control Harness to Customer Interface) (Includes Parts Marked °)				

+ - Parts Included in Extension Harness.

° - Parts Included in Remote Connector Harness.

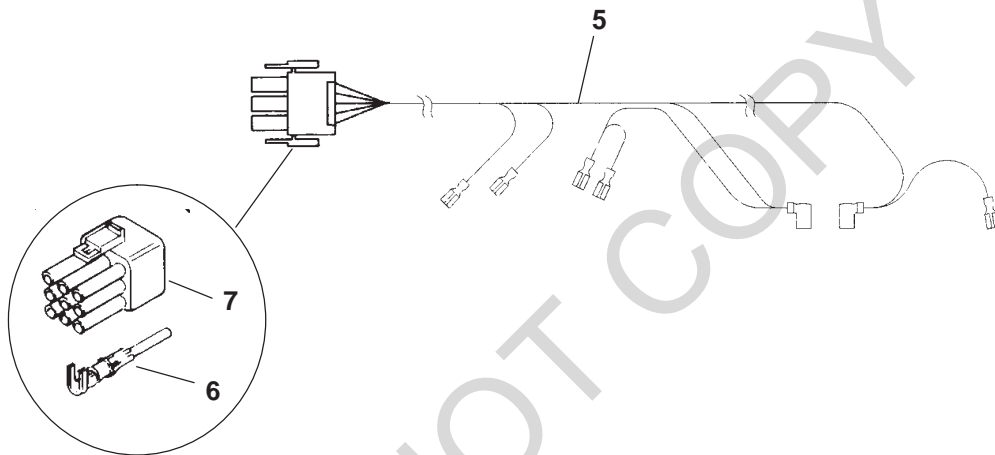
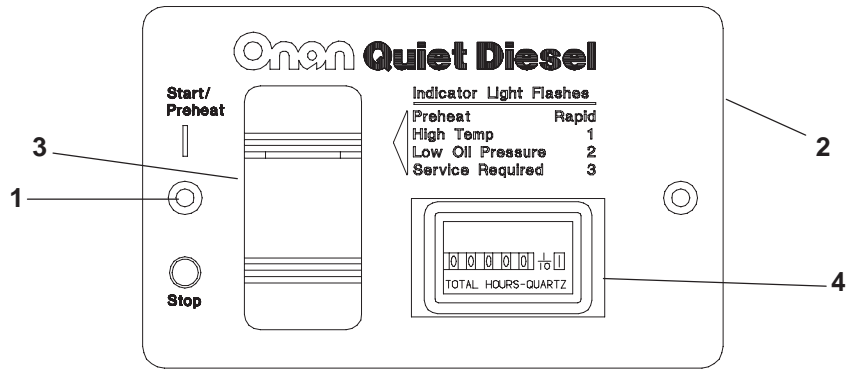


## Remote Switch Panel



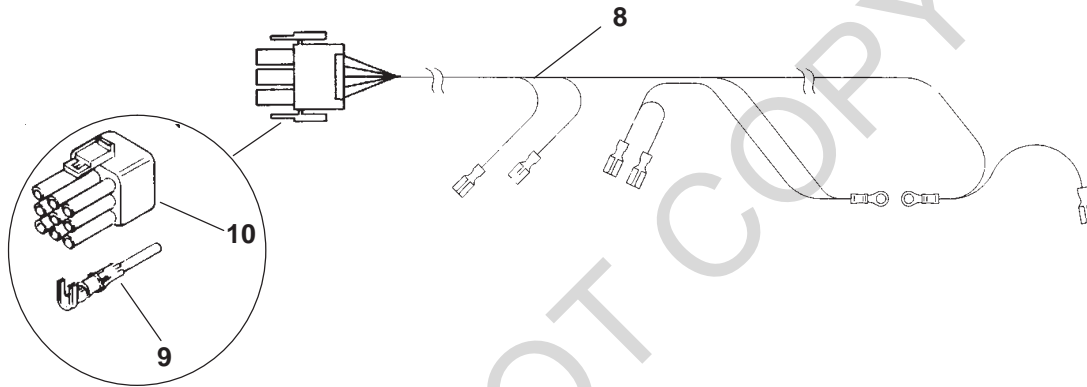
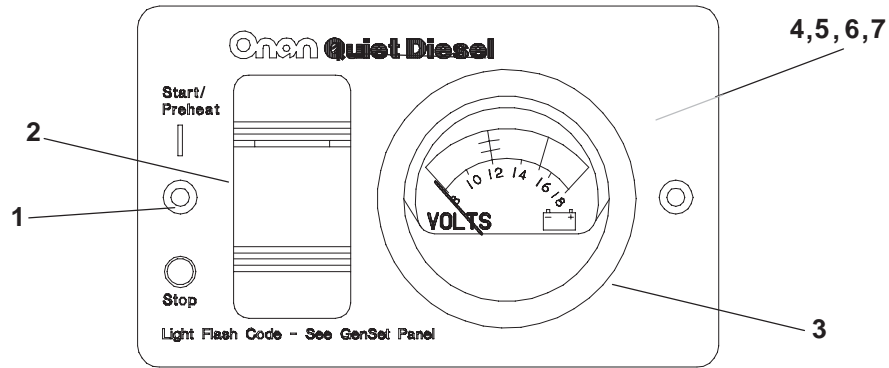
REF NO.	PART NO.	QTY USED	PART DESCRIPTION	REF NO.	PART NO.	QTY USED	PART DESCRIPTION
	300-4942	1	Kit, Remote Switch Panel	4	338-3512	1	Harness, Remote Panel (Includes Pins and Plug)
1	815-0910	2	Screw, Wood Mounting (#6 x 1)	5	323-1199	4	Pin, Contact
2	319-2340-01	1	Panel, Printed	6	323-1291	1	Plug (9 Pin)
3	308-1062	1	Switch, Rocker				

## Remote Switch/Hourmeter Panel



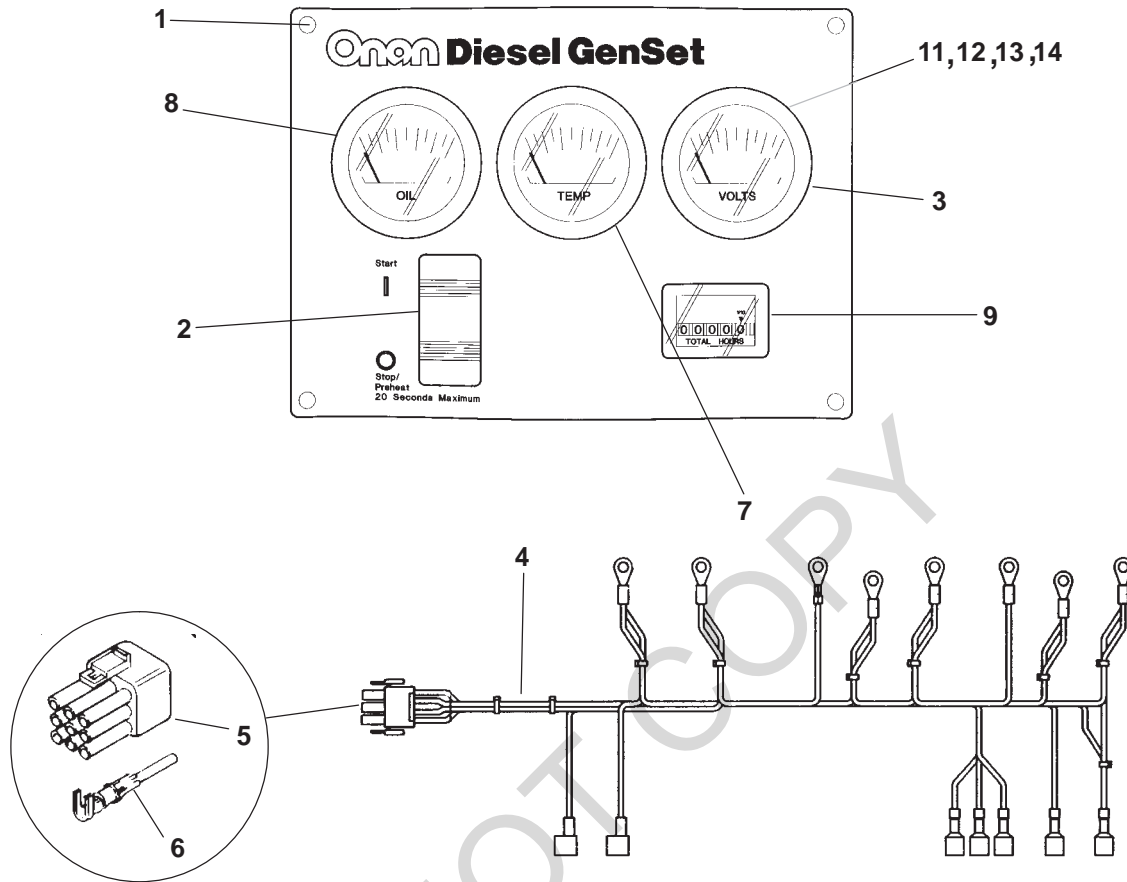
REF NO.	PART NO.	QTY USED	PART DESCRIPTION	REF NO.	PART NO.	QTY USED	PART DESCRIPTION
	300-4943	1	Kit, Switch/Hourmeter Remote Panel	4	302-2002	1	Hourmeter
1	815-0910	2	Screw, Wood Mounting (#6 x 1)	5	338-3475	1	Harness, Remote Panel (Includes Pins and Plug)
2	319-2340-02	1	Panel, Printed	6	323-1199	4	Pin, Contact
3	308-1062	1	Switch, Rocker	7	323-1291	1	Plug (9 Pin)

## Remote Switch/Voltmeter Panel



REF NO.	PART NO.	QTY USED	PART DESCRIPTION	REF NO.	PART NO.	QTY USED	PART DESCRIPTION
	300-4944	1	Kit, Remote Switch/Voltmeter Panel	6	871-0010	4	Nut, Hex Brass Machine (#10-32)
1	815-0910	2	Screw, Wood Mounting (#6 x 1)	7	850-0030	2	Washer, Lock (#10)
2	308-1062	1	Switch, Rocker	8	338-3509	1	Harness, Remote Panel (Includes Pins and Plug)
3	302-1641	1	Meter, Voltage	9	323-1199	4	Pin, Contact
4	526-0409	2	Washer, Nylon (3/16")	10	323-1291	1	Plug (9 Pin)
5	526-0049	4	Washer, Flat (#10)				

## Remote Gauge Panel



REF NO.	PART NO.	QTY USED	PART DESCRIPTION	REF NO.	PART NO.	QTY USED	PART DESCRIPTION
	300-5027	1	Kit, Remote Gauge Panel	6	323-1199	8	Pin, Contact
1	808-0023	4	Screw, Pan Head Sheet Metal Mounting (#8 x 1/2")	7	193-0351	1	Gauge, Water Temperature
2	308-1062	1	Switch, Rocker (SPDT)	8	193-0352	1	Gauge, Oil Pressure
3	302-1641	1	Meter, Voltage	9	302-2002	1	Hourmeter
4	338-3637	1	Harness, Remote Panel (Includes Plug and Pins)	11	526-0409	8	Washer, Nylon (3/16")
5	323-1291	1	Plug (9 Pin)	12	526-0049	16	Washer, Flat (#10)
				13	871-0010	16	Nut, Hex Brass Machine (#10-32)
				14	850-0030	8	Washer, Lock (#10)

## Labels

REF NO.	PART NO.	QTY USED	PART DESCRIPTION	REF NO.	PART NO.	QTY USED	PART DESCRIPTION
98-7485-07		1	Label, Blank Wiring Harness	541-0531		1	Kit, Commercial Remote Air Cleaner (Includes Parts Marked +)
98-7125-01		1	Label, Control Panel (2 Pole, W/Hourmeter)	140-3050		1	+Air Cleaner Assy (Includes Element and Cover)
98-7125-05		1	35A	140-3071		1	+Element, Air Cleaner
98-7368		1	30A	140-3072		1	+Cover, Air Cleaner
			Label, GenVerter	718-1035		4	+Screw, Hex Head Cap (M8 x 16mm)
			Label, Model Ident	870-2055		2	+Nut, Lock Flange
98-6876-01		1	7.5 kW	503-2030		2	+Hose, Air Cleaner
98-6876-02		1	8.0 kW	140-3065		1	+Tube, Adapter
98-7369		2	Commercial, 7.5 kW	140-3098		1	+Sleeve, Air Intake
98-6780-01		1	Label, Remote Panel/Switch	503-1895-07		1	+Hose, Air Cleaner
98-6780-02		1	Label, Remote Panel/ Hourmeter	503-1895-08		1	+Hose, Air Cleaner
98-7351-03		1	Label, Remote Panel/Voltmeter	503-0429		4	+Clamp, Hose
98-7466		1	Label, Rear Control (M14, M13, M12, GND)	503-1774		1	+Clamp, "J" Support
98-7465-03		1	Label, Control Face (Onan Quiet Diesel)	403-2213		1	+Spacer, Mounting Pad
				800-0055-01		1	+Screw, Hex Head Cap
				508-0051		1	+Grommet
98-7244		1	Package, Label (Includes Parts Marked *)	821-2096-04		2	+Screw, Lock Flange (M6 x 1 x 20mm)
98-7196		1	*Label, Cool/Oil Fill	850-2008		2	+Washer, Lock (M8)
98-6877		1	*Label, Coolant Level	140-3099-02		1	+Bracket, Air Cleaner
98-6878		1	*Label, Fuel Attachment	140-3100-02		2	+Shim, Bracket
98-6476		1	*Label, Ground	526-2080		2	+Washer, Flat (M6)
98-7482		1	*Label, Hose Kit				
98-7197		1	*Label, Patent	541-0530		1	Kit, Aux Commercial Fuel Pump (Includes Parts Marked #)
98-7199		1	*Label, Service Info				
98-7127		1	*Label, Warning (Hazardous Voltage)	149-2547		1	#Pump, Aux Fuel
				338-3580		1	#Harness, Fuel Pump
98-7130		1	*Label, Warning (Overheat)	332-2947		2	#Connector, Splice
98-7128		2	*Label, Warning (Voltage/ Rotating Parts/Operation Service Risk)	323-1608		1	#Housing, Connector
				323-1607		2	#Contact, Socket
				323-1576		2	#Seal, Cable
98-7131		1	*Label, Warning (Voltage/ Rotating Fan)				
98-7497-02		1	Label, Warning Install				

\* - Parts Included in Label Package.

+ - Parts Included in Commercial Remote Air Cleaner Kit.

# - Parts Included in Aux Commercial Fuel Pump Kit.

## Numerical Index

<u>Part No.</u>	<u>Page</u>	<u>Part No.</u>	<u>Page</u>	<u>Part No.</u>	<u>Page</u>	<u>Part No.</u>	<u>Page</u>
098-6476,	<b>51</b>	130-4689,	<b>28</b>	185-2028,	<b>7</b>	185-2559,	<b>9, 22</b>
098-6780-01,	<b>51</b>	134-5063-S0,	<b>25</b>	185-2029,	<b>7</b>	185-2572,	<b>30</b>
098-6780-02,	<b>51</b>	134-5126,	<b>25</b>	185-2030,	<b>7</b>	185-3078,	<b>29</b>
098-6876-01,	<b>51</b>	140-2536-05,	<b>25</b>	185-2031,	<b>7</b>	185-4255,	<b>18, 21</b>
098-6876-02,	<b>51</b>	140-2897,	<b>25</b>	185-2033,	<b>7</b>	185-5337,	<b>16</b>
098-6877,	<b>51</b>	140-2898,	<b>25</b>	185-2094,	<b>6</b>	185-5348,	<b>18</b>
098-6878,	<b>51</b>	140-2956,	<b>25</b>	185-2095,	<b>6, 15</b>	185-5350,	<b>7</b>
098-7125-01,	<b>51</b>	140-2961-02,	<b>25</b>	185-2105,	<b>21</b>	185-5351,	<b>7</b>
098-7125-05,	<b>51</b>	140-3050,	<b>51</b>	185-2115,	<b>6</b>	185-5357,	<b>7</b>
098-7127,	<b>51</b>	140-3065,	<b>51</b>	185-2124,	<b>21</b>	185-5358,	<b>7</b>
098-7128,	<b>51</b>	140-3071,	<b>51</b>	185-2163,	<b>13</b>	185-5360,	<b>7</b>
098-7130,	<b>51</b>	140-3072,	<b>51</b>	185-2173,	<b>10</b>	185-5361,	<b>7</b>
098-7131,	<b>51</b>	140-3098,	<b>51</b>	185-2180,	<b>11</b>	185-5363,	<b>17</b>
098-7196,	<b>51</b>	140-3099-02,	<b>51</b>	185-2188,	<b>6, 15</b>	185-5364,	<b>17</b>
098-7197,	<b>51</b>	140-3100-02,	<b>51</b>	185-2233,	<b>6</b>	185-5365,	<b>17</b>
098-7199,	<b>51</b>	140-3231,	<b>25</b>	185-2234,	<b>6</b>	185-5366,	<b>17</b>
098-7244,	<b>51</b>	140-3232,	<b>25</b>	185-2238,	<b>19</b>	185-5367,	<b>17</b>
098-7351-03,	<b>51</b>	140-3233,	<b>25</b>	185-2283,	<b>11</b>	185-5368,	<b>17</b>
098-7368,	<b>51</b>	149-2513,	<b>23</b>	185-2284,	<b>11, 12, 16, 20</b>	185-5369,	<b>17</b>
098-7369,	<b>51</b>	149-2547,	<b>51</b>	185-2309,	<b>21</b>	185-5370,	<b>17</b>
098-7465-03,	<b>51</b>	149-2580,	<b>23</b>	185-2338,	<b>11</b>	185-5371,	<b>17</b>
098-7466,	<b>51</b>	149-2583,	<b>23</b>	185-2345,	<b>16</b>	185-5372,	<b>17</b>
098-7482,	<b>51</b>	149-2584,	<b>23</b>	185-2349,	<b>20</b>	185-5373,	<b>17</b>
098-7485-07,	<b>51</b>	149-2585-02,	<b>23</b>	185-2351,	<b>18</b>	185-5374,	<b>17</b>
100-3273,	<b>6</b>	150-2630,	<b>12</b>	185-2353,	<b>7, 13</b>	185-5375,	<b>17</b>
100-3617,	<b>6</b>	150-2639,	<b>12</b>	185-2357,	<b>13</b>	185-5376,	<b>17</b>
100-3707,	<b>6</b>	150-2641,	<b>12</b>	185-2374,	<b>21</b>	185-5377,	<b>17</b>
104-1890,	<b>40</b>	150-2643-S0,	<b>12</b>	185-2385,	<b>16</b>	185-5378,	<b>17</b>
122-0833,	<b>21</b>	150-2724,	<b>12</b>	185-2386,	<b>8, 13, 18</b>	185-5379,	<b>17</b>
123-2051,	<b>29</b>	154-2800,	<b>33</b>	185-2387,	<b>8</b>	185-5380,	<b>17</b>
123-2120,	<b>29</b>	154-3018,	<b>33</b>	185-2388,	<b>19</b>	185-5381,	<b>17</b>
130-4320,	<b>27</b>	155-2424,	<b>33</b>	185-2389,	<b>13, 21, 29, 31</b>	185-5382,	<b>17</b>
130-4321,	<b>27</b>	155-2610,	<b>33</b>	185-2390,	<b>9</b>	185-5383,	<b>17</b>
130-4322,	<b>27</b>	155-2982,	<b>33</b>	185-2393,	<b>10</b>	185-5384,	<b>17</b>
130-4391,	<b>27</b>	155-3110,	<b>33</b>	185-2395,	<b>21</b>	185-5385,	<b>17</b>
130-4392,	<b>27</b>	168-0225,	<b>6</b>	185-2396,	<b>29</b>	185-5386,	<b>17</b>
130-4450-02,	<b>27</b>	185-2016,	<b>7</b>	185-2398,	<b>29</b>	185-5387,	<b>17</b>
130-4462,	<b>27</b>	185-2022,	<b>7</b>	185-2411,	<b>15</b>	185-5388,	<b>17</b>
130-4471,	<b>28</b>	185-2023,	<b>7</b>	185-2413,	<b>15</b>	185-5389,	<b>17</b>
130-4655,	<b>35</b>	185-2026,	<b>7</b>	185-2414,	<b>15</b>	185-5390,	<b>17</b>

## Numerical Index

<u>Part No.</u>	<u>Page</u>	<u>Part No.</u>	<u>Page</u>	<u>Part No.</u>	<u>Page</u>	<u>Part No.</u>	<u>Page</u>
185-5391, 17		185-5496, 29		185-5558, 8		185-5632, 13	
185-5392, 17		185-5500, 15		185-5560, 8		185-5633, 13	
185-5393, 17		185-5501, 15		185-5561, 8		185-5634, 13	
185-5394, 17		185-5502, 15		185-5562, 8		185-5635, 13	
185-5395, 17		185-5503, 15		185-5563, 8		185-5638, 14	
185-5396, 17		185-5505, 21		185-5564, 8		185-5639, 14	
185-5397, 17		185-5506, 21		185-5565, 8		185-5640, 14	
185-5398, 17		185-5507, 21		185-5566, 7		185-5641, 14	
185-5399, 17		185-5509, 21		185-5568, 7		185-5642, 14	
185-5400, 17		185-5510, 21		185-5569, 7		185-5643, 14	
185-5401, 17		185-5512, 21		185-5570, 7		185-5644, 14	
185-5402, 17		185-5513, 21		185-5571, 7		185-5645, 14	
185-5403, 17		185-5515, 9		185-5572, 7		185-5646, 14	
185-5404, 17		185-5516, 9		185-5573, 7		185-5647, 14	
185-5405, 17		185-5517, 9		185-5575, 7		185-5648, 14	
185-5406, 17		185-5519, 9		185-5576, 7		185-5649, 14	
185-5407, 20		185-5520, 20		185-5577, 7		185-5650, 14	
185-5410, 21		185-5521, 20		185-5578, 7		185-5652, 14	
185-5412, 6		185-5522, 20		185-5579, 7		185-5653, 14	
185-5413, 6		185-5523, 20		185-5580, 7		185-5654, 14	
185-5414, 6		185-5524, 20		185-5581, 7		185-5655, 14	
185-5415, 6		185-5525, 20		185-5582, 7		185-5658, 14	
185-5416, 6		185-5529, 20		185-5583, 7		185-5659, 14	
185-5421, 16		185-5534, 33		185-5584, 7		185-5660, 14	
185-5433, 22		185-5536, 33		185-5587, 40		185-5661, 14	
185-5434, 22		185-5537, 18		185-5612, 16		185-5662, 14	
185-5437, 9		185-5538, 18		185-5615, 16		185-5663, 14	
185-5438, 9		185-5539, 18		185-5616, 17		185-5679, 11	
185-5458, 19		185-5540, 18		185-5617, 17		185-5680, 11	
185-5482, 6		185-5541, 18		185-5618, 17		185-5681, 11	
185-5483, 6		185-5542, 18		185-5619, 17		185-5682, 11	
185-5484, 6		185-5545, 18		185-5621, 17		185-5685, 11	
185-5485, 6		185-5546, 18		185-5622, 17		185-5696, 10	
185-5486, 6		185-5547, 18		185-5623, 13		185-5701, 10	
185-5487, 6		185-5550, 18		185-5624, 13		185-5702, 10	
185-5488, 6		185-5551, 18		185-5625, 13		185-5703, 10	
185-5489, 6		185-5552, 18		185-5626, 14		185-5707, 30	
185-5490, 6		185-5553, 18		185-5629, 13		185-5709, 30	
185-5491, 6		185-5554, 8		185-5630, 13		185-5712, 22	
185-5492, 6		185-5555, 8		185-5631, 13		185-5713, 22	

## Numerical Index

<u>Part No.</u>	<u>Page</u>	<u>Part No.</u>	<u>Page</u>	<u>Part No.</u>	<u>Page</u>	<u>Part No.</u>	<u>Page</u>
185-5714,	22	185-6707,	14	185-7267,	12	319-2340-01,	47
185-5715,	22	185-6711,	21	185-7383,	9	319-2340-02,	48
185-5716,	22	185-6738,	16, 17	185-7389,	16	319-3033-02,	42
185-5717,	22	185-6739,	13	185-7390,	16	320-1875-01,	44
185-5718,	19	185-6749,	13	185-7397,	16	320-1875-04,	44
185-5719,	19	185-6759,	13, 18, 21	191-2200,	40, 41	320-1939-02,	37, 39
185-5720,	19	185-6791,	33	191-2215,	41	321-0307-08,	43
185-5721,	19	185-6818,	29	191-2216,	41	321-0321-07,	43
185-5722,	19	185-6825,	17	191-2217,	41	321-0322,	43
185-5741,	21	185-6845,	13	191-2218,	41	321-0349,	43
185-5742,	21	185-6846,	29	191-2219,	41	323-1199,	47, 48, 49, 50
185-5743,	21	185-6852,	33	191-2221,	41	323-1200,	46
185-5744,	21	185-6853,	33	191-2222,	41	323-1291,	47, 48, 49, 50
185-5745,	21	185-6931,	11	191-2228,	35	323-1325,	46
185-5746,	21	185-6937,	13, 14	193-0318,	19	323-1492,	43
185-5747,	20	185-6945,	10	193-0351,	50	323-1576,	51
185-5792,	19	185-6946,	10	193-0352,	50	323-1582,	43
185-5798,	13	185-6947,	10	201-3540,	40	323-1582-02,	43
185-5800,	21	185-6948,	16	201-3540-01,	40	323-1583,	43
185-5805,	15	185-6956,	15, 29	205-0232,	40	323-1591,	43
185-5807,	20	185-6999,	10	205-0302,	40	323-1607,	51
185-5808,	9	185-7004,	16	220-4484-01,	40	323-1608,	51
185-5810,	8	185-7069,	21	300-4800-96,	42	323-1707,	46
185-5817,	14	185-7070,	21	300-4884,	45	323-1708,	43, 46
185-5818,	14	185-7071,	20	300-4942,	47	323-1709,	43
185-5819,	14	185-7072,	9	300-4943,	48	323-1710,	46
185-5820,	14	185-7073,	9	300-4944,	49	323-1711,	43
185-5823,	16	185-7074,	8	300-4947,	46	323-1712,	43, 46
185-5829,	33	185-7075,	8	300-5027,	50	323-1719,	43, 46
185-5831,	31	185-7076,	7	300-5295-96,	42	332-0819,	43
185-5832,	31	185-7077,	13	302-1641,	49, 50	332-0819-02,	43
185-5833,	31	185-7078,	11	302-2002,	37, 39, 48, 50	332-1356,	25
185-5985,	16	185-7079,	10	305-0952-02,	35	332-1553,	28, 42
185-6120,	15	185-7080,	12	308-1019,	43	332-1554,	23, 45
185-6257,	21	185-7082,	16	308-1038,	37, 39	332-2112,	43
185-6580,	13	185-7083,	30	308-1062,	47, 48, 49, 50	332-2298,	43
185-6667,	19	185-7084,	19	315-0760,	44	332-2298-01,	43
185-6704,	6	185-7085,	18	315-0770,	43, 44, 45	332-2898,	29
185-6705,	7	185-7086,	18	315-0793,	35	332-2947,	51
185-6706,	13	185-7087,	31	315-0821,	43, 44	332-3384,	44



## Numerical Index

<u>Part No.</u>	<u>Page</u>	<u>Part No.</u>	<u>Page</u>	<u>Part No.</u>	<u>Page</u>	<u>Part No.</u>	<u>Page</u>
332-3408,	<b>45</b>	405-5082-04,	39	503-1895-07,	<b>51</b>	800-0055-01,	<b>51</b>
332-3531-04,	<b>44</b>	405-5086,	<b>28</b>	503-1895-08,	<b>51</b>	800-0310-21,	<b>33</b>
337-2845,	<b>35</b>	405-5308,	<b>28</b>	503-1920,	<b>27</b>	800-0603-01,	<b>25</b>
337-2953,	<b>35</b>	405-5309-03,	<b>37, 39</b>	503-1921,	<b>27</b>	800-2044,	<b>40</b>
338-3416,	<b>43</b>	405-5380-05,	<b>37, 39</b>	503-1922,	<b>27</b>	802-2506,	<b>12</b>
338-3417,	<b>44</b>	405-5545-02,	37, 39	503-1923,	<b>27</b>	808-0023,	<b>50</b>
338-3417-03,	<b>44</b>	405-5545-03,	39	503-1951-46,	<b>29</b>	812-0070,	<b>44</b>
338-3418,	<b>44</b>	405-5546,	<b>37, 39</b>	503-1954,	<b>27</b>	815-0549-01,	<b>39</b>
338-3422,	<b>45</b>	405-5756,	<b>25</b>	503-1959,	<b>27</b>	815-0550-01,	<b>37</b>
338-3475,	<b>48</b>	405-5757,	<b>37, 39</b>	503-1970-02,	<b>27</b>	815-0781,	<b>40</b>
338-3490-01,	<b>46</b>	405-5758-03,	37	503-1979,	<b>25</b>	815-0829-05,	<b>35</b>
338-3490-02,	<b>46</b>	405-5759,	<b>37</b>	503-1985,	<b>25</b>	815-0861,	<b>35</b>
338-3509,	<b>49</b>	405-5762,	<b>37, 39</b>	503-2030,	<b>51</b>	815-0877,	<b>12</b>
338-3512,	<b>47</b>	405-5763-06,	<b>37</b>	503-2052,	<b>23</b>	815-0896-03,	<b>42</b>
338-3573,	<b>46</b>	405-5763-07,	<b>37, 39</b>	505-0266,	<b>33</b>	815-0908,	<b>35</b>
338-3580,	<b>51</b>	405-5779,	<b>37, 39</b>	508-0051,	<b>51</b>	815-0910,	<b>47, 48, 49</b>
338-3587-01,	<b>44</b>	405-5780,	<b>37</b>	508-1105,	<b>43</b>	815-0936,	<b>40</b>
338-3587-04,	<b>44</b>	405-5787,	<b>33</b>	508-1118,	<b>39</b>	818-0226-01,	<b>28</b>
338-3588-01,	<b>44</b>	405-5809-03,	39	509-0329,	<b>27, 29</b>	821-2035,	<b>27</b>
338-3637,	<b>50</b>	405-5809-04,	39	510-0163,	<b>13</b>	821-2096-02,	<b>27, 29, 37, 39</b>
338-3822,	<b>43</b>	405-5810-02,	39	510-0184,	<b>12</b>	821-2096-03,	<b>28, 37, 39, 45</b>
338-3823-01,	<b>44</b>	405-5810-03,	39	511-0187,	<b>30</b>	821-2096-04,	<b>51</b>
338-3824-01,	<b>44</b>	405-5818-S0,	<b>35</b>	518-0515,	<b>42</b>	823-0002-08,	<b>44</b>
338-3824-04,	<b>44</b>	405-5822-01,	39	518-0581,	<b>28, 37, 39</b>	823-0003-03,	<b>35</b>
338-3841,	<b>45</b>	405-5822-02,	39	518-0672,	<b>12</b>	823-0003-05,	<b>23, 25, 28, 33, 35, 42, 45</b>
402-0673-02,	<b>35</b>	405-5874-06,	37	526-0049,	<b>49, 50</b>	823-1002-03,	<b>25, 35</b>
402-0680-01,	<b>35</b>	405-5874-07,	<b>37, 39</b>	526-0054,	<b>45</b>	823-1002-04,	<b>25, 35, 42</b>
402-0687-01,	<b>33</b>	405-5875,	<b>37</b>	526-0115,	<b>33</b>	850-0030,	<b>49, 50</b>
402-0688-02,	<b>33</b>	405-5876-03,	37, 39	526-0409,	<b>49, 50</b>	850-2006,	<b>12</b>
402-0695-02,	<b>33</b>	405-5876-04,	39	526-2080,	18, <b>40, 51</b>	850-2008,	<b>35, 40, 51</b>
403-2213,	<b>51</b>	406-0612,	<b>35</b>	526-2083,	<b>29</b>	854-0028,	<b>23</b>
403-3847-04,	<b>35</b>	406-0842,	<b>39</b>	526-2100,	<b>40</b>	856-0006,	<b>35</b>
403-3859,	<b>29</b>	502-0153,	<b>29</b>	541-0530,	<b>51</b>	856-0008,	<b>35, 45</b>
403-3860,	<b>23</b>	502-0313,	<b>23</b>	541-0531,	<b>51</b>	862-0015,	<b>35, 45</b>
403-3861,	<b>35</b>	502-0395,	<b>27</b>	718-1035,	<b>51</b>	865-0029,	<b>25</b>
403-3863-02,	<b>23</b>	502-1296-02,	<b>23</b>	718-1037,	<b>40</b>	868-0007,	<b>23</b>
405-5069-03,	37, 39	503-0429,	<b>25, 51</b>	725-1027,	<b>12</b>	870-0257,	<b>23</b>
405-5069-04,	39	503-0685,	<b>23, 27</b>	725-1050,	<b>33</b>	870-0540-03,	<b>25</b>
405-5081,	<b>37, 39</b>	503-1137,	<b>27</b>	740-1002,	<b>12</b>		
405-5082-03,	37, 39	503-1774,	<b>51</b>	800-0030,	<b>35</b>		

## Numerical Index

<u>Part No.</u>	<u>Page</u>	<u>Part No.</u>	<u>Page</u>	<u>Part No.</u>	<u>Page</u>	<u>Part No.</u>	<u>Page</u>
870-0542,	28						
870-0557,	33, 40						
870-2054,	23, 27, 45						
870-2055,	51						
871-0010,	49, 50						
871-0025,	45						
895-0297,	33						
98-7497-02,	51						

DO NOT COPY