



Company Profile & Contents

Flojet, Jabsco, and Rule, all divisions of ITT Industries, join to offer the highest quality products available in the Recreation Vehicle market place. A broad line of Flojet water system pumps and accessories combine with the popular Jabsco accumulator tanks, lighting products, toilets and macerator pumps, to create a quality product line, rich in the heritage of recreation vehicles. Rule winches, instruments and chemicals are a valuable new addition. With sales and manufacturing facilities in both the United States and United Kingdom, and representatives around the world, we are committed to offering the finest products and service available.

Sensor VSD™ Water System Pumps

NEW! Sensor VSD™ and Sensor Twin™ VSD1

Water System Pumps

Automatic & Manual Single Fixture Demand Pumps

NEW! LF-12 Series Pumps2

Duplex Water System Pumps

2100 Series Pumps and Parts2

Quad II Water System Pumps

4406 and 4306 Series Pumps and Parts3

Deluxe Water System 3.5 gpm (13.5 lpm)

NEW! Premium Model and Parts4

Electric Pump and Faucet4

Premium Plus 4.5 gpm (17 lpm) Water System Pumps

4325 Series Heavy Duty Water System and Parts5

High Volume Water System Pumps

2840 Series and Parts6

Automatic Water System Pumps

36950 Series and Parts7

Accumulator Tanks

30573, 18810, 12573 Models8

Accessories

Inlet Strainers, Water Pressure Regulators ,
Toggle Switch Panel, High Pressure Check Valve9

Remote Control Searchlights

NEW! 155 SL, 146 SL Models and Secondary Remote Control10

135 SL, 62026 Models and Wiring Cable Accessories11

Work, Flood and Patio Lights

45960 and 45900 Models12

Toilets and Macerator Pumps

NEW! 37075 Designer Style Electric Toilets13

NEW! 18590 Macerator Pump13

Oil Drain and Heater Pumps

Porta-Quick™ Oil Changer14

Compact Magnetic Drive Centrifugal Sealless Heater Pump14

Bottled Water Dispenser

.....15

Danforth™ Compasses

Danforth™ Quest Compasses16

Sudbury® Sealants

Sudbury® Sealants17

Sudbury® Boat/RV Care Products

One Step Fiberglass Restorer and Wax

Aqua Fresh!™, Boat Zoap™, Vinyl Restorer and Protector18

Electric Winches & Accessories

Winches, Cable Disconnect Kits, Winch Covers,


Roller Fairlead Kits and Pulley Blocks19

Quad Port Fittings

.....20

Product Number Index

.....21



usa

Flojet, 20 Icon, Foothill Ranch, CA 92610 USA
Tel: +1 949 859 4945 Fax: +1 949 859 1153



uk

Jabsco, Bingley Road, Hoddesdon, Hertfordshire EN11 0BU
Tel: +44 (0) 1992 450 145 Fax: +44 (0) 1992 467 132



canada

Fluid Products Canada, 55 Royal Road, Guelph, Ontario N1H 1T1
Tel: +1 519 821 1900 Fax: +1 519 821 2569



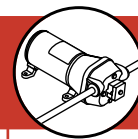
japan

NHK Jabsco Co Ltd, 3-21-10, Shin-Yokohama, Kohoku-ku, Yokohama 222
Tel: +81 (0) 45 475 8906 Fax: +81 (0) 45 475 8908



germany

Jabsco GmbH, Oststraße 28, 22844 Norderstedt
Tel: +49 (0) 40 53 53 73 0 Fax: +49 (0) 40 53 53 73 11



Sensor VSD™ Constant Pressure Water System Pumps



New pressure sensor controlled, multi-outlet water pressure pumps, with variable speed drive, serve 1 - 5 1/2" (13mm) outlets. Motor speed is electronically controlled to maintain steady flow and constant pressure. Sensor VSD™ accepts from 10 to 29 Volt dc for use with 12 or 24 Volts dc power. Amp draw reduces as flow reduces to conserve energy, ranging from less than 1 amp to a maximum of 12 amps.

- Runs silently under normal use
- Unique constant water pressure - NO pressure switch
- Electronically controlled variable flow
- Up to 4.5 gpm (17 lpm) output
- Self priming up to 10ft (3m)
- Gives constant flow and hot water mix
- Eliminates accumulator tank
- Automatically adjusts to 12 Volt dc or 24 Volt dc power input
- Conserves battery power - uses lower amps at lower flow
- True sensor regulated water pressure
- Thermal overload protection automatically stops motor should it overheat due to overload, with auto re-start feature
- Diaphragm design allows extended dry running
- ISO 8846 MARINE (Ignition Protection)

Fitting:	Connections for 3/4" (19mm) hose barb or 1/2" - 14 pipe.
Size:	R4515 - 9.0" L x 6.3" W x 3.75" H (22cm x 16cm x 9.5cm) R4525 - 10.3" L x 6.3" W x 3.75" H (25.2cm x 16cm x 9.5cm)
Weight:	R4515 - 4.3 lb (2.0 kg) R4525 - 6.3 lb (3.0 kg)
Flow:	R4515 - 0-3.7 gpm (0-14 lpm) R4525 - 0-4.5 gpm (0-17 lpm)
Running pressure:	R4515 - 25 psi (1.7 bar) R4525 - 30 psi (2.1 bar)
Shut-off pressure:	R4515 - 35 psi (2.4 bar) R4525 - 40 psi (2.8 bar)
R4515-743A	Sensor VSD™ 3.7, 12 - 24 Volt dc model, fuse 15 amp.
R4525-743A	Sensor VSD™ 4.5, 12 - 24 Volt dc model, fuse 15 amp.
81000-346	Instruction Sheet.
20409-043	Service Kit.

Note: Sensor VSD™ pumps require a battery to be installed in the dc power supply when using an ac to dc converter or battery charging system.

CE Certified CSA Listed

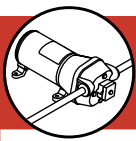
new R2580 Sensor Twin™ VSD - Delivers 9 gpm (34 lpm)

For added performance, call the factory about the new R2580 Series. These extra high powered systems feature:

- Dual 4.5 gpm (17.0 lpm) pumps to deliver 9 gpm (34 lpm) without a pressure tank.
- System cut-off pressure is 45 psi.
- The secondary pump is a 4.5 gpm switched pump.
- Inlet and outlet ports are 3/4" (19mm) hose barb for reinforced poly hose.
- The R2580 is available in 12 Volts dc and 24 Volts dc models to service the RV, Bus Conversion and Commercial Coach markets.

Ask your supplier/retailer to order a 12 Volts dc R2580-100A or a 24 Volts dc R2580-300A model for that special high performance application.

Sensor VSD™ Water System Pumps



Water System Pumps

Automatic and Manual Single Fixture Demand Pumps



LF-12 Series Pumps

- Compact automatic demand water system pump
- Supplies up to 3 fixtures, one or two at a time
- Built-in pressure switch automatically starts and stops pump when faucet is opened and closed
- Self-priming so pump can be located above water tank
- Runs dry for extended periods of time
- Built-in thermal protector
- Also available without switch for manual application
- IAPMO and CSA listed

Size: 2.3" H x 3.5" W x 6.2" L
(58 x 89 x 157mm)

Weight: 1.3 lb (0.6 kg)

Inst. Sheet: 81000-309

Model	Volts dc	Open Flow gpm (lpm)	Pressure On/Off psi (bar)	Amps @ 10 psi (0.7 bar)	Strainer Included
LF122-202	12	1.1 (4.3)	22/35 psi (1.5/2.4 bar)	1.9	No
LF122-002	12	1.1 (4.3)	N/A	1.9	No

Duplex Water System Pumps



2100 Series Pumps

- For use with 1, 2 or 3 fixture systems
- Fully automatic demand pumps
- Supplies 1.3 or 2.3 gpm (5 or 8.7 lpm)
- Includes fittings for easy installation
Two 1/2" (13mm) hose barb ports
One 1/2" - 14 straight pipe port
- Install with FLOJET 1740-002 strainer (see page 9)
- The -12 and -919 are IAPMO listed
- The -919 model is CSA listed

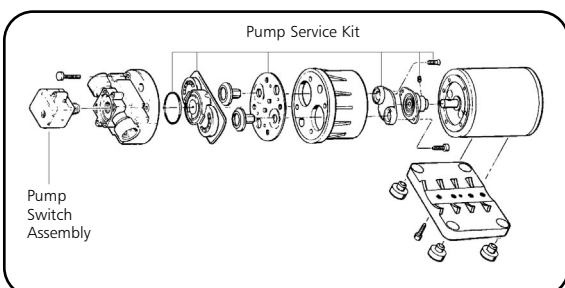
Size: 3.75" H x 8.2" L x 3.25" W
(95 x 208 x 83mm)

Shp. Wt: 4.0 lb (1.8 kg)

Inst. Sheet: 81000-127,
81000-260
(-916/-919)

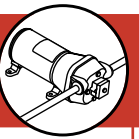
Model	Volts dc	Open Flow gpm (lpm)	Pressure On/Off psi (bar)	Amps @ 10 psi (0.7 bar)	Strainer Included
2100-12	12	2.3 (8.7)	15/27 (1/1.9)	2.5	No
2100-740	24	2.3 (8.7)	15/27 (1/1.9)	1.5	No
2100-750**	12	2.3 (8.7)	15/27 (1/1.9)	2.5	No
2100-916*	12	1.4 (5.3)	8/12 (0.6/0.8)	1.9	No
2100-919 ²	12	1.3 (4.9)	30/45 (2.1/3.2)	2.5	No

*Low pressure export model **Includes fuse holder and 7 Amp fuse
²CSA Listed



Service Parts

Model	Motor	Pump Service Kit	Pressure Switch Assembly
2100-12	2009-004C	21046-057	2095-105
2100-740	2019-001A	21046-057	2095-105
2100-750	2009-004C	21046-121	2095-105
2100-916	2009-043A	21046-057	2095-108
2100-919	2009-008A	21046-187	2095-103



Quad II Water System Pumps 'Quiet Quad'

4406 Series Pumps with Bypass

- Includes bypass valve which greatly reduces pulsating water and pressure switch chatter
- Smooth flow from 1 gpm to over 3.2 gpm (3.8 to over 12.1 lpm)
- Eliminates the need for an accumulator tank
- Designed for up to 5 fixtures
- Runs dry without harm to the pump
- Easy to install, service and winterize
- Includes plug in ports for easy installation:
 - Two 1/2"-14 straight pipe ports
 - Two 1/2" (13mm) hose barb ports
- Install a Flojet water strainer to protect pump from debris (not included, see page 9)
- IAPMO & CSA listed (12 Volt dc)

Size: 3.75" H x 6.3" W x 9.9" L
(95 x 160 x 252mm)

Weight: 3.9 lb. (1.8 kg)

Pressure: 22 - 35 psi
(1.5 - 2.4 bar)

Service Kit: 20409-043

Inst. Sheet: 81000-233

WARNING



Pumps are not to be used for pumping gasoline or flammable liquids. Explosion and death could occur.



Model	Volts	Open Flow gpm (lpm)	Pressure On/Off	Amps @ 10 psi (0.7 bar)	Strainer Included
4406-143	12V dc	3.2 (12.1)	22/35 psi (1.5/2.4 bar)	3.9	No
IAPMO Listed					
4406-343	24V dc	3.3 (12.5)	22/35 psi (1.5/2.4 bar)	2.0	No
IAPMO & CSA listed (12 Volt dc)					
4406-043	115V ac	3.3 (12.5)	22/35 psi (1.5/2.4 bar)	0.4	No

4306 Series Pumps The Universal Replacement Pump

- Smooth water flow to over 3.2 gpm (12.1 lpm)
- Designed for up to 5 fixtures
- Runs dry without harm to the pump
- Easy to install, service and winterize
- Recommended for use with accumulator tank
- Includes plug-in ports for easy installation:
 - Two 1/2"-14 straight pipe ports
 - Two 1/2" (13mm) hose barb ports
- Install a Flojet water strainer to protect pump from debris (not included, see page 9)
- IAPMO & CSA listed (12 Volt dc)

Size: 3.75" H x 6.3" W x 8.6" L
(95 x 160 x 218mm)

Weight: 3.9 lb. (1.8 kg)

Pressure: 22-35 psi
(1.5-2.4 bar)

Service Kit: 20409-043

Inst. Sheet: 81000-232

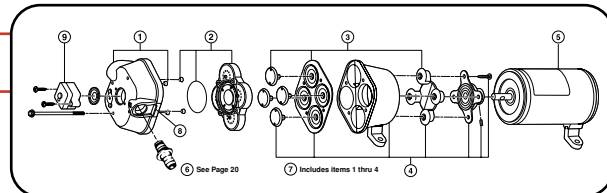


Model	Volts dc	Open Flow gpm (lpm)	Pressure On/Off	Amps @ 10 psi (0.7 bar)	Strainer Included
4406-500	12	3.2 (12.1)	22/35 psi (1.5/2.4 bar)	4.0	No
IAPMO Listed					
4406-501	24	3.3 (12.5)	22/35 psi (1.5/2.4 bar)	1.8	No

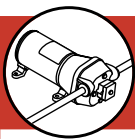
QUAD II Service Parts

* Requires new mounting feet (kit 20717-100A) when used with three-footed Quad pumps.

† Add "R" to motor no. for CE certified model (i.e., R2009-076A).



KEY	1	2	3	4	5	7	8	9
Model	Upper Hsng	Valve Assy	Diaphragm	Lower Hsng	Motor †	Pump Head	Side Clips	Prsr Switch Kit
4306-500	20404-009	20407-030	20403-040	20419-001	2009-076A*	20406-008A	20408-000	2090-104
4306-501	20404-009	20407-030	20403-040	20419-001	2019-024A*	20406-008A	20408-000	2090-104
4406-043	20404-000	20407-030	20403-040	20419-001	2029-087A	20406-001A	20408-000	2090-104
4406-143	20404-000	20407-030	20403-040	20419-001	2009-076A*	20406-001A	20408-000	2090-104
4406-343	20404-000	20407-030	20403-040	20419-001	2019-024A*	20406-001A	20408-000	2090-104



Water System Pumps

Deluxe Water System 3.5 gpm (13.5 lpm)



Premium Model

- New larger motor for more power
- Delivers over 3.5 gpm (13.5 lpm)
- Provides higher pressure to all fixtures
- Improves a low flow, low pressure system
- Model 'A' includes strainer

Size: 3.75" H x 6.3" W x 8.6" L
(95 x 160 x 218mm)

Shp. Wt: 4.5 lb. (2.1 kg)

Pressure: 20 - 40 psi
(1.4 - 2.8 bar)

Service Kit: 20409-043

Inst. Sheet: 81000-267

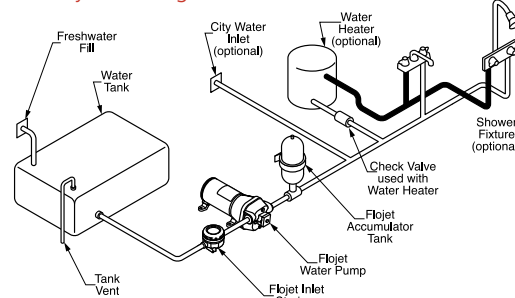
Model	Volts dc	Open Flow gpm (lpm)	Pressure On/Off	Amps @ 10 psi (0.7 bar)	Strainer Included
4305-144A	12	3.5 (13.5)	20/40 psi 1.4/2.8 bar	5.0	Yes



Recommended Package

- Use the Pressurized 1 Liter Accumulator Tank 30573-0001A, for a smooth steady flow. See page 8.

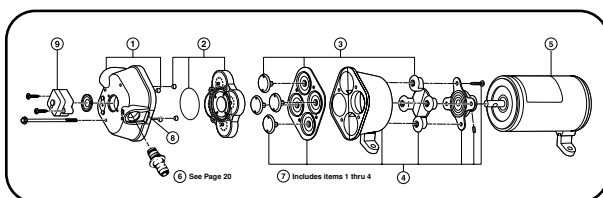
Water System Diagram



Jabsco Electric Pump & Faucet

- The answer to running water at the turn of a switch
- Quiet operation electric pump is compact, easy to install, draws only 1.6 amps at 12 Volts and pumps 1 gpm at 3 psi (3.8 lpm at 0.2 bar)
- Stainless steel faucet has a swing spout, easy-to-clean white plastic base and built-in switch to operate
- Switch rating up to 5 amps at 12 Volts
- Available as individual components or pump/faucet combination package
- Pump and faucet have a 3/8" (9.5mm) hose connection
- Centrifugal pump is not self-priming and must be mounted below water level or tank
- Pump may be screwed directly into water tank
- May be used with fresh or salt water

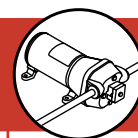
Model	Description	gpm (lpm)	Amps Fuse Size	Weight lb (kg)	Std Ctn
42510-0000	Pump Only	2.0 (7.6)	1.6 (3.0)	3/4 (0.3)	6
42520-0000	Faucet Only	-	-	1/4 (0.1)	6
42530-0000	Pump & Faucet	2.0 (7.6)	1.6 (3.0)	1.0 (0.5)	6



QUAD II Service Parts

† Add "R" to motor no. for CE certified model (i.e., R2009-087A).

KEY Model	1 Upper Hsng	2 Valve Assy	3 Diaphragm	4 Lower Hsng	5 Motor †	7 Pump Head	8 Side Clips	9 Prsr Switch Kit
4305-144	20404-003	20407-030	20403-040	20419-002	2009-087A	20406-002A	20408-000	2090-118



Water System Pumps

Premium Plus 4.5 gpm (17.0 lpm) Water System Pumps

4325 Series Heavy Duty Water System

- For use with a 1 to 5 gallon (3 to 20 liter) accumulator tank - 4.5 gpm (17.0 lpm)
- Designed for 6 or more fixtures
- Provides quiet operation and smooth flow
- Runs dry without harm to the pump
- Includes plug-in ports for easy installation:
Two 1/2" (13mm) - 14 straight pipe thread ports
Two 3/4" (19mm) hose barb ports
Two 3/4" (19mm) garden hose ports
- Install with new FLOJET strainer (included) to protect pump from debris

Size: 3.75" H x 6.3" W x 9.9" L
(95 x 160 x 252mm)

Shp. Wt: 6.0 lb (2.8 kg)

Pressure: 40 psi (2.8 bar)

Service Kit: 20409-043

Inst. Sheet: 81000-074



Model	Volts	Open Flow gpm (lpm)	Pressure On/Off	Amps @ 10 psi (0.7 bar)	Strainer Included
4325-143	12 dc	4.5 (17)	40psi (2.8 bar)	6.0	Yes
4325-343	24 dc	4.5 (17)	40psi (2.8 bar)	2.5	Yes
4325-043	115 ac	4.5 (17)	40psi (2.8 bar)	2.0	Yes

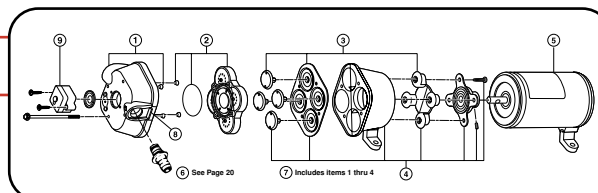
Recommended Package

- Use the Pneumatic Bladder Accumulator Tank 18810-0000, for less cycling and smooth flow. See page 8.

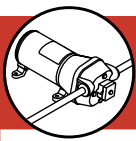


QUAD II Service Parts

* Requires new mounting feet (kit 20717-100A) when used with three-footed Quad pumps.
† Add "R" to motor no. for CE certified model (i.e., R2009-080A).



KEY Model	1 Upper Hsng	2 Valve Assy	3 Diaphragm	4 Lower Hsng	5 Motor †	7 Pump Head	8 Side Clips	9 Prsr Switch Kit
4325-043	20404-003	20407-030	20403-040	20419-002	2029-091A	20406-002A	20408-000	2090-118
4325-143	20404-003	20407-030	20403-040	20419-002	2009-080A*	20406-002A	20408-000	2090-118
4325-343	20404-003	20407-030	20403-040	20419-002	2019-027A*	20406-002A	20408-000	2090-118



High Volume Water System Pumps

High Volume Water System Pumps



2840 Series High Volume Water Pressure System

- Integrated pump and accumulator tank system
- Compact design installs easily in convenient locations
- May be mounted vertically or horizontally
- Supplies 4.5 gpm (17.0 lpm) up to 6 gpm (22.7 lpm) with fully charged tank
- Can run dry without harm
- FDA materials in pump and accumulator tank for drinking water
- Self-priming up to 10 ft. (3.1 m)
- Includes assorted ports for easy installation
- Accumulator tank has total volume of 1.1 gallon (4.1 liter)
- Install the FLOJET strainer (included) to protect pump from debris

Now there are 3 models to choose from to meet your requirements:

2840-100

4.5 gpm (17 lpm) - 10 valves:

- This unit handles washer/dryer, ice maker, filtered water, two baths, and kitchen.

2840-110

3.5 gpm (13.5 lpm) - 7 valves:

- This deluxe system can handle washer/dryer, ice maker, filtered water, one bath, and a kitchen.

2840-120

3.3 gpm (12.5 lpm) - 5 valves:

- This unit is ideal for ice maker, filtered water, bath, and kitchen.

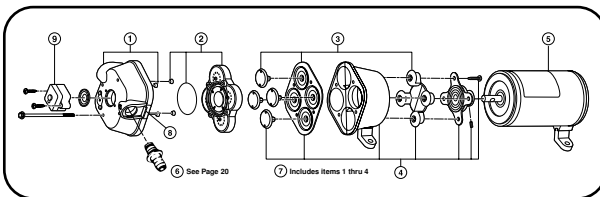
Model	Volts	Open Flow gpm (lpm)	Pressure Shut Off	Max Amps
2840-100	12V dc	4.5 (17)	40 psi (2.8 bar)	10.0
2840-110	12V dc	3.5 (13.5)	40 psi (2.8 bar)	8.0
2840-120	12V dc	3.3 (12.5)	40 psi (2.8 bar)	7.0
R2840-300	24V dc	4.5 (17)	40 psi (2.8 bar)	5.0
2840-000	115V ac	4.5 (17)	40 psi (2.8 bar)	1.5

Size: 7.2" H x 11.3" W x 12.8" D
(191 x 286 x 325mm)

Shp. Wt: 8.8 lb (4 kg)

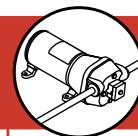
Service Kit: 20409-043

Inst. Sheet: 81000-290



Service Parts

Service Kit	Upper Hsng Assy Kit	Check Valve Assy	Lower Housing	Accumulator Tank	Base	Port Kit (2 each)	Pump Head Assembly	Port Clips (2 each)	Pressure Switch
20409-043	20404-003	20407-030	20419-002	20799-000A	20796-000A	20381-022	20406-002A	20408-000	2090-118



Jabsco 36950 Series Pumps

- A direct replacement pump for many early (1975 to 1980) Recreation Vehicles with two or three outlets
- See page 3 for other pumps that can be used in place of this model
- Dependable, easily repaired, and able to run dry for extended periods
- Belt drive and flexible mounts aid noise reduction
- Pump protected against city water pressure by built-in port check valve
- Pulsation dampeners absorb water hammer
- Ports fit 1/2"-5/8" (13-16mm) hose

Size:	36950-2000
	8-1/2" H x 5-9/16" W x 6-9/16" L (216 x 141 x 167mm)
Weight:	10 lb (4.5 kg)
Std Carton:	4
Size:	36950-2010
	8-1/2"H x 5-9/16" W x 6-9/16" L (216 x 141 x 167mm)
Weight:	10 lb (4.5 kg)
Std Carton:	1



WARNING



Explosion Hazard.
Pumps with AC motors can spark.
Explosion and death can occur.
Do not use where flammable vapors are present.

Model	Volts dc	Open Flow gpm (lpm)	Amps/ Fuse
36950-2000	12	3.0 (11.4)	6.0 (8)
36950-2010	24	3.0 (11.4)	3.0 (4)

NOTE: New motors may exhibit a slightly higher amp draw than nominal until broken in.

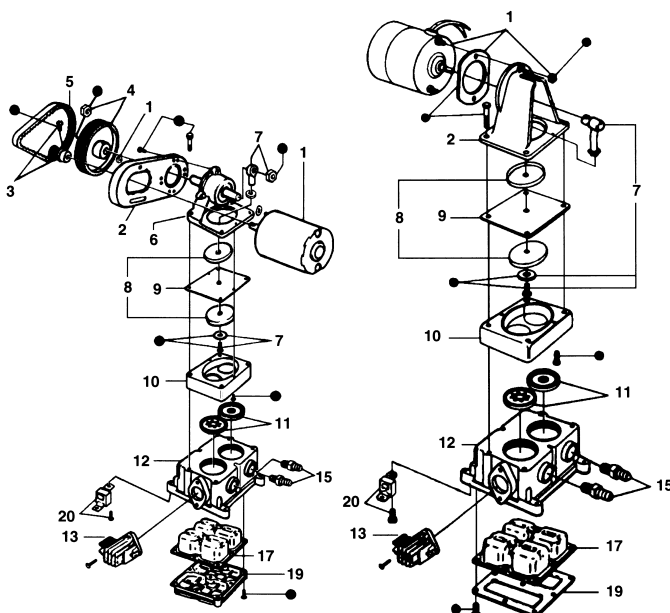
Service Parts

Key	Description Replacement Parts	36950-1 Series	36950-2 Series
1	Motor Kit 12V dc	30200-0000	30200-0000
5	Belt	30022-0000•	30022-0000•
7	Connecting Rod	-	-
9	Diaphragm	30015-0000•	30015-0000•
11	Valve Set	30004-0000†	30004-0000†
12	Base Kit (See †)	35620-1100	44114-1100
13	Pressure Switch	37121-0010	37121-0010
		37121-0000*	37121-0000*
15	Ports Set	37176-0000†	37176-0000•
17	Pulsation Dampener	37178-0000†	44127-1000†
21	Service Kit (See •)	30126-0000	43990-0061

Key	Description Replacement Parts	36970-1 Series	36970-2 Series
1	Motor Kit 12V dc	30201-0000	30201-0000
5	Belt	-	-
7	Connecting Rod	30033-0000	30033-0000
9	Diaphragm	30015-0000•	30015-0000•
11	Valve Set	30004-0000†	30004-0000†
12	Base Kit (See †)	35620-1100	44114-1100
13	Pressure Switch	37121-0010	37121-0010
		37121-0000*	37121-0000*
15	Ports Set	37176-0000†	37176-0000•
17	Pulsation Dampener	37178-0000†	44127-1000†
21	Service Kit (See •)	30123-0000	43990-0064

36950-Series

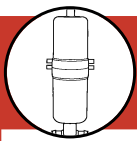
36970-Series



• Indicates items included in Hardware Kit (Key 21)

* Includes Switch and Conversion Kit to mount new type switch onto older style -J and -0000 pumps.

Automatic Water System Pumps



Accumulator Tanks

Install between pump and water heater in main distribution line



Pressurized 1 Liter 30573-0001 Accumulator Tank

- Compact pneumatic bladder tank is designed for smaller systems and spaces
- Mounts easily in any position
- Smooths faucet and shower flow by eliminating pulsations and water hammer for an improved water system
- Includes both 1/2" (13mm) hose barb and 1/2" - 14 straight thread snap-in port fittings
- Tank is pressurized to 10 psi (0.7 bar) and can be fine-tuned to cut-in pressure of pump
- NSF Listed
- Meets RVIA requirements

Size: 4-11/16" DIA x 12-13/16" H (119 x 325mm)
Weight: 1.6 lb (0.7 kg)
Inst. Sheet: 81000-584

Model	Max Working Pressure psi (bar)	Working Volume quart/liter
30573-0001	125 (7.1)	1



Jabsco Model 18810 Pneumatic Bladder Accumulator Tank

- Will smooth flow from faucets and shower, reducing pump cycling and eliminating pulsations and water hammer
- Water is totally separated from air chamber and metal tank by a bladder and polypropylene tank liner
- NSF-61 listed for all water applications
- Volume of tank is 2 gallons (7.8 liters) with a working water volume of about 1 gallon (3.9 liters)
- Mounts horizontally or vertically, even upside down
- Includes brackets and band clamps
- Port is 3/4" NPT (male)
- Pre-pressurized to 20 psi (1.4 bar)
- Tank may be fine tuned to cut-in pressure of pump
- Meets RVIA requirements

Size: 8" DIA x 12-5/8" H (203 x 320mm)
Weight: 5 lb (2.3 kg)

Model	Max Working Pressure psi (bar)	Working Volume gallon/liter
18810-0000	100 (6.9)	1 (3.9)

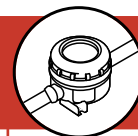


Jabsco Model 12573 Accumulator Tank

- Economy model reduces water system pulsation and prevents rapid on/off pump cycling
- No moving parts
- Trapped air in tank must be replenished periodically
- Removable plug in top for draining and winterizing
- One quart capacity
- Operating pressure up to 125 psi (7.1 bar)
- Connects to main water distribution line
- Tee fitting for 1/2" (13mm) hose at base of tank
- Molded of ABS Plastic

Size: 5" DIA x 13-1/8" H (127 x 330mm)
Weight: 1.5 lb (0.7 kg)

Model	Max Working Pressure psi (bar)	Capacity quart/liter
12573-0000	125 (7.1)	1



Model 1740 Series Inlet Strainers

- Keeps debris and particles from entering any water pump
- Plug-in Quad Port 90° strainer allows for easy installation and compatibility with Flojet pumps
- Threaded bowl makes cleaning quick and easy
- Stainless Steel 40 mesh screen is recommended for fresh water applications.



Part No	Inlet	Outlet	Screen
1740-000	3/4" (19mm) Barb	3/4" (19mm) Barb	40 Mesh
1740-002	1/2" (13mm) Barb	1/2" (13mm) Barb	40 Mesh
1740-003	3/8" (9.5mm) Barb	3/8" (9.5mm) Barb	40 Mesh
1740-004	1/2" - 14 Pipe	1/2" - 14 Pipe	40 Mesh
20420-040	Strainer Repair Kit		40 Mesh

Part No	Inlet	Outlet	Screen
1740-010	3/4" (19mm) Barb	Quad Port 90°	40 Mesh
1740-012	1/2" (13mm) Barb	Quad Port 90°	40 Mesh
1740-014	1/2" - 14 Pipe	Quad Port 90°	40 Mesh
1740-375	3/8" NPT(f)	3/8" NPT(f)	40 Mesh
All Quad Ports are 90° elbows			

Water Pressure Regulators

- Protect your RV appliances and pump from damaging pressures of unregulated water hookups
- Reduce high water pressures up to 150 psi (10 bar) down to 45 psi (3.1 bar)
- Built-in backflow preventer
- Easy to install
- Easy-clean in-line filter
- CSA (IAPMO TS 28), NSF-18
- Two models: a permanently installed flush mount model and an in-line model with garden hose fittings that connect water entry and garden hose water hookup

Weight: 1750 (Flush)
6 oz (0.2 kg)
1750 (In-line)
3 oz (0.1 kg)
35471 - 1.5 lb (0.7 kg)

Part No	Inlet	Outlet	Type
1750-045	3/4" GHT	3/4" GHT	In-line
1750-145	3/4" GHT	1/2" - 14 Pipe	Flush
1750-245	3/4" GHT	1/2" - 14 Pipe	Flush
35471-0000*	1/2" NPT	1/2" NPT	In-line

*The Model 35471-0000 is set to a pressure of 40 psi.



Model 35471-0000 Anti-Siphon Pressure Reducer
Model 1750-245 (Chrome)
Model 1750-045 (White)
Model 1750-145 (White)

Rule Toggle Switch Panel

- Water resistant
- Rated for 15 amps
- Switch toggles on and off
- Single pole, single throw

Model: 49 PWC
Rating: 15 amps, ac/dc



Jabco High Pressure Check Valve

- When located at the pump outlet, this high pressure check valve protects your pump from the damaging high pressure of unregulated city water connections
- Can be located at the water heater inlet to prevent backflow of hot water into the cold water system and pump
- Ports are sized for 1/2" (13mm) slip-on hose

Size: 1-1/2" x 4" (40 x 100mm)
Weight: 1.4 lb (0.1 kg)
Model: 34344-000



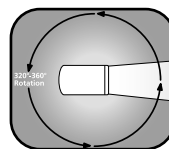


Remote Control Searchlights

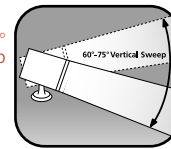
We quote performance of our searchlight range in two ways; CANDLEPOWER is the total output over the entire beam spread.

LUX is the brightness at a point within the beam spread.

From the definitions, it is clear that the most important feature in choosing a searchlight, remembering your RV size, is the Lux value. Therefore, searchlights with the highest Lux value put more usable light on the target.



60°-75°
Vertical Sweep
320°-360°
Rotation



Jabsco 155 SL RC Searchlight

- Easily replaceable 5" (130mm) halogen sealed beam delivers 100,000 candlepower.
- 1 lux at 885 ft (268 meters).
- Full 360° horizontal rotation, 75° vertical sweep.
- Complete with joystick remote control (12 Volt dc model) or optional touch-pad remote control including joystick (12/24 Volts dc).
- Electronic control includes automatic 20° sweep feature, two speed movement - Fast for searching, Slow for pinpointing target, plus automatic transmission of "SOS" distress signal through 360° in emergency.
- Complete with 15ft (4.5m) cable, with optional extension cables.
- Tough thermoplastic housing and base.
- Optional secondary remote control panel for dual dashboard stations - Instant command from each panel without need to select station (12/24 Volt dc model only).

Size: 6-3/8" W x 8" L x 8" H
(16 x 20 x 20cm)

Weight: 5 lb (2.3 kg)

Model	Volts	Watts	Amps	Candle Power	Bulb Number
61050-0012	12	50	5	100,000	18753-0528
61050-1224*	12/24	50	5	100,000	18753-0528

*Electronic Control



Jabsco 146 SL RC Searchlight

- The 146 SL gives you more usable light on-target
- Sealed-beam halogen bulb, with a 15 Lux value and 175,000 candlepower, produces the dusk-to-dawn piercing light that enables campers to expand their recreational day
- Full 360° rotation and 60° vertical sweep
- Complete with 15ft (4.5m) cable, with optional extension cables.
- New generation of mid-sized searchlights feature sleek styling and rugged construction
- Searchlight housing is a modern tough weather and corrosion resistant thermoplastic

Size: 8-1/2" W x 10-1/8" L x 8-15/16" H
(22 x 26 x 20cm)

Weight: 9 lb (4 kg)

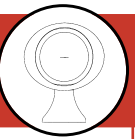
Model	Volts	Watts	Amps	Candle Power	Bulb Number
60080-0012	12	50	4	175,000	18753-0455
60080-0024	24	50	2	175,000	18753-0455



Secondary Remote Control Kits

- Attractive style complements any instrument panel
- Built-in fuse and plug connectors for easy wiring
- Two speed control for precise beam aiming
- Kit includes secondary control panel, station selector panel V splices and butt connectors.
- Secondary harness must be selected from wiring cable accessories options.

Model	Volts	Searchlight
43670-0005	12	135 SL
43670-0004	12	146 SL, 155 SL, 5" Chrome
43670-0004	24	146 SL

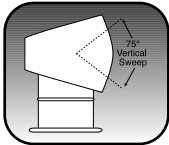


Remote Control Searchlights

Jabsco 135 SL RC Searchlight

- Sleek design will enhance the appearance of any RV
- Powerful 135 SL is easy to install and stands up to any environment with ease
- Great investment in safety, and makes finding markers and spaces much easier
- Tough weather and corrosion resistant white thermoplastic construction
- Sealed-beam halogen bulb produces dusk-to-dawn piercing light
- Integrally molded clutch design allows the light to be operated against limit stops, without damage
- Light has a 15ft (4.5m) cable attached that splices to the leads on the switch
- Easy-fit black control is designed to complement instrument panels or fit in any location on the dash
- Fused On/Off switch and four-way directional switch

Size: 7" W x 8-1/8" L x 7-7/8" H
(18 x 18 x 21cm)
Weight: 6 lb (2.7 kg)



Unique bulb only 75° vertical sweep housing maintains sleek horizontal position.

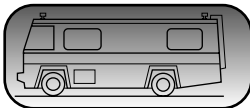


Model	Volts	Watts	Amps	Candle Power	Bulb Number
60020-0000	12	50	4	100,000	18753-0178
60020-0024	24	50	2	100,000	18753-0178

Jabsco 62026, 5" Chrome RC Searchlight

- Solid brass construction with polished chrome finish
- Designed for handling severe weather conditions
- Light features completely motorized drive unit enclosed in light housing
- Exclusive "Clutch-A-Matic" feature protects drive unit against overload allowing light to be operated for extended periods of time without harm
- Includes a separate 8 ft (2.5m) wiring cable with plug connectors on each end
- Light is equipped with a fingertip control lever for 360° horizontal sweep and 65° vertical motion
- Dual switch for precise beam control in conjunction with on/off switch for spot or flood beam
- Light head can be moved manually without damage
- 9 Lux at 330ft (100m)

Size: 7" L x 5" W x 9-1/2" H
(18 x 13 x 24cm)
Weight: 7-1/2 lb (3.4 kg)



Remote control light can be fitted anywhere, front or rear.



Model	Volts	Watts	Amps	Spot/Flood	Sealed Beam Number
62026-4002	12	100	10	100,000/	67296-0000
62022-4002 (Short base)				50,000 cp	

Wiring Cable Accessories

- Extension harnesses enable remote controls to be fitted further from the light than standard cables allow, and are needed to install secondary remote control kits.
- For 135 SL, 146SL, 155SL (12 Volts dc), 5" chrome RC models.



Model	Harness Size
43990-0013	10 ft (3m)
43990-0014	15 ft (4.5m)
43990-0015	25 ft (7.6m)
43990-0016	35 ft (10.7m)



Jabsco Model 45960 Flush Mount Floodlight

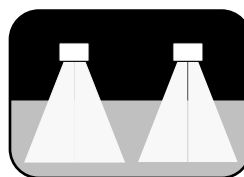
- Flush mount floodlights for side area lighting or safe backup lighting
- Expand your outside hours with the convenience of flood lights
- Two beam patterns to choose from: Flood Bulb or Trapezoidal Bulb patterns

- Flood bulbs recommended for backup mounting
- Trapezoidal bulbs are right for patio side mount

Size: 8-7/8" L x 6-9/16" H x 3-3/16" D
(22.5 x 17 x 8cm)

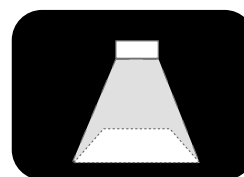
Weight: 3.3 lb (1.5 kg)

FLOOD BULB
Model 45960-0001



Rear Mounted

TRAPEZOIDAL BULB
Model 45960-0000



Side Mounted

Model	Volts	Watts	Amps	Sealed Beam Number
45960-0000 Trap	12	50	3.8	18753-0352
45960-0001 Flood	12	50	3.8	18753-0351



Jabsco Model 45900 Tungsten Halogen Floodlight

- High power, long-life floodlights
- With 9,900 bulb candlepower and 450 hour average life, our tungsten halogen bulbs deliver 50% more light and 50% more life than ordinary incandescent bulbs
- Isolated sealed beam design, high impact polypropylene white housing, and stainless hardware
- Built to stand up to severe outdoor environment; have passed rigorous tests including salt spray, water immersion, 1,200 psi high pressure spray, and 5 g shock testing, all with zero damage
- Have earned a reputation as being one of the most reliable heavy duty lighting products made
- Mounting bracket included is designed for easy fitting in a variety of installations

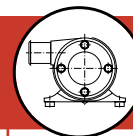
Size: 5" L x 3" W
(12.7 x 7.7cm)

Weight: 1 lb (0.5 kg)

Model	Volts	Watts	Amps	Candle Power	Bulb Number
45900-1000	12	50	4	9,900	45903-0002



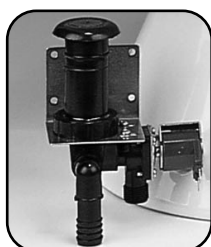
The Jabsco Halogen Floodlight is packaged in a colorful retail display box, with features and specifications clearly visible to the customer.



Jabsco Model 37075 Designer Style Electric Toilets

- Jabsco designer styled electric toilets bring a new level of elegance to marine-type toilets
- Sleekly contoured toilets are available in either white or bone china
- Designed to fit snugly against a vertical wall and requires no space below floor
- Skirted vitreous china bowl conceals all plumbing and electrical wiring, for a clean, uncluttered look
- The bowl and full-size seat assembly are ergonomically designed for comfort
- Toilets are 15-1/2" (39.4cm) wide by 19-1/4" (48.9cm) long and are fitted with contoured, household size seat and lid assemblies
- Available in two heights: The DS-214 Series is a compact 14" (35.6cm) tall and the DS-217 Series is a full size (household height) 17" (43.2cm) tall
- All options include a powerful waste water evacuation pump with built-in macerator

Shp. Wt: 57 lb (25.8 kg)



37075-Series
Solenoid Valve &
Siphon Breaker



DS-214 & DS-217
Toilets
Multi-function
Flush Control Panel

Model	Type	Colour	Volts dc	Amps	Fuse/ Breaker
37075-0092	DS 214	White	12	10	25
37075-0094	DS 214	White	24	5	15
37075-1092	DS 217	White	12	10	25
37075-3092	DS 217	Bone	12	10	25
37075-1094	DS 217	White	24	5	15
37075-3094	DS 217	Bone	24	5	15

All models equipped with Solenoid valve to control rinse water.

Flojet Series 18590 Macerator Pump

- RV macerator pump can empty a 30 gallon (115 liter) holding tank in 3 minutes
- New run dry protection extends impeller life
- RV version accepts 3" (75mm) hose on the inlet port; Marine equipped with 1-1/2" (38mm) hose barb and 1-1/2" (38mm) male pipe
- Grinds waste into small particles for easy disposal through 1" (25mm) hose barb outlet
- Self-priming with a flow rate of 13 gpm (49 lpm)
- Pump can be permanently installed for easy holding tank evacuation into a toilet or plumbing clean out access

Weight: **18590-1010**
18590-1000
18590-1001
5 lb (2.3 kg)
18690-1000
19 lb (8.6 kg)



Model	Inlet	gpm (lpm) @ 10ft (3m)	Volts	Amps	Fuse/ Breaker
18590-1010	RV 3" (75mm)	13/49	12 dc	16	20
18590-1000	Marine 1-1/2" (38mm)	13/49	12 dc	16	20
18590-1001	Marine 1-1/2" (38mm)	13/49	24 dc	8	10
18690-1000	Park 1-1/2" (38mm)	13/49	115 ac	5	T.P.†

† Thermally Protected Motor.

WARNING



Pumps are not to be used for pumping gasoline or flammable liquids. Explosion and death could occur.



NEW



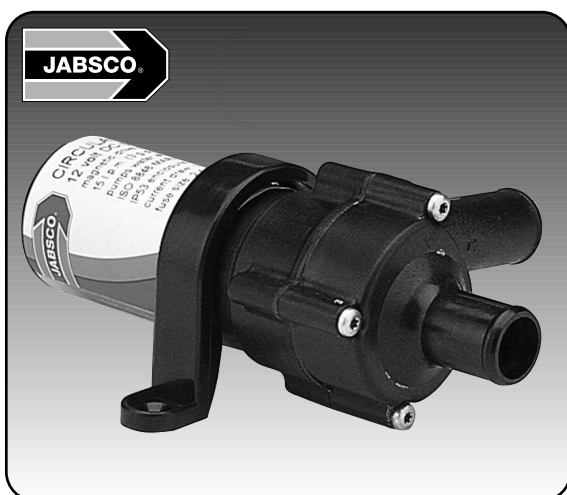
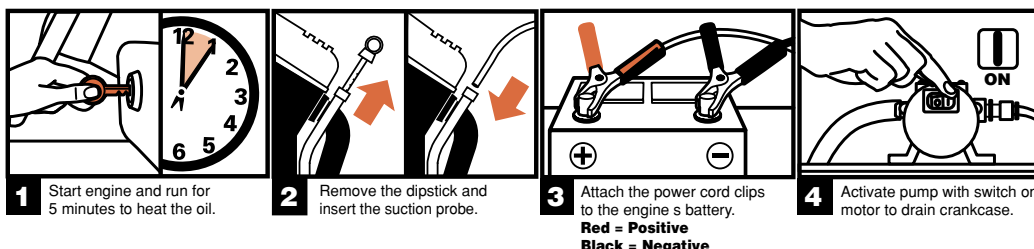
Engine Oil Change System

- Gives you quick, easy and clean oil changes at the flip of a switch
- Removes oil and sludge through the dipstick tube making engine oil changes quick and easy without getting under the engine
- Supplied with 8' of 1/4" (6.5mm) oil and heat resistant suction tube
- Retractable pouring spout is provided for emptying the bucket
- Available in 12 Volt dc with 8' (2.4m) cord with alligator clips

Size: 12-3/4" H x 12-3/8" DIA (32 x 33cm)
Probe - 1/4" (6.5mm)
OD x 8' (240cm) L
Weight: 3.5 lb (1.6 kg)

Model	Volts dc	Amps	Maximum Capacity
1785-000	12	4	14 Qt.

Four simple steps to fast, clean oil changes

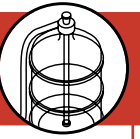


Jabsco Compact Magnetic Drive Centrifugal Sealless Heater Pump

- Delivers 3.9 gpm (15 lpm) at 4 ft (1.2m) of head, and is designed primarily as a hot water circulation pump for RV and bus heating systems
- When plumbed to engine cooling system it will pump heated coolant water to remote radiator to warm living spaces while underway
- Direct replacement for Johnson CO10P5-2 and CM10P7-1 circulation pump applications
- All plastic pump head is compatible with engine anti-freeze and capable of handling fluid temperatures up to 212° F (100° C)
- 3/4" (19mm) barbed ports
- Includes mounting bracket
- Ignition protected motor rated for continuous duty up to maximum brush life of 2,500 hours

Size: 5-3/4" L x 3-3/8" W x 2-1/2" H (14.5 x 8.5 x 6.4cm)
Shp. Wt: 1.5 lb (0.6 kg)
Std Carton: 1

Model	Volts dc	Amps	Fuse/Breaker
59500-0012	12	1.2	2
59500-0024	24	0.7	1



Bottled Water Dispenser

Applications

- Designed for dispensing bottled water to refrigerators, ice machines and dispensing faucets, coffee machines, beverage dispensers, vending machines and carts
- For fresh bottled water when travelling or at home
- Available in 12 Volts dc and 115 Volts ac

Special Features

- Positive displacement, double diaphragm pump design
- Compact size for easy mounting
- Float switch for automatic shut-off, when bottle is empty
- Built-in check valve to prevent back flow
- Universal seal cap and adjustable dip tube will accommodate most bottle sizes 2.5 to 5 gallons (9.4 to 30 liters)
- 1/4" (6.35mm) ID x 20' (6.1m) discharge hose included
- Optional water faucet kit
- UL and CUL listed

Size: 3.0" H x 5.5" W x 7.5" D
(76 x 140 x 190mm)

Weight: 5.6 net lbs. (2.5 kg)

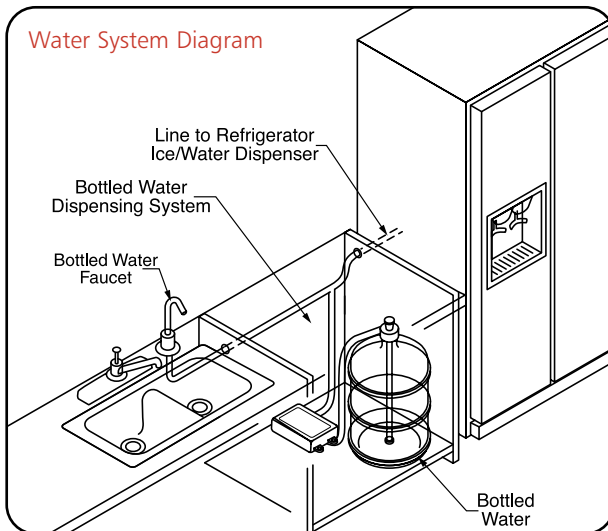
Shp. Wt: 8.5 net lbs. (3.9 kg)



Model	Volts	Flow gpm (lpm)	Pressure psi (bar)	Amps	Cord
BW3000A	12dc	1.0 (3.8)†	40 (2.8)	3.0	12" (30cm) lead wires
BW1000A	115ac	1.0 (3.8)†	40 (2.8)	0.5	6' (1.8m) cord & plug
Faucet Option					
21000-014A	Water Faucet Kit				

† Discharge Hose: 1/4" (6.35mm) x 20' (6.1m)

Water System Diagram



Bottled Water Dispensing System with Optional Water Faucet.

Bottled Water Dispenser



Danforth™ Compasses



Model C-100 (Black)

Model C-101 (White)



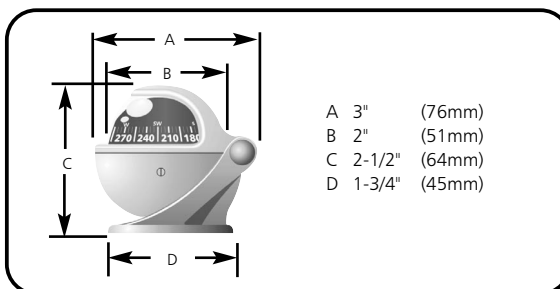
Model C-102 (Gray)

Model C-103 (Yellow)

Model	Description	Apparent Card Size (inches/mm)	Card Degrees	Finish
C100	Front Read, Black Card	2" (51mm)	5°	Black
C101	Front Read, Blue Card	2" (51mm)	5°	White
C102	Front Read, Blue Card	2" (51mm)	5°	Gray
C103	Front Read, Black Card	2" (51mm)	5°	Yellow

Danforth™ Quest™ Compasses

- Whether your fun takes you on the water, over the highway, or off-road, the new Danforth® Quest™ compass will point the way
- Unique bracket design provides versatility to mount compass at any angle on horizontal, vertical and overhead surfaces
- Mounts with adhesive mounting disk, with use of screws optional
- Exclusive NO-SPIN card technology provides guaranteed accuracy and rock-steady readings
- Compact sporty size (about the size of a tennis ball)
- Hi-flux corrector magnets provide the added measure of adjustment required for automobile, RV, ATV, snowmobile, and certain marine installations
- 12 Volts dc red night illumination is standard



The Danforth Quest Compasses are packaged in a colorful retail display box, with features and specifications clearly visible to the customer.



Marine Sealant Characteristic and Selection Guide

Elastomeric Characteristics	Elastomeric Sealants	Silicone Sealants	Polyurethane Sealants	Polysulfide Sealants
Fast Skinning	X	X		
Fast Curing	X	X		
Above or Below Waterline Use	X		X	X
Useable on All Plastics	X	X		
Paintable	X		X	X
Sandable	X		X	X
3 Year Shelf Life	X	X		
Excellent Adhesion to Metal, Wood, Fiberglass, Plastic	X		X	
Easily Removed	X	X		X
Available in Clear, White and Black	X	X		

Elastomeric Marine Grade Weather Resistant Sealant

- A one part, fast skinning (10 minutes) and fast curing (24 hours) multi-purpose marine grade sealant with superior strength, adhesion, elongation and life characteristics
- Cures in temperatures of -20° F to 120° F (-29° C to 49° C) and can be sanded and painted after curing
- Flexibility and compression capabilities are excellent
- Heavy duty use above or below the waterline
- Twists, bends, expands, and compresses
- Seals vents, beds hardware, and stops leaks
- Resistant to cleaners, oil, diesel fuel and salt water
- Adheres tenaciously without primers to fiberglass, glass, all plastic including Lexan®, ABS® and Starboard®
- Simple clean up with mineral spirits
- Not recommended for wood seams or use in areas subject to gasoline
- Available in white and clear 3 oz. (89 ml) tubes



Model	Color	Size	Container
320	White	3 fl. oz. (89 ml)	Tube
321	Clear	3 fl. oz. (89 ml)	Tube

Liquid Elastomeric Penetrating Sealant

- Liquid version of Elastomeric Clear Sealant
- Low viscosity sealant specially formulated for narrow joints where ordinary sealant cannot reach
- Ideal for sealing windshields, hardware, hatches, vents, and fine cabin seams
- Same skinning, curing, adhesive, and performance characteristics as Elastomeric Sealant
- Available in clear 3 oz. (89 ml) tubes



Model	Colour	Size	Container
350	Clear	3 fl. oz. (89 ml)	Tube

Sudbury® Sealants



Sudbury® Waxes and Restorer

Most popular marine products now available in the RV marketplace.



One Step Fiberglass Restorer and Wax

- One-Step Fiberglass Restorer & Wax is a heavy duty cleaner and wax that works better than many rubbing compounds without the grueling effort or damaging effects of highly abrasive rubbing compounds
- Cleans deeply and restores color and depth to dry or oxidized fiberglass or painted surfaces

Model	Size	Type
413	16 fl. oz. (473 ml)	Liquid

Sudbury® Boat/RV Care Products



Aqua Fresh!™

- For fresh tasting, odor free drinking water from fiberglass, plastic or metal tanks. Simply deposit the contents of these handy packets into water tank
- 100% biodegradable earth-friendly formula
- Absolutely safe and non toxic

Model	Size	Quantity per box
830	2 oz. (0.06 kg)	8 packets



Boat Soap™

- All-purpose, non-caustic cleaner that works well in hot or cold water
- Double-action emulsification removes scum, smudges, oil, and grease
- Great for washing greasy pots, pans, stoves, sinks and dishes
- Leaves surface film free and sparkling clean
- 100% biodegradable earth-friendly formula

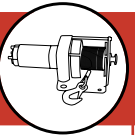
Model	Size
805-Q	32 fl. oz (946 ml)



Vinyl Restorer & Protector

- Vinyl Restorer and Protector renews the appearance of vinyls and provides depth to the original color
- Rich ingredients keep vinyls pliable, fresh looking and protected against the deteriorating effects of weather
- Makes old vinyl look new
- Simply spray and wipe off to provide a beautiful luster

Model	Size
2141	16 fl. oz (473 ml)



Electric Winch Model Series

- The Rule Electric Winch product line comprises a broad range of high quality and reliable winches
- Unique features include 3-stage planetary gears for greater pulling speed, power-in, power-out for consistent load control; corrosion resistant die cast drums and lifetime lubrication.
- Each winch is shipped with the cable assembly including hook and controls
- All electric hardware necessary for battery hook-up and mounting hardware included
- 'R' in model number denotes Remote Control feature

Model	Volts (dc)	Remote Control	Free Wheel	Cable	Weight (lb/kg)
1400 Series - 1400 lbs (635 kg) capacity					
V14	12		●	5/32" x 50' (4mm x 15.2m)	20 (9.1)
1600 Series - 1600 lbs (726 kg) capacity					
V16	24		●	5/32" x 50' (4mm x 15.2m)	20 (9.1)
2000 Series - 2000 lbs (907 kg) capacity					
V20	12		●	3/16" x 50' (4.8mm x 15.2m)	22 (10.0)
V20R	12	●	●	3/16" x 50' (4.8mm x 15.2m)	25 (11.3)
V20R-24V	24	●	●	7/32" x 50' (5.6mm x 15.2m)	28 (12.7)
3300 Series - 3300 lbs (1497 kg) capacity					
V33	12		●	7/32" x 50' (5.6mm x 15.2m)	29 (13.2)
V33R	12	●	●	7/32" x 50' (5.6mm x 15.2m)	34 (15.4)
4200 Series - 4200 lbs (1905 kg) capacity					
V42	12		●	7/32" x 50' (5.6mm x 15.2m)	30 (13.6)
V42R	12	●	●	7/32" x 50' (5.6mm x 15.2m)	35 (16.0)
Replacement Cable					
W104	-	-	-	5/32" x 50' (4mm x 15.2m)	8 (3.6)
W107	-	-	-	3/16" x 50' (4.8mm x 15.2m)	8 (3.6)
W114	-	-	-	3/32" x 50' (2.4mm x 15.2m)	9 (4.1)



Typical Model
1400, 1600, 2000, V20, V33



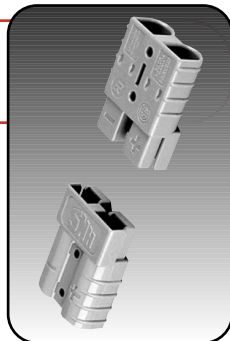
Typical Model
V3300, V4200, V5000,
V6000, V8400, V42

Winch Accessories

Cable Disconnect Kits

- Heavy duty plastic with silver coated connectors allows user to connect or disconnect both battery cables
- For Rule 1400, 1600, 2000, 3300, and 4200 series

Model	Gauge cable
W118PK	6, 8, 10, 12



Winch Covers

- Attractive cover protects winches from the weather



Model	Drum Winches
W139	For standard

Pulley Block

- W-131C Pulley Block
- Multiplies pulling power by 85%



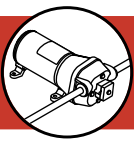
Roller Fairlead Kits

- Reduces cable wear when winching at severe angles



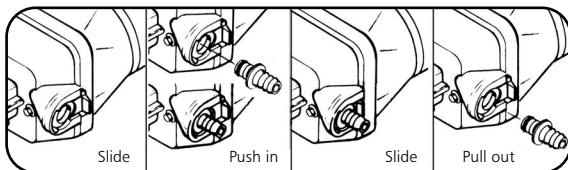
Model	Drum Winches
W197	For standard

Electric Winches and Accessories



Quad Port Fittings

'Quick-Connect' Port System



Snap-in seal tight ports

Quick-Connect Quad port system makes hose removal easy and allows for fast winterizing and system draining. All Quad ports fit directly into pump and are compatible with new Quad II pumps.

■ Two ports are included in each Quick-Connect package.

Installation:

1. Move slide back.
2. Push port all the way in.
3. Move slide forward to lock.

Removal:

1. Move slide back.
2. Pull port out of pump body.

	Part Number	Port	Size	Type	O-Ring Metal	Use
	20381-000	Quad	1/2" - 14 Pipe	Straight	EPDM	Potable
	20381-034	Quad	1/2" - 14 Pipe	Straight	Viton	Chemicals
	20381-026	Quad	10/13 mm Hose Barb	Straight	EPDM	Potable
	20381-002	Quad	1/2" (13mm) Hose Barb	Straight	EPDM	Potable
	20381-015	Quad	1/2" (13mm) Hose Barb	Straight	Viton	Chemicals
	20381-016	Quad	1/2" (13mm) Hose Barb	Straight	Buna	Oil Resistant
	20381-003	Quad	5/8" (16mm) Hose Barb	Straight	EPDM	Potable
	20381-020	Quad	5/8" (16mm) Hose Barb	Straight	Buna	Oil Resistant
	20381-033	Quad	5/8" (16mm) Hose Barb	Straight	Viton	Chemicals
	20381-006	Quad	3/4" (19mm) Hose Barb	Straight	EPDM	Potable
	20381-012	Quad	3/4" (19mm) Hose Barb	Straight	Buna	Oil Resistant
	20381-014	Quad	3/4" (19mm) Hose Barb	Straight	Viton	Chemicals
	20381-007	Quad	Garden Hose Adapter		EPDM	Potable
	20381-013	Quad	Garden Hose Adapter		Buna	Oil Resistant
	20381-032	Quad	Garden Hose Adapter		Viton	Chemicals
	20381-008	Quad	1/2" - 14 Pipe	90° Elbow	EPDM	Potable
	20381-036	Quad	1/2" - 14 Pipe	90° Elbow	Viton	Chemicals
	20381-024	Quad	10/13 mm Hose Barb	90° Elbow	EPDM	Potable
	20381-009	Quad	1/2" (13mm) Hose Barb	90° Elbow	EPDM	Potable
	20381-017	Quad	1/2" (13mm) Hose Barb	90° Elbow	Viton	Chemicals
	20381-019	Quad	1/2" (13mm) Hose Barb	90° Elbow	Buna	Oil Resistant
	20381-010	Quad	3/4" (19mm) Hose Barb	90° Elbow	EPDM	Potable
	20381-018	Quad	3/4" (19mm) Hose Barb	90° Elbow	Viton	Chemicals
	20381-031	Quad	3/4" (19mm) Hose Barb	90° Elbow	Buna	Oil Resistant

Note: 10/13mm ports are stepped to be used with 10mm or 13mm hose and may also be used with 3/8" I.D. hose. 5/8" hose barb, 90° elbow is not available. 1/2" - 14 pipe is similar to 1/2" BST.



Call 1-800 297-3904 For 24 Hour Technical Data Assistance Via Fax!

The FLOJET Fax-on-Demand System will prompt you to receive the Document Index by entering 2, then 2001, # and entering your Fax No.

Product	Page	Product	Page	Product	Page	Product	Page
49 PWC	9	4325-143	5	20409-043	3, 6	45960-0000	12
320	17	4325-343	5	20419-001	3	45960-0001	12
321	17	4406-043	3	20419-002	4, 5, 6	59500-0012	14
350	17	4406-143	3	20420-040	9	59500-0024	14
413	18	4406-343	3	20796-000A	6	60020-0000	11
805-Q	18	12573-0000	8	20799-000A	6	60020-0024	11
830	18	18560-1000	13	21000-014A	15	60080-0012	10
1740-000	9	18590-1000	13	21046-057	2	60080-0024	10
1740-002	9	18590-1001	13	21046-121	2	61050-0012	10
1740-003	9	18590-1010	13	21046-187	2	61050-1224	10
1740-004	9	18753-0178	11	30004-0000	7	62022-4002	11
1740-010	9	18753-0351	12	30015-0000	7	62026-4002	11
1740-012	9	18753-0352	12	30022-0000	7	67296-0000	11
1740-014	9	18753-0455	10	30033-0000	7	BW1000A	15
1740-375	9	18753-0528	10	30123-0000	7	BW3000A	15
1750-045	9	18810-0000	8	30126-0000	7	C100	16
1750-145	9	20381-000	20	30200-0000	7	C101	16
1750-245	9	20381-002	20	30201-0000	7	C102	16
1785-000	14	20381-003	20	30573-0001	8	C103	16
2009-004C	2	20381-006	20	34344-0000	9	LF122-002	2
2009-008A	2	20381-007	20	35471-0000	9	LF122-202	2
2009-043A	2	20381-008	20	35620-1100	7	R2580-100A	1
2009-076A	3	20381-009	20	36950-2000	7	R2580-300A	1
2009-080A	5	20381-010	20	36950-2010	7	R2840-300	6
2009-087A	4	2038 -012	20	37075-0092	13	R4515-743	1
2019-001A	2	20381-013	20	37075-0094	13	R4525-743	1
2019-024A	3	20381-014	20	37075-1092	13	V14	19
2019-027A	5	20381-015	20	37075-1094	13	V16	19
2029-091A	5	20381-016	20	37075-3092	13	V20	19
2029-087A	3	20381-017	20	37075-3094	13	V20R	19
2090-104	3	20381-018	20	37121-0000	7	V20R-24	19
2090-118	4, 5, 6	20381-019	20	37121-0010	7	V33	19
2095-103	2	20381-020	20	37176-0000	7	V33R	19
2095-105	2	20381-022	6	37178-0000	7	V42	19
2095-108	2	20381-024	20	42510-0000	2	V42R	19
2100-12	2	20381-026	20	42520-0000	2	W104	19
2100-740	2	20381-031	20	42530-0000	2	W107	19
2100-750	2	20381-032	20	43670-0003	10	W114	19
2100-916	2	20381-033	20	43670-0004	10	W118PK	19
2100-919	2	20381-034	20	43670-0005	11	W131C	19
2141	18	20381-036	20	43990-0013	11	W139	19
2840-000	6	20403-040	3, 5	43990-0014	11	W197	19
2840-100	6	20404-000	3, 4	43990-0015	11		
2840-110	6	20404-003	4, 5, 6	43990-0016	11		
2840-120	6	20404-009	3	43990-0061	7		
4305-144	3, 4	20406-001A	3	43990-0064	7		
4305-144A	4	20406-002A	4, 5, 6	44114-1100	7		
4306-500	3	20406-008A	3	44127-1000	7		
4306-501	3	20407-030	3, 4, 5, 6	45900-1000	12		
4325-043	5	20408-000	3, 4, 5, 6	45903-0002	12		

Product Number Index