

COMING ON
STRONG

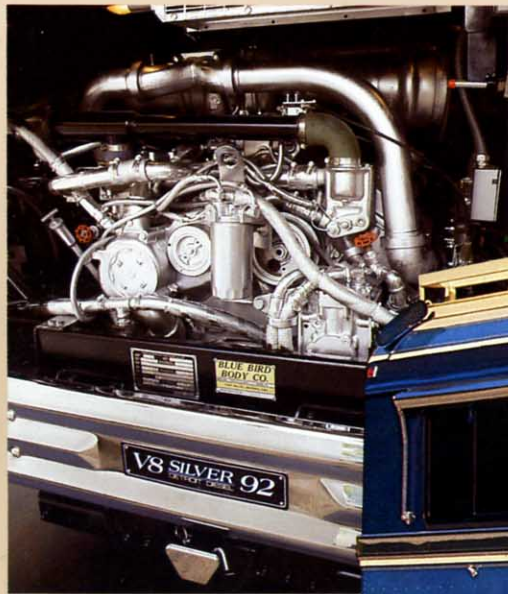
Blue Bird Wanderlodge has it all... Coming & Going



Power.

The new rear engine is Detroit Diesel 8V92TA. A proven, dependable workhorse. The real power of Wanderlodge is not found in just the engine. Wanderlodge has even greater power, that of continuous production going into its third decade. Also there's people

power — no changes in ownership. Blue Bird Wanderlodge is family owned and they care about you and your family. After all that's what Family of Friends is all about.



New PT engine



Wanderlodge

Strength.

The Blue Bird Wanderlodge rear engine model starts on a solid foundation with a heavy-duty chassis which is specifically engineered for motorhomes. It is neither a bus chassis nor a modification of a bus chassis. It is all steel with no compromises on safety.

Another of Wanderlodge strengths is its national distributor organization. When you need after-the-sale assistance Blue Bird Wanderlodge people are there.

Kohler generator – sound attenuated for quiet operation, shown on PT

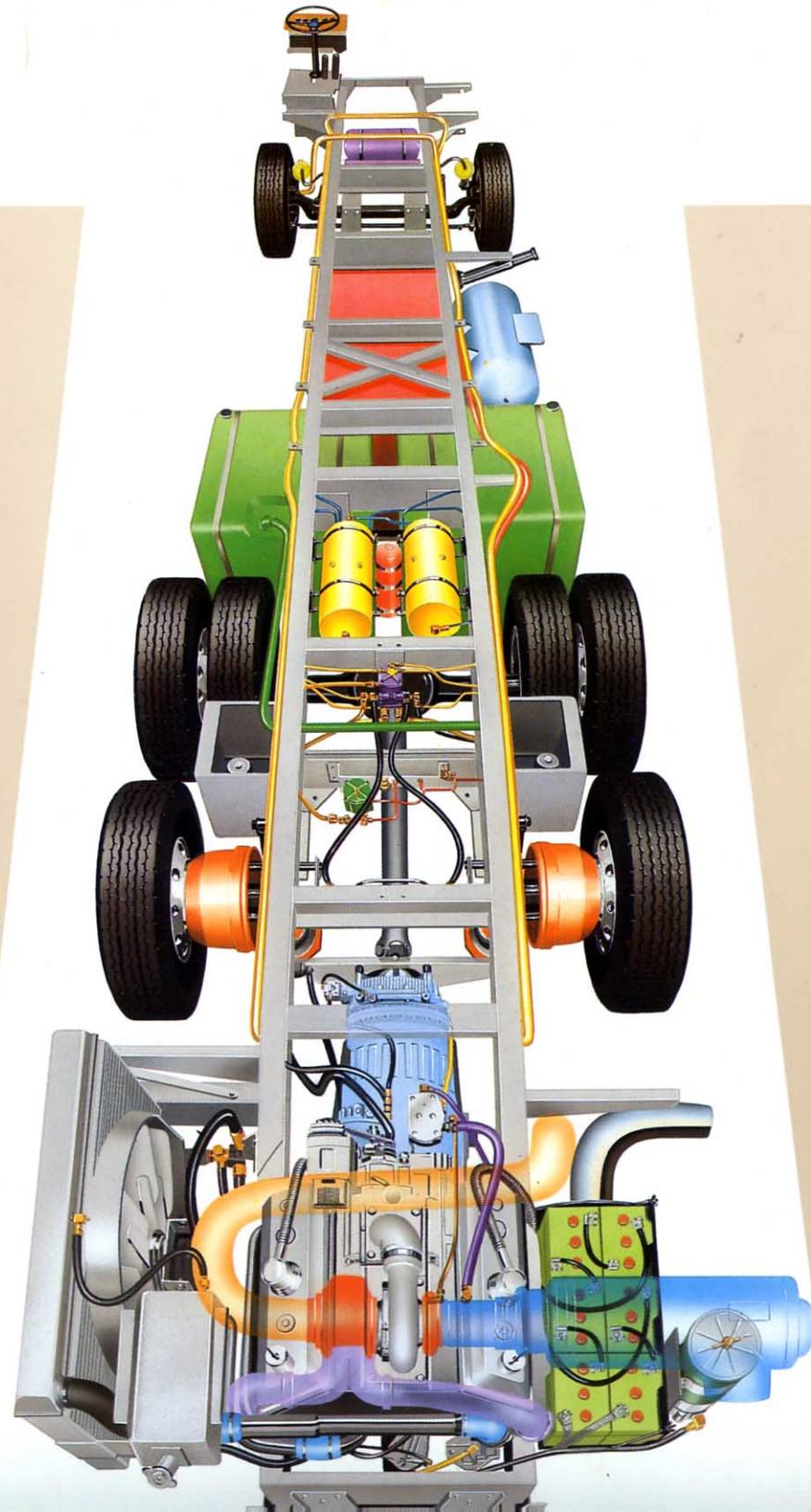


Featuring
KOHLER
GENERATORS
for power anywhere

Push button
transmission controls* –
easy operation



*Optional on PT-36 and not available on Forward Control



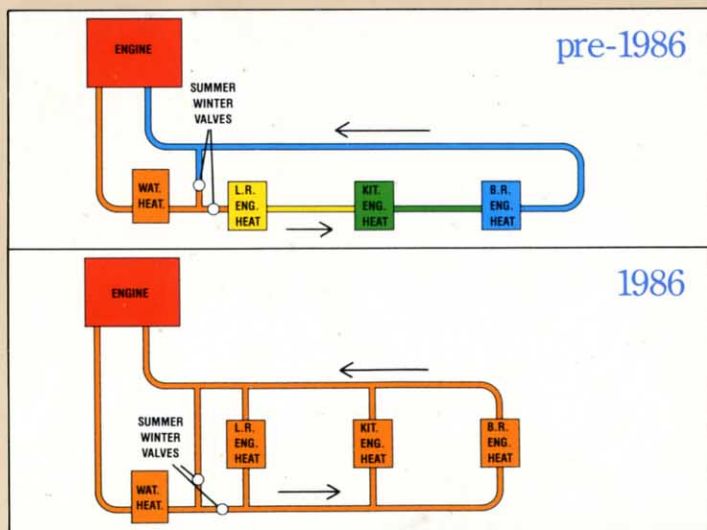
Rear Engine Chassis Features

- 300 Gallon Fuel Capacity
- 660 Amp Hour Battery Capacity
- Full Air Ride Suspension
- Oil Lubricated Wheel Bearings

Control.

You're in control – on the road or docked. The new over-head dash features greater visibility and convenience. Blue Bird Wanderlodge engineers have thoughtfully designed these coaches with you in mind.

The diagram below illustrates the new parallel heating system which distributes heat more evenly throughout the coach. You now have more precise control over temperatures fore and aft.



PT overhead dash



An important aspect of choosing a motorhome is the availability of parts. Blue Bird Wanderlodge has a complete inventory of parts for every unit produced – 1963 to current models. If you like, you can visit the Fort Valley, Georgia plant and the highly skilled service technicians will do the installation work.

PT headlights



Engineering.

Wanderlodge

Innovation.

Everyone likes a little bit of blue sky. You can have yours in either the bedroom or forward seating area. The new Wanderlodge features an optional pop-top sky light. That's not the only new idea. The gas grill* now slides out. Ask your Wanderlodge representative about other new features.



*Available on PT only.



Owners report driving a Wanderlodge is a dream. Living in a Wanderlodge is a dream come true. Luxurious fabrics — to push-button operated drapes and more. The new optional surface material on the galley counter-tops and dining table is Dupont Corian™ which is virtually mar-proof. The interiors reflect the quality of craftsmanship found in fine world-class yachts. All locks and fasteners are nautically fashioned so when you're cruising, you're shipshape.

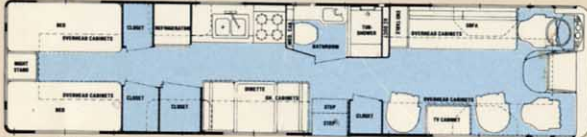
FC-31 SB



FC-33 SB



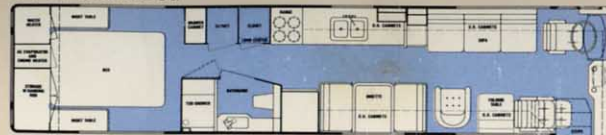
FC-35 SB



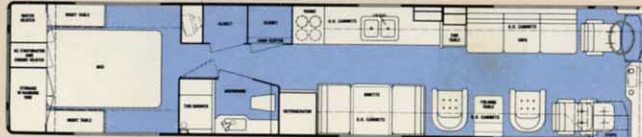
FC-35 RB



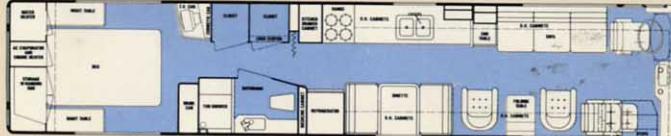
PT-36 Island Bed



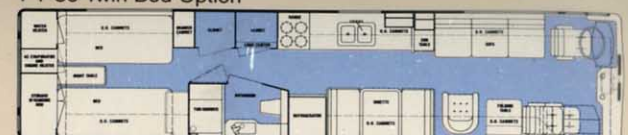
PT-38 Island Bed



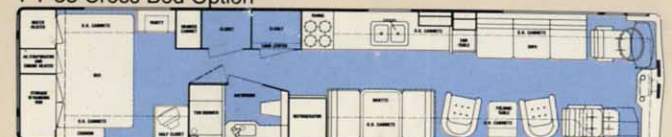
PT-40 Island Bed



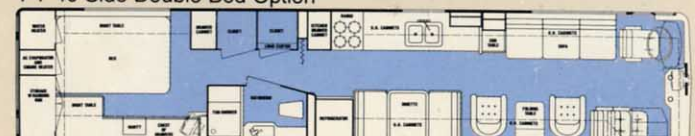
PT-36 Twin Bed Option



PT-38 Cross Bed Option



PT-40 Side Double Bed Option



Blue Bird Wanderlodge offers a variety of proven, livable floor plans. Over twenty years experience has shown what arrangements work and which won't. Blue Bird has taken the guesswork out of planning your interior.

All optional bedroom arrangements are available in all PT models.

Selection.

Forward Control Specifications

All Steel Construction

14 gauge steel floor, gusset, roof bows, headers, stringers. 20 gauge roof, 16 gauge side panels, rub rails and exterior sheet metal. One piece steel post and bows. Interior—vinyl and Formica.

Aluminum roof rack with aluminum deck for storage • Air Conditioner—31' & 33'. 2-13,500 BTU roof mounted. 35' 3-14,000 BTU central air conditioners (Side Bath Only) • Automotive air conditioner—18,000 BTU • Heat—3-16,000 BTU LPG furnaces 3-50,000 BTU* automotive heaters, one in each living area with separate common thermostats for LPG and automotive heat, plus 1—15,000 BTU* automotive heater in bathroom and 1—90,000 BTU* automotive heater in driver and co-pilot's area. One electric heater with thermostat in bathroom. Floor 6 layers, bottom to top—urethane foam, automotive undercoating. 14 gauge steel, 5/8"

thick plywood, carpet pad and carpet • Deep tint windows on sides • All side windows equipped with screens • Windows in living room and bedroom are emergency exits • Air powered driver and co-pilot's fresh air vents • Dual side turn signals for safety • 8"x8" heated rearview mirrors with 5 1/2"x6" convex • Interior rearview mirror • Two-speed windshield wipers—parallelogram type • Leather driver's and co-pilot's seats with reclining backs and 6-way electric controls, plus air locking side slides • Front of coach opens for service of electric components and front heater.

Chassis Specifications

GVWR-34,000 lbs. • Axles—13,200 lbs. front, 23,000 lbs. rear • Full air brakes—front 16 1/2" x 5" wide and 3/4" thick, rear 16 1/2" x 7" wide x 3/4" thick • Parking brakes—Spring brake system • Electric driveline re-

tarder • Air ride suspension system—front and rear • Fuel capacity 31' or 33'-235 gal., 35'-265 gal. Rear bath 225 gal. rear fill • 30 gallon gasoline with gas generator, side fill • Air cruise control • Full instruments • Holding tanks—56 gallon gray water, 40 gallon waste (31' & 33')—50 gallon waste (35') • Batteries—6-6 volt series parallel connected to supply 660 Amp Hours at 12 volts. • Generator 7.5 KW gas powered 31' or 33', diesel powered 12KW 35' • LPG tank—Frame mounted 44.5 gallon (180 lb.) capacity • Tilt steering column • Frame 9 5/8" x 3" flange 1/4" steel • 12 volt Master Switch • Circuit breakers on most 12 volt circuits (only limited fuses). Tires—11R 22.5 x PR 16 XZA steel belted radials mounted on 8.25 cast aluminum wheels • Oil lubricated wheel bearings on front axle • Differential oil lubricated rear axle.

*SBBMA Rating

PT 36/38/40 Specifications

All Steel Construction

14 gauge steel floor, gusset, roof bows, headers, stringers. 20 gauge roof, 16 gauge side panels, rub rails and exterior sheet metal. One piece steel posts and bows. Interior—vinyl and Formica.

Aluminum roof rack with aluminum deck for storage • 3-14,000 BTU central air conditioners • Automotive air conditioner—18,000 BTU • Heat—3-16,000 BTU LPG furnaces and 3-50,000 BTU* automotive heaters, one in each living area with separate common thermostats for LPG and automotive heat, plus 1-15,000 BTU* automotive heater in bathroom and 1-90,000 BTU* automotive heater in driver and co-pilot's area. 4 electric heaters with thermostats—one in each living area and one in bathroom. Floor 6 layers, bottom to top—urethane foam, automotive undercoating. 14 gauge steel, 5/8" thick plywood, carpet pad and carpet • Deep tint windows on sides • All side windows equipped with screens • Windows in living room and bedroom are emergency exits. • Air powered driver and co-pilot's fresh air vents • Dual side turn signals for safety • 8" x 8" heated rearview mirrors with 5 1/2" x 6" convex • Interior rearview mirror • Two-speed

electric windshield wipers—parallelogram type • Leather driver's and co-pilot's seats with reclining backs and 6-way electric controls, plus air locking side slide on driver's seat. Front of coach opens for service of electric components and front heater.

Common Chassis Specifications

• Full Air Brakes—Front: 16 1/2" x 5" x 3/4" Thick. Rear & Tag: 16 1/2" x 7" x 3/4" Thick • Parking Brakes—Spring Brake System • Suspension System—Full Air Ride On All Three Axles • Fuel Capacity—300 Gallons • Air Cruise Control • Full Instrumentation • All Copper Air and Fuel Lines • Batteries—6-6 Volt, Series/Parallel Connected to Supply 660 Amp. Hours at 12 Volts • Generator—12 KW Diesel Powered • LPG Tank—Frame Mounted 44.5 Gallon (180 lb.) Capacity • Tilt Steering Column • 12 Volt Master Switch • Circuit Protection—Circuit Breakers on Most 12 Volt Circuits (Only Limited Fuses) • Tires—11R 22.5 x PR16 XZA Steel Belted Radials Mounted on 8.25 Cast Aluminum Wheels • Oil Lubricated Wheel Bearings on Front and Tag Axles, Differential Oil Lubricated Rear (Drive) Axle

PT 36 Specifications

• Engine: Detroit Diesel 6V92TA
—330 HP @ 2100 RPM
—1007 Ft. Lbs. Torque @ 1200 RPM

• Transmission: Allison MTB 654
CR 5 Speed

GVWR: 42,000 Lbs.

Axles: Front—13,200 Lbs.
Rear—23,000 Lbs.
Tag—10,000 Lbs.

Holding Tanks: 72 Gallon Gray Water
82 Gallon Waste

Frame: 9 5/8" x 3" Flange x 1/4" Steel

*This engine and transmission combination is optionally available in PT 38 and PT 40 chassis.

**California engine is 325 HP @ 2100 RPM—958 Ft. Lbs. Torque @ 1200 RPM

PT 38/PT 40 Specifications

• Engine: Detroit Diesel 8V92TA
—475 HP @ 2100 RPM
—1330 Ft. Lbs. Torque @ 1300 RPM

Transmission: Allison MTB 741
4 Speed

GVWR: 44,000 Lbs.

Axles: Front—13,200 Lbs.
Rear—23,000 Lbs.
Tag—12,100 Lbs.

Holding Tanks: 100 Gallon Gray Water
100 Gallon Waste

Frame: 10 1/8" x 3 1/2" Flange x 1/4" Steel

+ California Engine is 450 HP @ 2100 RPM—1250 Ft. Lbs. Torque @ 1300 RPM.

All illustrations and specifications contained in this literature are based on the product information available at the time of publication approval. In some places, artist's renderings have been used. The right is reserved to make changes at any time in prices, colors, materials, equipment, specifications and models. Due to occasional printing irregularities, the colors shown may vary from actual hues. See your Wanderlodge Distributor for accurate color chips and new color combinations, fabrics, etc.—other than those depicted herein. Ask your distributor for examples. Many items are options—your Blue Bird Wanderlodge distributor will explain. Blue Bird Wanderlodge, One Wanderlodge Way, Fort Valley, GA 31030.



Blue Bird Wanderlodge
One Wanderlodge Way, Fort Valley, Ga. 31030
(912) 825-2021

Wanderlodge



PT galley



Forward Control dining area and galley



PT dash

The Wanderlodge galley is a marvel of features as well as beauty. It features a food center, hot water tap for those wonderful "instants", microwave/convection oven*, Dometic refrigerator and all the amenities you'd expect in a Wanderlodge.

*Optional

PT cockpit



We at Blue Bird Wanderlodge thank you for your time and interest. If you have questions or require further information, contact your Blue Bird representative. We're here to serve you.

Comfort.